



725-5529  
725-5531  
725-5544

**1** WIRING DIAGRAM FOR 3 PHASE SUPPLY WITH 400 V COIL

MFRS PART NOS:  
DOLSW5.5400  
DOLSW7.5400  
DOLSW11400

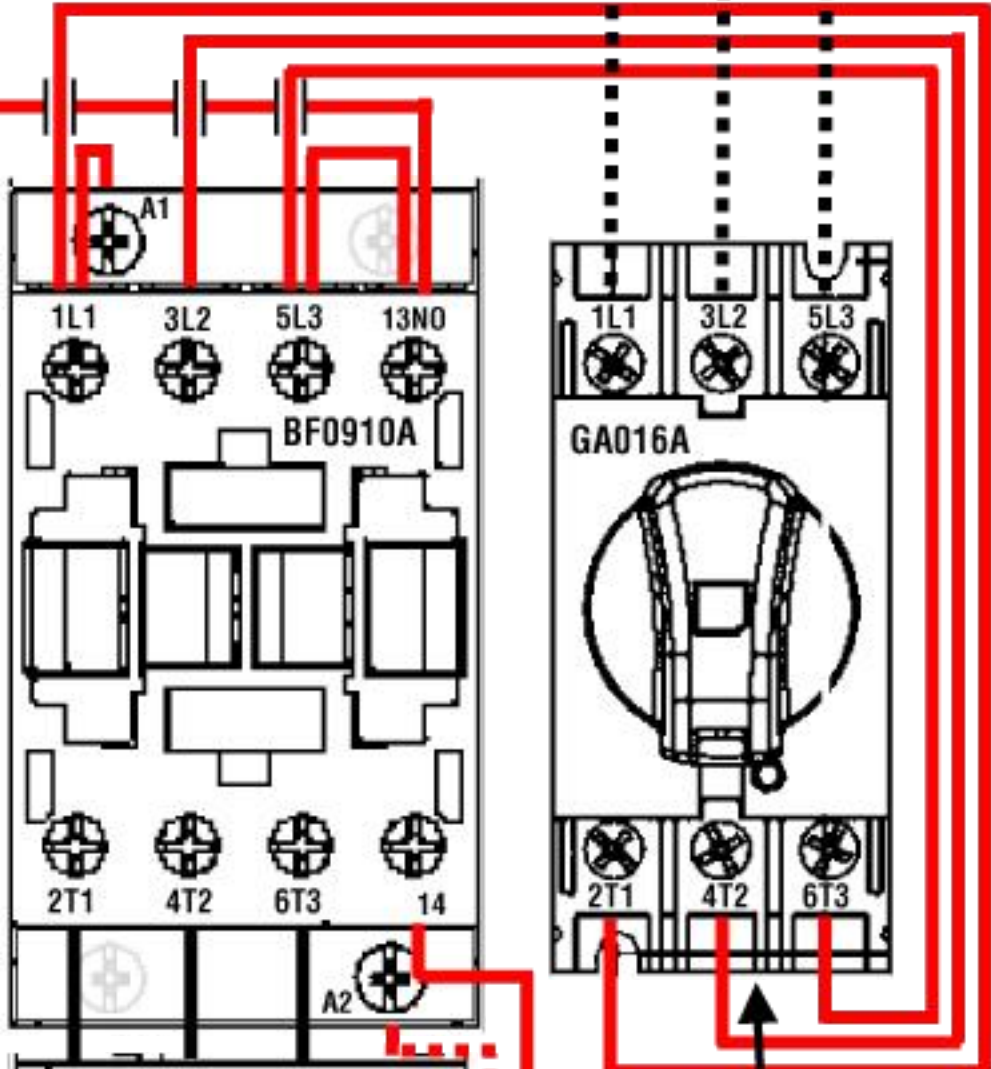
BF0910A400/  
BF1810A400/  
BF2510A400  
CONTACTOR

START CONTACT



**2** INCOMING TP SUPPLY

L1 L2 L3



GA016A/GA025A/GA032A  
ISOLATOR  
\*Power link cable sizing:  
5.5kW = 1.5mm<sup>2</sup>  
7.5kW = 2.5mm<sup>2</sup> & 11kW = 4mm<sup>2</sup>

RF38 THERMAL RELAY  
(TO BE ORDERED SEPARATELY)

**\*\*INSTALLER TO CONNECT COPPER 4TH PIN TO LOWER A2 ON CONTACTOR & FLYING LEADS TO 96 ONLY**

**DO NOT CONNECT ANY WIRES TO 95 BUT ENSURE 95 & A2 TERMINALS ARE TIGHTENED**

**5**  
**WARNING**  
TO PREVENT RISK OF DAMAGE OR SAFETY HAZARDS, THIS EQUIPMENT SHOULD ONLY BE INSTALLED BY SUITABLY QUALIFIED OR COMPETENT PERSONS AND IN ACCORDANCE WITH ALL APPLICABLE ELECTRICAL REGULATIONS

**3** KEY  
CONTROL WIRING ALREADY INCLUDED (Red solid line)  
**4** CONNECTIONS TO BE MADE BY INSTALLER (Dashed line)  
**\*\*RF38 INTERNAL 95-A2 CONNECTION** (Red dotted line)

OUTGOING SUPPLY TO 3PH MOTOR

U1 V1 W1

**6**

**7**