



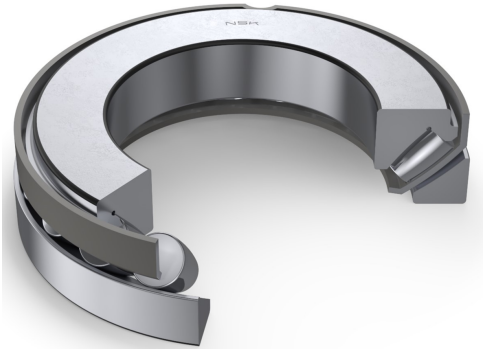
PRODUCT DATASHEET

Datasheet creation date: 2025/06/02 8:51 (UTC)



29318E

Thrust Spherical Roller Bearings



Boundary Dimensions

d	90	mm	Bore diameter
D	155	mm	Outside diameter
T,T3	39	mm	Height
r (min.)	1.5	mm	Chamfer dimension

Basic Load Ratings

Ca	350000	N	Basic dynamic load rating
C0a	1080000	N	Basic static load rating

Speeds

Oil (Oil-bath)	2200	min-1	Oil-bath lubrication
----------------	------	-------	----------------------

Dimensions

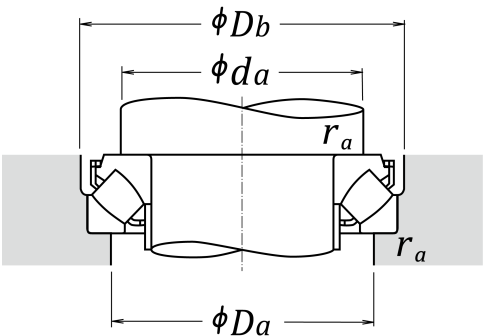
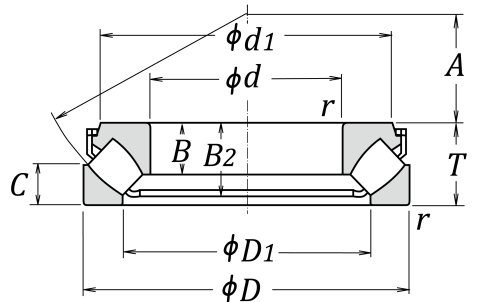
B2	35	mm	Height shaft washer + cage
d1	139.5	mm	Outside diameter of shaft washer end side face
B1	24.5	mm	Width shaft washer or length of shaft washer bore diameter that fits on shaft
C	19	mm	Height housing washer
A	52	mm	Distance from shaft washer end side face to pressure point
D1	118	mm	Shoulder diameter outer ring
ds1 (max.)	97	mm	Abutment diameter spacer ring
ds2 (max.)	97	mm	Abutment diameter spacer ring (E design)

Abutment and Fillet Dimensions

Da (max.)	140	mm	Diameter of housing abutment
Db (max.)	158	mm	Abutment diameter housing (E design)
ra (max.)	1.5	mm	Radius of shaft or housing fillet
da (min.)	120	mm	Abutment diameter spacer ring (E design)

Mass

Mass approx.	2.83	kg	Mass approx.
--------------	------	----	--------------





PRODUCT DATASHEET

Datasheet creation date: 2025/06/02 8:51 (UTC)

