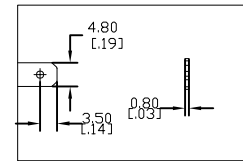
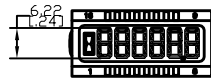
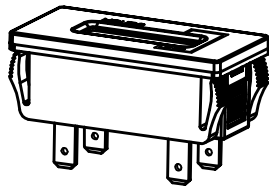
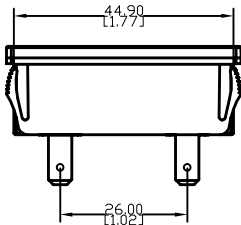
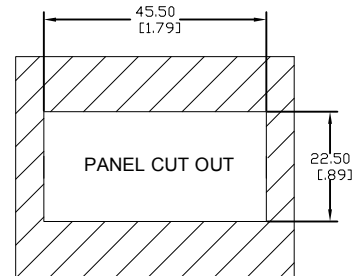
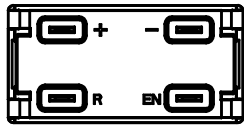
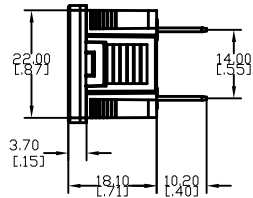
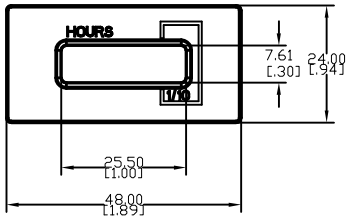


| REVISIONS |                 |          |      |
|-----------|-----------------|----------|------|
| REV.      | DESCRIPTION     | DATE     | INIT |
| 0         | INITIAL RELEASE | 09/28/20 |      |
| 1         |                 |          |      |



PIN SIZE

1. Display:  
LCD display, viewing angle is 6°Clock.  
6-digit display, digit height 6.22mm.  
Temperature range of LCD screen: -40°C-80°C.


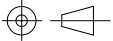
2. Timing function:  
V+ connected to positive pole of power source, V- connected to negative pole of power source; When EN connected to positive pole of power source, the hourglass starts flashing and it means hour meter starts recording running hours.  
Record the total running hours and the timing range is 0-999999H resettable.  
Timing accuracy : when the total hours range is 0.0-99999.9H, the timing accuracy is 0.1H; when the total hours range is 100000-999999H, the timing accuracy is 1H.

3. Resetting function:  
When R is connected to positive pole for 2 seconds, 00000.0 will show on LCD screen and the total hours is reset to 0.  
After R is disconnected, reconnect EN to positive pole, hour meter will restart recording running hours.

4. Power failure protection:  
When power source is disconnected, hour meter will automatically store the value of the current accumulated running hours.

5. Working voltage range:  
Low voltage: AC 6-85V; DC 6-60V  
High voltage: AC 85-250V; DC 60-150V

| Item                  | Parameter        |
|-----------------------|------------------|
| Working way           | AC/DC input      |
| Housing material      | ABS,black color  |
| Product dimension     | 48mm*24mm*28.3mm |
| Viewable area         | 25mm*7.6mm       |
| Operation temperature | -40°C-65°C       |
| Waterproof level      | IP67             |
| Weight                | 36g              |

|  |                         |   |   |                       |                    |               |
|--|-------------------------|---|---|-----------------------|--------------------|---------------|
| UNLESS OTHERWISE SPECIFIED DIMENSIONS ARE IN INCHES<br>TOLERANCES ARE:<br>.X±.1<br>.XX±.02<br>.XXX±.005<br>X°±1° | DRAWN                   | DATE  | <br>NINGBO JIANGBEI RUN LEADER ELECTRONICS CO., L1<br>WWW.RUN-LEADER.COM |                       |                    |               |
|  | CHECKED                 | DATE  |   |                       |                    |               |
|  | APPROVED                | DATE  |   |                       |                    |               |
|  | MATERIAL<br>N/A         | PROJECTED VIEWS ARE 3RD ANGLE   | TITLE<br>AC/DC HOUR METER   |                       |                    |               |
|  | FINISH<br>N/A           |  | SIZE<br>B   | PART NO.<br>RL-HM037A |                    |               |
| COMPUTER GENRATED<br>DRAWING-NO MANUAL<br>CHANGES ALLOWED  | DO NOT SCALE<br>DRAWING | STATUS<br>DS4_DESIGN  | SCALE<br>NTS  | SHEET<br>1 OF 1       | PROJECT NO.<br>011 | REVISION<br>0 |