

DETAILS

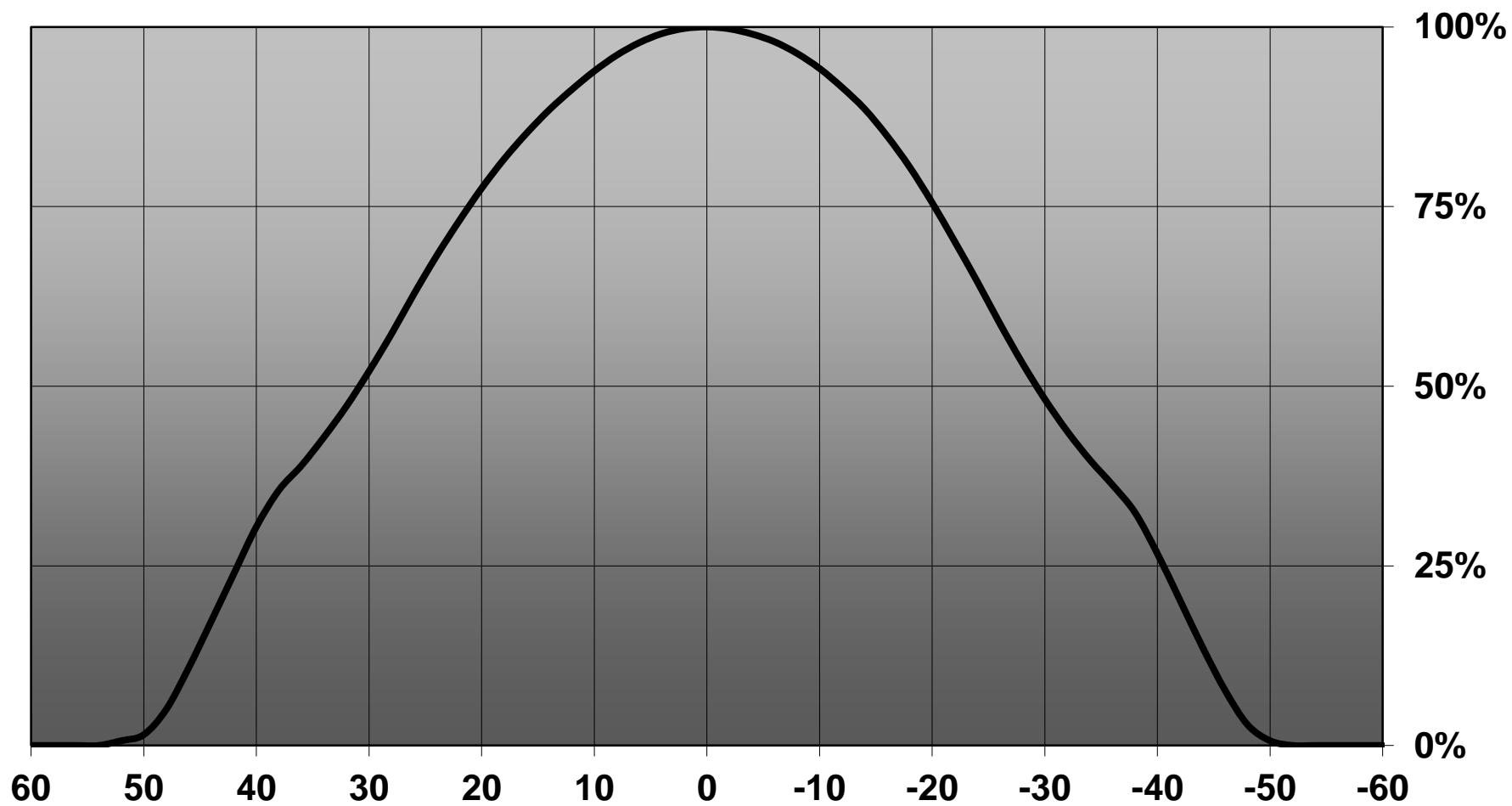
Product Number	CA12883_MINNIE-WWW
Family	Minnie
Type	RefAssy
Color	black
Diameter	35 mm
Height	15,8 mm
Style	round
Optic Material	PC
Holder Material	PC
Fastening	tape
Status	ready
ROHS Compliant	Yes
Date Updated	7/05/2015

OPTICAL PROPERTIES

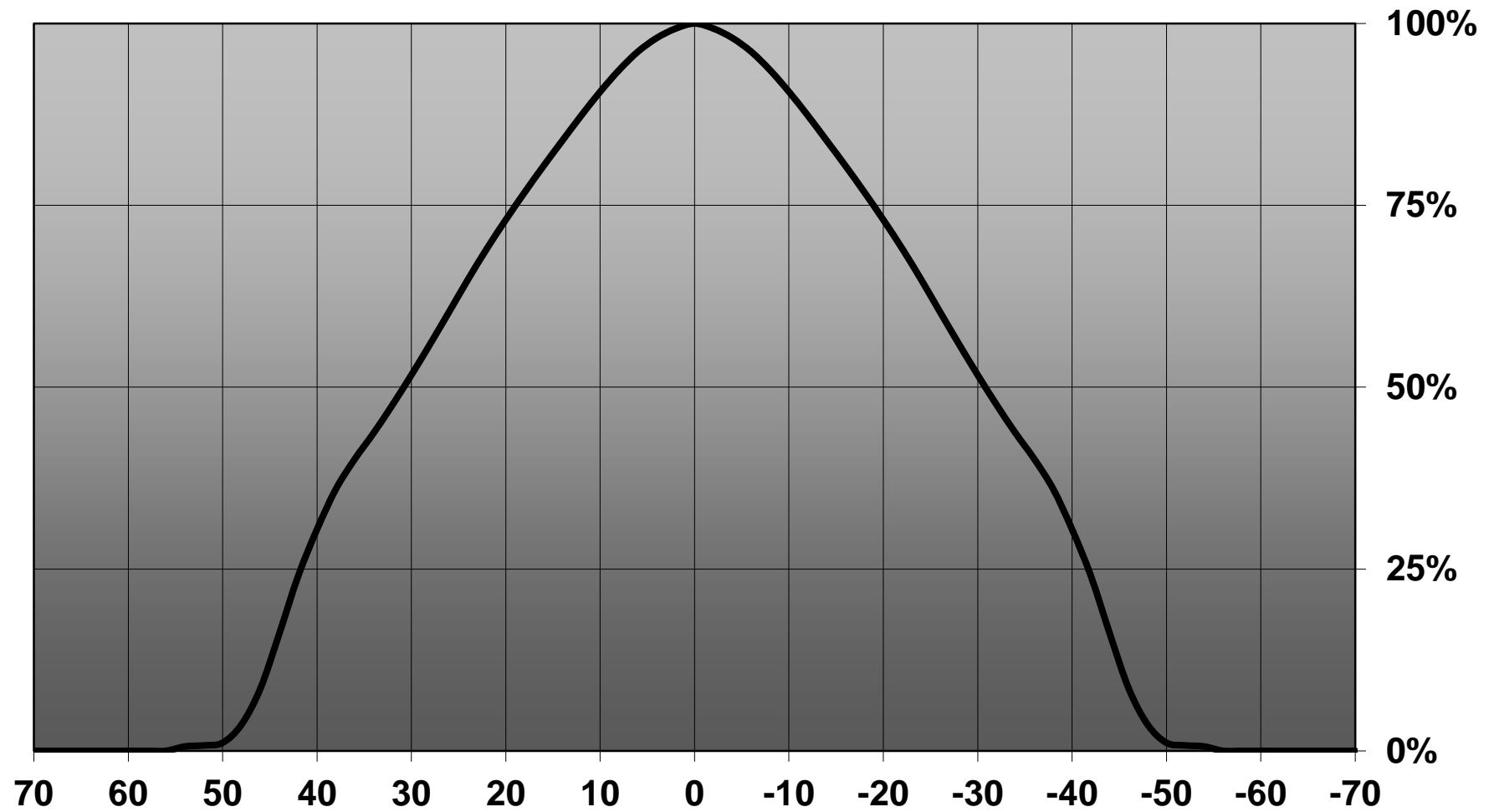
LED	Viewing	Light	Effi-	cd/lm	Connector
	Angle	Beam	ciency		
Duris S10	60 deg	WWW-class	90 %	1.000	-
LUXEON M	63 deg	WWW-class	92 %	0.869	-
XHP70	71 deg	WWW-class	90 %	0.730	-
MHD-E/G	73 deg	WWW-class	95 %	0.720	-



Relative intensity of CA12883_MINNIE-WWW_(Duris_S10)



Relative intensity of CA12883_MINNIE-WWW-LuxM



4

3

2

1

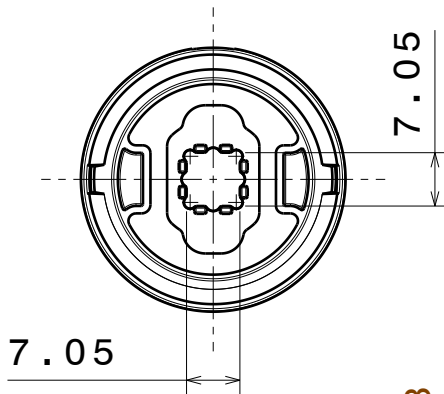
D

C

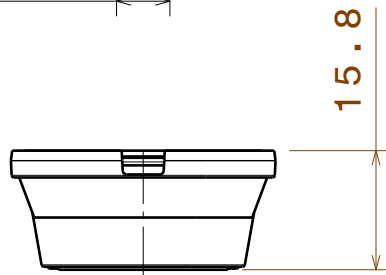
B

A

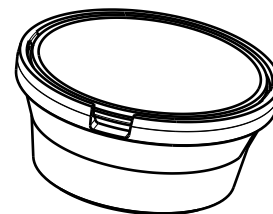
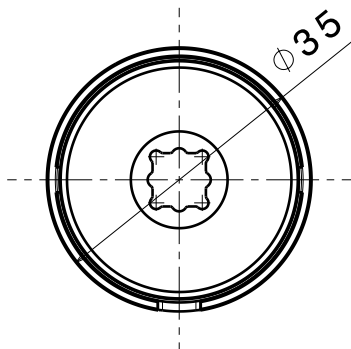
Bottom view



Front view



Top view



Isometric view

4

3

2

1

INDEX	PART NO	DESCRIPTION	MATERIAL	COLOUR
1	-	MINNIE_LUXEON-M_ASSEMBLY	Refl and holder PC, Tape PU foam	

Tolerances if not otherwise shown
According to DIN ISO 2768-1
Linear measures:
Up to 30mm class M, otherwise class C.
According to DIN ISO 2768-2
Form and position: class L

LEDiL

Ledil Oy
Salorankatu 10
FIN 24240 SALO
Finland

THIRD ANGLE PROJECTION:



DRAWING TITLE

MINNIE_LUXEON-M_ASSEMBLY

This drawing is the property
of LEDiL Oy. It may not be
reproduced, copied or
communicated without a written
agreement with LEDiL Oy."

SIZE

A4

PART NUMBER

-

SCALE

1:1

WEIGHT

-

SHEET

1 / 1

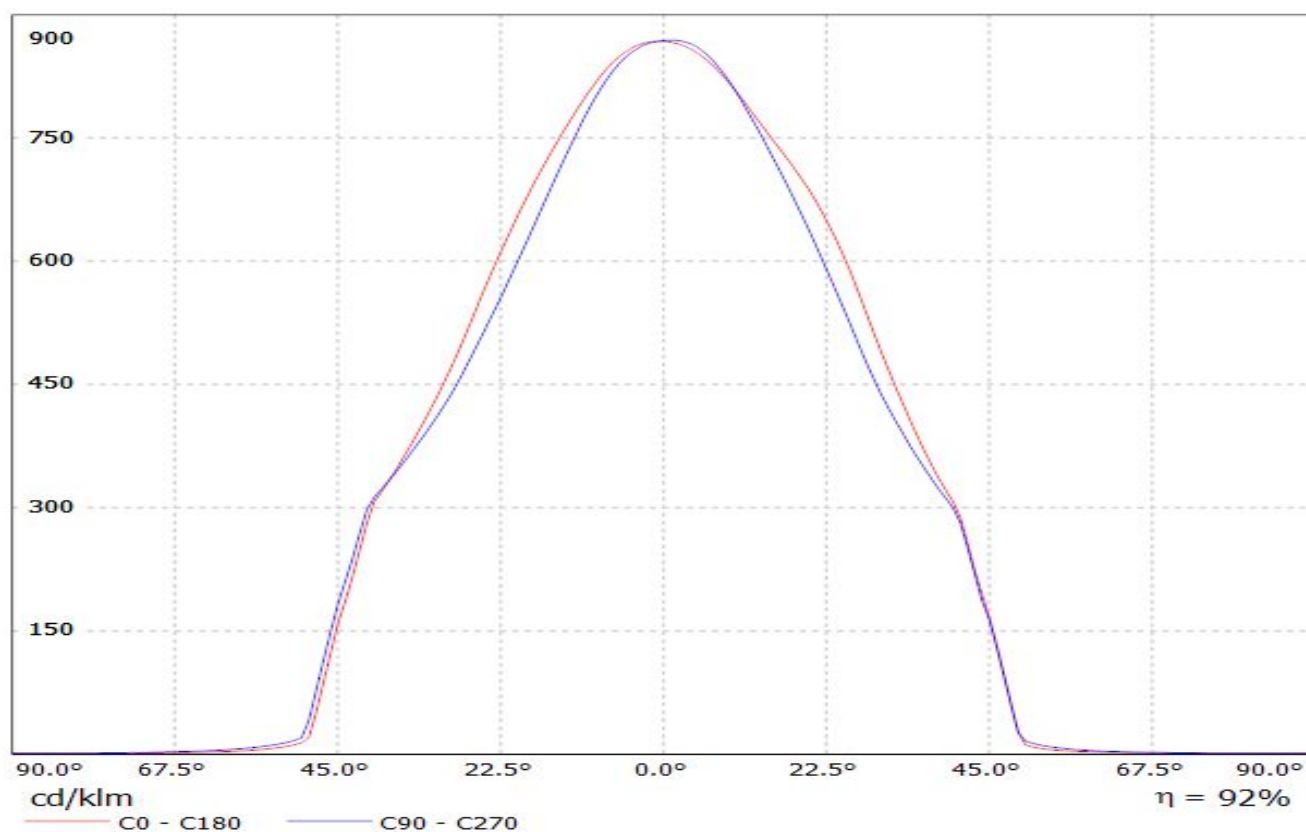
D

A

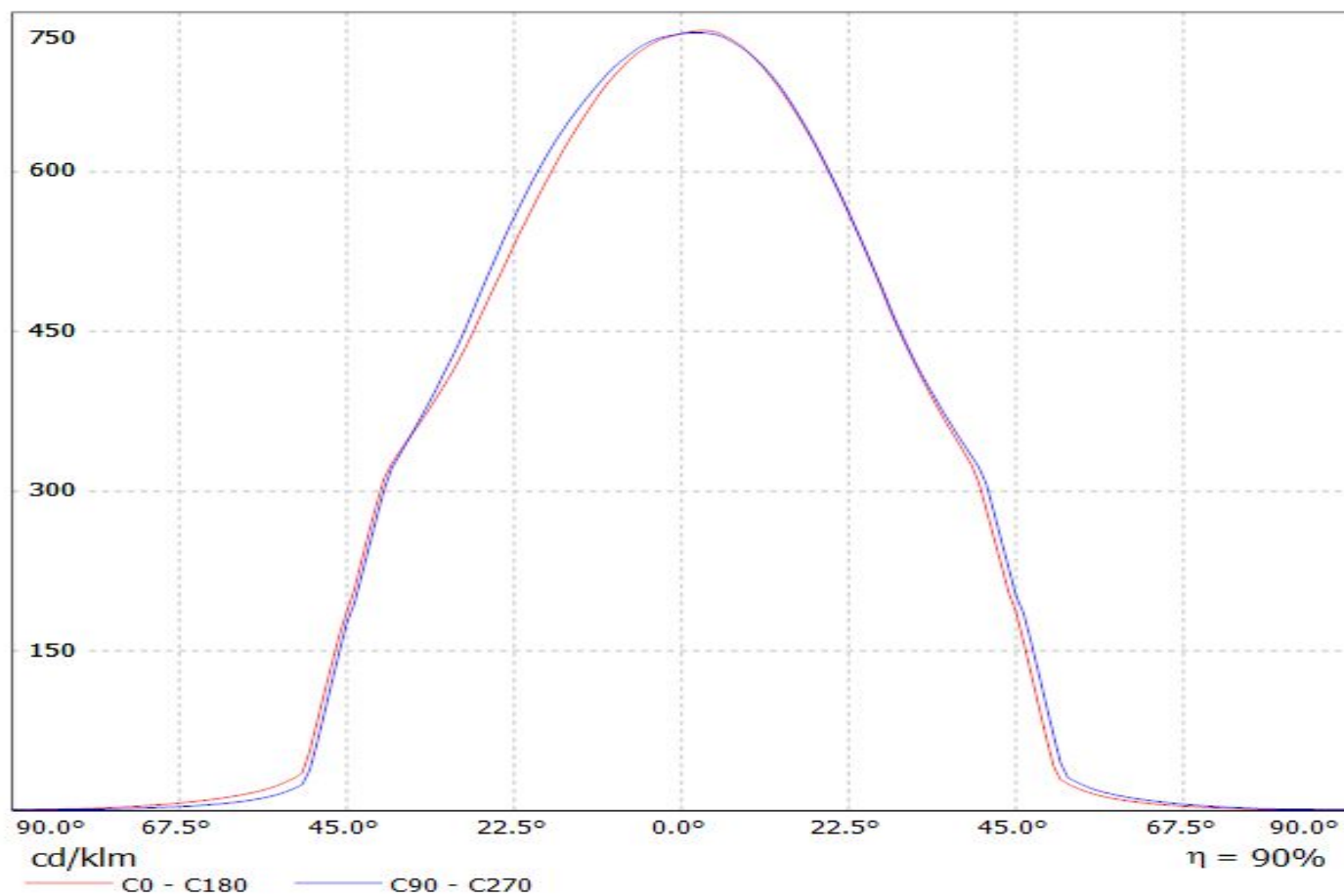
LEDIL OY C12097_MINNIE-WWW_(LUXEON-M) 91.6% / LDC (Linear)

Luminaire: LEDIL OY C12097_MINNIE-WWW_(LUXEON-M) 91.6%

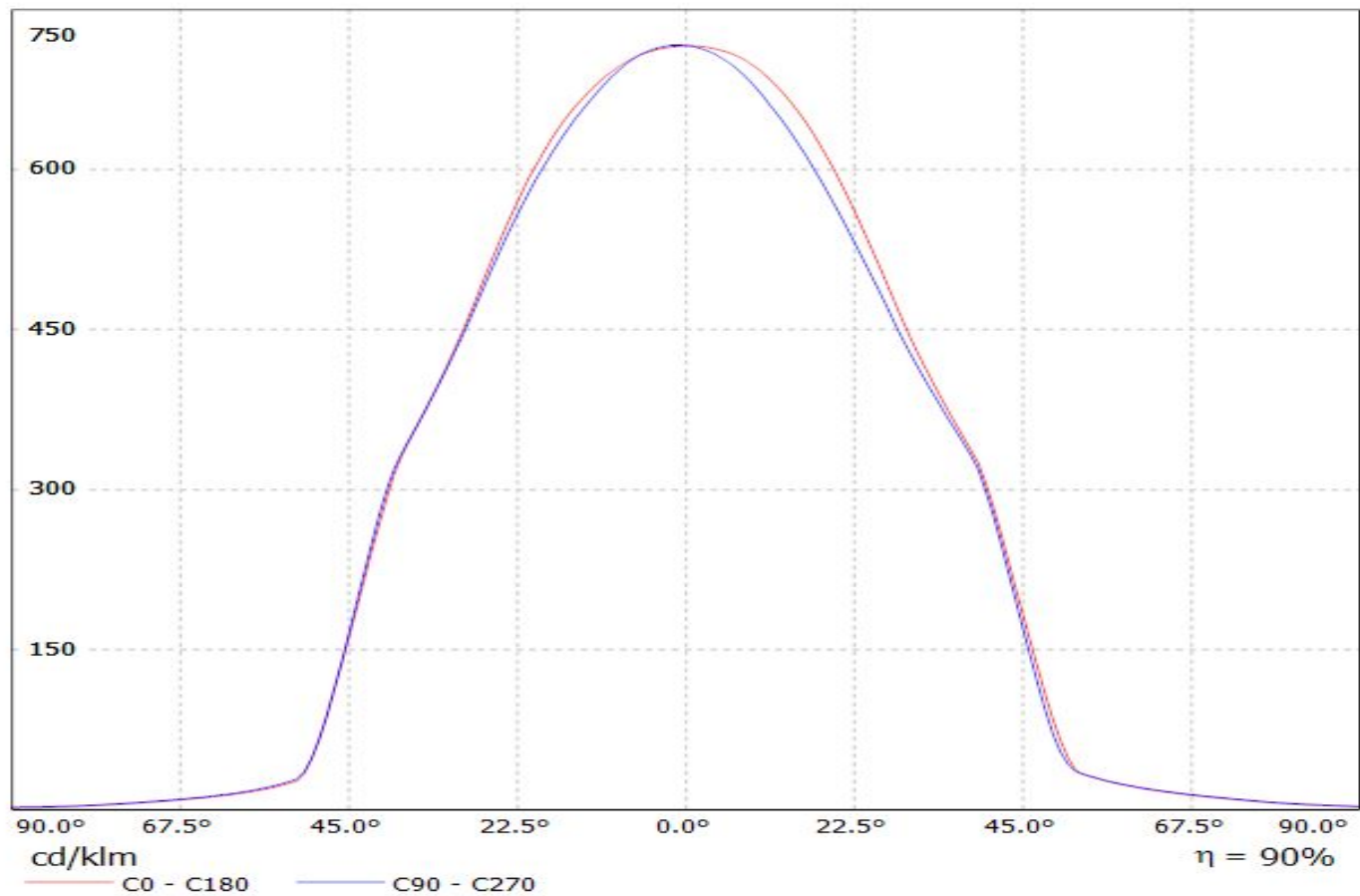
Lamps: 1 x LUXEON-M



Luminaire: LEDiL Oy CA12883_MINNIE-WWW_(Cree_XHP70)
Lamps: 1 x Cree_XHP70_261.339lm@250mA_P=1.3827W_I=0.2499A



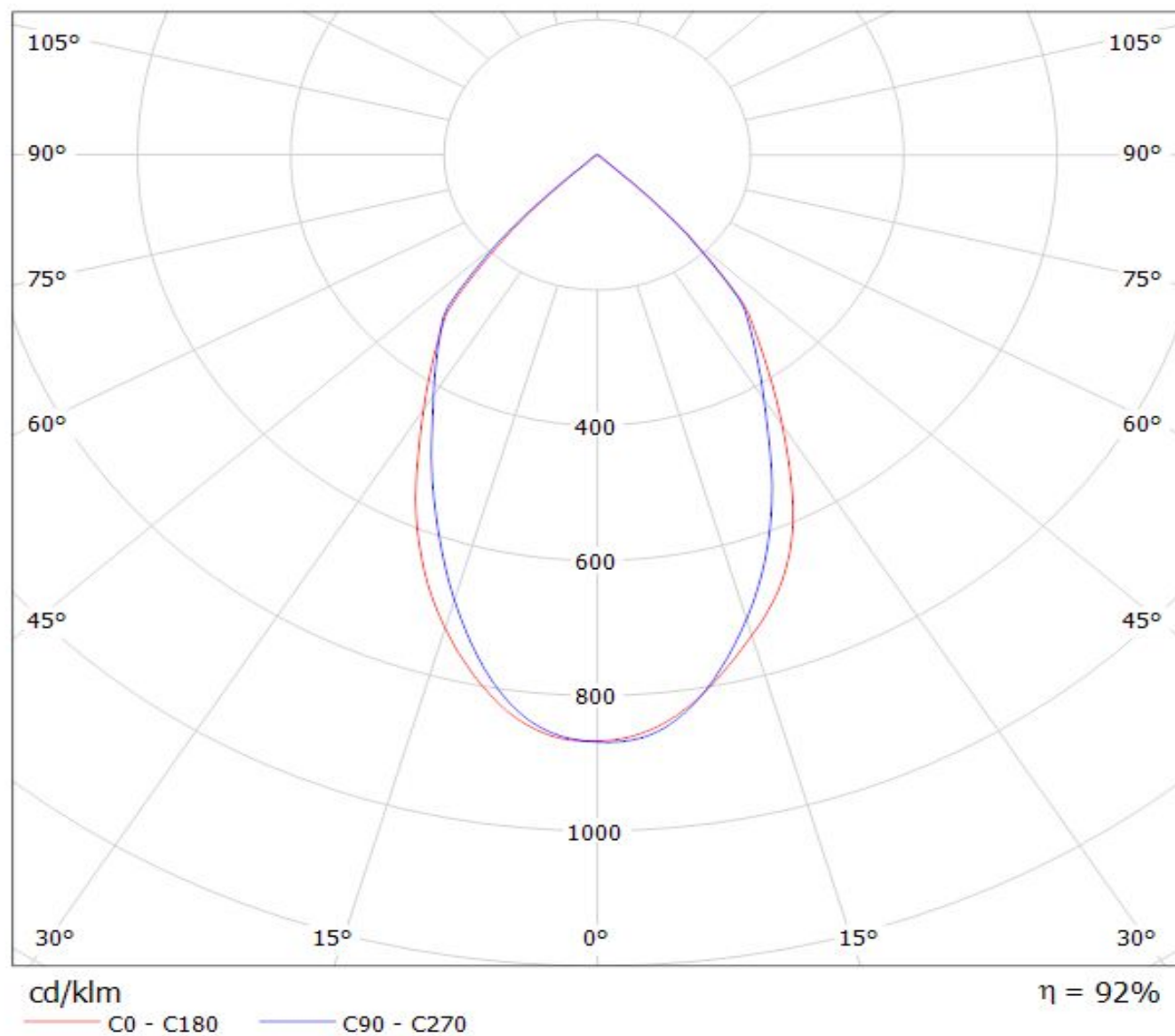
Luminaire: Ledil CA12883_MINNIE-WWW_(MHD-G)
Lamps: 1 x Cree MHD-G_530.44lm@100mA_P=3.0W_I=0.100A



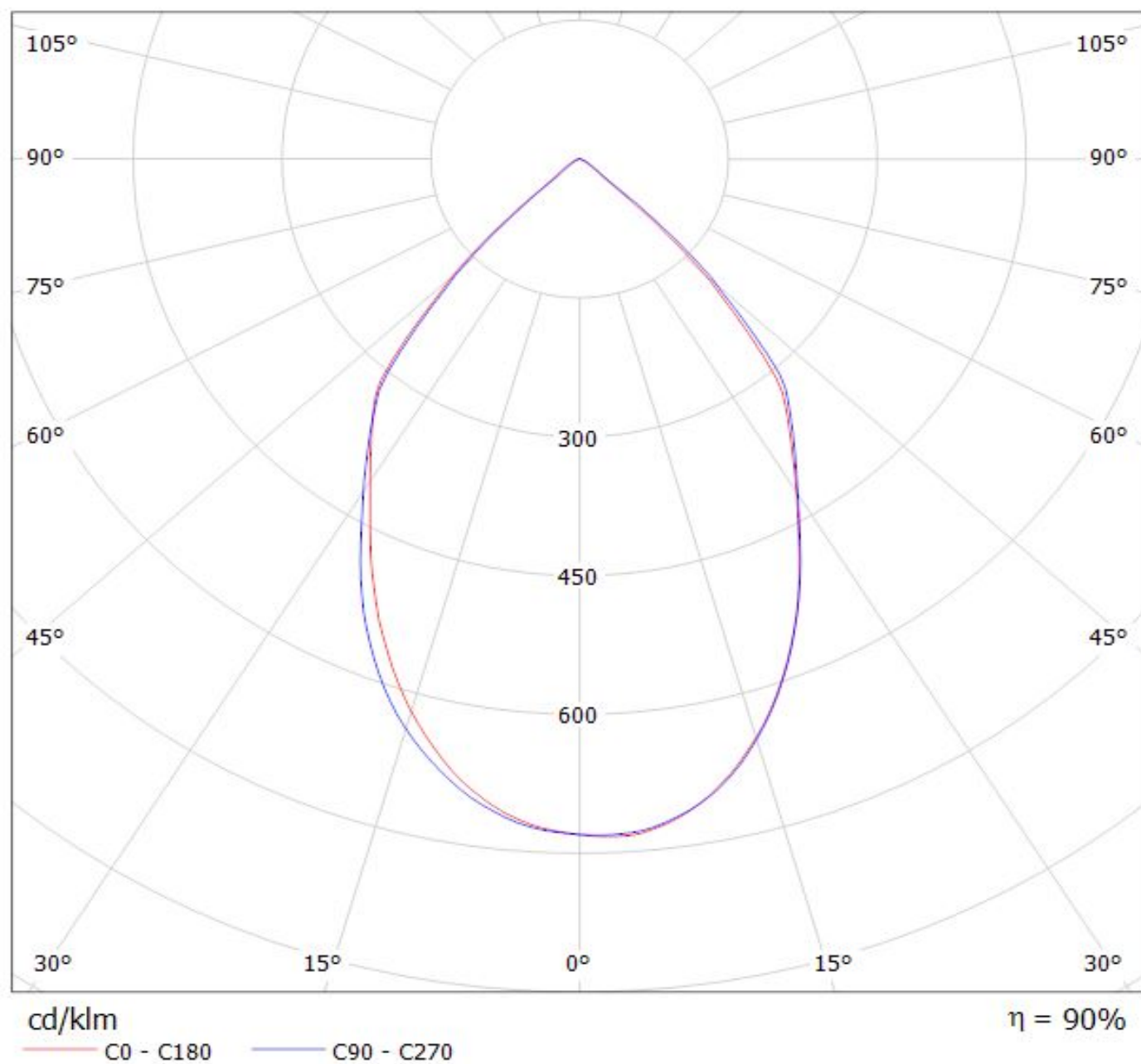
LEDIL OY C12097_MINNIE-WWW_(LUXEON-M) 91.6% / LDC (Polar)

Luminaire: LEDIL OY C12097_MINNIE-WWW_(LUXEON-M) 91.6%

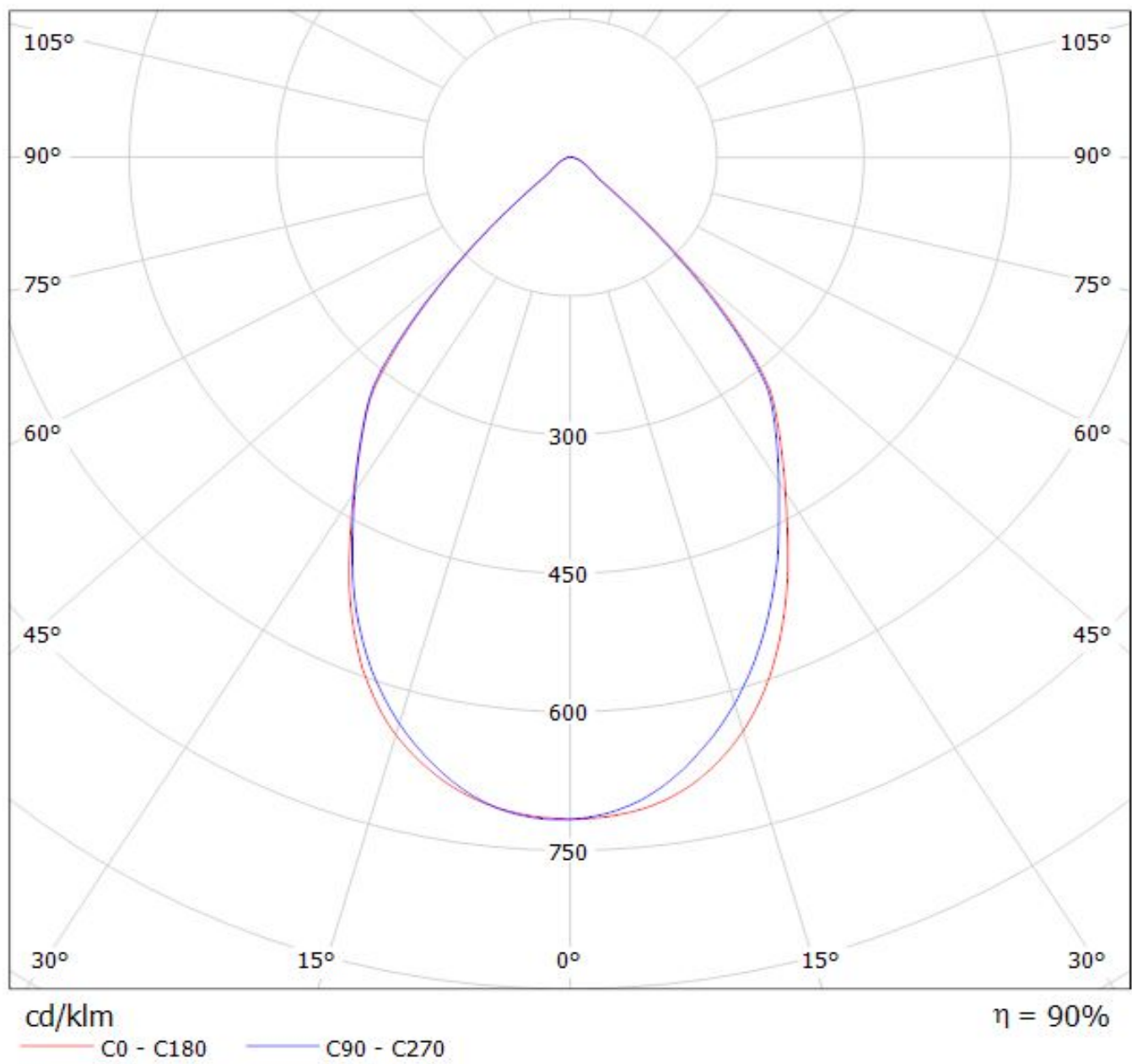
Lamps: 1 x LUXEON-M



Luminaire: LEDiL Oy CA12883_MINNIE-WWW_(Cree_XHP70)
Lamps: 1 x Cree_XHP70_261.339lm@250mA_P=1.3827W_I=0.2499A



Luminaire: Ledil CA12883_MINNIE-WWW_(MHD-G)
Lamps: 1 x Cree MHD-G_530.44lm@100mA_P=3.0W_I=0.100A



NOTE: The typical divergence will be changed by different color, chip size and chip position tolerance. The typical total divergence is the full angle measured where the luminous intensity is half of the peak value.

GENERAL INFORMATION

- Product series especially designed & optimized for series of LEDs.
- Special care taken to make light distribution as uniform as possible.
- Fastening to heat sink with a PU foam adhesive tape of automotive grade. Please find fastening details by clicking link: http://www.ledil.com/datasheets/DataSheet_TAPE.pdf

NOTE 1: We advise customer to ensure the suitability and sufficiency of the bond in the end product. For example, mechanical stress, vibration and holes on the surface of the circuit board weaken the strength of the tape.

NOTE 2: Assembly to the surface must be made straight, so the tape bonds constant and balanced with fastening surface. Slanted assembly might cause unbalanced bond to the surface. All surfaces where tape is applied must be clean, dry and free from grease and dirt.

If cleaning of PCB surfaces is needed, please follow strictly the cleaning instructions of your LED manufacturer - this is important as cleaning shall under no circumstances damage LEDs or other electronics components on the PCB.

Further note that optical components shall not be cleaned with any chemicals - only micro fiber cloth may be used to remove fingerprints or other traces from handling.