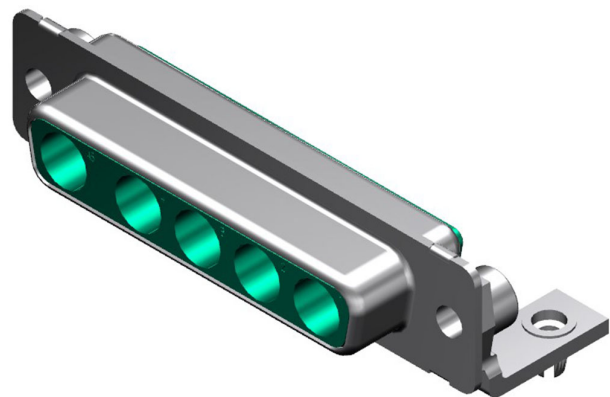




**Part Number :** [1731071086](#)  
**Product Description :** FCT Mixed Layout D-Sub Housing, Female, Tin-plated Shell, 14.50mm Riveted Metal Bracket and #4-40 Clinch Nut, 5 Circuits Unloaded, Green Insulator  
**Series Number :** 173107  
**Status :** Active  
**Product Category :** D-Sub Connectors  
**Engineering Number :** FM5W5S-1002




Documents & Resources

Drawings  
[1731071086\\_sd.pdf](#)

Product Environment Compliance

Compliance

GADSL/IMDS	Not Relevant
China RoHS	
EU ELV	Not Relevant
Low-Halogen Status	Low-Halogen per IEC 61249-2-21
REACH SVHC	Contains Lead per D(2024)6225-DC (07 Nov 2024)
EU RoHS	Compliant with Exemption 6(c) per EU 2015/863

Multiple Part Product Compliance Statements

- Eu RoHS
- REACH SVHC
- Low-Halogen

Multiple Part Industry Compliance Documents

- IPC 1752A Class C
- IPC 1752A Class D
- Molex Product Compliance Declaration
- IEC-62474

## Part Details

### General

Status	Active
Category	D-Sub Connectors
Series	173107
Description	FCT Mixed Layout D-Sub Housing, Female, Tin-plated Shell, 14.50mm Riveted Metal Bracket and #4-40 Clinch Nut, 5 Circuits Unloaded, Green Insulator
Magnetic	Yes
Product Name	FCT Products
Type	Mixed Layout
UPC	191130105625

### Electrical

Shielded	Yes
----------	-----

### Physical

Circuits (Loaded)	0
Circuits (maximum)	5
Color - Resin	Green
Gender	Female
Material - Resin	PBT
Material - Shell	Steel
Net Weight	12.000/g
Number of Rows	1
Packaging Type	Carton
Panel Mount	Rear
Panel Mount Method	Thread-In
PCB Locator	Yes
PCB Retention	Yes
PCB Thickness - Recommended	1.60mm

Plating - Shell	Tin
Polarized to Mating Part	Yes
Polarized to PCB	Yes
Ports	1
Temperature Range - Operating	-55° to +130°C
Waterproof / Dustproof	No

---

## Mates With / Use With

### Mates with Part(s)

Description	Part Number
Mates With	FCT Mixed Layout D-Sub, Size 3, 5W5, Plug

### Use with Part(s)

Description	Part Number
Use With	FCT Coaxial, High Power, High Voltage, or Pneumatic Contacts