

Soft start valves - Series MX

Product code: MX2-1/2-AV

Datasheet creation date: 10/12/2025 08:39

Check the most updated document online [click here](#)

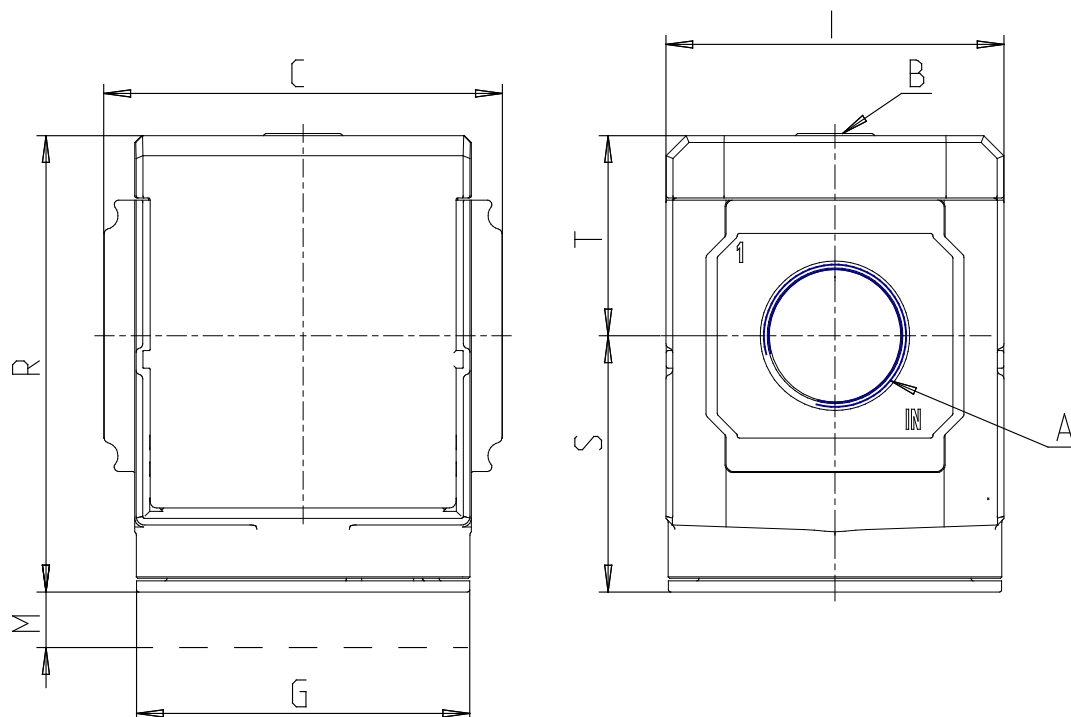


TECHNICAL DATA

Series	MX
Size	2
PORTS (IN - OUT)	1/2 = G1/2
Soft start valves	AV
Flow direction	= from left to right (standard)

Soft start valves - Series MX

Product code: MX2-1/2-AV



DIMENSIONS

A	G1/2
B (bar)	G1/8
C (mm)	70.0
G (mm)	65
I (mm)	68
M (mm)	46.5
R (mm)	88
S (mm)	50.5
T (mm)	37.5
Weight (kg)	0.4