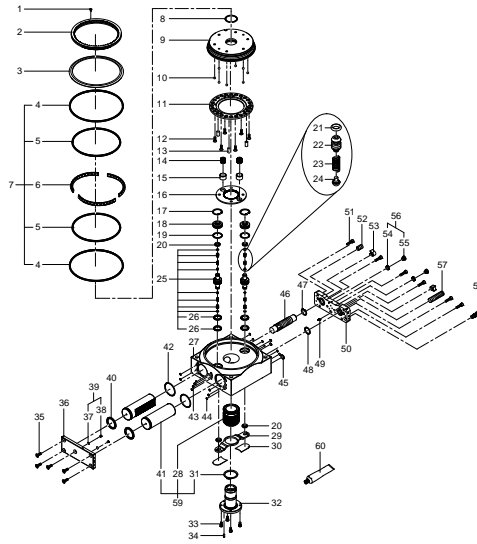


548088 DHTG-140-4-A Rotary indexing table - Series till 08-2015



## 548088 DHTG-140-4-A Rotary indexing table - Series till 08-2015

Pos.	Part no.	Type	Note	Qty.	Unit
A	736121	DHTG-140-DYNAMISCH Set of wearing parts	Spare parts: 8, 17, 19, 20, 21, 22, 23, 24, 26, 31, 40, 60 <a href="#">Replacing the wearing parts</a>	1	PC
1	218261	DIN 921-M3X6-5.8 Flat Head Screw	Tightening torque 0.6 Nm / 0.4 lbf ft	1	PC
2	742854	DHTG-140 Clamping ring		1	PC
3	736125	DHTG-140 Disc seal	Not included in wearing-parts kit	1	PC
4			Not available separately, see position 7	2	PC
5			Not available separately, see position 7	2	PC
6			Not available separately, see position 7	3	PC
7	742858	DHTG-140 Bearing module		1	PC
8			Not available separately, see position A Grease using during assembly. See position 60	1	PC
9	742862	DHTG-140 Plate-1		1	PC
10			Not available separately, see position 998	8	PC
11			Not available separately, see position 997	1	PC
12	216415	DIN 7991-M5X16-8.8 Countersunk screw	Tightening torque 4 Nm / 3.0 lbf ft	6	PC
13	367167	DIN 6325-8M6X16 Cylindrical pin		3	PC
14	744172	DHTG-140/-220 Compression spring		2	PC
15	744173	DHTG-140/-220 Sleeve		2	PC
16	744170	DHTG-140 Annular gear		1	PC
17	200630	DIN 472-30X1,2 Retaining ring		2	PC
18	742886	DHTG-140 Cover		2	PC
19			Not available separately, see position A Grease using during assembly. See position 60	2	PC
20			Not available separately, see position A Grease using during assembly. See position 60	4	PC
21			Not available separately, see position 25+999 Grease using during assembly. See position 60	4	PC
22	5277559	DHTG-65/90/140/220 Stop pin		4	PC
23			Not available separately, see position 25+999	4	PC
24			Not available separately, see position 25+999 Grease using during assembly. See position 60	4	PC
25	742901	DHTG-140 Bolt	Grease using during assembly. See position 60	2	PC
26			Not available separately, see position 25+999 Grease using during assembly. See position 60	4	PC
27			Not available	1	PC
28	742870	DHTG-140 Pinion		1	PC
29	742878	DHTG-140 Sheet metal		1	PC

Pos.	Part no.	Type	Note	Qty.	Unit
30	742882	DHTG-140 Covering		2	PC
31	214585	DIN 471-40X1,75 Retaining ring		1	PC
32	742874	DHTG-140 Flange		1	PC
33	200669	ISO 4762-M5X10-10.9 Socket head screw	Tightening torque 5.9 Nm / 4.4 lbf ft	4	PC
34	219372	DIN 6325-4M6X12 Cylindrical pin		1	PC
35	253037	DIN 7991-M6X16-8.8 Countersunk screw	Tightening torque 5.9 Nm / 4.4 lbf ft	5	PC
36	5277548	DHTG-140 Plate module		1	PC
37		OK-M3 Sealing ring	Not available separately, see position 39	1	PC
38		B-M3-S9 Plug screw	Not available separately, see position 39 Tightening torque 0.5 Nm / 0.4 lbf ft	1	PC
39	30979	B-M3-S9 Blanking plug		2	PC
40			Not available separately, see position A Grease using during assembly. See position 60	2	PC
41			Not available separately, see position 59	2	PC
42			Not available separately, see position 998	2	PC
43			Not available separately, see position 998	4	PC
44			Not available separately, see position 998	13	PC
45			Not available separately, see position 998	1	PC
46	651470	YSRD-16-20-C Shock absorber		1	PC
47	204471	DIN 472-22X1 Retaining ring		1	PC
48			Not available separately, see position 998	1	PC
49			Not available separately, see position 998	1	PC
50	2757665	DHTG-140 Plate module		1	PC
51	670949	ISO 4762-M6X16-8.8 Socket head screw	Tightening torque 9.9 Nm / 7.3 lbf ft	6	PC
52			Not available separately, see position 997	1	PC
53	699257	DGSL-20 Clamping component	Tightening torque 2.5 Nm / 1.8 lbf ft	2	PC
54		OK-1/8 Sealing ring	Not available separately, see position 56	1	PC
55		DIN 908-G1/8-ST Plug screw	Not available separately, see position 56	2	PC
56	3568	B-1/8 Blanking plug		2	PC
57			Not available separately, see position 997	1	PC
58	396917	GRLA-1/8-QS-8-D Hollow bolt module	Tightening torque 5.5 Nm / 4.1 lbf ft	1	PC
59	742866	DHTG-140 Pinion module		1	PC
60	394819	LUB-E1-SILIKONFREI-20ML Lubricating grease		1	PC
99 7	555446	DADM-CK-140-3 Indexing conversion kit	Please order this position from the catalogue as an accessory.	1	PC
99 8	736117	DHTG-140-STATISCH Set of wearing parts		1	PC