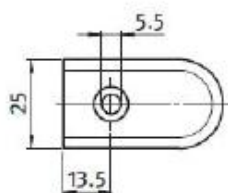
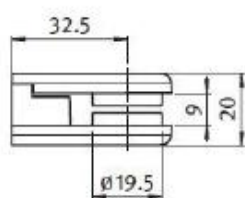


Glass Panel Clamp

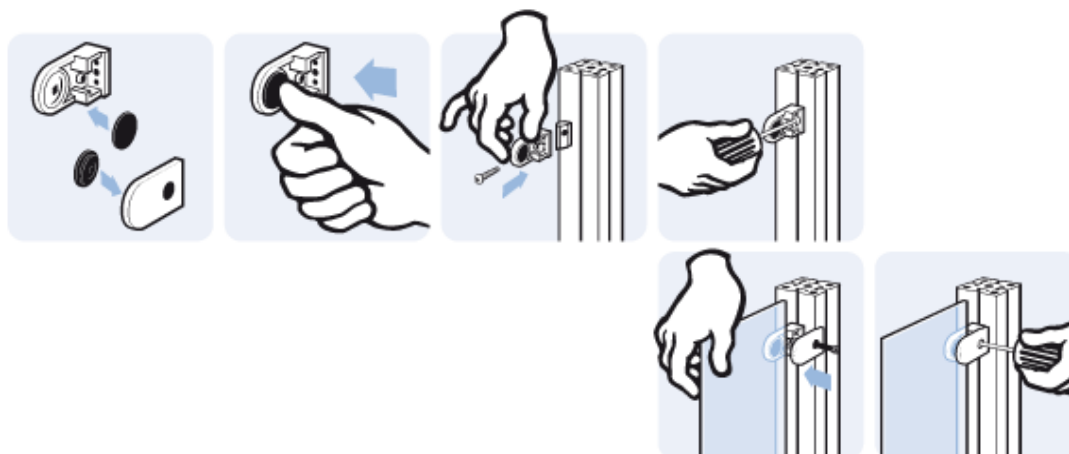
Die-cast Zinc, with Assembly Set
Description To fix glass and other panels
Installation 1 screw M5 x 16,
Set 5 rubber pads for panels 2 - 9 mm
Material Die-cast zinc
Surface Alu color powder coated



Glass Panel Clamp, with Assembly Set

Weight [g]

74.0



Can be used on both systems

RS Article no.	Product Description	Compatible with groove size	Product system	Structural element type
7675771	Glass panel clamp with mounting kit	6 / 8	30 / 40	Panel accessory