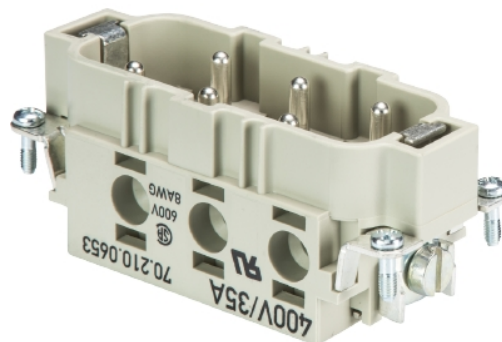


## Data sheet

Commercial Art.No.: 70.210.0653.0

male insert POW STS 6 6,0 40 AG

revos POWER 6 pole + ground, male insert 400V/35A, screw connection



certificates / approvals



## Technical data

### general

model	pin insert
flammability class of insulation material acc. with UL94	HB
color	grey
mating cycles	200
pollution degree	3
suitable for modular version	no
operating temperature range min.	-40 °C
operating temperature range max.	120 °C

### connection data

connection type	screw connection
number of poles	6
plus switching contacts	0
number of pole for rated current 2	0
number of pole for rated current 3	0
total number of poles (without ground contact)	6
with wire protection	yes
min. conductor diameter rigid (solid/stranded)	2.5 mm <sup>2</sup>
max. conductor diameter rigid (solid/stranded)	6 mm <sup>2</sup>
protective contact	yes

### technical data UL/CSA

nominal voltage according to UL/CSA	600 V
nominal current according UL	35 A
nominal current according CSA	35 A

min. conductor cross section flexible wire	2.5 mm <sup>2</sup>
max. conductor cross section flexible wire	6 mm <sup>2</sup>
conductor cross section flexible AWG wire	14-8 AWG

**model**

with housing	no
--------------	----

**contacts**

contact material	copper alloy
surface	silver-plated
contact resistance	≤ 0.6 mOhm
wire strip length	10 mm

**screws head design/recomm. Torque**

mounting screws	H1/0.5-0.7 Nm
clamping screws	H1/1.2-1.6 Nm
ground conductor screws	M5/2.0-2.5 Nm slot

**technical data DIN EN 61984**

nominal voltage	400 V
nominal voltage face/ground	400 V
nominal current	35 A
rated impulse voltage	6 kV

**classification**

ECLASS 11	
ECLASS 8.1	27440205
ETIM 9.0	EC000438
ETIM 8.0	EC000438
ETIM 7.0	EC000438
ETIM 6.0	EC000438
ETIM 5.0	EC000438
ETIM 4.0	EC000438
ETIM 3.0	EC000438

**product compliance**

ROHS conformity status	compliant/exempted
ROHS exceptions	III-6(c)
REACH-SVHC conformity status	Duty-To-Declare
REACH-SVHC substances	Lead
REACH-SVHC CAS numbers	7439-92-1