

THIS DRAWING IS UNPUBLISHED.

RELEASED FOR PUBLICATION

20

© COPYRIGHT 20

BY -

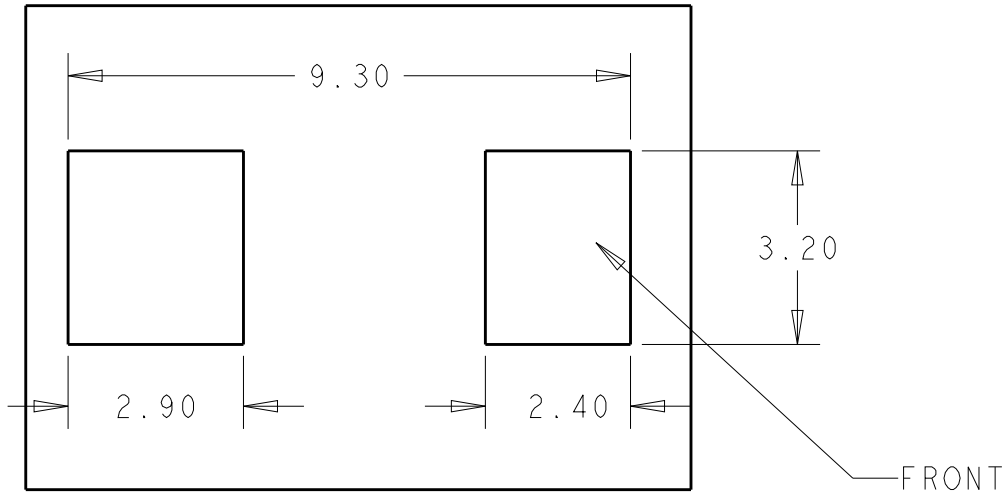
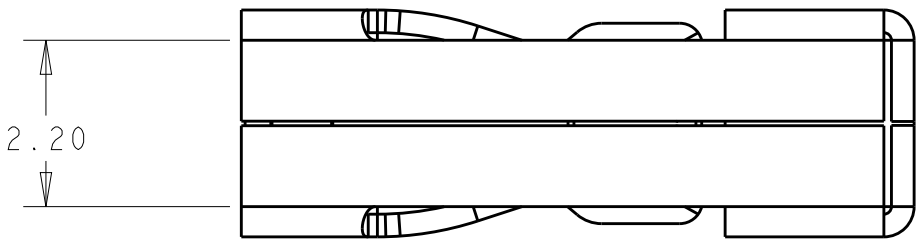
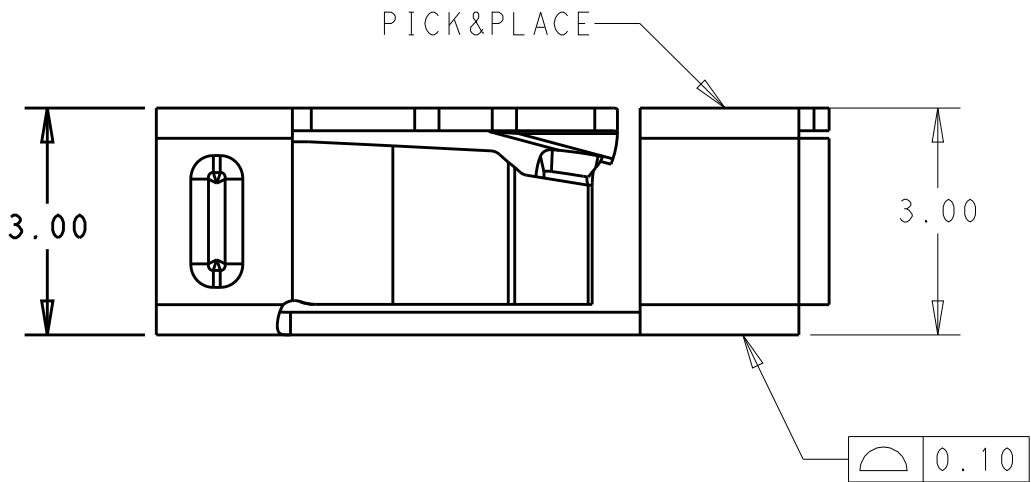
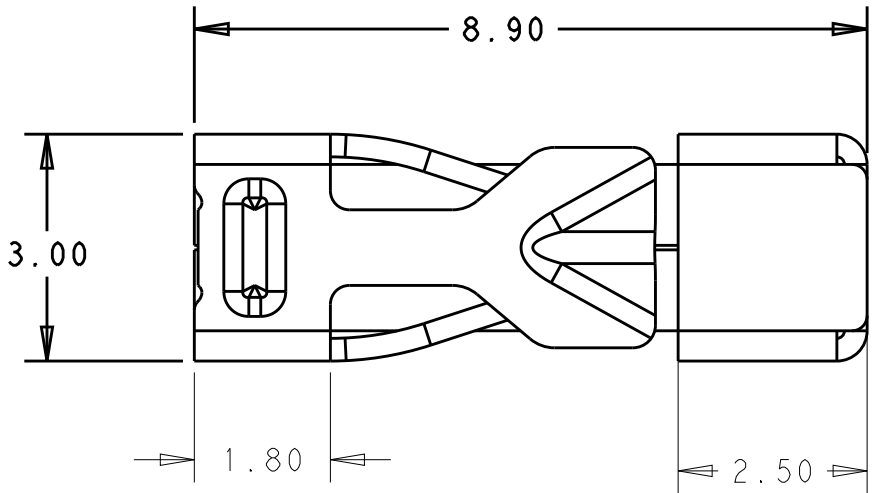
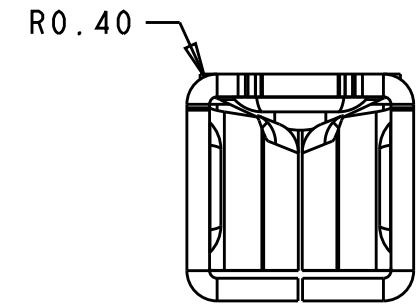
ALL RIGHTS RESERVED.

REVISIONS

P	LTR	DESCRIPTION	DATE	DWN	APVD
	A	FIRST VERSION	04AUG2016	G.F	S.M
	A1	SHOW THE PART NO	26OCT2016	G.F	S.M

NOTES :


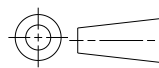
1. MATERIALS AND FINISH:
CONTACTS: COPPER ALLOY, FINISH: TIN OVER NICKEL
UNDERPLATE
2. MUST COMPLY WITH DIRECTIVE 2002/95/EC (ROHS)
3. THIS PRODUCT HAS NOT COMPLETED VALIDATION TESTING
4. WIRE TYPES AND SIZES ACCEPTED
WIRE SIZE: 18AWG SOLID & STRANDED (CONDUCTOR NO:16)
20AWG SOLID & STRANDED (CONDUCTOR NO:26)
22AWG SOLID & STRANDED (CONDUCTOR NO:7)
TIN-DIPPED FOR ALL STRANDED WIRE.
MAX INSULATION OD: 2.05mm MAX.
STRIP LENGTH: 6.6+/-0.3mm
5. PACKAGED IN TAPE AND REEL
6. NO RECONNECTION OF SMALLER CONDUCTOR CROSS-SECTIONS AFTER 18AWG WIRE FIRST INSERTION



RECOMMENDED PCB LAYOUT

SCALE 10:1

PART NO: 2834167-3

THIS DRAWING IS A CONTROLLED DOCUMENT.		DWN 26OCT2016 GEORGE FU	 TE Connectivity		
		CHK 26OCT2016 SHI MING			
		APVD 26OCT2016 XU XIANG			
		PRODUCT SPEC 108-137166			
DIMENSIONS: mm		TOLERANCES UNLESS OTHERWISE SPECIFIED:	NAME SMT-RELEASABLE SLIM CONTACT		
		0 PLC ±-	SIZE A3		
		1 PLC ±0.20			
		2 PLC ±0.13			
		3 PLC ±			
		4 PLC ±			
MATERIAL TBD		FINISH -	DRAWING NO C-2834167		
			RESTRICTED TO -		
			SCALE 6:1 SHEET 1 OF 1 REV A1		
			CUSTOMER DRAWING		