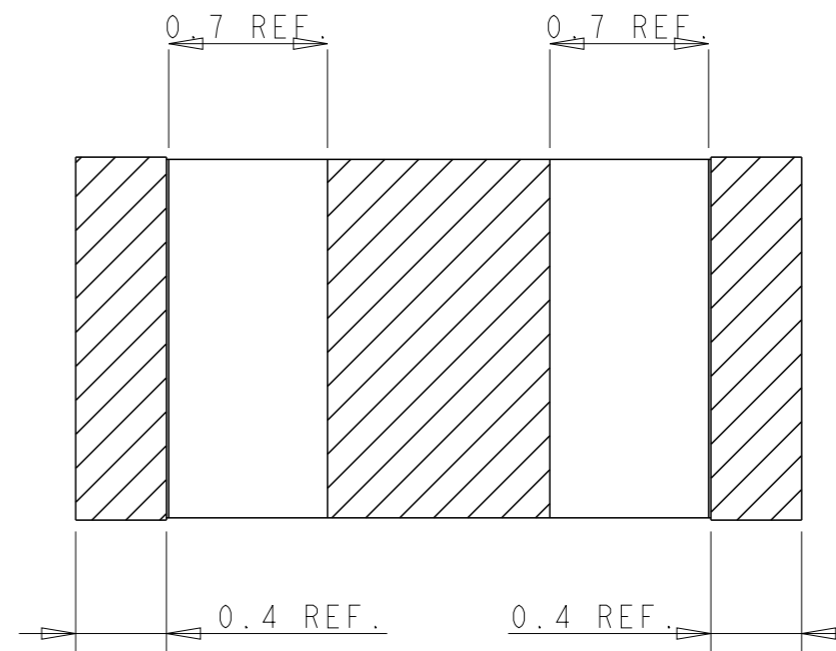
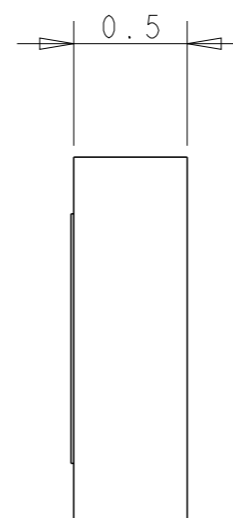
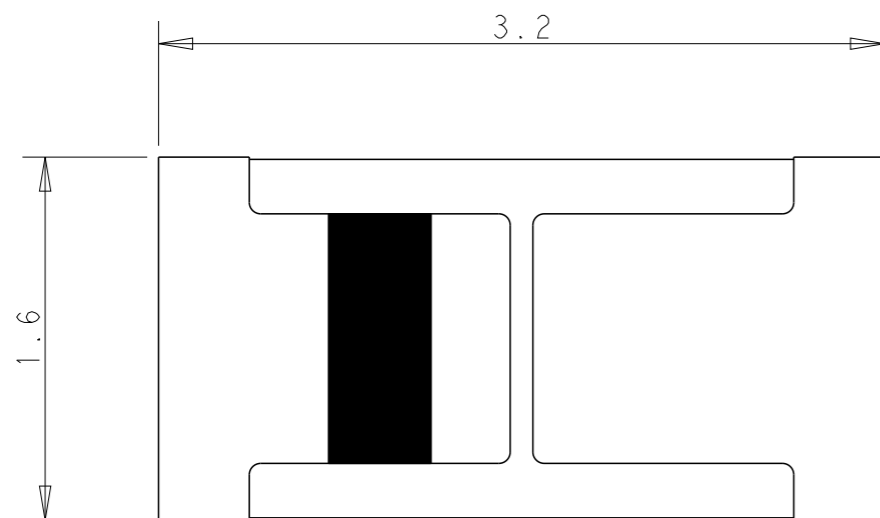
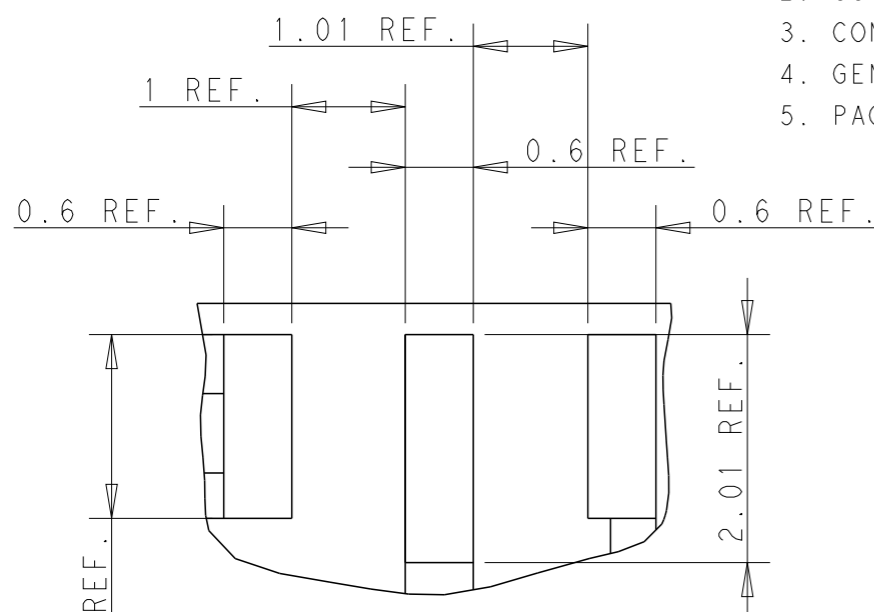


P	LTR	DESCRIPTION	DATE	DWN	APVD
	A	REVISED PER ECN-24-297341	10DEC2024	DW	VK



NOTES: UNLESS OTHERWISE SPECIFIED.

1. MATERIAL : CERAMIC
2. CONSULT TE CONNECTIVITY DATA SHEET : L000951
3. CONTACT TE CONNECTIVITY ENGINEERING PRIOR TO DESIGNIN INTO AN APPLICATION.
4. GENERAL TOLERANCES :  $\pm 0.15$
5. PACKAGING : TAPE AND REEL PACKAGED, SEE SHEET 2



RECOMMENDED PCB LAYOUT  
SCALE 15:1

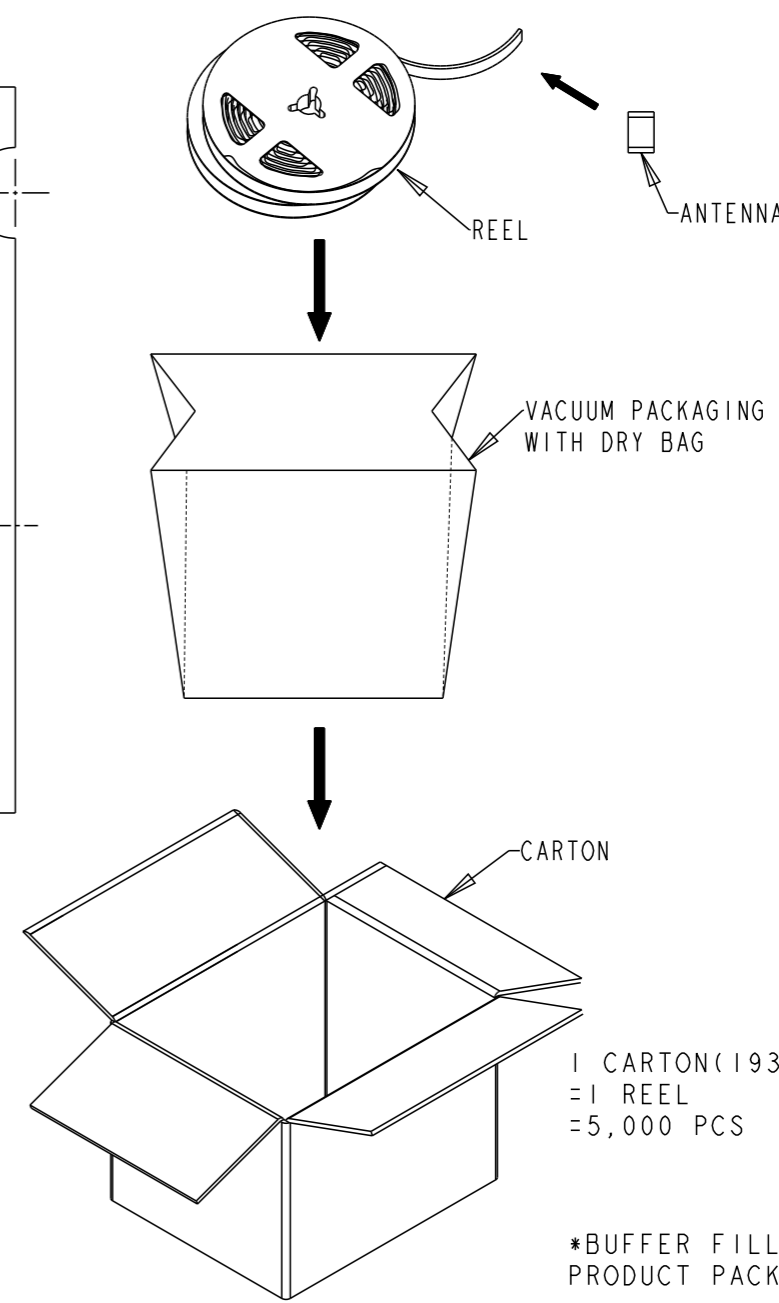
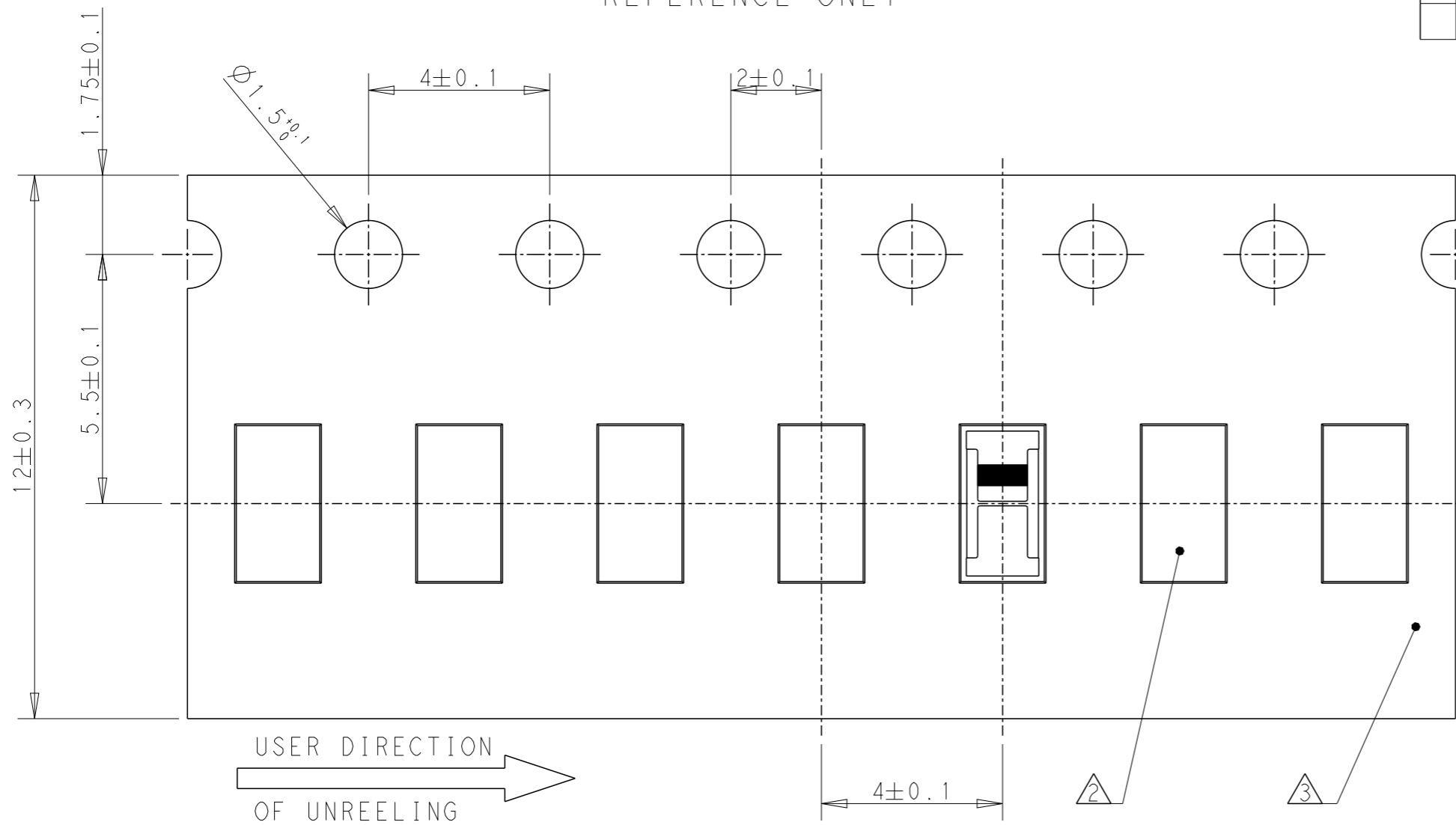
(2x) 1.62 REF.

TAPE AND REELED	L000951-01
PACKAGING	PART NUMBER

THIS DRAWING IS A CONTROLLED DOCUMENT.		DWN DW.PARK	28JUN2024	<b>TE</b> TE Connectivity											
DIMENSIONS: mm		CHK SJ.NOH	28JUN2024												
TOLERANCES UNLESS OTHERWISE SPECIFIED:		APVD NG.WEITAT	28JUN2024												
<table border="0"> <tr><td>0 PLC</td><td>±-</td></tr> <tr><td>1 PLC</td><td>±-</td></tr> <tr><td>2 PLC</td><td>±-</td></tr> <tr><td>3 PLC</td><td>±-</td></tr> <tr><td>4 PLC</td><td>±-</td></tr> <tr><td>ANGLES</td><td>±-</td></tr> </table>		0 PLC	±-		1 PLC	±-	2 PLC	±-	3 PLC	±-	4 PLC	±-	ANGLES	±-	NAME Chip Ant, GPS+DUAL Wi-Fi, 3.2x1.6mm
0 PLC	±-														
1 PLC	±-														
2 PLC	±-														
3 PLC	±-														
4 PLC	±-														
ANGLES	±-														
MATERIAL	FINISH	PRODUCT SPEC	APPLICATION SPEC	SIZE	CAGE CODE	DRAWING NO	RESTRICTED TO								
-	-	-	-	A3	00779	©-L000951	-								
CUSTOMER DRAWING		SCALE 30:1		SHEET 1 OF 4		REV A									

AS SHOWN L000951-01  
ANTENNA WITH REEL PACKAGING  
REFERENCE ONLY

P	LTR	DESCRIPTION	DATE	DWN	APVD
		SEE SHEET 1			



NOTES.

1. UNLESS OTHERWISE SPECIFIED TOLERANCE PER EIA-481-D

2 ORIENT PARTS AS SHOWN.

3 MATERIAL : P.S 0.4mm THICKNESS, COLOR : BLACK, CONDUCTIVE  
WHEN ALTERNATIVE MATERIAL (PET, P.P) USE, CONSULT ECO PRIOR TO MANUFACTURER.

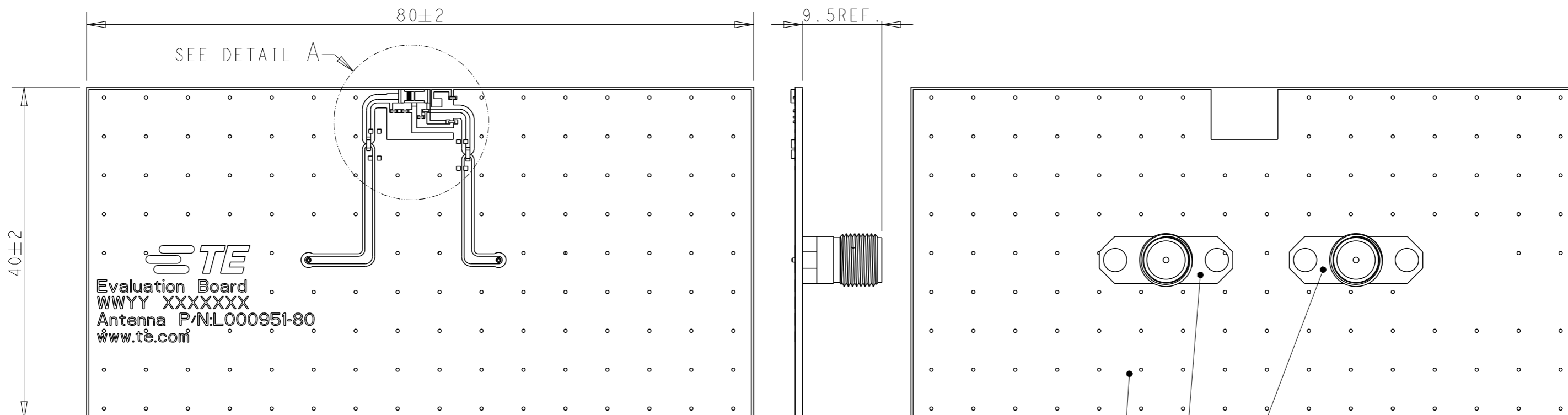
4. Q'TY/REEL : 5000 PCS/REEL

THIS DRAWING IS A CONTROLLED DOCUMENT.		DWN DW.PARK 28JUN2024	TE Connectivity	
DIMENSIONS: mm		CHK SJ.NOH 28JUN2024		
TOLERANCES UNLESS OTHERWISE SPECIFIED:		APVD NG.WEITAT 28JUN2024	NAME Chip Ant, GPS+DUAL Wi-Fi, 3.2x1.6mm	
0 PLC ±- 1 PLC ±- 2 PLC ±- 3 PLC ±- 4 PLC ±- ANGLES ±-		PRODUCT SPEC -	APPLICATION SPEC -	
MATERIAL -		FINISH -	WEIGHT -	RESTRICTED TO -
		SIZE A3		CAGE CODE 00779
		DRAWING NO L000951		SCALE 8:1
		CUSTOMER DRAWING		SHEET 2 OF 4
				REV A

# ANTENNA WITH EVB ASS'Y

## REVISIONS

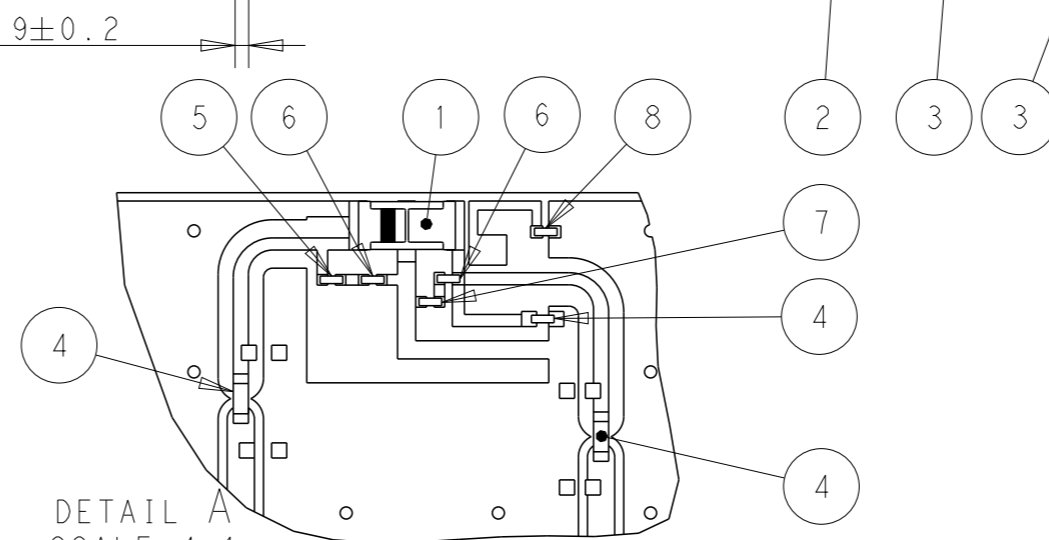
P	LTR	DESCRIPTION	DATE	DWN	APVD
		SEE SHEET 1			



Evaluation Board
   
 WWYY XXXXXX
   
 Antenna P/N: L000951-80
   
 www.te.com

NOTES: UNLESS OTHERWISE SPECIFIED.

- MATERIAL : SEE TABLE.
- FINISH : EVB ASSEMBLY WITH SOLDER PROCESS
- SILKSCREEN : WHITE EPOXY INK
  - A. TE LOGO, TE P/N
  - B. WORD REV., FOLLOWED BY THE LATEST REVISION, AS SHOWN/
  - C. 4 DIGITS DATE CODE : FIRST 2 DIGITS FOR THE WEEK CODE AND THE 2ND TWO DIGITS FOR THE YEAR CODE.
  - OTHERS : SPECIFIED TE SOURCE CODE NUMBER DIGITS AS REQUIRED.
- CONSULTS TE CONNECTIVITY DATA SHEET L000951
- CONTACT TE CONNECTIVITY ENGINEERING PRIOR TO DESIGNING INTO AN APPLICATION.
- PACKAGING: SECURELY VACUUM PACKAGED IN BULK.

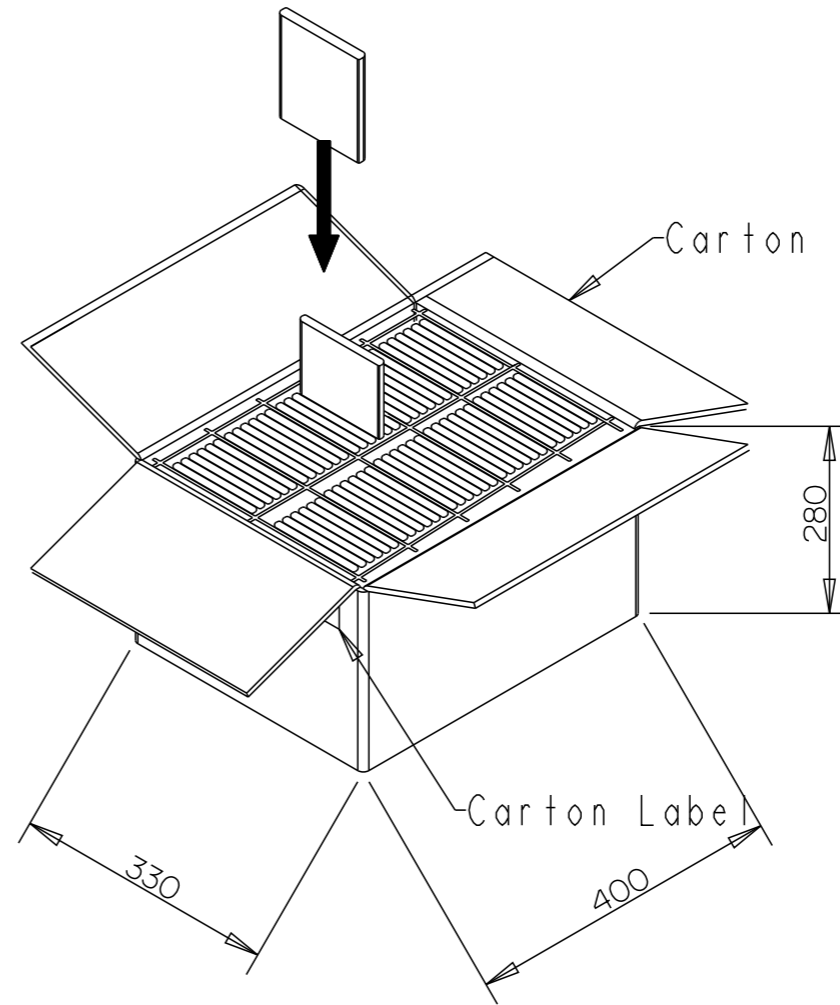
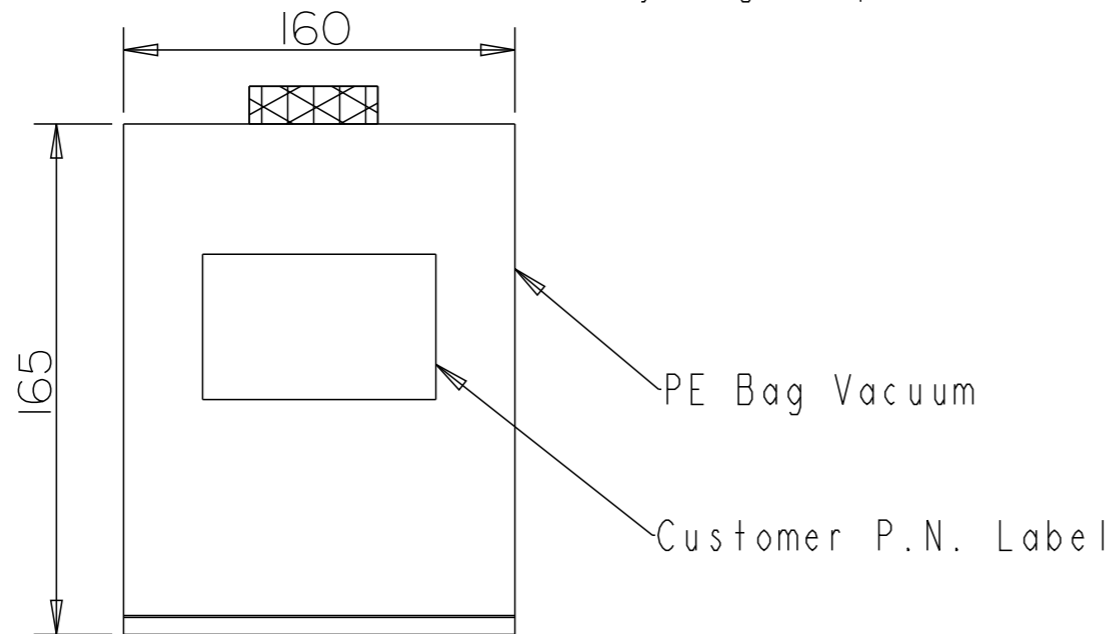
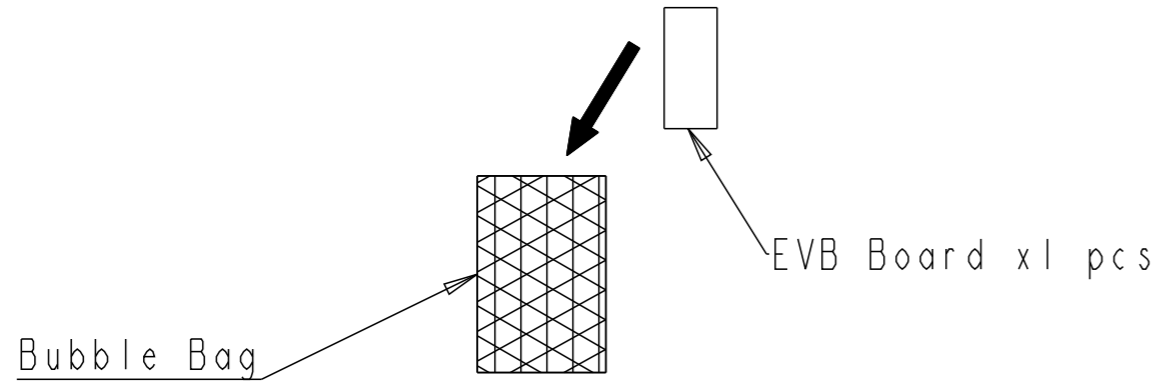


VACUUM IN BULK		L000951-80
PACKAGING		PART NUMBER
1	0402 CAPACITOR(0.3pF)	8
1	0402 CAPACITOR(0.9pF)	7
2	0402 CAPACITOR(0.8pF)	6
1	0402 CAPACITOR(1.8pF)	5
3	0402 RESISTOR(0OHM)	4
2	SMA FEMALE CONN.	3
1	EVB	2
1	ANTENNA	1
Q'TY (PC)	DESCRIPTION	ITEM

THIS DRAWING IS A CONTROLLED DOCUMENT.		DWN DW.PARK 28JUN2024	 TE Connectivity	NAME Chip Ant, GPS+DUAL Wi-Fi, 3.2x1.6mm
DIMENSIONS: mm		CHK SJ.NOH 28JUN2024		
TOLERANCES UNLESS OTHERWISE SPECIFIED:		APVD NG.WEITAT 28JUN2024		
0 PLC ±- 1 PLC ±- 2 PLC ±- 3 PLC ±- 4 PLC ±- ANGLES ±-		PRODUCT SPEC -		
MATERIAL -		APPLICATION SPEC -	SIZE A3	CAGE CODE 00779
FINISH -		WEIGHT -	DRAWING NO. C=L000951	RESTRICTED TO -
CUSTOMER DRAWING			SCALE 2:1	SHEET 3 OF 4
			REV A	

P	LTR	DESCRIPTION	DATE	DWN	APVD
		SEE SHEET 1			

PACKAGING SPECIFICATIONS FOR REFERENCE



1 PE Bag  
= 1 pc EVB Board

1 Carton  
= 60 PE Bags  
= 60 pcs EVB Board

\*Buffer Filling Of Product Packaging

THIS DRAWING IS A CONTROLLED DOCUMENT.		DWN DW.PARK 28JUN2024												
DIMENSIONS: mm		CHK SJ.NOH 28JUN2024												
TOLERANCES UNLESS OTHERWISE SPECIFIED:		APVD NG.WEITAT 28JUN2024												
<table border="0"> <tr><td>0 PLC</td><td>±-</td></tr> <tr><td>1 PLC</td><td>±-</td></tr> <tr><td>2 PLC</td><td>±-</td></tr> <tr><td>3 PLC</td><td>±-</td></tr> <tr><td>4 PLC</td><td>±-</td></tr> <tr><td>ANGLES</td><td>±-</td></tr> </table>		0 PLC			±-	1 PLC	±-	2 PLC	±-	3 PLC	±-	4 PLC	±-	ANGLES
0 PLC	±-													
1 PLC	±-													
2 PLC	±-													
3 PLC	±-													
4 PLC	±-													
ANGLES	±-													
MATERIAL -	FINISH -	APPLICATION SPEC -	NAME Chip Ant, GPS+DUAL Wi-Fi, 3.2x1.6mm											
		WEIGHT -	SIZE A3	CAGE CODE 00779	DRAWING NO C=L000951	RESTRICTED TO -								
		CUSTOMER DRAWING	SCALE 1:1	SHEET 4 OF 4	REV A									