



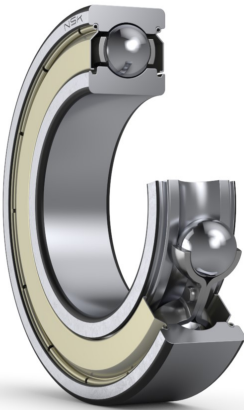
# PRODUCT DATASHEET

Datasheet creation date: 2025/07/08 2:29 (UTC)



## 6309ZZ

### Single-Row Deep Groove Ball Bearings



#### Boundary Dimensions

d	45	mm	Bore diameter
D	100	mm	Outside diameter
B	25	mm	Width
r (min.)	1.5	mm	Chamfer dimension

#### Basic Load Ratings

Cr	58500	N	Basic dynamic load rating
C0r	32000	N	Basic static load rating

#### Speeds

Grease	7500	min-1	Grease lubrication
--------	------	-------	--------------------

#### Abutment and Fillet Dimensions

da (min.)	53	mm	Diameter of shaft abutment
da (max.)	61.5	mm	Diameter of shaft abutment
Da (max.)	92	mm	Diameter of housing abutment
ra (max.)	1.5	mm	Radius of shaft or housing fillet

#### Calculation factors

fo	13.1		Factor
----	------	--	--------

#### Additional information

z	8		Number of Balls
Dw	17.462	mm	Ball Diameter

#### Mass

Mass approx.	0.829	kg	Mass approx.
--------------	-------	----	--------------

