



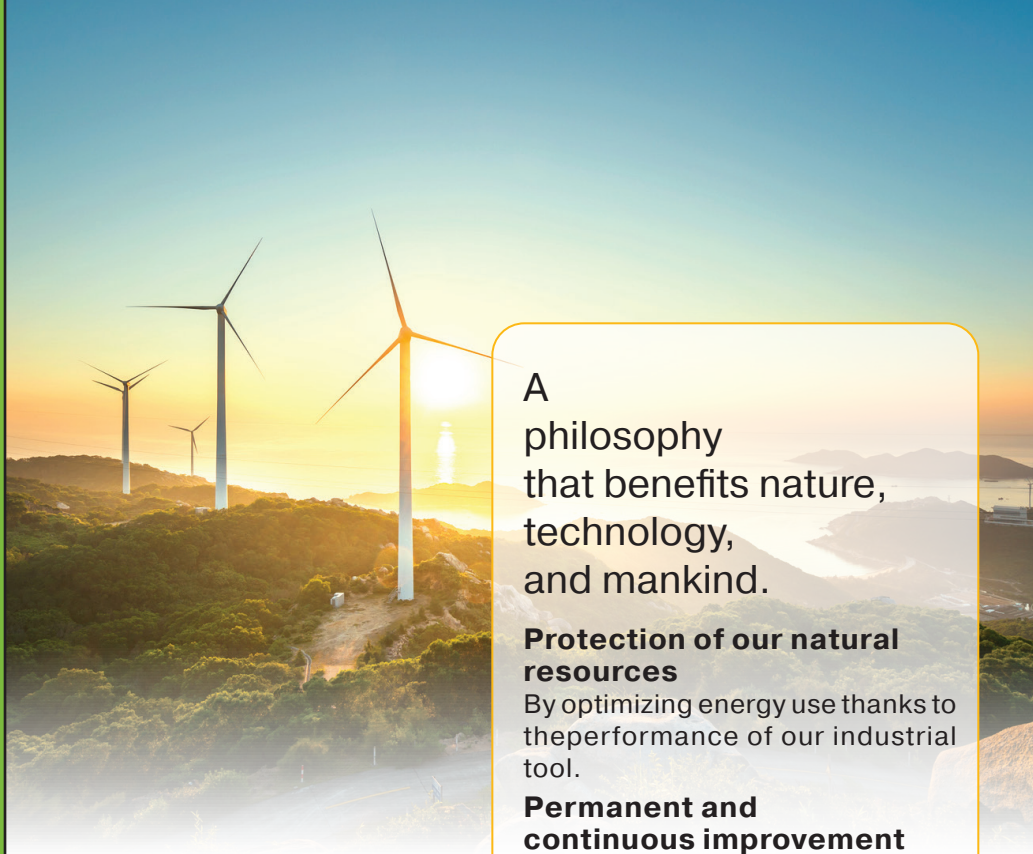
OUR ENVIRONMENTAL APPROACH

Legris Connection Solutions Low Pressure.



Parker Legris, Low Pressure Connectors Division Europe, a Division of Parker Hannifin structures its offer around the design, the development and the industrialization of a panel of connection solutions to enhance the productivity and profitability of its customers, while favouring better management of the environment.

The company philosophy is permanently and continuously orientated towards the preservation of natural resources and environment protection.



A philosophy that benefits nature, technology, and mankind.

Protection of our natural resources

By optimizing energy use thanks to the performance of our industrial tool.

Permanent and continuous improvement

By changing old habits and promoting new materials and concepts.

Asserting our values for environmental protection

By achieving ISO 14001 certification for all our sites to gather our employees around clear objectives in terms of environmental protection.

OUR COMMITMENT TO SUSTAINABLE DEVELOPMENT

Innovation

Parker Legris has placed eco-design at the heart of its innovation in order to develop products that are more compact, more efficient and easier to use, and whose environmental footprint is optimum.

Industrial Performances

Improve our production methods to reduce the quantities of material used and energy consumed ; reduce and re-use waste.

Security - Health Protection

Fulfill the legal and regulatory/administrative requirements with regards to safety on our production sites, so as to ensure maximum prevention of risk for all employees.

A Long-Lasting Relationship with our Customers

Develop partnerships with our customers and accompany them in their environmental approach.

4 ENVIRONMENTAL ACTIONS

- 1 Reduce the Impact of our Industrial Sites
- 2 Offer Environmentally Friendly Products
- 3 Anticipate Regulations
- 4 Design for the Environment



1 Reduce the Impact of our Industrial Sites

Parker Legris integrated the management of environmental protection into the running of its industrial sites and this step has allowed valorization for 85% of waste recycling and a 15% reduction in our energy consumption.

2 Offer Environmentally-Friendly Products

A product has an impact on its environment during its entire life cycle, from raw material extraction to treatment at the end of its life cycle.

Parker Legris takes an active approach to continuous improvement and ecologically sound manufacturing and relies on Product Life Cycle Analysis (PLCA) to optimise the environmental impact of its products.

The evaluation of these environmental impact is detailed in the 11 indicators below; they cover all types of pollution so as to guarantee the multicriteria reasoning: this limits the transfer of pollution from one step of the cycle to the other.

Lif Cycle Analysis

Aims to evaluate the environmental impact of a product during its different life cycle stages:

- Manufacturing,
- Distribution,
- Use,
- End of Life Cycle.



3 Offer Environmentally-Friendly Products

To Act for the Future

Parker Legris products are only indirectly affected by WEE, ROHS and REACH regulations. However, Parker Legris continually goes above and beyond its legal obligations, and endeavours to find the appropriate mix of materials, recycling channels and technical performance in order to facilitate the recycling of these products at the end of their life cycle.

Privilege Recycling

The materials contained in our products are listed in our catalogues and on the products themselves, which facilitates their recycling. All our products are packed in packaging made of recycled materials.



Parker Legris subscribes to the EcoFolio organisation and thereby contributes to paper reduction, re-use and recycling.

A global Approach

- Values of Excellence
- Security - Health protection
- Industrial performance
- ISO 14001 certification
- Everyday management of industrial hazards

4 Design for the Environment

Parker addresses sustainable product development through its “Simple by Design” technology simplification initiative, which reduces complexity and increases efficiency for the end user.

The result is a more cost-effective product that delivers better performance and better outcomes for customers in an efficient and sustainable way.

Simple by Design is aligned with Parker's Lean system, which incorporates the Kaizen concept of rapid improvement to help eliminate waste and improve productivity.



The five guiding principles

of Simple by Design™ promote speed and growth:

Design
with
innovative
thinkin

Design for the
environnement

Design to
reduce

Design to
reuse

Design to optimize
flow

ENVIRONMENTAL BENEFITS

1 Optimize your energy

2 Optimize your environmental impact

1 With Parker Legris : optimize your energy

Compressed air is a widely used industrial fluid. However, it is probably one of the most expensive energy fluids... The European industry's annual electricity consumption is estimated at 400 TWh* according to 3 main energy categories: Coolers, Compressed Air, others. Compressed Air represents up to **40% of the consumed electricity**. In an average installation : 70% of the generated **compressed** air is used in air blowing and exhaust applications, 10% in the working process, and the **remaining 20% are lost in leaks**. **Considering that - on average - a 30% energy saving can be attained when using high-performance compressed air systems**, electrical energy savings, in Europe in compressed air systems, would total more than 2 billion euros !

We have solutions to save energy on compressed air equipment and products to help you reduce your energy consumption, saving you money while optimizing the efficiency of your equipments. By taking into account the most demanding design criteria (ISO 14743), controlling 100% of our products and offering you the best know-how in terms of service, we now offer LF 3000 fittings with the lowest leak rate of the market : 0,02 NI/h up to 20 bar working pressure and a safety factor = 4.



Using our fittings:
means **49% of energy saved, or 200% within 5 years****

* source ADEME

** Protocol simulating five years of operation : cycle level of -20°C to +80°C under 7 bar for 500h and measurement of vacuum capability and extent of resistance to pressure test.



2 With Parker Legris : Optimize your Environmental Impact

The comparative LCA offers a true alternative in terms of environmental differentiation and valorization.

Comparative LCA :

We carried out a comparative Life Cycle Analysis on the market of drinking water between 3 Parker Legris fittings and the standard products on the market.

The Parker Legris products have the lowest environmental footprint of the market emitting on average five times less CO₂ over their lifecycle than the market standard.

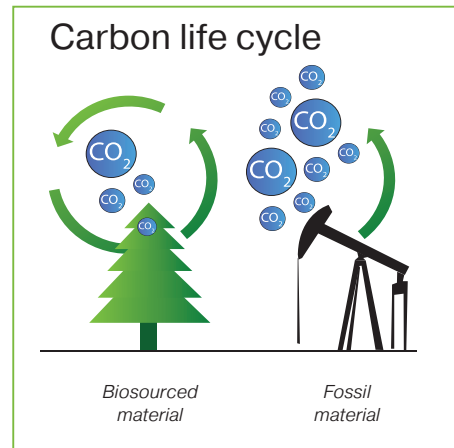
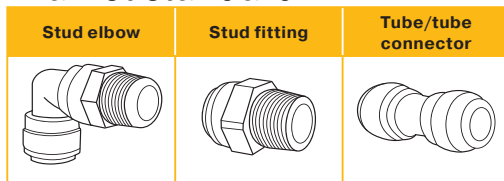
Context of the study :

This summary relies on ISO 14020, ISO 14025 and IEC PAS 62545 standards related to the general principles of environmental regulations. The results are presented in a report approved by an ethics committee (ADEME and Bureau Veritas organizations).

LIQUIfit™

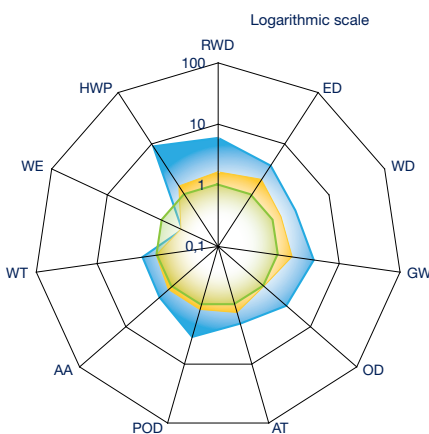


Market standard

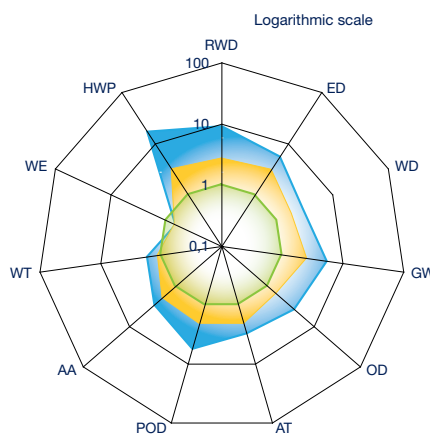


Parker Legris products are **compact**, consume little energy and are made of **biosourced materials** made of more than 70% bio-based material, with no bisphenol or phthalates.

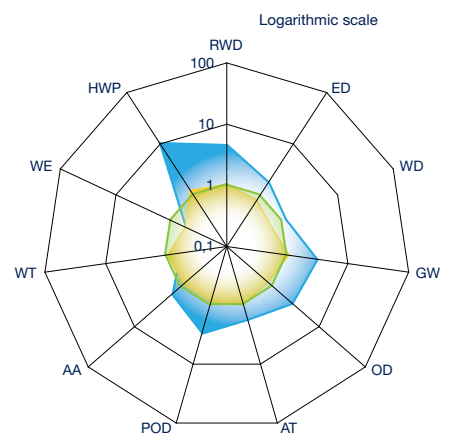
STUD ELBOW



TUBE/TUBE CONNECTOR



STUD FITTING



RWD : Raw Material Depletion
 ED : Energy Depletion
 WD : Water Depletion
 GW : Global Warming

OZ : Ozone Depletion
 AT : Air Toxicity
 POC : Photochemical Ozone Creation

AA : Air Acidification
 WT : Water Toxicity
 WE : Water Eutrophication
 HWP : Hazardous Waste Production

LIQUIFIT® OFFER OVERVIEW

A Single Product Range for all Liquid Applications

Polymer Stud Fittings

Straight



Elbows



Tees



Plugs



Tube-to-Tube Fittings

Straight

6306



Elbow

6302



Tee

6304



Y

6340



Cross

6307



Bulkhead Connector

Straight

6316



Plug-In Fittings

Elbows

6382



6380



Tees

6383



6388



Accessories

Plug-in

6366



6368



6326



6322



6351



Stud Fittings with Stainless steel adaptors

Elbows

6959



6989



6979



Stud Fittings with Nickel-Plated Brass Adaptors

Elbows

6999



6909



Stud Fittings in Stainless Steel

Straight

6911



6975



6974



Stud Fittings in Nickel-Plated Brass

Straight

6901



6905



6976



Cartridges

Carstick®

6300



Carstick+

6300



Flexible Calibrated Tubing

Advanced PE



1015Y..F
1030Y..F
1075Y..F
1096Y..F
1098Y..F

Discover the LIQUIfit® brochure



LIQUIfit® Related Products

3130



3110



0605



3000 71 00



LIQUIfit® Non-Return Valves

Non-Return Valves

7992



LIQUIfit® Ball Valves

In-Line

4020



4021



4023



Right-Angled

4022



4024



