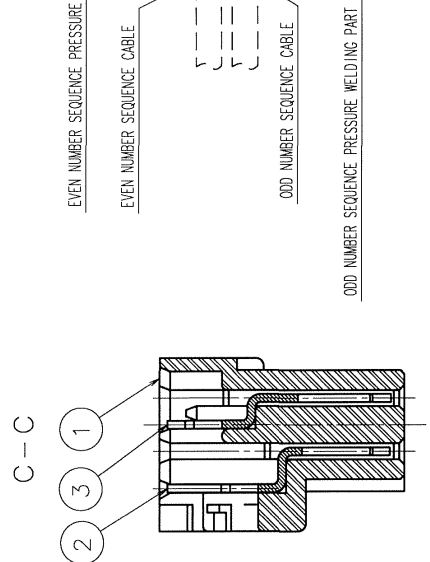
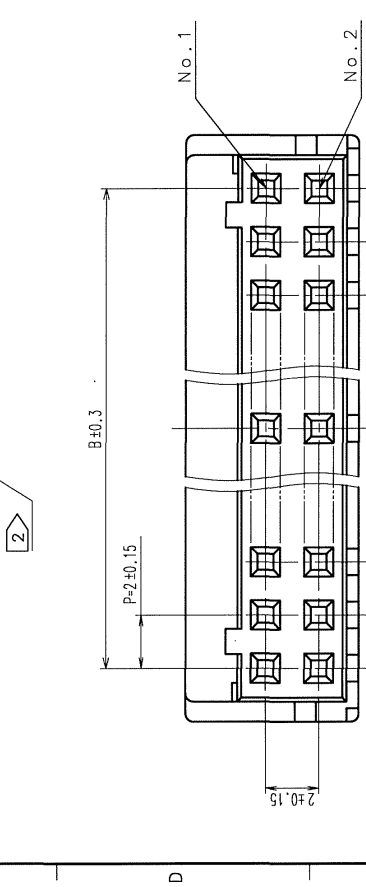
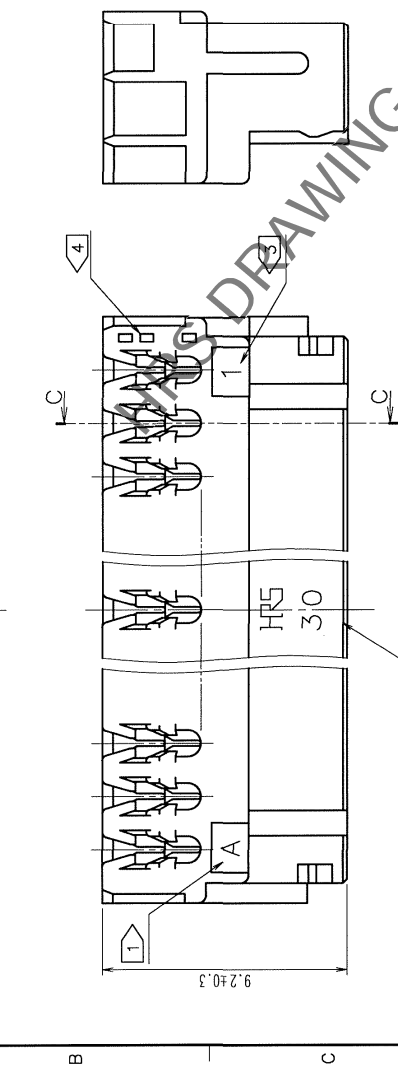
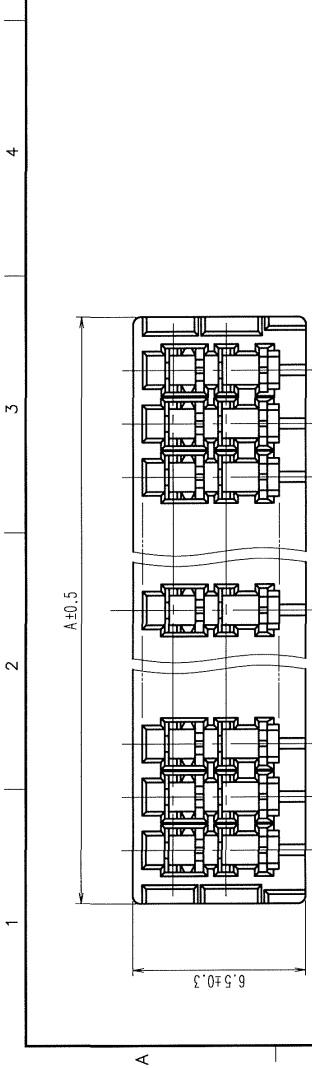


NO.	DESCRIPTION OF REVISIONS	BY	CHKD	DATE	COUNT	DESCRIPTION OF REVISIONS	BY	CHKD	DATE
1									
2									
3									
4									
5									
6									
7									
8									

CABLE JOINT DIAGRAM



HRS NO.	PART NO.	A	B
CL543-0652-0-05	DF11-4DS-2R26(05)	6	2
CL543-0653-3-05	DF11-6DS-2R26(05)	8	4
CL543-0654-6-05	DF11-8DS-2R26(05)	10	6
CL543-0655-9-05	DF11-10DS-2R26(05)	12	8
CL543-0656-1-05	DF11-12DS-2R26(05)	14	10
CL543-0657-4-05	DF11-14DS-2R26(05)	16	12
CL543-0658-7-05	DF11-16DS-2R26(05)	18	14
CL543-0659-0-05	DF11-18DS-2R26(05)	20	16
CL543-0660-9-05	DF11-20DS-2R26(05)	22	18
CL543-0661-1-05	DF11-22DS-2R26(05)	24	20
CL543-0662-4-05	DF11-24DS-2R26(05)	26	22
CL543-0663-7-05	DF11-26DS-2R26(05)	28	24
CL543-0664-0-05	DF11-28DS-2R26(05)	30	26
CL543-0665-2-05	DF11-30DS-2R26(05)	32	28
CL543-0666-5-05	DF11-32DS-2R26(05)	34	30



NO.	MATERIAL	FINISH, REMARKS	NO.	PHOSPHOR BRONZE	SURFACE: TIN PLATED $1\mu\text{m min}$ UNDER PLATING: NICKEL PLATED $0.5\mu\text{m min}$
2	PHOSPHOR BRONZE		3	PHOSPHOR BRONZE	SURFACE: TIN PLATED $1\mu\text{m min}$ UNDER PLATING: NICKEL PLATED $0.5\mu\text{m min}$
1	POLYAMIDE	UL94V-0, BLACK			

CODE NO. (OLD)	DRAWN	CHECKED	APPROVED	FINISH, REMARKS
	A. Miura			
	'06.02.22 T. Nishida '06.03.08 '06.03.10			

SUFFIX	WIRE	WIRE CONSTRUCTION	OUTER DIAMETER OF INSULATION
R26	UL1061 AWG26	7/0.16	0.95 TO 1.05

- NOTES
- 1 DIE CAVITY No.
 - 2 NUMBER OF CONTACT.
 - 3 AT CONTACT No. 1 SIDE.
 - 4 ONE SQUARE HOLE IN LOW ROW MEANS ODD NUMBER SIDE AND TWO SQUARE HOLES IN UPPER LOW EVEN NUMBER OF CONTACT No. RESPECTIVELY.

DRAWING NO.	PART NO.	DF11-*	DS-2R26(05)
EDC3-071615-01			
SCALE 5 : 1			
UNITS mm			
HIROSE ELECTRIC CO., LTD.			
	CL543		