

**Characteristics / Ordering Code**

Pilot operated pressure relief valves series ZDV are designed for maximum flow rates.

The relief function can be located between P and T, A and T, B and T or A and T + B and T for typical pressure relief functions.

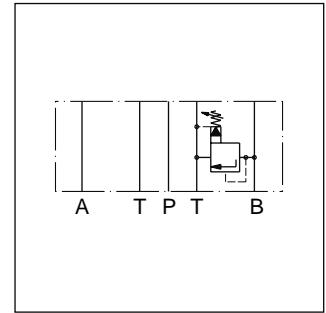
For a pre-charge function the ZDV can be ordered with pressure function between A and B + B and A.

**Features**

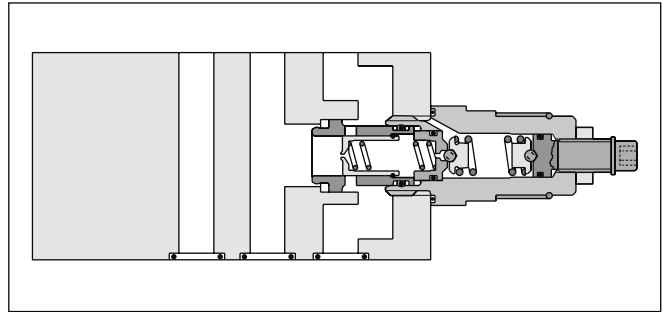
- High flow capacity
- Pressure function in P, A, B or A + B
- Sizes  
ZDV01 - NG06 (CETOP 03)  
ZDV02 - NG10 (CETOP 05)



ZDV-P01



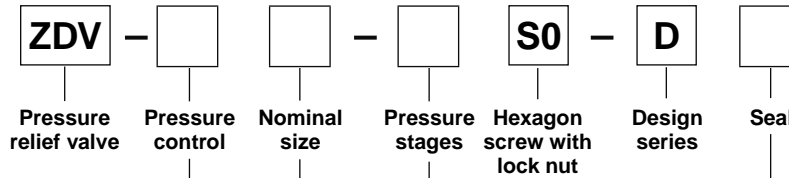
ZDV-B02



ZDV-B02

**Ordering code**

7



Code	Size	Pressure control
P	NG06/10	P - T
A	NG06/10	A - T
B	NG06/10	B - T
AB	NG06/10	A - T & B - T
ABS	NG06/10	A - B & B - A

Code	Nominal size
01	NG06
02	NG10

Code	Seal
1	NBR
5	FPM

Code	Pressure stages
1	up to 70 bar
5 <sup>1)</sup>	up to 350 bar

Ordering code details see end of chapter.

<sup>1)</sup> Code ABS and size 10 up to 315 bar.

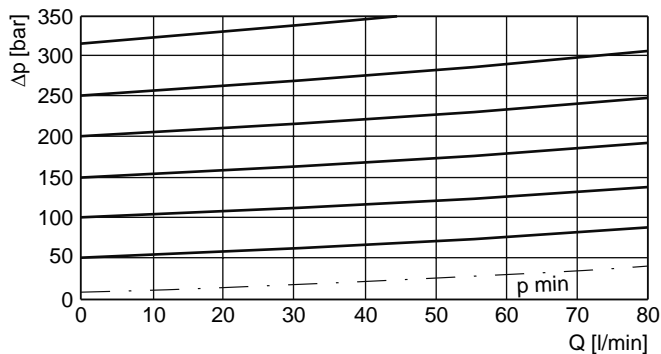
Technical Data / Characteristic Curves

Technical data

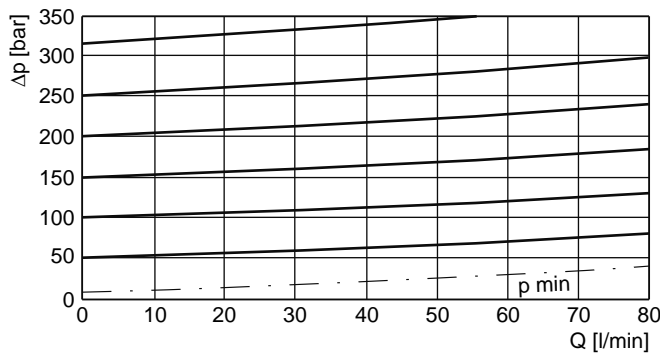
General			NG06	NG10
Size				
Mounting interface			DIN 24340 A6 ISO 4401 NFPA D03	DIN 24340 A10 ISO 4401 NFPA D05
			CETOP RP 121	
Mounting position			unrestricted	
Ambient temperature	[°C]		-20...+60	
MTTF <sub>D</sub> value	[years]		150	
Weight		[kg]	1.6	3.0
	1 cartridge			
	2 cartridges	[kg]	2.5	3.7
Hydraulic				
Max. operating pressure	[bar]		350 (ZDV-ABS 315)	315
Nominal flow	[l/min]		80	140
Fluid			Hydraulic oil according to DIN 51524	
Fluid temperature	[°C]		-20...+70 (NBR: -25...+70)	
Viscosity	permitted	[cSt] / [mm <sup>2</sup> /s]	20 ... 400	
	recommended	[cSt] / [mm <sup>2</sup> /s]	30 ... 80	
Filtration			ISO 4406 (1999); 18/16/13	

p/Q performance curves

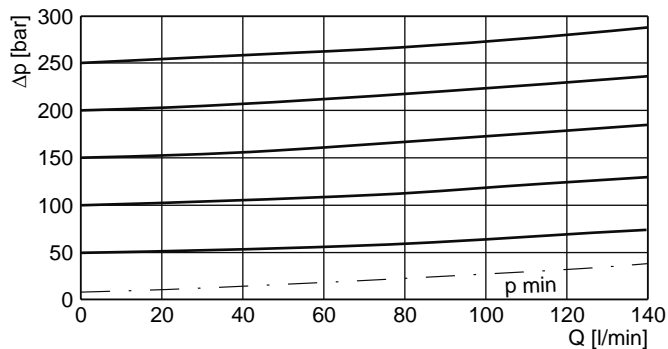
ZDV-P/A/B/ABS01



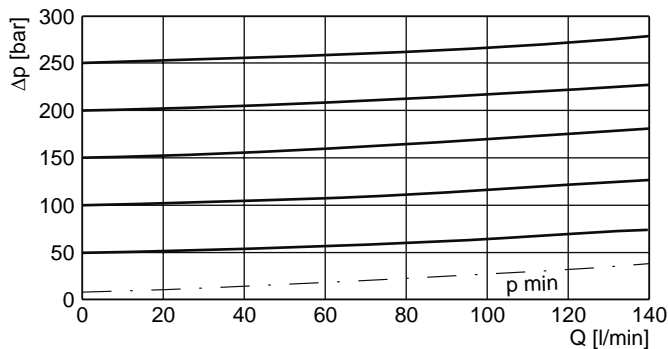
ZDV-AB01



ZDV-P/A/B/AB02



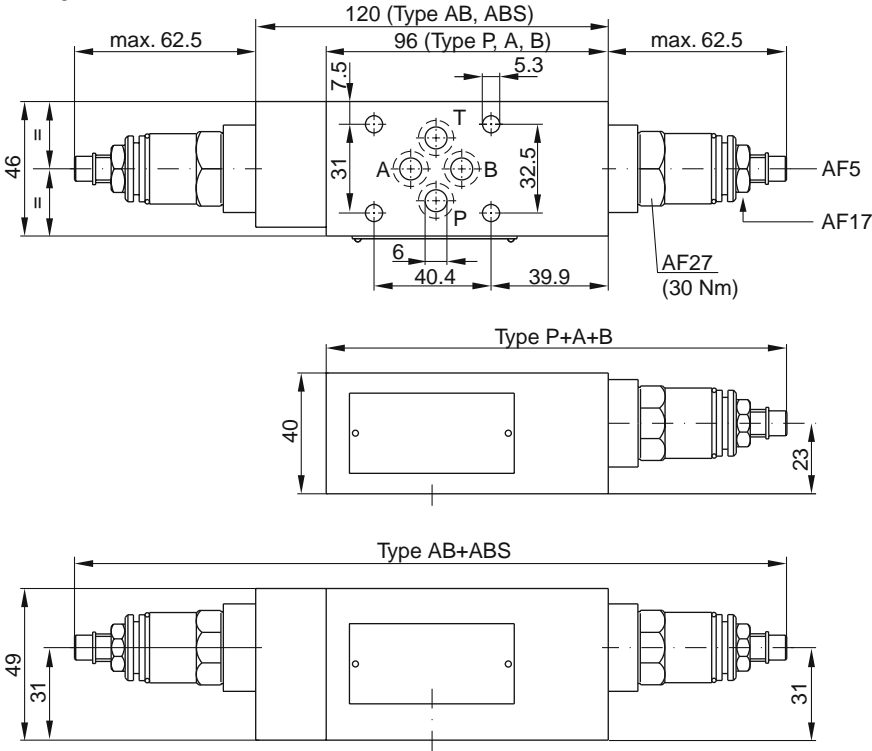
ZDV-ABS02



All characteristic curves measured with HLP46 at 50 °C.

Dimensions

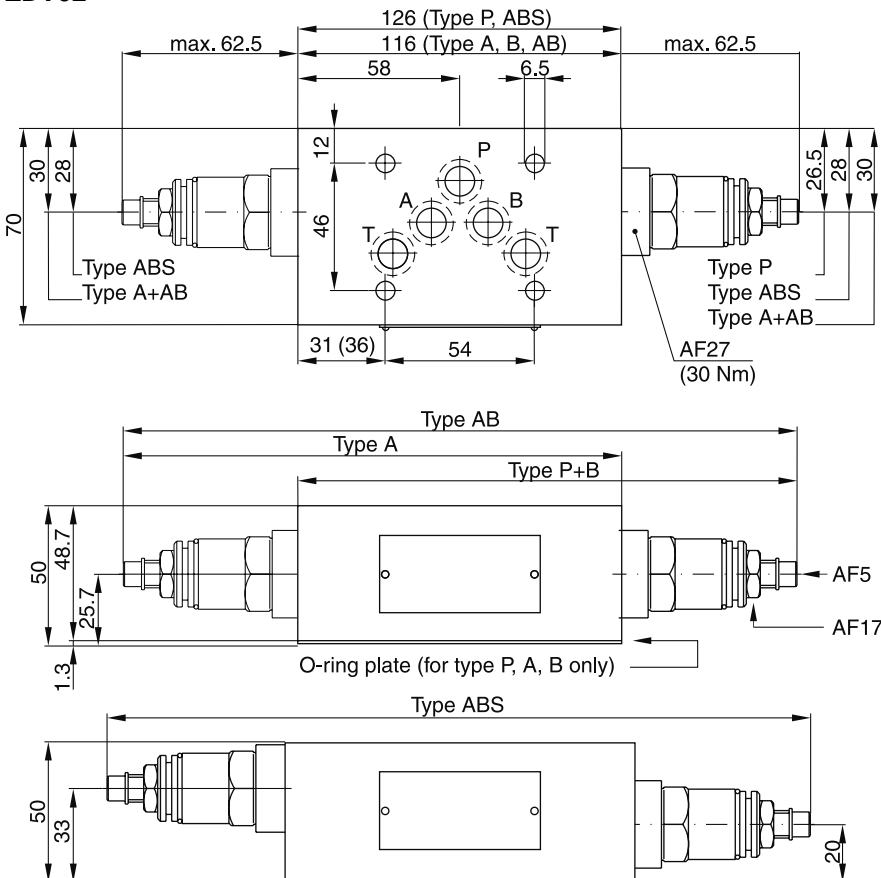
ZDV01



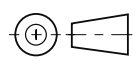
Seal kit	
Seal	Order code
1	098-91182-0
5	098-91183-0
Complete cartridge	
Pressure stage	Order code
1	098-91116-0
5	098-91117-0

7

ZDV02

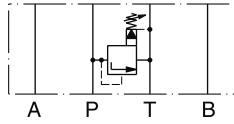


Seal kit	
Seal	Order code
1	098-91076-0
5	098-91077-0
Complete cartridge	
Pressure stage	Order code
1	098-91116-0
5	098-91117-0



**ZDV01**

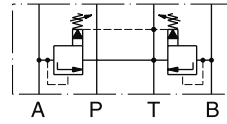
Pressure control P-T



Series  
ZDV-P01-1-S0-D1  
ZDV-P01-5-S0-D1

Order No.  
098-91201-0  
098-91202-0

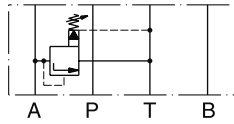
Pressure control A-T & B-T



Series  
ZDV-AB01-1-S0-D1  
ZDV-AB01-5-S0-D1

Order No.  
098-91207-0  
098-91208-0

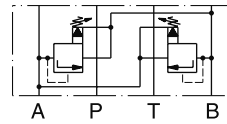
Pressure control A-T



Series  
ZDV-A01-1-S0-D1  
ZDV-A01-5-S0-D1

Order No.  
098-91203-0  
098-91204-0

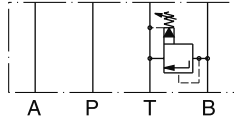
Pressure control A-B & B-A



Series  
ZDV-ABS01-1-S0-D1  
ZDV-ABS01-5-S0-D1

Order No.  
098-91209-0  
098-91210-0

Pressure control B-T

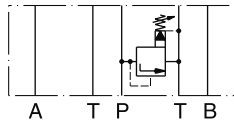


Series  
ZDV-B01-1-S0-D1  
ZDV-B01-5-S0-D1

Order No.  
098-91205-0  
098-91206-0

**ZDV02**

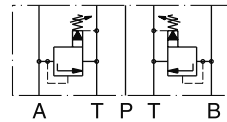
Pressure control P-T



Series  
ZDV-P02-1-S0-D1  
ZDV-P02-5-S0-D1

Order No.  
098-91034-0  
098-91035-0

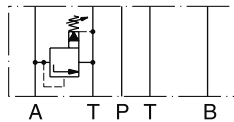
Pressure control A-T & B-T



Series  
ZDV-AB02-1-S0-D1  
ZDV-AB02-5-S0-D1

Order No.  
098-91040-0  
098-91041-0

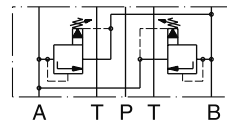
Pressure control A-T



Series  
ZDV-A02-1-S0-D1  
ZDV-A02-5-S0-D1

Order No.  
098-91036-0  
098-91037-0

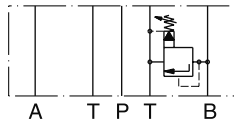
Pressure control A-B & B-A



Series  
ZDV-ABS02-1-S0-D1  
ZDV-ABS02-5-S0-D1

Order No.  
098-91042-0  
098-91043-0

Pressure control B-T



Series  
ZDV-B02-1-S0-D1  
ZDV-B02-5-S0-D1

Order No.  
098-91038-0  
098-91039-0

