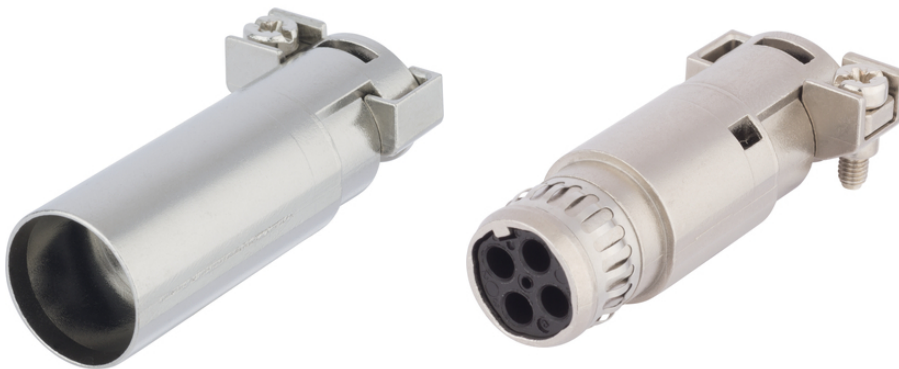


EPIC® MH Bus PIN 1x(4) contact holder

High flexibility by the use of any combination of inserts in one connector

Info

Modular connector system, plugable with the market standard
Shielded modul for data and signal transmission.
Usable for Ethernet CAT.5e



Wind Energy



Rail



Mechanical and plant engineering



Kompletterande automationskomponenter från Lapp

Benefits

Shielded modul for data and signal transmission.

Usable for Ethernet CAT.5e

EPIC® MH system is mateable with the market standard

Crimp connection for permanent vibration proof contact

The mix of different functions in one plug guarantees high flexibility

Railway applications

- Fire protection on railway vehicles: Test according EN 45545-2. Requirement sets R22 and R23. Hazard level HL1, HL2 and HL3

Application range

Mechanical engineering

Robotics industry

Plant engineering

Last Update (20.11.2018)

©2018 Lapp Group - Technical changes reserved

Product Management www.lappkabel.de

You can find the current technical data in the corresponding data sheet.

PN 0456 / 02_03.16

EPIC® MH Bus PIN 1x(4) contact holder

Renewable energy
Railway applications / vehicle construction

Technical Data

Classification ETIM 5:	ETIM 5.0 Class-ID: EC002641 ETIM 5.0 Class-Description: Modular connector (industrial connector)
Classification ETIM 6:	ETIM 6.0 Class-ID: EC002641 ETIM 6.0 Class-Description: Modular connector (industrial connector)
Rated voltage (V):	50
Rated impulse voltage:	0,8 kV
Rated current (A):	10
Pollution degree:	3
Flammability:	UL94 V-0
Number of contacts:	4
Termination methods:	Crimp termination: 0.14 - 2.5 mm ²
Material:	PA
Cycle of mechanical operation:	500
Certifications:	UL-tested: UL File Number: E75770
Temperature range:	-40°C to +125°C

Note

Photographs and graphics are not to scale and do not represent detailed images of the respective products.
Prices are net prices without VAT and surcharges. Sale to business customers only.

EPIC® MH Bus PIN 1x(4) contact holder

Article number	Article description	Contact type	Number of operating contacts
EPIC® MH BUS PIN 1x(4) contact holder			
44423229	EPIC® MHS Bus PIN 1x(4) CM	male	4 + shield
44423231	EPIC® MHB Bus PIN 1x(4) CM	female	4 + shield

Last Update (20.11.2018)

©2018 Lapp Group - Technical changes reserved

Product Management www.lappkabel.de

You can find the current technical data in the corresponding data sheet.
PN 0456 / 02_03.16