



iglidur® Flange Bearings



Standard range from stock

Very good wear resistance

Maintenance-free

Materials: iglidur® G, iglidur® A180, iglidur® J and iglidur® X

Light weight

iglidur® Flange Bearings

Maintenance-free. With this design it is possible to use iglidur® high performance plain bearings in locations where recommended housing bore tolerances are not possible.



Very good
wear resistance

Maintenance-free

Material: iglidur® G,
iglidur® A180,
iglidur® J and iglidur® X

Light weight



When to use it?

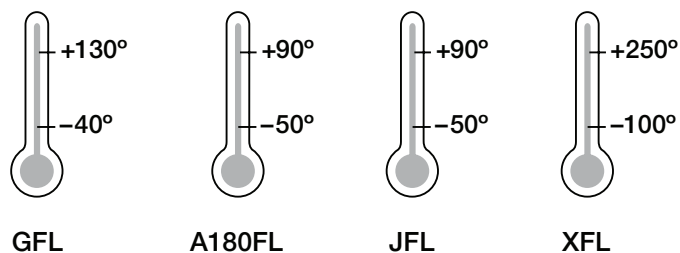
- When a screw flanged bearing is required
- When a clip bearing solution is not satisfactory
- When there is a housing with very wide tolerances
- When the tight fit of a press-fit bearing is not sufficient as axial securing



When not to use it?

- When an additional angular compensation is required
 - ▶ igubal® Flange bearings, page 777
- When a screw connection is not possible
 - ▶ iglidur® Clip bearings, page 625
- When a large guide length is necessary
 - ▶ iglidur® G, page 81

Temperature



Product range

1 style
Ø 10–35 mm
more dimensions
on request



iglidur® Flange Bearings | Technical Data

General Properties

With this design it is possible to use iglidur® high performance plain bearings in locations where the recommended housing bore tolerances are not possible.

Due to the design of the bearing, high loads are possible although there is a minimal precision requirement of the housing. iglidur® maintenance-free flange bearings are made of iglidur® G, iglidur® J, iglidur® X or iglidur® A180. In this way, all the advantages of the iglidur® high performance polymers can be used, e.g. universal bearings, bearings with high wear-resistance or high temperature-resistance (up to +250 °C) or FDA-compliance.

Installation

Depending on the requirements, different mounting types can be considered. For low radial loads, it is sufficient to mount iglidur® flange bearings on one surface simply with two bolts. For higher radial loads, it is advisable to support the iglidur® flange bearing in a bore on the reinforced side facing the direction of the load. For this bore, large tolerances are permitted, since it serves only as additional support for the iglidur® flange bearing. In order to achieve higher radial loads in the bearings, the iglidur® flange bearing can be pressfit into a recommended housing bore with H7 tolerances. The additional bolts ensure the fit of the bearing in the housing.

For the fitting of the iglidur® maintenance-free flange bearing, no special materials or tools are necessary.



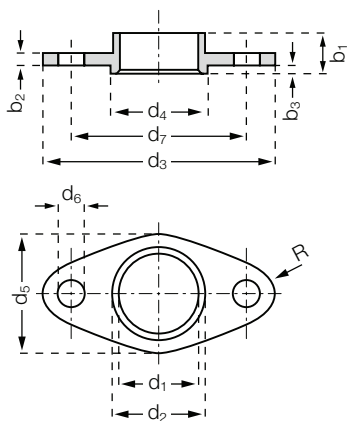
Material data for available materials:

- iglidur® G ► page 81
- iglidur® A180 ► page 411
- iglidur® J ► page 109
- iglidur® X ► page 173



The installation of iglidur® flange bearing: simple and secure

Flange bearings



Order key

GFL-10



Inner diameter d1
Flange Bearings
Material

Dimensions [mm]

Part number	d1	d1-Tolerance*	d2**	d3	d4	d5	d6	d7	b1	b2	b3	R (±0.2)
GFL-10	10	+0.025 +0.083	12	30	14	15	4.5	22	6	2	1	4
GFL-12	12	+0.032 +0.102	14	36	16	18	4.5	26	6	2	1	4.5
GFL-14	14	+0.032 +0.102	16	42	18	21	5.5	30	6	2	1	5
GFL-16	16	+0.032 +0.102	18	48	20	24	5.5	34	6	2	1	5.5
GFL-18	18	+0.032 +0.102	20	54	22	27	6.5	39	6	2	1	7
GFL-20	20	+0.040 +0.124	23	60	26	30	6.5	44	10	3	2	7
GFL-25	25	+0.040 +0.124	28	75	30	35	6.5	55	10	3	2	8.5
GFL-30	30	+0.040 +0.124	34	90	36	40	8.5	66	10	3	2	10
GFL-35	35	+0.050 +0.150	39	95	41	55	8.5	77	10	3	2	12
A180FL-10	10	+0.025 +0.083	12	30	14	15	4.5	22	6	2	1	4
A180FL-12	12	+0.032 +0.102	14	36	16	18	4.5	26	6	2	1	4.5
A180FL-16	16	+0.032 +0.102	18	48	20	24	5.5	34	6	2	1	5.5
A180FL-20	20	+0.040 +0.124	23	60	26	30	6.5	44	10	3	2	7
A180FL-25	25	+0.040 +0.124	28	75	30	35	6.5	55	10	3	2	8.5
A180FL-30	30	+0.040 +0.124	34	90	36	40	8.5	66	10	3	2	10
A180FL-35	35	+0.050 +0.150	39	95	41	55	8.5	77	10	3	2	12
JFL-10	10	+0.025 +0.083	12	30	14	15	4.5	22	6	2	1	4
JFL-12	12	+0.032 +0.102	14	36	16	18	4.5	26	6	2	1	4.5
JFL-14	14	+0.032 +0.102	16	42	18	21	5.5	30	6	2	1	5
JFL-16	16	+0.032 +0.102	18	48	20	24	5.5	34	6	2	1	5.5
JFL-20	20	+0.040 +0.124	23	60	26	30	6.5	44	10	3	2	7
JFL-25	25	+0.040 +0.124	28	75	30	35	6.5	55	10	3	2	8.5
JFL-30	30	+0.040 +0.124	34	90	36	40	8.5	66	10	3	2	10
JFL-35	35	+0.050 +0.150	39	95	41	55	8.5	77	10	3	2	12
XFL-10	10	+0.013 +0.071	12	30	14	15	4.5	22	6	2	1	4
XFL-12	12	+0.016 +0.086	14	36	16	18	4.5	26	6	2	1	4.5
XFL-14	14	+0.016 +0.086	16	42	18	21	5.5	30	6	2	1	5
XFL-16	16	+0.016 +0.086	18	48	20	24	5.5	34	6	2	1	5.5
XFL-20	20	+0.020 +0.104	23	60	26	30	6.5	44	10	3	2	7
XFL-25	25	+0.020 +0.104	28	75	30	35	6.5	55	10	3	2	8.5
XFL-30	30	+0.020 +0.104	34	90	36	40	8.5	66	10	3	2	10
XFL-35	35	+0.025 +0.125	39	95	41	55	8.5	77	10	3	2	12

* after pressfit. Testing methods ► page 75 ** Pressfit in H7 tolerance housing bore



delivery from stock
time



prices price list online
www.igus.eu/iglidur-flange