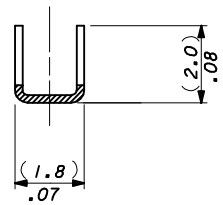
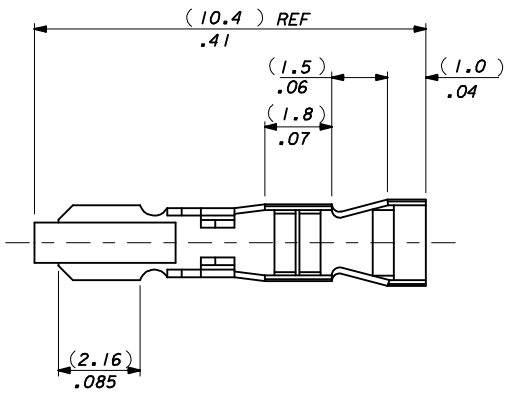


NOTES:

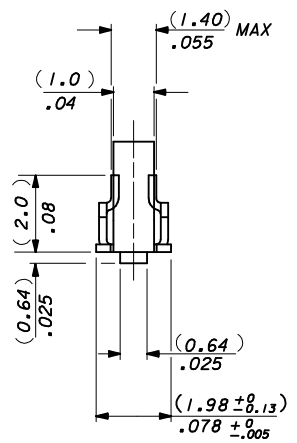
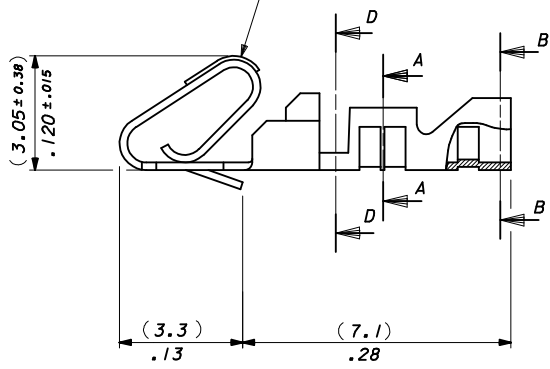
1. MATERIAL: (0.21)/.008 THICK BRASS.
2. FINISH: SEE SHEET 2.
3. THIS PART CONFORMS TO PRODUCT SPEC. 99020-0088.
4. TERMINAL MUST MEET BEND SPEC. SDES-219.
5. SUITABLE FOR 22-30 GA. WIRE, (1.57)/.062 MAX. INSULATION.
6. THIS PART CONFORMS TO CLASS B REQUIREMENTS OF COSMETIC SPECIFICATION PS-45499-002.



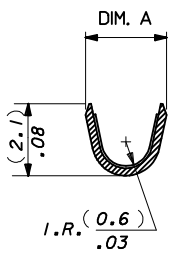
SECTION D-D  
(4809-1T ONLY)



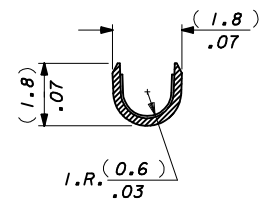
SELECTIVE PLATING AREA,  
SEE CHART



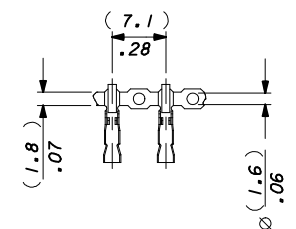
SECTION B-B



SECTION A-A



SECTION A-A



CARRIER STRIP DETAIL  
SCALE 2:1

4809-(\*)\*\* \*

- BLANK : DIM. A = (2.1) / 1.083 REF.
- M: DIM A = (2.2) / .087 REF.
- BLANK=CHAIN FORM TOP FEEDING REEL
- L=LOOSE FORM

PLATING CODE

|   |  |             |                 |                                       |      |                 |            |              |              |                        |
|---|--|-------------|-----------------|---------------------------------------|------|-----------------|------------|--------------|--------------|------------------------|
| SELECT GOLD AREA<br>EC NO: UCP2013-5411<br>DRAWN: KIPPER<br>CHKD: J.BELL<br>APPR: F.S.MITH                                    | 2013/06/14<br>2013/06/17<br>2013/06/28 | DESCRIPTION | QUALITY SYMBOLS | GENERAL TOLERANCES (UNLESS SPECIFIED) |      | DIMENSION STYLE |            | SCALE        | DESIGN UNITS | THIRD ANGLE PROJECTION |
|   |  |             |                 | mm                                    | INCH | MM/IN           | 10:1       | METRIC       |              |                        |
| AN  | REV                                    | DESCRIPTION | QUALITY SYMBOLS | 4 PLACES ± --- ± ---                  |      | DRAWN BY        | DATE       | TITLE        |              |                        |
|   |  |             |                 | 3 PLACES ± --- ± .010                 |      | MCC             | 1986/07/30 |              |              |                        |
|   |  |             |                 | 2 PLACES ± 0.25 ± .014                |      | CHECKED BY      | DATE       |              |              |                        |
|   |  |             |                 | 1 PLACE ± 0.35 ± ---                  |      | DMORIARTY       | 2004/10/18 |              |              |                        |
|   |  |             |                 | 0 PLACE ± ±                           |      | APPROVED BY     | DATE       |              |              |                        |
|   |  |             |                 | ANGULAR ± --- °                       |      | MATERIAL NO.    |            | DOCUMENT NO. |              | SHEET NO.              |
| DRAFT WHERE APPLICABLE MUST REMAIN WITHIN DIMENSIONS  |  |             |                 | SEE CHART                             |      | SD-4809-*       |            | 1 OF 2       |              |                        |
| THIS DRAWING CONTAINS INFORMATION THAT IS PROPRIETARY TO MOLEX INCORPORATED AND SHOULD NOT BE USED WITHOUT WRITTEN PERMISSION |  |             |                 |                                       |      |                 |            |              |              |                        |

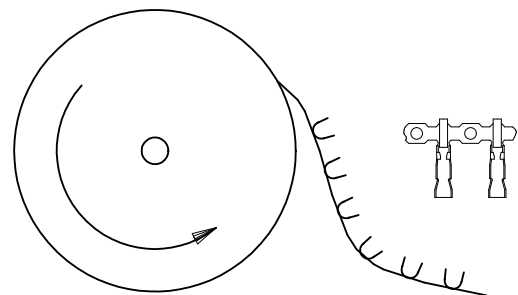
**FINISH NOTES\***

(550) GOLD PLATE (0.00038)/.000015 MIN. OVER (0.00076)/.000030 MIN. NICKEL

IN CONTACT AREA WITH (0.00005)/.000002 MIN. GOLD FLASH OVERALL.

(555) SELECTIVE GOLD (0.00038)/.000015 MIN. OVER (0.00076)/.000030 MIN. NICKEL IN CONTACT AREA ONLY.

(P918) HOT TIN DIP (0.00102-0.00305)/.000040-.000120



TERMINALS FEEDING FROM THE TOP OF THE REEL ARE STANDARD WOUND

|                        |                 |       |        |                               |
|------------------------|-----------------|-------|--------|-------------------------------|
| 08-55-0110             | 4809-(555)      | CHAIN | (555)  | (2.45 - 1.75)/<br>.096 - .069 |
| 08-55-0111             | ↑ -(555)L       | LOOSE |        |                               |
| 08-56-0120             | -(550)          | CHAIN | (550)  | (2.45 - 1.75)/<br>.096 - .069 |
| 08-56-0115             | ↓ -(550)L       | LOOSE |        |                               |
| 08-50-0135             | ↓ -(P918)       | CHAIN | (P918) | (2.45 - 1.75)/<br>.096 - .069 |
| 08-50-0136             | 4809 - (P918) L | LOOSE |        |                               |
| PART No                | ENG No          | FORM  | FINISH | DIM . A                       |
| TOP FEEDING REELS ONLY |                 |       |        |                               |

|  |  |                                       |   |  |              |                        |
|--|--|---------------------------------------|---|--|--------------|------------------------|
| CORRECT PLATING<br>EC NO: UCP2011-2131<br>DRWNCSTEWART 2011/01/18<br>CHKD:HKIPPER 2011/01/26<br>APPR:FSMLTH 2011/02/04 | QUALITY SYMBOLS                                      | GENERAL TOLERANCES (UNLESS SPECIFIED) | DIMENSION STYLE   | SCALE  | DESIGN UNITS | THIRD ANGLE PROJECTION |
|  | ▽=0  | mm INCH                               | MM/IN   | NTS  | METRIC       |                        |
|  | ▽=0  | 4 PLACES ± --- ± ---                  | DRAWN BY DATE   | TITLE  |              |                        |
|  | ▽=0  | 3 PLACES ± --- ± .010                 | MCC 1986/07/30  | ANTI-FISH HOOKING<br>TERMINAL KK,(2.50)/.100 |              |                        |
|  | 2 PLACES ± 0.25 ± .014                               | CHECKED BY DATE                       | MOLEX INCORPORATED  |  |              |                        |
|  | 1 PLACE ± 0.35 ± ---                                 | DMORIART 2004/10/18                   | SD-4809-*   |  |              |                        |
|  | ANGULAR ± ---°                                       | APPROVED BY DATE                      | SHEET NO. 2 OF 2  |  |              |                        |
|  |  | JDENNEHY 2004/10/19                   | DOCUMENT NO.  |  |              |                        |
|  | DRAFT WHERE APPLICABLE MUST REMAIN WITHIN DIMENSIONS | MATERIAL NO.                          | THIS DRAWING CONTAINS INFORMATION THAT IS PROPRIETARY TO MOLEX INCORPORATED AND SHOULD NOT BE USED WITHOUT WRITTEN PERMISSION |  |              |                        |
| AM   |  | SEE CHART                             |   |  |              |                        |