

Panel feed-through - SACC-DSIV-FSB-5CON-L180 SCO - 1542606


Please be informed that the data shown in this PDF Document is generated from our Online Catalog. Please find the complete data in the user's documentation. Our General Terms of Use for Downloads are valid (<http://phoenixcontact.com/download>)



Sensor/actuator flush-type socket, 5-pos., M12 SPEEDCON, B-coded, rear/screw mounting with M12 thread, with polarity protection, with straight solder connection



Key commercial data

| | |
|--------------------------------------|---|
| Packing unit | 10 pc |
| Minimum order quantity | 10 pc |
| GTIN |  4 046356 097871 |
| Weight per Piece (excluding packing) | 10.3 g |
| Custom tariff number | 85366990 |
| Country of origin | Germany |
| Note | Made to Order (non-returnable) |

Technical data

Ambient conditions

| | |
|---------------------------------|----------------------------------|
| Ambient temperature (operation) | -25 °C ... 85 °C (Plug / socket) |
| Degree of protection | IP67 |

General

| | |
|------------------------|-------------------------------|
| Rated current at 40°C | 4 A |
| Rated voltage | 60 V |
| Number of positions | 5 |
| Contact resistance | ≤ 3 mΩ |
| Insulation resistance | ≥ 100 MΩ |
| Coding | B - inverse |
| Standards/regulations | M12 connector IEC 61076-2-101 |
| Status display | No |
| Surge voltage category | II |
| Pollution degree | 3 |

Panel feed-through - SACC-DSIV-FSB-5CON-L180 SCO - 1542606

Technical data

General

| | |
|-------------------|-------------------------------------|
| Connection method | Solder pins |
| Mounting type | Rear mounting M12 x 1 With flat nut |

Material

| | |
|---|------------------------------|
| Inflammability class according to UL 94 | HB |
| Contact material | Cu alloy |
| Contact surface material | Au |
| Contact carrier material | PA 66 |
| Material, knurls | Zinc die-cast, nickel-plated |
| Sealing material | NBR |

Classifications

eCl@ss

| | |
|------------|----------|
| eCl@ss 4.0 | 27250313 |
| eCl@ss 4.1 | 27250313 |
| eCl@ss 5.0 | 27143423 |
| eCl@ss 5.1 | 27143423 |
| eCl@ss 6.0 | 27143423 |
| eCl@ss 7.0 | 27449001 |

ETIM

| | |
|----------|----------|
| ETIM 3.0 | EC002061 |
| ETIM 4.0 | EC002061 |
| ETIM 5.0 | EC002061 |

UNSPSC

| | |
|---------------|----------|
| UNSPSC 6.01 | 31251501 |
| UNSPSC 7.0901 | 31251501 |
| UNSPSC 11 | 31251501 |
| UNSPSC 12.01 | 31251501 |
| UNSPSC 13.2 | 31251501 |

Approvals

Approvals

Approvals

UL Recognized

Ex Approvals

Panel feed-through - SACC-DSIV-FSB-5CON-L180 SCO - 1542606

Approvals

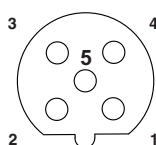
Approvals submitted

Approval details

| | |
|--------------------------------|-------|
| UL Recognized | |
| mm ² /AWG/kcmil | 26-20 |
| Nominal current I _N | 4 A |
| Nominal voltage U _N | 60 V |

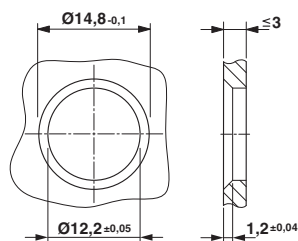
Drawings

Schematic diagram



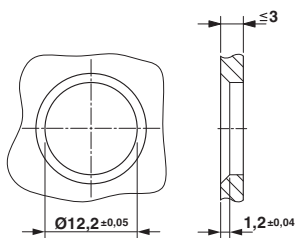
Pin assignment M12 socket, 5-pos., B-coded, female side

Dimensioned drawing



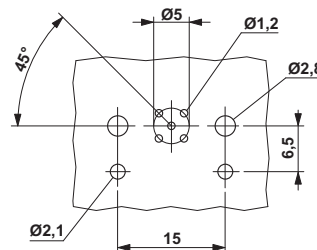
Housing cut-out for two-part M12 flush-type connectors with THR and wave soldering connection, version 1

Dimensioned drawing



Housing cut-out for two-part M12 flush-type connectors with THR and wave soldering connection, version 2

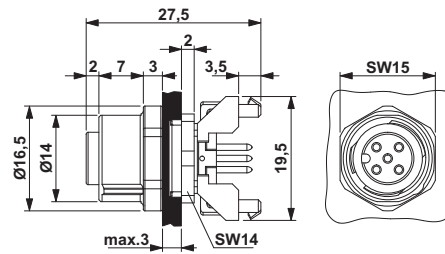
Drilling diagram



M12 flush-type connector

Panel feed-through - SACC-DSIV-FSB-5CON-L180 SCO - 1542606

Dimensioned drawing



M12 flush-type connector

Phoenix Contact 2015 © - all rights reserved
<http://www.phoenixcontact.com>