



Pony Testing International Group

报告编号(Report ID): E03113013019D~1

# 锂电池UN38.3测试报告

## Lithium Battery UN38.3 Test Report

样品名称

(Samples)

Li-ion Battery 053048

委托单位

(Client)

Xingke Professional Li-ion Battery Co., Ltd

生产单位

(Manufacturer)

Xingke Professional Li-ion Battery Co., Ltd

PONY 谱尼测试

Pony Testing International Group

[www.ponytest.com](http://www.ponytest.com)



## 声 明 Statement

1. 本《测试报告》依据本年度《联合国关于危险品运输建议书——试验和标准手册》、委托人（托运人或代理人）提供的物品及其运输信息出具。  
This test report is issued according to 《Recommendations on the transport of dangerous goods-test and criteria》 published in the current year, the information of the goods and its shipment provided by the applicant (Shipper or his agent).
2. 本《测试报告》的测试结论仅对客户所送样品负责。  
The conclusion of this test report is responsible only for the sample provided by the client.
3. 客户必须如实提供样品及资料，并保证申报品名和样品以及运输货物相同，否则本测试单位不承担任何相关责任。  
The client should provide samples and relevant data, at the same time, they should guarantee the consistence of the product's name they declared, the samples they provided and the goods to be transported. Otherwise we will not bear any relevant responsibilities.
4. 本《测试报告》经鉴定人、审核人、批准人签字并加盖印章后生效。  
This test report will be effective only after it is signed by the appraiser, checker and approver, and stamped by the testing center.
5. 本《测试报告》不得全部或部分复制，复制无效。本《测试报告》私自转让、复制、盗用、冒用、涂改，或以任何媒体形式篡改的均属无效，本测试单位将对上述行为追究其相应的法律责任。  
The test report can not be copied wholly or partly, the copied report is invalid. The test report is invalid when anything of the following happens: illegal transfer, reproduction, embezzlement, imposture, modification or tampering in any media form.
6. 本《测试报告》不考虑国家及经营人差异。  
The test report takes no account of the state and operator variations.
7. 测试结果中的运输方式应与货物的运输方式相一致，不同的运输方式，测试结果可能会有差异。  
The transportation way of goods should be the same as the way in the test report because different transportation way may have different conclusion.

### ▲ 防伪说明:

- (1)《测试报告》的报告编号是唯一的，即每一个报告编号仅对应唯一的《测试报告》；
- (2)《测试报告》采用特制防伪纸张印制，纸张表面带有“PONY”防伪纹路，该防伪纹路不支持复印，即复制件不会带有“PONY”防伪纹路；
- (3)《测试报告》采用的防伪纸张内部亦加带有高科技“PONY”防伪水印，只有在验钞机等紫外线照射下方可显出无色荧光防伪字样；
- (4)《测试报告》所盖防伪骑缝章中的一部分加盖于本测试单位的留底报告上，《测试报告》与本测试单位留底报告的骑缝章应拼合完整无缺。

www.ponytest.com ☎ Hotline 400-819-5688

Address: 北京市西城区苏州街19号3层 3rd Floor	Address: 上海市徐汇区斜土路680号3层 3rd Floor	Address: 深圳市南山区创业路中翼工业城 6栋12楼 12/F, Block 6	Address: 青岛市城阳区流亭镇利群国际 路211号 211 No. Lixun Road
Tel: (010) 82619629	Tel: (021) 64851999	Tel: (0755) 26050909	Tel: (0532) 88706869
Fax: (010) 82619629	Fax: (021) 64856403	Fax: (0755) 26068436	Fax: (0532) 88706877
E-mail: pony@ponytest.com	E-mail: pony@ponytest.com	E-mail: pony@ponytest.com	E-mail: pony@ponytest.com



Pony Testing International Group

## I、SAMPLE DESCRIPTION

Sample Name	Li-ion Battery		Battery Type	053048	
Client	Xingke Professional Li-ion Battery Co., Ltd				
Manufacturer	Xingke Professional Li-ion Battery Co., Ltd				
Nominal Voltage	3.7V	Rated Capacity	700mAh	Limited Charge Voltage	4.2V
Charge Current	0.5C	Maximum Continuous Charge Current	1.0C	End Charge Current	14mA
Cut-off Voltage	2.75V	Maximum Discharge Current	2C	Use	---
Cells Number	1PCS	Cell Model	053048	Rated Capacity	700mAh
Manufacturer of cell		Xingke Professional Li-ion Battery Co., Ltd			
Chemical component		LiCoO <sub>2</sub>			
Client date	2011-03-11		Finished date	2011-03-30	

## II、STANDARD

Recommendations on transport of dangerous goods, manual of test and criteria, section 38.3 lithium batteries.

## III、TEST ITEM

- |                        |                             |
|------------------------|-----------------------------|
| 1. Altitude simulation | 5. External short circuit   |
| 2. Thermal test        | 6. Impact                   |
| 3. Vibration           | 7. Overcharge (For battery) |
| 4. Shock               | 8. Forced discharge         |

## IV、CONCLUSION

ITEM	SAMPLE NUMBER	STANDARD	CONCLUSION
Altitude simulation	N1~N10	UN38.3	PASS
Thermal test			PASS
Vibration			PASS
Shock			PASS
External short circuit			PASS
Impact	N11~N20		PASS
Overcharge (For battery)	---		N/A (Not applicable)
Forced discharge	N21~N30 C1~C10		PASS

The submitted cells were complied with the stated requirements of section 38.3 lithium batteries.

Technique Controller: 

Approval Date: March 30, 2011

本检测单位保证检测的客观公正性, 并对委托单位的商业秘密履行保密义务; 委托单位对样品的代表性和资料的真实性负责, 本检测单位仅对样品负责, 委托单位对于检测结果的引用、使用所产生的直接或间接损失及一切法律后果, 本检测单位不承担任何经济和法律责任; 本《检测报告》如无PONY专用章和批准人签字或被复制, 则无效; 任何对本《检测报告》未经授权的部分或全部转载、篡改、伪造或复制行为都是违法的, 将被追究民事、行政甚至刑事责任。

防伪说明: (1)《检测报告》的报告编号是唯一的, 即每一个报告编号仅对应唯一的《检测报告》;

(2)《检测报告》采用特制防伪纸张印制, 纸张表面带有“PONY”防伪纹路, 该防伪纹路不支持复印, 即复制件不会带有“PONY”防伪纹路;

(3)《检测报告》采用的防伪纸张内部亦加带有高科技“PONY”防伪水印, 只有在验钞机等紫外线照射下方可显出无色荧光防伪字样;

(4)《检测报告》所盖防伪骑缝章中的一部分加盖于本检测单位的留底报告上, 《检测报告》与本检测单位留底报告的骑缝章应拼合完整无缺。

www.ponytest.com ☎Hotline 400-819-5688

Add: Yingzhi Building, No. 49-3, Suzhou Road, Haidian District, Beijing	Building 35, No. 680, Guiping Road, Xuhui District, Shanghai	Building 60 of Zhongxing Industry City, Chuangye Road, Nanshan District, Shenzhen	No. 2-1, Keyuan Wei Road 3, Hi-tech Park, Laoshan District, Qingdao
Tel: (010)82618116	(021)64851999	(0755)26050909	(0532)88706866
Fax: (010)82619629	(021)64856403	(0755)26068336	(0532)88706877
E-mail: pony@ponytest.com	esh@ponytest.com	sz@ponytest.com	qd@ponytest.com





Pony Testing International Group

## Notes:

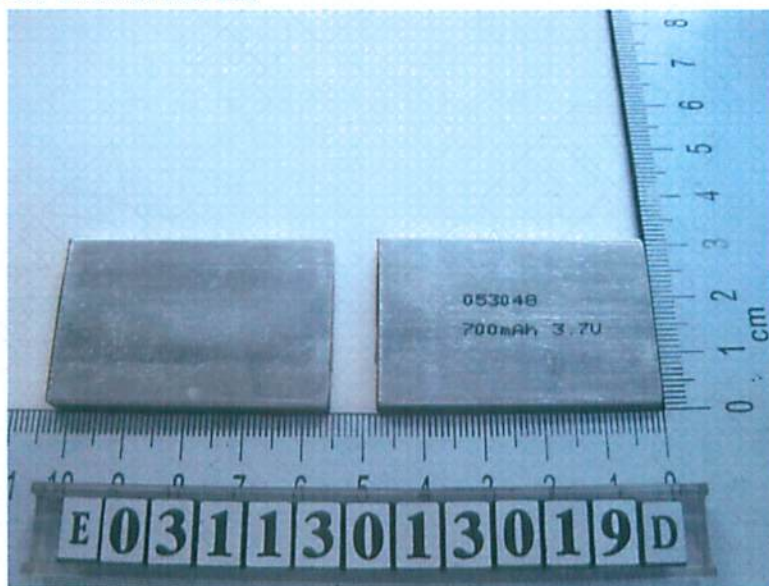
Cells of N1~N10 are full charged after one cycle;

Cells of N11~N20 are half-charged after one cycle;

Cells of N21~N30 are full discharged after one cycle;

Cells of C1~C10 are full discharged after fifty cycles.

## V、PHOTO OF THE SAMPLE



Authenticate the photo on original report only

本检测单位保证检测的客观公正性，并对委托单位的商业秘密履行保密义务；委托单位对样品的代表性和资料的真实性负责，本检测单位仅对样品负责，委托单位对于检测结果的使用、使用所产生的直接或间接损失及一切法律后果，本检测单位不承担任何经济和法律后果；本《检测报告》如无PONY专用章和批准人签字或被复制，则无效；任何对本《检测报告》未经授权的部分或全部转载、篡改、伪造或复制行为都是违法的，将被追究民事、行政甚至刑事责任。

防伪说明：(1)《检测报告》的报告编号是唯一的，即每一个报告编号仅对应唯一的《检测报告》；  
(2)《检测报告》采用特制防伪纸张印制，纸张表面带有“PONY”防伪纹路，该防伪纹路不支持复印，即复制件不会带有“PONY”防伪纹路；  
(3)《检测报告》采用的防伪纸张内部亦加带有高科技“PONY”防伪水印，只有在验钞机等紫外线照射下方可见出无色荧光防伪字样；  
(4)《检测报告》所盖防伪骑缝章中的一部分加盖于本检测单位的留底报告上，《检测报告》与本检测单位留底报告的骑缝章应拼合完整无缺。

Pony Testing International Group

www.ponytest.com ☎Hotline 400-819-5688

Add: Yingzhi Building, No.49-3, Suzhou Road, Haidian District, Beijing	Building 35, No.680, Guiping Road, Xuhui District, Shanghai	Building 60 of Zhongxing Industry City, Chuangye Road, Nanshan District, Shenzhen	No.2-1, Keyuan Wei Road 3, Hi-tech Park, Laoshan District, Qingdao
Tel: (010)82618116	(021)64851999	(0755)26050909	(0532)88706866
Fax: (010)82619629	(021)64856403	(0755)26068336	(0532)88706877
E-mail: pony@ponytest.com	cs@ponytest.com	sz@ponytest.com	qd@ponytest.com





Pony Testing International Group

## VI、 TEST METHOD

Test 1 to 5 must be conducted in sequence on the same cell.

In order to quantify the mass loss, the following procedure is provided:

$$\text{Mass loss(\%)} = (M1-M2) / M1 \times 100\%$$

Where M1 is the mass before the test and M2 is the mass after the test. When mass loss does not exceed the value in table blow, it shall be considered as "no mass loss".

Mass M of cell or battery	Mass loss limit
M<1g	0.5%
1g<M<5g	0.2%
M≥5g	0.1%

In test 1 to 4, cells meet this requirement if there is no mass loss, no leakage, no venting, no disassembly, no rupture and no fire and if the open circuit voltage of each test cell or battery after testing is not less than 90% of its voltage immediately prior to this procedure. The requirement relating to voltage is not applicable to test cells and batteries at fully discharged states.

### 1. Altitude simulation

Test batteries or cells shall be stored at a pressure of 11.6 kPa or less for at least six hours at ambient temperature(20±5℃).

### 2. Thermal test

Test cells and batteries are to be stored for at least six hours at a test temperature equal to 75±2℃, followed by storage for at least six hours at a test temperature equal to -40±2℃. The maximum time interval between test temperature extremes is 30 minutes. This procedure is to be repeated 10 times, after which all cells and batteries are to be stored for 24 hours at ambient temperature(20±5℃). For large cell and batteries the duration of exposure to the test temperature extremes should be at least 12 hours.

### 3. Vibration

Cells and batteries are firmly secured to the platform of the vibration machine without distorting the cells in such a manner as to faithfully transmit the vibration. The vibration shall be a sinusoidal waveform with a logarithmic sweep between 7 Hz and 200 Hz and back to 7 Hz traversed in 15minutes. This cycle shall be repeated 12 times for a total of 3 hours for each of three mutually perpendicular mounting positions of the cell. One of the directions of vibration must be perpendicular to the terminal face.

The logarithmic frequency sweep is as follows: from 7 Hz a peak acceleration of 1 g is maintained until 18 Hz is reached. The amplitude is then maintained at 0.8 mm (1.6 mm total excursion) and the frequency increased until a peak acceleration of 8 g occurs (approximately 50 Hz). A peak acceleration of 8 g is then maintained until the frequency is increased to 200 Hz.

本检测单位保证检测的客观公正性,并对委托单位的商业秘密履行保密义务;委托单位对样品的代表性和资料的真实性负责,本检测单位仅对样品负责,委托单位对于检测结果的使用、使用所产生的直接或间接损失及一切法律后果,本检测单位不承担任何经济和法律后果;本《检测报告》如无PONY专用章和批准人签字或被复制,则无效;任何对本《检测报告》未经授权的部分或全部转载、篡改、伪造或复制行为都是违法的,将被追究民事、行政甚至刑事责任。

防伪说明: (1)《检测报告》的报告编号是唯一的,即每一个报告编号仅对应唯一的《检测报告》;

(2)《检测报告》采用特制防伪纸张印制,纸张表面带有“PONY”防伪纹络,该防伪纹络不支持复印,即复制件不会带有“PONY”防伪纹络;

(3)《检测报告》采用的防伪纸张内部亦加带有高科技“PONY”防伪水印,只有在验钞机等紫外线照射下方可显出无色荧光防伪字样;

(4)《检测报告》所盖防伪骑缝章中的一部分加盖于本检测单位的留底报告上,《检测报告》与本检测单位留底报告的骑缝章应拼合完整无缺。





Pony Testing International Group

#### 4. Shock

Test cells and batteries shall be secured to the testing machine by means of a rigid mount, which will support all mounting surfaces of each test battery. Each cell or battery shall be subjected to a half-sine shock of peak acceleration of 150 g and pulse duration of 6 milliseconds. Each cell or battery shall be subjected to three shocks in the positive direction followed by three shocks in the negative direction of three mutually perpendicular mounting positions of the cell or battery for a total of 18 shocks.

#### 5. External short circuit

The cell and battery to be tested shall be temperature stabilized so that its external case temperature reaches  $55 \pm 2^\circ\text{C}$  and then the cell or battery shall be subjected to a short circuit condition with a total external resistance of less than 0.1 ohm at  $55 \pm 2^\circ\text{C}$ . This short circuit condition is continued for at least one hour after the cell or battery external case temperature has returned to  $55 \pm 2^\circ\text{C}$ . The cell or battery must be observed for a further six hours for the test to be conclude.

Cells and batteries meet this requirement if their temperature does not exceed  $170^\circ\text{C}$  and there is no disassembly, no rupture and no fire within six hours of this test.

#### 6. Impact

The test sample cell or component cell is to be placed on a flat surface. A 15.8 mm diameter bar is to be placed across the center of the sample. A 9.1 kg mass is to be dropped from a height of  $61 \pm 2.5$  cm onto the sample.

A cylindrical or prismatic cell is to be impacted with its longitudinal axis parallel to the flat surface and perpendicular to the longitudinal axis of the 15.8 mm diameter curved surface lying across the center of the test sample. A prismatic cell is also to be rotated 90 degrees around its longitudinal axis so that both the wide and narrow side will be subjected to the impact. Each sample is to be subjected to only a single impact; Separate samples are to be used for each impact.

Cells and component cells meet this requirement if their external temperature does not exceed  $170^\circ\text{C}$  and there is no disassembly and no fire within six hours of this test.

#### 7. Forced discharge

Each cell shall be forced discharged at ambient temperature by connecting its in series with a 12 V D.C. power supply at an initial current equal to the maximum discharge current specified by the manufacturer. The specified discharge current is to be obtained by connecting a resistive load of the appropriate size and rating in series with the test cell. Each cell shall be forced discharged for a time interval (in hours) equal to its rated capacity divided by the initial test current (in Ampere).

Primary or rechargeable cells meet this requirement if there is no disassembly and fire within seven days of the test.

本检测单位保证检测的客观公正性,并对委托单位的商业秘密履行保密义务;委托单位对样品的代表性和资料的真实性负责,本检测单位仅对样品负责,委托单位对于检测结果的使用、使用所产生的直接或间接损失及一切法律后果,本检测单位不承担任何经济和法律责任;本《检测报告》如无PONY专用章和批准人签字或被复制,则无效;任何对本《检测报告》未经授权的部分或全部转载、篡改、伪造或复制行为都是违法的,将被追究民事、行政甚至刑事责任。

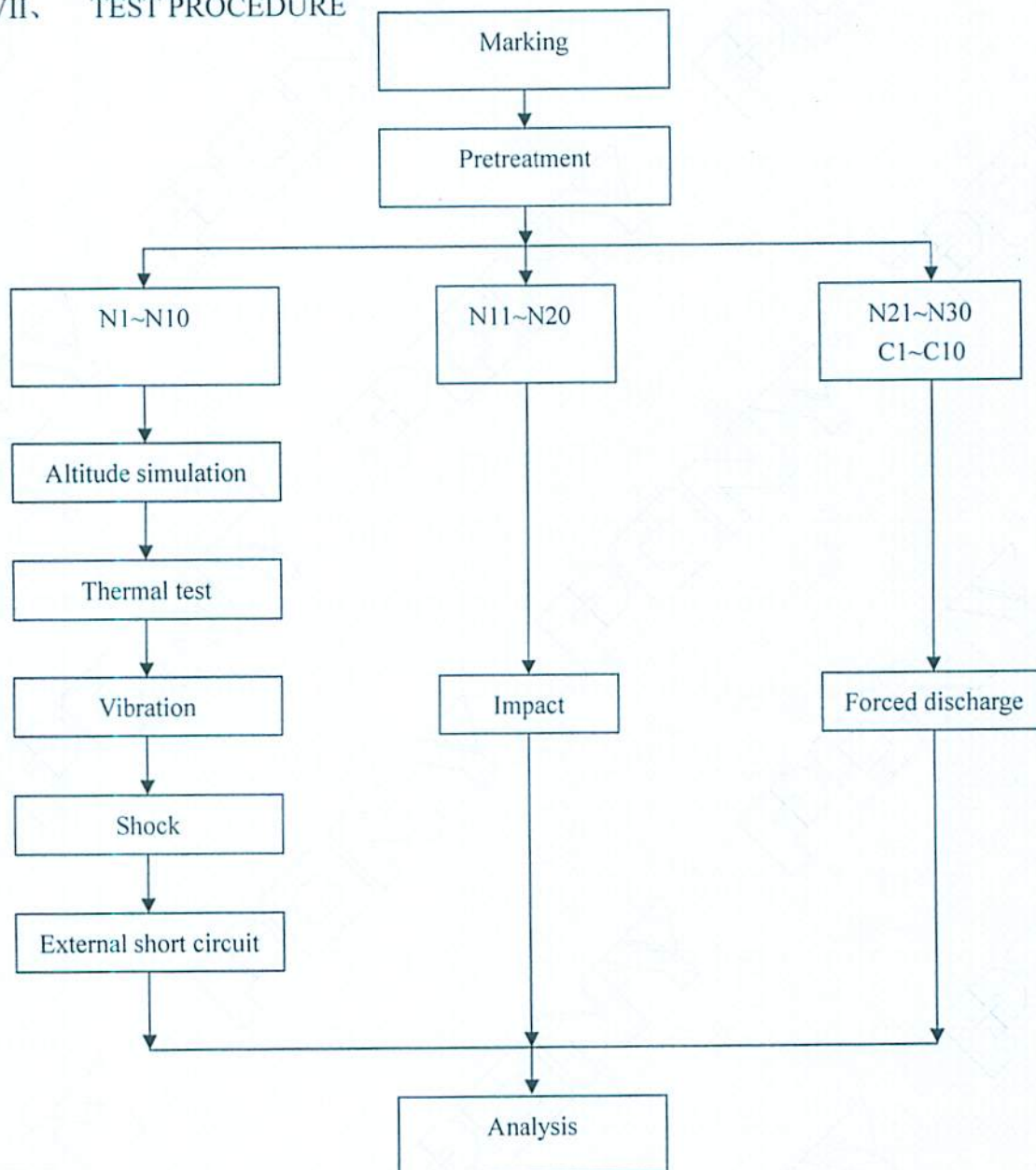
防伪说明: (1)《检测报告》的报告编号是唯一的,即每一个报告编号仅对应唯一的《检测报告》;  
(2)《检测报告》采用特制防伪纸张印制,纸张表面带有“PONY”防伪纹路,该防伪纹路不支持复印,即复制件不会带有“PONY”防伪纹路;  
(3)《检测报告》采用的防伪纸张内部亦加带有高科技“PONY”防伪水印,只有在验钞机等紫外线照射下方可显出无色荧光防伪字样;  
(4)《检测报告》所盖防伪骑缝章中的一部分加盖于本检测单位的留底报告上,《检测报告》与本检测单位留底报告的骑缝章应拼合完整无缺。





Pony Testing International Group

## VII、 TEST PROCEDURE



## VIII、 TEST APPARATUS

SZSB-121 Rechargeable battery test system  
 SZSB-280 Vacuum chamber (for battery test)  
 SZSB-120 Temperature circulation chamber  
 SZSB-128 Vibration test instrument  
 SZSB-082 Shock test instrument  
 SZSB-281 Battery anti-explosion chamber

SZSB-077 DC regulated power supply  
 SZSB-081 Impact test instrument  
 SZSB-125 Electronic balance  
 SZSB-090 Digital multimeter  
 SZSB-185 Thermoelectric pair

本检测单位保证检测的客观公正性，并对委托单位的商业秘密履行保密义务；委托单位对样品的代表性和资料的真实性负责，本检测单位仅对样品负责，委托单位对于检测结果的使用、使用所产生的直接或间接损失及一切法律后果，本检测单位不承担任何经济和法律责任；本《检测报告》如无PONY专用章和批准人签字或被复制，则无效；任何对本《检测报告》未经授权的部分或全部转载、篡改、伪造或复制行为都是违法的，将被追究民事、行政甚至刑事责任。

防伪说明：(1)《检测报告》的报告编号是唯一的，即每一个报告编号仅对应唯一的《检测报告》；

(2)《检测报告》采用特制防伪纸张印制，纸张表面带有“PONY”防伪纹路，该防伪纹路不支持复印，即复制件不会带有“PONY”防伪纹路；

(3)《检测报告》采用的防伪纸张内部亦加带有高科技“PONY”防伪水印，只有在验钞机等紫外线照射下方可显出无色荧光防伪字样；

(4)《检测报告》所盖防伪骑缝章中的一部分加盖于本检测单位的留底报告上，《检测报告》与本检测单位留底报告的骑缝章应拼合完整无缺。





Pony Testing International Group

## IX、 DATA

## 1. Altitude simulation

No.	Pre-test		After test		Mass loss (%)	Voltage loss (%)	Status
	Mass (g)	Voltage (V)	Mass (g)	Voltage (V)			
N1	17.640	4.17	17.640	4.17	0.000	0.00	PASS
N2	17.915	4.17	17.915	4.17	0.000	0.00	PASS
N3	18.046	4.17	18.045	4.17	0.006	0.00	PASS
N4	17.574	4.17	17.574	4.17	0.000	0.00	PASS
N5	17.954	4.17	17.953	4.16	0.006	0.24	PASS
N6	17.820	4.17	17.820	4.17	0.000	0.00	PASS
N7	18.155	4.17	18.155	4.17	0.000	0.00	PASS
N8	17.806	4.17	17.806	4.17	0.000	0.00	PASS
N9	17.584	4.17	17.583	4.17	0.006	0.00	PASS
N10	18.035	4.17	18.035	4.17	0.000	0.00	PASS

## 2. Thermal test

No.	Pre-test		After test		Mass loss (%)	Voltage loss (%)	Status
	Mass (g)	Voltage (V)	Mass (g)	Voltage (V)			
N1	17.640	4.17	17.634	4.12	0.034	1.20	PASS
N2	17.915	4.17	17.909	4.13	0.033	0.96	PASS
N3	18.045	4.17	18.040	4.13	0.028	0.96	PASS
N4	17.574	4.17	17.568	4.12	0.034	1.20	PASS
N5	17.953	4.16	17.947	4.12	0.033	0.96	PASS
N6	17.820	4.17	17.815	4.13	0.028	0.96	PASS
N7	18.155	4.17	18.149	4.12	0.033	1.20	PASS
N8	17.806	4.17	17.800	4.12	0.034	1.20	PASS
N9	17.583	4.17	17.578	4.13	0.028	0.96	PASS
N10	18.035	4.17	18.029	4.12	0.033	1.20	PASS

本检测单位保证检测的客观公正性，并对委托单位的商业秘密履行保密义务；委托单位对样品的代表性和资料的真实性负责，本检测单位仅对样品负责，委托单位对于检测结果的使用、使用所产生的直接或间接损失及一切法律后果，本检测单位不承担任何经济和法律责任；本《检测报告》如无PONY专用章和批准人签字或被复制，则无效；任何对本《检测报告》未经授权的部分或全部转载、篡改、伪造或复制行为都是违法的，将被追究民事、行政甚至刑事责任。

防伪说明：(1)《检测报告》的报告编号是唯一的，即每一个报告编号仅对应唯一的《检测报告》；  
(2)《检测报告》采用特制防伪纸张印制，纸张表面带有“PONY”防伪纹路，该防伪纹路不支持复印，即复制件不会带有“PONY”防伪纹路；  
(3)《检测报告》采用的防伪纸张内部亦加带有高科技“PONY”防伪水印，只有在验钞机等紫外线照射下方可见出无色荧光防伪字样；  
(4)《检测报告》所盖防伪骑缝章中的一部分加盖于本检测单位的留底报告上，《检测报告》与本检测单位留底报告的骑缝章应拼合完整无缺。





Pony Testing International Group

## 3. Vibration

No.	Pre-test		After test		Mass loss (%)	Voltage loss (%)	Status
	Mass (g)	Voltage (V)	Mass (g)	Voltage (V)			
N1	17.634	4.12	17.634	4.12	0.000	0.00	PASS
N2	17.909	4.13	17.908	4.12	0.006	0.24	PASS
N3	18.040	4.13	18.039	4.13	0.006	0.00	PASS
N4	17.568	4.12	17.568	4.12	0.000	0.00	PASS
N5	17.947	4.12	17.946	4.12	0.006	0.00	PASS
N6	17.815	4.13	17.815	4.12	0.000	0.24	PASS
N7	18.149	4.12	18.149	4.12	0.000	0.00	PASS
N8	17.800	4.12	17.800	4.12	0.000	0.00	PASS
N9	17.578	4.13	17.577	4.12	0.006	0.24	PASS
N10	18.029	4.12	18.029	4.12	0.000	0.00	PASS

## 4. Shock

NO.	Pre-test		After test		Mass loss (%)	Voltage loss (%)	Status
	Mass (g)	Voltage (V)	Mass (g)	Voltage (V)			
N1	17.634	4.12	17.634	4.12	0.000	0.00	PASS
N2	17.908	4.12	17.908	4.12	0.000	0.00	PASS
N3	18.039	4.13	18.038	4.12	0.006	0.24	PASS
N4	17.568	4.12	17.568	4.12	0.000	0.00	PASS
N5	17.946	4.12	17.946	4.12	0.000	0.00	PASS
N6	17.815	4.12	17.814	4.12	0.006	0.00	PASS
N7	18.149	4.12	18.149	4.12	0.000	0.00	PASS
N8	17.800	4.12	17.800	4.12	0.000	0.00	PASS
N9	17.577	4.12	17.577	4.12	0.000	0.00	PASS
N10	18.029	4.12	18.028	4.11	0.006	0.24	PASS

本检测单位保证检测的客观公正性，并对委托单位的商业秘密履行保密义务；委托单位对样品的代表性和资料的真实性负责，本检测单位仅对样品负责，委托单位对于检测结果的使用、使用所产生的直接或间接损失及一切法律后果，本检测单位不承担任何经济和法律后果；本《检测报告》如无PONY专用章和批准人签字或被复制，则无效；任何对本《检测报告》未经授权的部分或全部转载、篡改、伪造或复制行为都是违法的，将被追究民事、行政甚至刑事责任。

防伪说明：(1)《检测报告》的报告编号是唯一的，即每一个报告编号仅对应唯一的《检测报告》；  
 (2)《检测报告》采用特制防伪纸张印制，纸张表面带有“PONY”防伪纹络，该防伪纹络不支持复印，即复制件不会带有“PONY”防伪纹络；  
 (3)《检测报告》采用的防伪纸张内部亦加带有高科技“PONY”防伪水印，只有在验钞机等紫外线照射下方可见出无色荧光防伪字样；  
 (4)《检测报告》所盖防伪骑缝章中的一部分加盖于本检测单位的留底报告上，《检测报告》与本检测单位留底报告的骑缝章应拼合完整无缺。





Pony Testing International Group

## 5. External short circuit

No.	Peak temperature(°C)	Status
N1	94	PASS
N2	86	PASS
N3	89	PASS
N4	92	PASS
N5	87	PASS
N6	89	PASS
N7	94	PASS
N8	88	PASS
N9	93	PASS
N10	97	PASS

## 6. Impact

No.	Peak temperature(°C)	Status
N11	85	PASS
N12	89	PASS
N13	84	PASS
N14	82	PASS
N15	91	PASS
N16	89	PASS
N17	86	PASS
N18	88	PASS
N19	94	PASS
N20	89	PASS

本检测单位保证检测的客观公正性,并对委托单位的商业秘密履行保密义务;委托单位对样品的代表性和资料的真实性负责,本检测单位仅对样品负责,委托单位对于检测结果的使用、使用所产生的直接或间接损失及一切法律后果,本检测单位不承担任何经济和法律后果;本《检测报告》如无PONY专用章和批准人签字或被复制,则无效;任何对本《检测报告》未经授权的部分或全部转载、篡改、伪造或复制行为都是违法的,将被追究民事、行政甚至刑事责任。

防伪说明:(1)《检测报告》的报告编号是唯一的,即每一个报告编号仅对应唯一的《检测报告》;  
(2)《检测报告》采用特制防伪纸张印制,纸张表面带有“PONY”防伪纹路,该防伪纹路不支持复印,即复制件不会带有“PONY”防伪纹路;  
(3)《检测报告》采用的防伪纸张内部亦加带有高科技“PONY”防伪水印,只有在验钞机等紫外线照射下方可见出无色荧光防伪字样;  
(4)《检测报告》所盖防伪骑缝章中的一部分加盖于本检测单位的留底报告上,《检测报告》与本检测单位留底报告的骑缝章应拼合完整无缺。





Pony Testing International Group

## 7. Overcharge (For battery)

N/A (Not applicable)

## 8. Forced discharge

No.	Status
N16	PASS
N17	PASS
N18	PASS
N19	PASS
N20	PASS
N21	PASS
N22	PASS
N23	PASS
N24	PASS
N25	PASS
C1	PASS
C2	PASS
C3	PASS
C4	PASS
C5	PASS
C6	PASS
C7	PASS
C8	PASS
C9	PASS
C10	PASS

本检测单位保证检测的客观公正性，并对委托单位的商业秘密履行保密义务；委托单位对样品的代表性和资料的真实性负责，本检测单位仅对样品负责，委托单位对于检测结果的使用、使用所产生的直接或间接损失及一切法律后果，本检测单位不承担任何经济和法律责任；本《检测报告》如无PONY专用章和批准人签字或被复制，则无效；任何对本《检测报告》未经授权的部分或全部转载、篡改、伪造或复制行为都是违法的，将被追究民事、行政甚至刑事责任。

防伪说明：(1)《检测报告》的报告编号是唯一的，即每一个报告编号仅对应唯一的《检测报告》；

(2)《检测报告》采用特制防伪纸张印制，纸张表面带有“PONY”防伪纹路，该防伪纹路不支持复印，即复制件不会带有“PONY”防伪纹路；

(3)《检测报告》采用的防伪纸张内部亦加带有高科技“PONY”防伪水印，只有在验钞机等紫外线照射下方可显出无色荧光防伪字样；

(4)《检测报告》所盖防伪骑缝章中的一部分加盖于本检测单位的留底报告上，《检测报告》与本检测单位留底报告的骑缝章应拼合完整无缺。