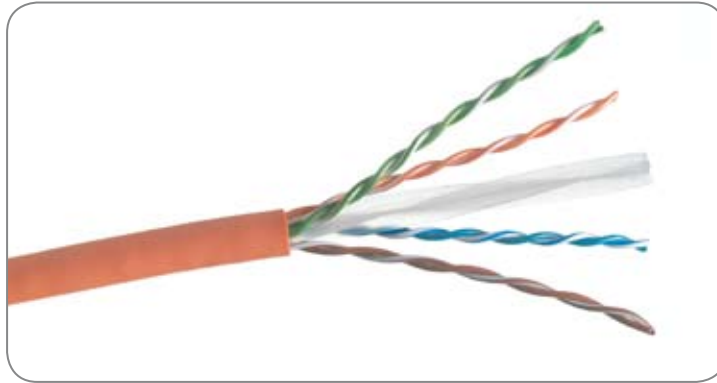


# TrueNet®

## Category 6 Unshielded Horizontal Cable



TrueNet Horizontal Category 6 cables are core components of the ADC KRONE impedance-matched structured cabling system.

The TrueNet cable portfolio offers component compliant products that exceed current Category 6 standards and come complete with third party certification. When used in a Channel alongside TrueNet patch panels, patch cords and jacks it provides zero bit error performance safeguarding the data integrity and maximises data throughput.

Category 6 cables are available in single (4 Pair) or shotgun (2x4PR) configurations in both low smoke zero halogen (LSZH) and PVC sheaths to suit all installation requirements.

### Features

- Performance exceeding Category 6 specifications up to 250MHz
- Finely tuned to impedance match with other TrueNet Category 6 connectivity
- Comprehensive portfolio of cable types
- Fully interoperable and backwards compatible
- Third party certification at a component level

### Benefits

- Maximum throughput, reliability and performance in your IT network
- Delivers zero bit errors, removing the need for Ethernet to re-transmit data packets and ensures data integrity
- Flexibility to suit the installation requirement
- Third party certification offers complete peace of mind and guaranteed quality
- Covered by the TrueNet System warranty

TECHNICAL DATA



**Technical Assistance:**  
**Europe & Middle East**  
+32 2 712 6542  
[euro.tac@adckrone.com](mailto:euro.tac@adckrone.com)  
[www.adckrone.com](http://www.adckrone.com)

**South Africa**  
+27 11 466 3333  
[infosaa@adckrone.com](mailto:infosaa@adckrone.com)

**United Kingdom**  
0800 960236  
[contactuk@adckrone.com](mailto:contactuk@adckrone.com)

## Ordering Information

Description	Catalogue Number
Category 6 LSZH 4PR Orange 305m reel-in-a-box	TN6TZ1-ORMB
Category 6 LSZH 4PR Orange 1000m reel	TN6TZ1-ORM6
Category 6 LSZH 2x4PR Orange 500m reel	TN6TZ1X2-ORM3
Category 6 PVC 4PR Grey 305m reel-in-a-box	TN6TR-LSMB
Category 6 PVC 2x4PR Grey 500m reel	TN6TMX2-LSM3

Other variants, colours and lengths are available subject to lead-times and minimum order quantities. Please contact ADC KRONE Customer Services on +44 (0) 1242 264 400.

## Technical Specifications

### Construction

Conductors:	24 AWG solid bare copper
Insulation:	Polyolefin
Pairing:	Short, staggered pair lays
Filler:	Polyolefin
Jacket LSZH:	Low Smoke Zero Halogen IEC 61034; IEC 60754-1 & -2
Jacket PVC:	Lead-free flame retardant PVC
Nominal outer diameter - 4PR	5.5mm
Nominal outer diameter - 2x4PR	6.0/13.0mm
Flame test	IEC 60332-1

### Electrical Characteristics

Conductors DC resistance (maximum)	9.38 Ohm/100 metres
DC resistance unbalance (maximum)	2%
Mutual capacitance (maximum)	5.6 nF/100 metres
Operating temperature (maximum)	75°C
Operating voltage	300 VDC
Worst case cable skew	25 nS/100 metres
Nominal velocity of propagation	69%

Testing requirements of cable according to ISO/IEC 11801:200 2nd Edition (ref IEC 61156 series), ANSI/TIA/EIA-568-B.2.1 and EN 50173:2002 (ref EN 50288 series).

As there are infinite channel and permanent link combinations, to guarantee Category 6 system performance, the focus should be at the component level.

Third party test certificates at a Channel, Permanent Link and Component level are available for all ADC KRONE Category 6 products.



**Web Site:** [www.adckrone.com](http://www.adckrone.com)

**UK Office:** ADC Communications (UK) Ltd., Runnings Road, Kingsditch Trading Estate, Cheltenham, Gloucestershire GL51 9NQ, United Kingdom • Phone: +44 (0) 1242 264 400 Fax: +44 (0) 1242 264 488 [contactuk@adckrone.com](mailto:contactuk@adckrone.com)

**South African Office:** ADC Communications (Africa) (Pty) Ltd., 59 Kyalami Business Park, Midrand, 1685, Johannesburg, South Africa • Phone: +27 11 466 3333 Fax: +27 11 466 3300 Email: [infos@adckrone.com](mailto:infos@adckrone.com)

**EMEA Office:** ADC GmbH, Beeskowdamm, 3-11, 14167 Berlin, Germany • Phone: +49 308 453 1818 Fax: +49 308 453 1703. For a listing of all ADC KRONE's global sales office locations, please refer to our web site.

Specifications published here are current as of the date of publication of this document. Because we are continuously improving our products, ADC KRONE reserves the right to change specifications without prior notice. At any time, you may verify product specifications by contacting ADC GmbH headquarters in Berlin. ADC Telecommunications, Inc. views its patent portfolio as an important corporate asset and vigorously enforces its patents.

**Part Number 101737BE Jan 06 Original © 2006 ADC Communications (UK) Ltd. All Rights Reserved**