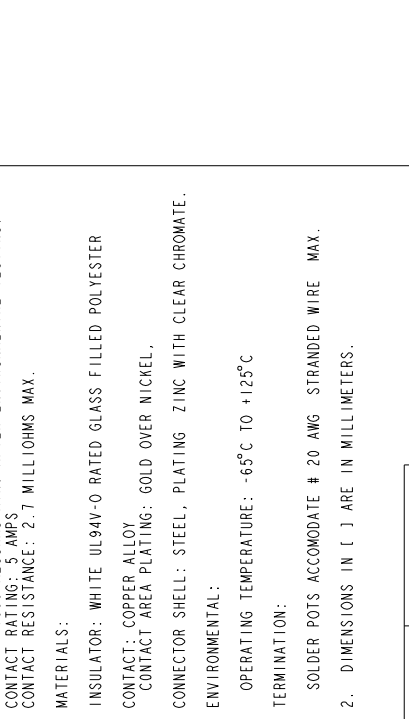


REV	DOCUMENT	APP	DATE
A	DO 05-1094	AKB	1/7/06
B	ECN 06E468		

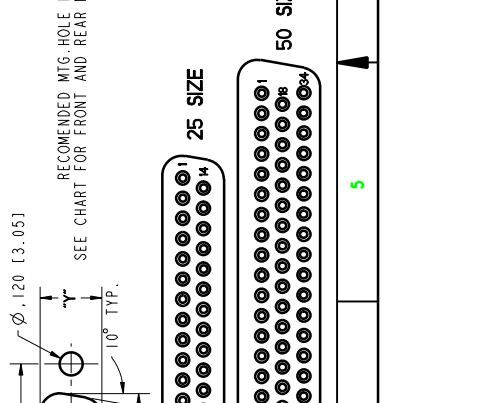
DRAWING REVISIONS

NOTES:

- SPECIFICATIONS:
 - ELECTRICAL: WITHSTANDING VOLTAGE: MINIMUM 1250 V RMS @ SEA LEVEL
 - INSULATION RESISTANCE: INITIAL 5000 MEGOHMS MAXIMUM, 1000 MEGOHMS MIN. AFTER ENVIRONMENTAL TESTING.
 - CONTACT RATING: 5 AMPS
 - CONTACT RESISTANCE: 2.7 MILLIOHMS MAX.
- MATERIALS:
 - INSULATOR: WHITE UL94V-0 RATED GLASS FILLED POLYESTER
 - CONTACT: COPPER ALLOY
 - CONTACT AREA PLATING: GOLD OVER NICKEL,
 - CONNECTOR SHELL: STEEL, PLATING ZINC WITH CLEAR CHROMATE.
 - ENVIRONMENTAL: OPERATING TEMPERATURE: -65°C TO +125°C
 - TERMINATION: SOLDER POTS ACCOMODATE # 20 AWG STRANDED WIRE MAX.
- DIMENSIONS IN [] ARE IN MILLIMETERS.



NUMBER OF POSITIONS	DIMENSION										
	SELECTIVE GOLD FLASH PLATING (.120" [3.05] MTG. HOLES)	A"	B"	C"	D"	E"	F"	G"	FRONT MOUNTING HOLE DIMENSIONS X"	REAR MOUNTING HOLE DIMENSIONS Y"	Y"
9	DEH-9S	702 [1 09 00]	1.213 [30.81]	.984 [24.99]	.640 [16.26]	.759 [19.28]	.422 [10.72]	.874 [22.20]	.806 [20.47]		
15	DAH-15S	702 [1 15 00]	1.541 [39.14]	1.312 [33.32]	.968 [24.59]	1.083 [27.51]	.422 [10.72]	1.202 [30.53]	[28.80]	.513 [13.03]	.449 [11.40]
25	DBH-25S	702 [1 25 00]	2.088 [53.04]	1.852 [47.04]	1.508 [38.30]	1.629 [41.38]	.422 [10.72]	1.743 [44.27]	[42.52]		
37	DCH-37S	702 [1 37 00]	2.729 [69.32]	2.500 [64.50]	2.156 [54.76]	2.272 [57.71]	.422 [10.72]	2.391 [60.73]	[59.08]		
50	DDH-50S	702 [1 50 00]	2.635 [66.93]	2.406 [61.11]	2.062 [52.37]	2.178 [55.32]	.534 [13.56]	2.297 [58.34]	[56.34]	.623 [15.82]	.555 [14.10]



UNITS		PRO/E	
ENGLISH	DO NOT SCALE DRAWING	DATE	TITLE
		06/10/05	D-SUB SOLDER CUP CONNECTOR SOCKET ASS'Y (.120" MTG HOLES)
		06/10/05	MATERIAL
		07/09/05	MATERIAL SPEC NUMBER FINISH
		07/07/05	CAD FILE NUMBER DXH-XXS
		07/06/05	QUALITY ASSURANCE
			CAGE IDENT NO SIZE
			SCALE
			SHEET 1 OF 1

ROHS COMPLIANT

Cinch

MODELED BY: J. SREJA

1700 F. INLEY RD. COMBOD, IL. 60148

71185 B

D#H-XXS