

A 10 -12 - Ferrule

3200331

<https://www.phoenixcontact.com/gb/products/3200331>



Please be informed that the data shown in this PDF document is generated from our online catalog. Please find the complete data in the user documentation. Our general terms of use for downloads are valid.



Ferrule, Length contact range: 12 mm, sleeve length: 12 mm, color: silver

Your advantages

- The dimensions of the ferrules conform to DIN 46228-1
- The ferrules without plastic sleeve are made from soft tin-plated electrolytic copper

Commercial data

Item number	3200331
Packing unit	500 pc
Minimum order quantity	500 pc
Sales key	BH3412
Product key	BH3412
Catalog page	Page 480 (C-3-2019)
GTIN	4017918093983
Weight per piece (including packing)	0.295 g
Weight per piece (excluding packing)	0.295 g
Customs tariff number	85369010
Country of origin	DE

A 10 -12 - Ferrule

3200331

<https://www.phoenixcontact.com/gb/products/3200331>



Technical data

Product properties

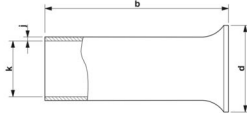
Product type	Cable end sleeve
Conductor category	stranded conductors, class 2, 5, 6 / B, C, K, M
Product property	UL certified
	Made from soft tin-plated electrolytic copper
	Correspond to the requirements of DIN 46228-1 and UL 486F in terms of size
	Long/short-term temperature: +105°C/+120°C

Connection data

Conductor connection

Conductor cross section flexible max.	10 mm ²
Conductor cross section AWG max.	8
Stripping length	12 mm

Dimensions

Dimensional drawing	
Sleeve length	12 mm
Length contact range	12 mm
Maximum stripping length	12 mm
Ferrule diameter	4.5 mm
Sleeve wall thickness	0.2 mm
Inner dimensions of the insulating collar	5.8 mm

Material specifications

Color	silver-colored
Material	CU-DHP
Coating	galvanically tin-plated
Surface characteristics	Tin-plated

Mechanical properties

Technical data

Sleeve length	12 mm
---------------	-------

Environmental and real-life conditions

Ambient conditions

A 10 -12 - Ferrule

3200331

<https://www.phoenixcontact.com/gb/products/3200331>



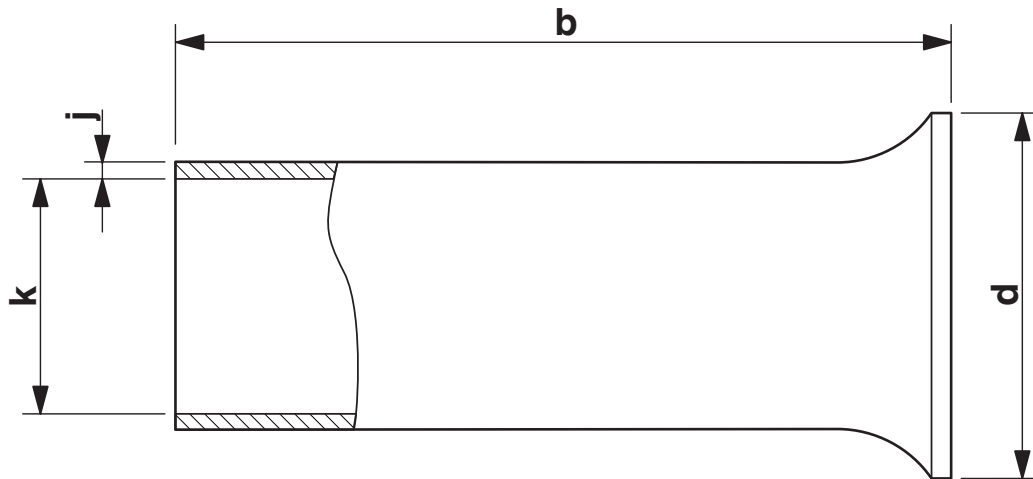
Permanent temperature	105 °C
Short-term temperature	120 °C

Standards and regulations

Design according to standard	DIN 46228-1, UL 486F-A
------------------------------	------------------------

Drawings

Dimensional drawing



Sleeve length (b), insulating collar inner dimension (d), sleeve diameter (k), sleeve wall thickness (j)

A 10 -12 - Ferrule

3200331

<https://www.phoenixcontact.com/gb/products/3200331>



Approvals

🔗 To download certificates, visit the product detail page: <https://www.phoenixcontact.com/gb/products/3200331>



cULus Listed

Approval ID: E488001

A 10 -12 - Ferrule



3200331

<https://www.phoenixcontact.com/gb/products/3200331>

Classifications

ECLASS

ECLASS-13.0	27400201
-------------	----------

ETIM

ETIM 9.0	EC000005
----------	----------

UNSPSC

UNSPSC 21.0	27121700
-------------	----------

A 10 -12 - Ferrule

3200331

<https://www.phoenixcontact.com/gb/products/3200331>



Environmental product compliance

EU RoHS

Fulfills EU RoHS substance requirements	Yes, No exemptions
---	--------------------

China RoHS

Environment friendly use period (EFUP)	EFUP-E
	No hazardous substances above the limits

EU REACH SVHC

REACH candidate substance (CAS No.)	No substance above 0.1 wt%
-------------------------------------	----------------------------

Phoenix Contact 2025 © - all rights reserved
<https://www.phoenixcontact.com>

PHOENIX CONTACT Ltd
Halesfield 13, Telford
Shropshire, TF7 4PG
01952 681700
info@phoenixcontact.co.uk