



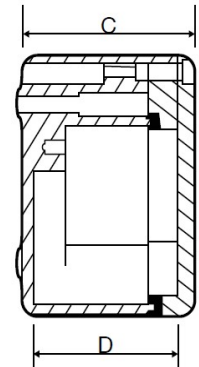
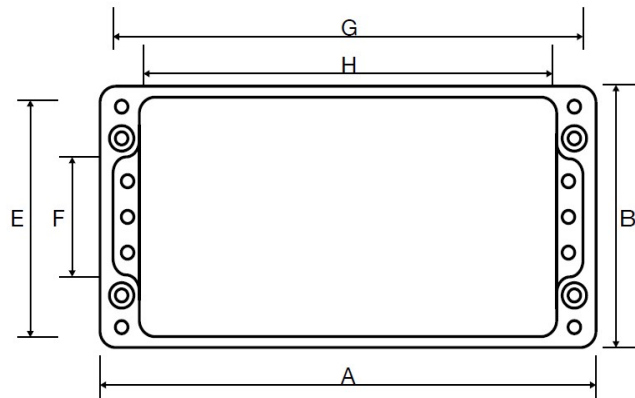
Stock, Pre-assembled.

IP66 Polyester (GRP) ATEX Junction Boxes for EX ia *Intrinsically Safe* applications.

CE-TEK's CEP black polyester (GRP) enclosures are available in 5 popular sizes and various terminal configurations to meet our customers' urgent "ATEX" Certified Ex / Hazardous Area requirements.

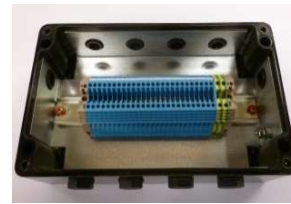
All pre-assembled enclosures comply with current EN 60079:2007 Ex ia requirements and are Rated to IP66 and T6 (T85°C) or T5 (100°C) temperature ratings

Ex Certified: - ATEX certificate number SIRA08ATEX3213



ATEX / EX ia

| RS Stock No. | A (mm) | B (mm) | C (mm) | D (mm) | E (mm) | F (mm) | G (mm) | H (mm) |
|-----------------|--------|--------|--------|--------|--------|--------|--------|--------|
| 184-0849 | 80 | 75 | 55 | 46 | 66 | 27 | 71 | 56 |
| 184-0850 | 122 | 120 | 90 | 81.5 | 111 | 66 | 113 | 90 |
| 184-0851 | 160 | 160 | 90 | 80 | 148 | 90 | 148 | 120 |
| 184-0852 | 260 | 160 | 90 | 80 | 148 | 90 | 90 | 220 |
| 184-0853 | 255 | 250 | 120 | 110 | 238 | 180 | 243 | 215 |



RS Stock No. 184-0849

RS Stock No. 184-0850

RS Stock No. 184-0851

RS Stock No. 184-0852

RS Stock No. 184-0853

Machined & Assembled with.

- Size 85 x 75 x 55mm
- 2xM20 Cable entries
- 5x2.5mm² Blue Terminals, numbered & fitted to TS15 DIN Rail
- 1x4mm² Earth Terminal
- Earth Continuity Plate
- M6 Int/Ext Earth Stud
- 2xCertified Stopping Plugs
- ATEX Certification Label
- Blue Intrinsically Safe Lid Label.

Machined & Assembled with.

- Size 122 x 120 x 90mm
- 4xM20 Cable entries
- 10x2.5mm² Blue Terminals, numbered & fitted to TS35 DIN Rail
- 2x4mm² Earth Terminal
- Earth Continuity Plate
- M6 Int/Ext Earth Stud
- 4xCertified Stopping Plugs
- ATEX Certification Label
- Blue Intrinsically Safe Lid Label.

Machined & Assembled with.

- Size 160 x 160 x 90mm
- 4xM20 Cable entries
- 15x2.5mm² Blue Terminals, numbered & fitted to TS35 DIN Rail
- 2x4mm² Earth Terminal
- Earth Continuity Plate
- M6 Int/Ext Earth Stud
- 4xCertified Stopping Plugs
- ATEX Certification Label
- Blue Intrinsically Safe Lid Label.

Machined & Assembled with.

- Size 260 x 160 x 90mm
- 10xM20 Cable entries
- 26x2.5mm² Blue Terminals, numbered & fitted to TS35 DIN Rail
- 2x4mm² Earth Terminal
- Earth Continuity Plate
- M6 Int/Ext Earth Stud
- 10xCertified Stopping Plugs
- ATEX Certification Label
- Blue Intrinsically Safe Lid Label.

Machined & Assembled with.

- Size 255 x 250 x 120mm
- 10xM20 & 2xM25 entries
- 40 (2x20) 2.5mm² Blue Terminals, numbered & fitted to T35 DIN Rail
- 4x4mm² Earth Terminal
- Earth Continuity Plate
- M6 Int/Ext Earth Stud
- 12xCertified Stopping Plugs
- ATEX Certification Label
- Blue Intrinsically Safe Lid Label.