

# MC 1100-SFP - FO converters



1330903

<https://www.phoenixcontact.com/in/products/1330903>

Please be informed that the data shown in this PDF document is generated from our online catalog. Please find the complete data in the user documentation. Our general terms of use for downloads are valid.

Gigabit fiber optic converter with SFP port for 1000Base-T, DIN rail mountable.



## Product description

The MC 1100- SFP gigabit media converter comes with one 10/100/1000 Mbps twisted-pair RJ45 port and one 100/1000 Mbps SFP port.

## Your advantages

- Auto MDI/MDI-X switch-over
- Data transfer rates of 1000 Mbps
- Link fault pass through (LFPT) function for easy connection monitoring

## Commercial data

|                                      |               |
|--------------------------------------|---------------|
| Item number                          | 1330903       |
| Packing unit                         | 1 pc          |
| Minimum order quantity               | 1 pc          |
| Sales key                            | DNC           |
| Product key                          | DNC315        |
| GTIN                                 | 4063151626549 |
| Weight per piece (including packing) | 181.2 g       |
| Weight per piece (excluding packing) | 110 g         |
| Customs tariff number                | 85176200      |
| Country of origin                    | CA            |

# MC 1100-SFP - FO converters

1330903

<https://www.phoenixcontact.com/in/products/1330903>



## Technical data

### Notes

#### Note on application

|                     |                         |
|---------------------|-------------------------|
| Note on application | Only for industrial use |
|---------------------|-------------------------|

#### Utilization restriction

|          |   |
|----------|---|
| EMC note | EMC: class A product, see manufacturer's declaration in the download area |
|----------|---|

### Product properties

|              |  |
|--------------|--|
| Product type | Media converter  |
| MTTF         | 78.9 Years (MIL-HDBK-217F standard, temperature 25°C, operating cycle 100%)                                |
|              | 654 Years ()   |
|              | 370.4 Years (Telcordia standard, temperature 25 °C, operating cycle 100 % (7 days a week, 24 hours a day)) |

### Electrical properties

#### Supply

|                             |                     |
|-----------------------------|---------------------|
| Supply voltage range        | 12 V DC ... 48 V DC |
| Nominal supply voltage      | 24 V DC             |
| Typical current consumption | 20 mA (24 V DC)     |
| Max. current consumption    | 170 mA              |

### Connection data

#### Supply

|   |                           |
|---|---------------------------|
| Connection method                       | Push-in spring connection |
| Conductor cross section, flexible       | 0.20 mm² ... 2.50 mm²     |
| Conductor cross section, rigid          | 0.20 mm² ... 2.50 mm²     |
| Conductor cross section, flexible [AWG] | 24 ... 12                 |
| Conductor cross section AWG             | 24 ... 12                 |
| Stripping length                        | 10.00 mm                  |

### Interfaces

|        |          |
|--------|----------|
| Signal | Ethernet |
|--------|----------|

#### Data: optical FO

|                     |                                  |
|---------------------|----------------------------------|
| Connection method   | SFP                              |
| Transmission medium | depending on the SFP module used |

#### Data: Ethernet interface, 10/100/1000Base-T(X) in accordance with IEEE 802.3

|                    |                     |
|--------------------|---------------------|
| Transmission speed | 10/100/1000 Mbps    |
| Connection method  | RJ45 jack, shielded |

# MC 1100-SFP - FO converters



1330903

<https://www.phoenixcontact.com/in/products/1330903>

|                        |                                |
|------------------------|--------------------------------|
| No. of channels        | 1                              |
| Transmission length    | 100 m (twisted pair, shielded) |
| Transmission medium    | Copper                         |
| Signal LEDs            | LNK/ACT, SPD, US               |
| Auto-negotiation modes | Auto                           |
| Link through           | Link fault pass through        |
| MDI-/MDI-X switchover  | Auto-MDI(X)                    |

## Dimensions

|        |         |
|--------|---------|
| Width  | 22.5 mm |
| Height | 123 mm  |
| Depth  | 90 mm   |

## Material specifications

|                  |                            |
|------------------|----------------------------|
| Housing material | Polyamide fiber reinforced |
|------------------|----------------------------|

## Mechanical tests

|  |                                    |
|--|------------------------------------|
| Vibration resistance in accordance with EN 60068-2-6/IEC 60068-2-6 | : 5g, 150 Hz, Criterion 3          |
| Shock in accordance with EN 60068-2-27/IEC 60068-2-27              | : 30g, 11 ms half-sine shock pulse |

## Environmental and real-life conditions

### Ambient conditions

|   |  |
|---|--|
| Degree of protection                    | IP30                                       |
| Ambient temperature (operation)         | -10 °C ... 60 °C                           |
| Ambient temperature (storage/transport) | -40 °C ... 85 °C                           |
| Altitude                                | ≤ 2000 m (in acc. with UL)                 |
| Permissible humidity (operation)        | 10 % ... 95 % (non-condensing)             |
| Shock                                   | 300 m/s <sup>2</sup> , 11 ms (IEC 60068-2) |

## Approvals

### Conformity/Approvals

|                  |                            |
|------------------|----------------------------|
| Conformance      | CE-compliant               |
| UL, USA / Canada | UL 61010-1, UL 61010-2-201 |

## EMC data

|                               |   |
|-------------------------------|---|
| Electromagnetic compatibility | Conformance with EMC Directive 2014/30/EU |
|-------------------------------|---|

### Electrostatic discharge

|                       |              |
|-----------------------|--------------|
| Standards/regulations | EN 61000-4-2 |
|-----------------------|--------------|

### Electrostatic discharge

|          |             |
|----------|-------------|
| Comments | Criterion B |
|----------|-------------|

### Electromagnetic HF field

# MC 1100-SFP - FO converters



1330903

<https://www.phoenixcontact.com/in/products/1330903>

|                            |              |
|----------------------------|--------------|
| Standards/regulations      | EN 61000-4-3 |
| Electromagnetic HF field   |              |
| Comments                   | Criterion A  |
| Fast transients (burst)    |              |
| Standards/regulations      | EN 61000-4-4 |
| Fast transients (burst)    |              |
| Comments                   | Criterion A  |
| Surge current load (surge) |              |
| Standards/regulations      | EN 61000-4-5 |
| Surge current load (surge) |              |
| Comments                   | Criterion B  |
| Conducted interference     |              |
| Standards/regulations      | EN 61000-4-6 |
| Conducted interference     |              |
| Comments                   | Criterion A  |
| Emitted interference       |              |
| Standards/regulations      | EN 55032     |

## Mounting

|                   |  |
|-------------------|--|
| Mounting type     | DIN rail: 35 mm                                    |
| Mounting position | On horizontal DIN rail NS 35 in acc. with EN 60715 |


# MC 1100-SFP - FO converters

1330903

<https://www.phoenixcontact.com/in/products/1330903>



## Approvals

 To download certificates, visit the product detail page: <https://www.phoenixcontact.com/in/products/1330903>



**cULus Listed**

Approval ID: E238705

# MC 1100-SFP - FO converters

1330903

<https://www.phoenixcontact.com/in/products/1330903>



## Classifications

### ECLASS

|             |          |
|-------------|----------|
| ECLASS-11.0 | 19170411 |
| ECLASS-12.0 | 19170411 |
| ECLASS-13.0 | 19170411 |

### ETIM

|          |          |
|----------|----------|
| ETIM 9.0 | EC001467 |
|----------|----------|

# MC 1100-SFP - FO converters



1330903

<https://www.phoenixcontact.com/in/products/1330903>

## Environmental product compliance

|   |  |
|---|--|
| EU RoHS                                 |  |
| Fulfills EU RoHS substance requirements | Yes, No exemptions                       |
| China RoHS                              |  |
| Environment friendly use period (EFUP)  | EFUP-E                                   |
|   | No hazardous substances above the limits |
| EU REACH SVHC                           |  |
| REACH candidate substance (CAS No.)     | No substance above 0.1 wt%               |

# MC 1100-SFP - FO converters



1330903

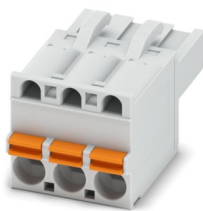
<https://www.phoenixcontact.com/in/products/1330903>

## Accessories

### FKCT 2,5/ 3-ST KMGY - PCB connector

1998263

<https://www.phoenixcontact.com/in/products/1998263>



PCB connector, nominal cross section: 2.5 mm<sup>2</sup>, color: light gray, nominal current: 12 A, rated voltage (III/2): 320 V, contact surface: Sn, contact connection type: Socket, number of potentials: 3, number of rows: 1, number of positions: 3, number of connections: 3, product range: FKCT 2,5/...-ST, pitch: 5 mm, connection method: Push-in spring connection, conductor/PCB connection direction: 0 °, locking clip: - Locking clip, plug-in system: COMBICON MSTB 2,5, locking: without, mounting method: without, type of packaging: packed in cardboard

---

### DT-LAN-CAT.6+ - Surge protection device

2881007

<https://www.phoenixcontact.com/in/products/2881007>



Surge protection in accordance with Class E<sub>A</sub> (CAT6<sub>A</sub>), for Gigabit Ethernet (up to 10 Gbps), token ring, FDDI/CDDI, ISDN, and DS1. Suitable for Power over Ethernet (PoE++ / 4PPoE) "Mode A" and "Mode B". RJ45 attachment plug with separate grounding cable and ground connection snap-on foot for NS 35 DIN rails.



# MC 1100-SFP - FO converters



1330903

<https://www.phoenixcontact.com/in/products/1330903>

## FL DIN-RAIL ADAPTER 22.5 - Mounting panel

1085485

<https://www.phoenixcontact.com/in/products/1085485>



The FL DIN-RAIL ADAPTER 22.5 is designed to allow products 22.5 mm wide to be mounted flush to a standard 35 mm DIN rail, in any orientation.

---

## FL PANEL ADAPTER 22.5 - Mounting panel

1085488

<https://www.phoenixcontact.com/in/products/1085488>



The FL PANEL ADAPTER 22.5 is designed to allow products 22.5 mm wide to be mounted flush to a panel, in any orientation.

# MC 1100-SFP - FO converters

1330903

<https://www.phoenixcontact.com/in/products/1330903>

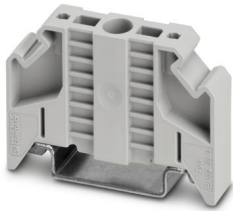


## E/NS 35 N - End bracket

0800886

<https://www.phoenixcontact.com/in/products/0800886>

End clamp, width: 9.5 mm, color: gray



---

## FL CAT5 PATCH 0,5 - Patch cable

2832263

<https://www.phoenixcontact.com/in/products/2832263>

Patch cable, CAT5, assembled, 0.5 m



# MC 1100-SFP - FO converters

1330903

<https://www.phoenixcontact.com/in/products/1330903>



## FL CAT5 PATCH 1,0 - Patch cable

2832276

<https://www.phoenixcontact.com/in/products/2832276>



Patch cable, CAT5, assembled, 1 m

---

## FL CAT5 PATCH 2,0 - Patch cable

2832289

<https://www.phoenixcontact.com/in/products/2832289>



Patch cable, CAT5, assembled, 2 m

# MC 1100-SFP - FO converters

1330903

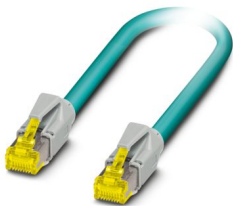
<https://www.phoenixcontact.com/in/products/1330903>



## NBC-R4AC-R4AC-IE8A/.../... - Patch cable

1411854

<https://www.phoenixcontact.com/in/products/1411854>



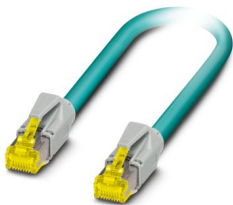
Patch cable, degree of protection: IP20, number of positions: 8, 10 Gbps, CAT6<sub>A</sub>, cable outlet: straight, Ethernet

---

## NBC-R4AC/10G-R4AC/10G-94F/2,0 - Patch cable

1408360

<https://www.phoenixcontact.com/in/products/1408360>



Patch cable, CAT6<sub>A</sub>, 4-pair, shielded, connection not crossed (line), assembled at both ends with RJ45/IP20 connectors, outer sheath material: PUR, length: 2.0 m

## MC 1100-SFP - FO converters

1330903

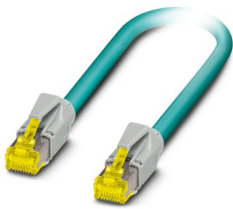
<https://www.phoenixcontact.com/in/products/1330903>



### NBC-R4AC/10G-R4AC/10G-94F/3,0 - Patch cable

1408365

<https://www.phoenixcontact.com/in/products/1408365>



Patch cable, CAT6<sub>A</sub>, 4-pair, shielded, connection not crossed (line), assembled at both ends with RJ45/IP20 connectors, outer sheath material: PUR, length: 3.0 m

---

### SZS 0,4X2,0 - Screwdriver

1205202

<https://www.phoenixcontact.com/in/products/1205202>



Micro screwdriver, bladed, size: 0.4 x 2.0 x 60 mm, 2-component grip, with non-slip grip and twist cap

# MC 1100-SFP - FO converters



1330903

<https://www.phoenixcontact.com/in/products/1330903>

## FL SFP SX - Media module

2891754

<https://www.phoenixcontact.com/in/products/2891754>



Gigabit SFP module for transmission up to 1 km with a wavelength of 850 nm.

---

## FL SFP FX SM - Media module

2891082

<https://www.phoenixcontact.com/in/products/2891082>



The small form-factor plug-in module provides a fiber optic interface with a data transmission speed of 100 Mbps with a wavelength of 1310 nm (long).

# MC 1100-SFP - FO converters



1330903

<https://www.phoenixcontact.com/in/products/1330903>

## FL SFP LX - Media module

2891767

<https://www.phoenixcontact.com/in/products/2891767>



Gigabit SFP module for transmission up to 30 km with a wavelength of 1310 nm.

---

## FL SFP FX - Media module

2891081

<https://www.phoenixcontact.com/in/products/2891081>



The small form-factor plug-in module provides a fiber optic interface with a data transmission speed of 100 Mbps with a wavelength of 1310 nm (long).

# MC 1100-SFP - FO converters



1330903

<https://www.phoenixcontact.com/in/products/1330903>

## FL SFP SX2 - Media module

2702397

<https://www.phoenixcontact.com/in/products/2702397>



Gigabit SFP module for transmission up to 2 km with a wavelength of 1310 nm.

---

## FL SFP LX10-B - Media module

1025401

<https://www.phoenixcontact.com/in/products/1025401>



Gigabit SFP module for transmission up to 10 km with a wavelength of 1310 nm.



# MC 1100-SFP - FO converters



1330903

<https://www.phoenixcontact.com/in/products/1330903>

## FL SFP LH - Media module

2989912

<https://www.phoenixcontact.com/in/products/2989912>



Gigabit SFP module for transmission up to 80 km with a wavelength of 1,550 nm.

---

## FL SFP LX40 - Media module

1113081

<https://www.phoenixcontact.com/in/products/1113081>



Gigabit SFP module for transmission up to 40 km with a wavelength of 1310 nm

# MC 1100-SFP - FO converters

1330903

<https://www.phoenixcontact.com/in/products/1330903>



## FL SFP FE WDM20-SET - Media module

2702439

<https://www.phoenixcontact.com/in/products/2702439>



Fast Ethernet SFP WDM set for transmission up to a maximum of 20 km on a single fiber with a wavelength of 1310/1550 nm.

---

## FL SFP WDM10-SET - Media module

2702442

<https://www.phoenixcontact.com/in/products/2702442>



Gigabit SFP WDM set for transmission up to a maximum of 10 km on a single fiber with a wavelength of 1310/1550 nm.

# MC 1100-SFP - FO converters

1330903

<https://www.phoenixcontact.com/in/products/1330903>



## FL DIN RA - DIN rail adapter

2891053

<https://www.phoenixcontact.com/in/products/2891053>

The FL DIN RA is installed in a standard, 19-inch rack (EIA-310-D, IEC 60297-3-100) to allow DIN rail mounted equipment to be rack mounted.



---

Phoenix Contact 2025 © - all rights reserved

<https://www.phoenixcontact.com>

PHOENIX CONTACT (I) Pvt. Ltd.

A-58/2, Okhla Industrial Area, Phase - II, New Delhi-110 020

+91.1275.71420

[info@phoenixcontact.co.in](mailto:info@phoenixcontact.co.in)