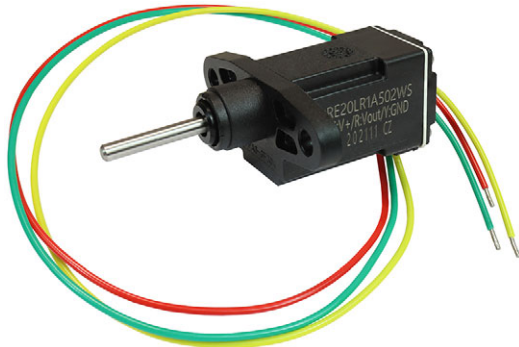


Precision Linear Position Sensor, Conductive Plastic, Up to 10 mm Stroke



FEATURES

- Measurement range up to 10 mm
- High accuracy $\pm 1\%$
- Long life 4M cycles
- Essentially infinite resolution
- Compact 19 mm x 37 mm body
- Custom on request
- Material categorization: for definitions of compliance please see www.vishay.com/doc?99912


RoHS
COMPLIANT

LINKS TO ADDITIONAL RESOURCES



3D Models



Related Documents

QUICK REFERENCE DATA

Sensor type	LINEAR, conductive plastic
Output type	Wires
Market appliance	Industrial
Dimensions	46 mm x 23.3 mm x 37 mm

ELECTRICAL SPECIFICATIONS

Theoretical electrical travel (TET)	Up to 10 mm
Actual electrical travel (AET)	AET = TET + 1 ± 0.5 mm
Independent linearity (over TET)	$\leq \pm 2\%$ to $\leq \pm 1\%$
Repeatability	$\leq 0.01\%$
Ohmic values (R_T)	From 500 Ω to 5 k Ω
Resistance tolerance at 20 °C	$\pm 20\%$
Wiper current	Recommended: a few μ A - 1 mA max. (continuous)
Load resistance	Minimum $10^3 \times R_T$
Output smoothness	$\leq 0.1\%$
Power rating	1 W at 25 °C down to 0 W at 125 °C
Insulation resistance	≥ 1000 M Ω , 500 V _{DC}
Dielectric strength	≥ 500 V _{RMS} , 50 Hz

MECHANICAL SPECIFICATIONS

Mechanical travel (MT)	12 ± 0.5 mm
Housing	Plastic
Operating force (over mechanical travel)	Unsealed version - without spring: 0.4 N max. / with spring: 1.5 N to 7 N Sealed version - without spring: 2.5 N max. / with spring: 2 N to 10 N
Shaft	Stainless steel / \varnothing 3.175 / threaded on request (specific "W7900" code must be used)
Termination	3 wires ETFE AWG 20, length: 300 mm / cable or connector on request
Wiper	Precious metal multifinger

PERFORMANCE AND ENVIRONMENTAL

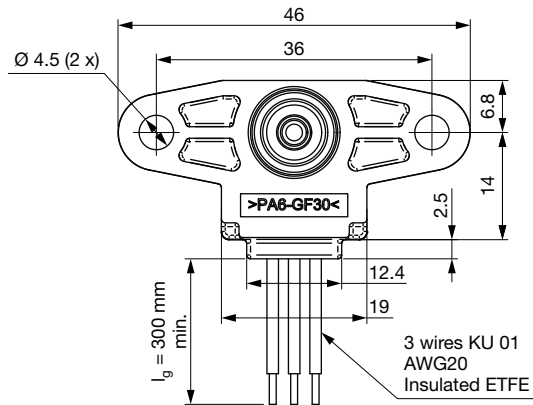
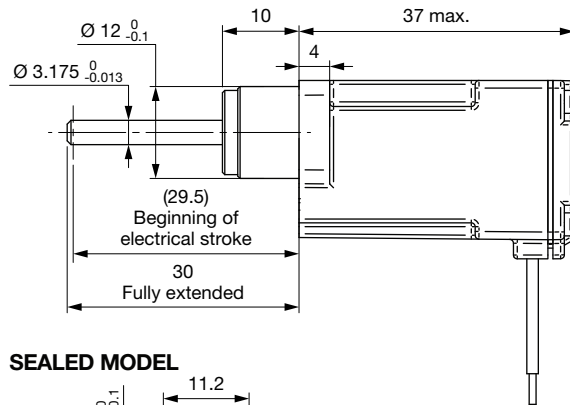
Operating life	4M cycles typical
Temperature range	Unsealed: -55 °C to +125 °C Sealed: -30 °C to +100 °C
Sine vibration on 3 axes	15 g - 10 Hz to 2000 Hz
Mechanical shocks on 3 axes	50 g - 11 ms - half sine
Acceptable operating speed	1 m/s
Sealing	S: sealed option (validated by immersion test according to Vishay laboratory conditions) / N: IP51

Note

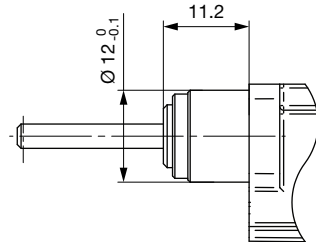
- Nothing stated herein shall be construed as a guarantee of quality or durability

DIMENSIONS in millimeters, general tolerance ± 0.5 mm

NON SEALED MODEL

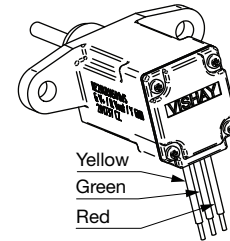
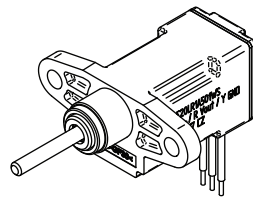
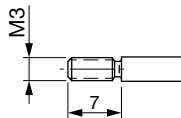


SEALED MODEL

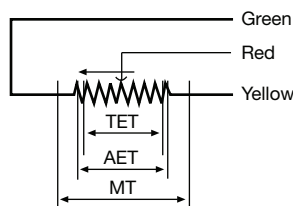


ELECTRICAL CONNECTIONS	
YELLOW	GND (-)
RED	SIGNAL
GREEN	V _{CC} (+)

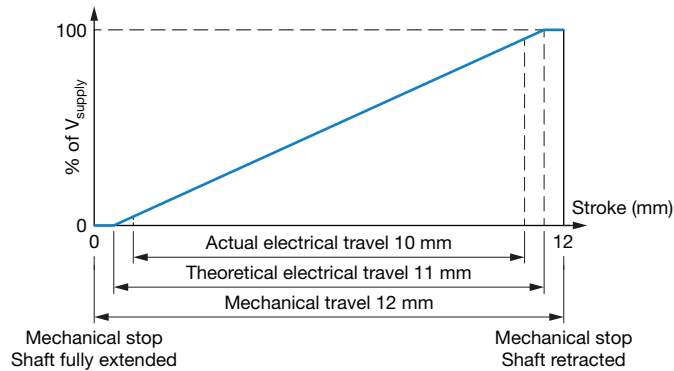
END SHAFT THREADED OPTION: P/N W7900



ELECTRICAL OUTPUT



TET = theoretical electrical travel
 AET = actual electrical travel
 MT = mechanical travel



SAP PART NUMBERING GUIDELINES

RE20LR	1	A	501	W	N	Wxxxx
MODEL	FEATURE	LINEARITY	OHMIC VALUE	OUTPUT	SEALING	SPECIAL
	1 = spring return 2 = no spring	X = ± 2 % A = ± 1 %	501 = 500 Ω 102 = 1000 Ω 202 = 2000 Ω 502 = 5000 Ω	W = wires Z = other ⁽¹⁾	N = not sealed S = sealed	W7900 = threaded shaft Other Wxxxx = special custom

Note

(1) For Z option a special "Wxxxx" will be assigned



Disclaimer

ALL PRODUCT, PRODUCT SPECIFICATIONS AND DATA ARE SUBJECT TO CHANGE WITHOUT NOTICE TO IMPROVE RELIABILITY, FUNCTION OR DESIGN OR OTHERWISE.

Vishay Intertechnology, Inc., its affiliates, agents, and employees, and all persons acting on its or their behalf (collectively, "Vishay"), disclaim any and all liability for any errors, inaccuracies or incompleteness contained in any datasheet or in any other disclosure relating to any product.

Vishay makes no warranty, representation or guarantee regarding the suitability of the products for any particular purpose or the continuing production of any product. To the maximum extent permitted by applicable law, Vishay disclaims (i) any and all liability arising out of the application or use of any product, (ii) any and all liability, including without limitation special, consequential or incidental damages, and (iii) any and all implied warranties, including warranties of fitness for particular purpose, non-infringement and merchantability.

Statements regarding the suitability of products for certain types of applications are based on Vishay's knowledge of typical requirements that are often placed on Vishay products in generic applications. Such statements are not binding statements about the suitability of products for a particular application. It is the customer's responsibility to validate that a particular product with the properties described in the product specification is suitable for use in a particular application. Parameters provided in datasheets and / or specifications may vary in different applications and performance may vary over time. All operating parameters, including typical parameters, must be validated for each customer application by the customer's technical experts. Product specifications do not expand or otherwise modify Vishay's terms and conditions of purchase, including but not limited to the warranty expressed therein.

Hyperlinks included in this datasheet may direct users to third-party websites. These links are provided as a convenience and for informational purposes only. Inclusion of these hyperlinks does not constitute an endorsement or an approval by Vishay of any of the products, services or opinions of the corporation, organization or individual associated with the third-party website. Vishay disclaims any and all liability and bears no responsibility for the accuracy, legality or content of the third-party website or for that of subsequent links.

Vishay products are not designed for use in life-saving or life-sustaining applications or any application in which the failure of the Vishay product could result in personal injury or death unless specifically qualified in writing by Vishay. Customers using or selling Vishay products not expressly indicated for use in such applications do so at their own risk. Please contact authorized Vishay personnel to obtain written terms and conditions regarding products designed for such applications.

No license, express or implied, by estoppel or otherwise, to any intellectual property rights is granted by this document or by any conduct of Vishay. Product names and markings noted herein may be trademarks of their respective owners.