

Features

- Compact structure
- Versions with anti-rotation plate
- Working temperature $-20\text{ }^{\circ}\text{C} \div +70\text{ }^{\circ}\text{C}$
- Working Pressure Range 1-10 bar
- Version without magnet

RS PRO Pneumatic Piston Rod Cylinder

RS PRO 0360802



RS PRO is the own brand of RS. The RS PRO Seal of Approval is your assurance of professional quality, a guarantee that every part is rigorously tested, inspected, and audited against demanding standards. Making RS PRO the Smart Choice for our customers.

Product Description

- * JIS standard is implemented.
- * The internal diameter of the body is treated with rolling followed by the treatment of hard anodizing, forming an excellent abrasion resistance and durability.
- * Compact structure can effectively save installation space.
- * There are magnetic switch slots around the cylinder body, which is convenient to install sensors

General Specifications

Manufacturer Series	RS PRO DSK AR
Action	Double Acting

Mechanical Specifications

Stroke	See table below for more details
Bore	See table below for more details
Length	See table below for more details
Piston Rod Thread Gender	Female
Maximum Operating Pressure	10 bar
Working Pressure Range	1-10 bar
Working Temperature	-20 °C ÷ +70 °C
Absolute Maximum Pressure	15 bar
Cushioning Type	Elastomer
Pneumatic Connection	See table below for more details
Diameter	See table below for more details
Port Connection	See table below for more details
Width	See table below for more details
Height	See table below for more details
Dimensions	See table below for more details

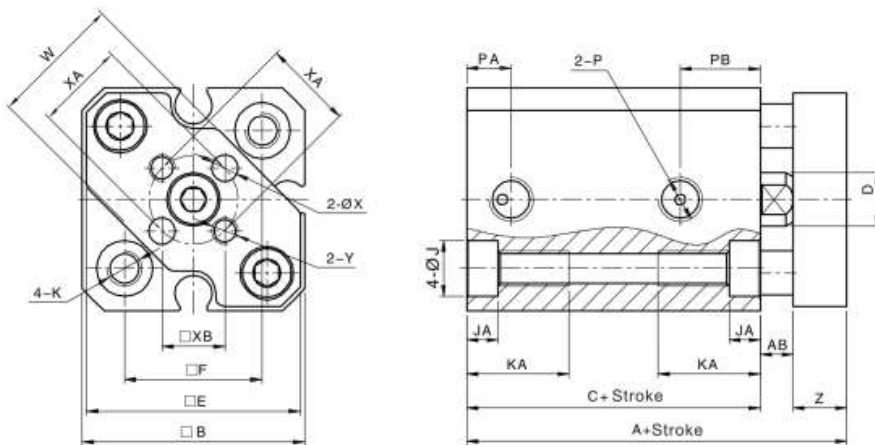
Approvals

Declarations	MFR Declaration of Conformity
Standards Met	JIS standard

Products within this series

Stock No.	Bore (mm)	Stroke (mm)	Length (mm)	Height (mm)	Width (mm)	Diameter (mm)	Pneumatic Connect. (Port Connection)
0360802	20	50	101	36	36	20	M5

Drawings / Dimensions / Internal Structure / Materials



Stock No.	Bore / Sign	A		C		AB	B	D	E	F	J	JA	K
		Standard	With magnet	Standard	With magnet								
0360802	20	32	44	19.5	31.5	4.5	36	10	35	25.5	9	7	M6x1.0 Throgh hole: Ø5.2

Stock No.	KA	P	PA	PB		W	X	XA	XB	Y	Z
				Standard	With magnet						
0360802	18	M5x0.8	5.5	9	9	26	4	17	12	M4x0.7	8