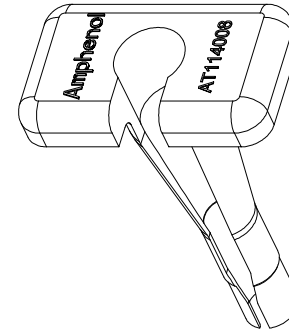
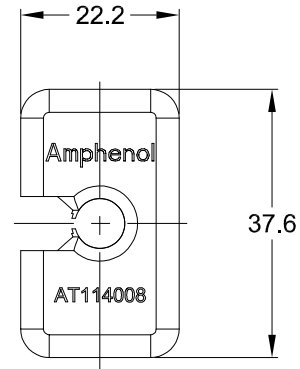
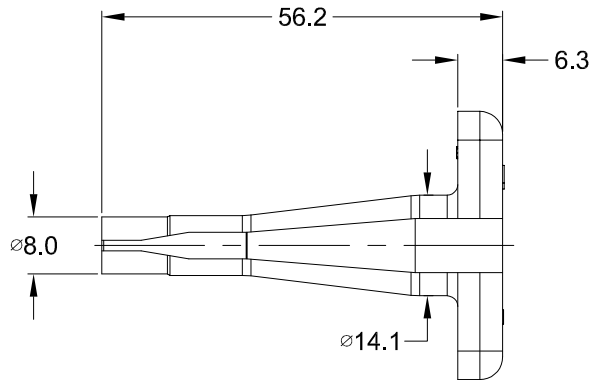


REVISIONS					
REV	ECO	DESCRIPTION	DATE	BY	APPR
01		PRELIMINARY DRAWING	18SEP17	SULLEN	TOMMY



NOTES: UNLESS OTHERWISE SPECIFIED

1. MATERIAL: THERMOPLASTIC; COLOR: GREEN
2. RoHS COMPLIANT
3. USE WITH AHDP SERIES
4. ALL DIMENSIONS ARE FOR REFERENCE USE ONLY.

	AT114008			
	PART NUMBER		DESCRIPTION	ITEM
QUANTITY	MATERIALS LIST			
<div>UNLESS OTHERWISE SPECIFIED</div> <div>1) All dmlensons are In metric(mm). 2) Tolerances are as follows: 1 PL DEC ±0.30 2 PL DEC ±0.15 3 PL DEC ±0.08</div> <div>3) Note reference = <div>X</div></div>		<div>SIGNATURES</div> <div>DRAWN: SULLEN,ZHANG</div> <div>CHECKED: ORION,LI</div> <div>ENGINEER:</div> <div>APPROVAL: TOMMY,XIE</div> <div>CUSTOMER:</div> <div>THIS DRAWING IS SUPPLIED FOR INFORMATION ONLY. DESIGN FEATURES, SPECIFICATIONS AND PERFORMANCE DATA SHOWN HEREON ARE THE PROPERTY OF THE AMPHENOL CORPORATION. NO RIGHTS OF REPRODUCTION ARE IMPLIED. ALL DIMENSIONS ARE SUBJECT TO NORMAL MANUFACTURING VARIATIONS.</div>	<div>DATE</div> <div>18SEP17</div> <div>18SEP17</div> <div></div> <div>18SEP17</div>	<div>Amphenol</div> <div>Sine Systems - <a href="http://www.amphenol-sine.com">www.amphenol-sine.com</a> 44724 Morley Drive Clinton Township, MI 48036</div>
MATERIAL SPECIFICATIONS:		PROBE TOOL, EXTRACTION SIZE 8		
PROCESS SPECIFICATIONS:				
NEXT ASSY:		SIZE	TYPE	DWG NO:
		A	C-	AT114008
		SCALE:	NONE	REVISION
				01
		SHEET 1 OF 1		