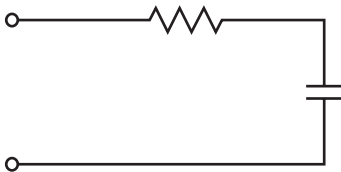


Fax Back Document #1204

XEB SERIES

- Flexible wire leads with mounting tabs on some models
- Our best performance series with broad applications in motor and controls
- Large product selection range with ¼, ½, and 1 watt non-inductive, high pulse resistors

Safety Agency : Standard	File No.
UL : UL-1414	E47474
CSA : CSA C22.2 No.0, No.1	LR37404/LR68886
VDE : VDE0565-1	10529-4670-1002
SEMKO : SS443-04-14	8705137
DEMKO : Heavy Current Regulations Section 21 and IEC384-14	88929EC
NEMKO : NEMKO 132/85	E40433/E40434
EL : E384/14-82	116910-01, -02
SEV : SEV1055	87.1 01343.02



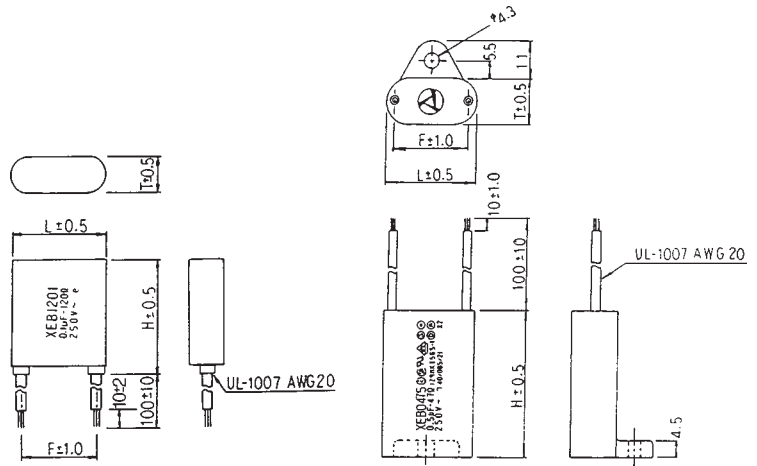
ELECTRICAL SPECIFICATIONS

Operating temp. range : -40 ~ + 85°C

Safety Standard	Class	Model number	Resistance $\Omega \pm 30\%$	Capacitance C_x ($\mu F \pm 20\%$)	Pulse condition (Max)				Peak pulse voltage	Test voltage JISC5102	Insulation resistance
					Peak to Peak (P-P)	Pulse width	Repetitive frequency	Pulse width (sec) x Frequency(Hz)			
	X2	XEB01001	10(¼W)	0.01	800V max.	50msec max.	120Hz max.	4.5max	1200V max.	Line to Line 15,000M Ω min.	
		XEB04701	47(¼W)					3.0max			
		XEB12001	120(¼W)					1.5max			
		XEB22001	220(¼W)					0.8max			
		XEB47001	470(¼W)					0.45max			
		XEB010033	10(¼W)					0.033			
		XEB047033	47(¼W)	2.0max							
		XEB120033	120(¼W)	1.0max							
		XEB220033	220(¼W)	0.5max							
		XEB470033	470(¼W)	0.25max							
		XEB0101	10(½W)	0.1				1.5max			
		XEB0471	47(½W)					1.0max			
		XEB1201	120(½W)					0.45max			
		XEB2201	220(½W)					0.2max			
		XEB4701	470(½W)	0.1max							
		XEB0102	10(½W)	0.2				0.5max			
		XEB0472	47(½W)					0.3max			
		XEB1202	120(½W)					0.15max			
		XEB2202	220(½W)					0.08max			
		XEB0103	10(1W)	0.3				0.2max			
XEB0473	47(1W)	0.1max									
XEB1203	120(1W)	0.05max									
XEB2203	220(1W)	0.02max									
XEB0105	10(1W)	0.5	0.18max								
XEB0475	47(1W)		0.05max								
XEB01010	10(1W)		0.15max								
										Line to Case 2000 Vrms 50/60Hz 60 sec.	Line to Case 100,000M Ω min. (at 20°C 500VDC)

MECHANICAL SPECIFICATIONS:

Case: Standoffs provided for improved cleanability
 Case Material: Polybutylene Terephthalate (FR-PBT)
 UL-94 Flame Class V-O
 Potting Material: UL-94 Flame Class V-O
 Leads: Tinned Stranded Copper Wire
 Polyvinylchloride (PVC) Insulation
 Soldered Capacitor Element
 Capacitor: Double Wound, Oil Impregnated,
 Metallized Polyester Film



XEB...01 ~ XEB...2

XEB...3 ~ XEB...10

All Dimensions in MM

MECHANICAL DIMENSIONS

Other lead lengths available—consult factory.

Safety Standard	Class	Model No.	Resistance $\Omega \pm 30\%$	Capacitance $(\mu F \pm 20\%)$	Dimensions						
					L	H	T	F			
	X2	XEB01001	10(¼W)	0.01	16.0	20.0	8.0	12.5			
		XEB04701	47(¼W)								
		XEB12001	120(¼W)								
		XEB22001	220(¼W)								
		XEB47001	470(¼W)								
		XEB010033	10(¼W)						0.033		
		XEB047033	47(¼W)								
		XEB120033	120(¼W)								
		XEB220033	220(¼W)								
		XEB470033	470(¼W)								
		XEB0101	10(½W)	0.1	19.0	25.0	8.5	15.0			
		XEB0471	47(½W)								
		XEB1201	120(½W)								
		XEB2201	220(½W)								
		XEB4701	470(½W)								
		XEB0102	10(½W)						0.2	21.5	30.0
		XEB0472	47(½W)								
		XEB1202	120(½W)								
		XEB2202	220(½W)								
		XEB0103	10(1W)	0.3	30.0	39.0	16.0	26.0			
XEB0473	47(1W)										
XEB1203	120(1W)										
XEB2203	220(1W)										
XEB0105	10(1W)	0.5									
XEB0475	47(1W)										
XEB01010	10(1W)	1.0	37.0	48.0	22.0	33.0					