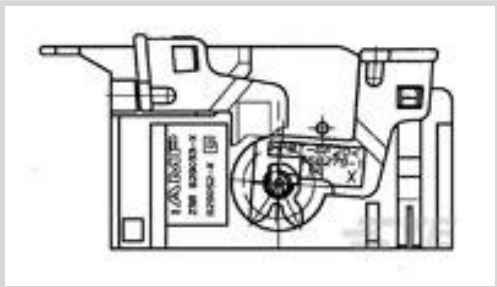




Connectors > Automotive Connectors > Automotive Connector Accessories > Automotive Connector Caps & Covers



Protection & Strain Relief Accessory Type: **Cover Assembly**
Strain Relief: **With**
Primary Product Color: **Gray**
Primary Product Material: **PBT GF**
Number of Positions: **32**

Features

Packaging Features

Packaging Method	Carton
Packaging Quantity	500

Configuration Features

Compatible With Connector Code	A
Number of Positions	32

Product Type Features

Protection & Strain Relief Accessory Type	Cover Assembly
---	----------------

Mechanical Attachment

Strain Relief	With
---------------	------

Body Features

Primary Product Color	Gray
Primary Product Material	PBT GF

Usage Conditions

Operating Temperature (Max)	85 °C[185 °F]
Operating Temperature Range	-40 – 85 °C[-40 – 185 °F]

Other

EU RoHS Compliance	Compliant
EU ELV Compliance	Compliant



Product Compliance

For compliance documentation, visit the product page on TE.com>

EU RoHS Directive 2011/65/EU	Compliant
EU ELV Directive 2000/53/EC	Compliant
China RoHS 2 Directive MIIT Order No 32, 2016	No Restricted Materials Above Threshold
EU REACH Regulation (EC) No. 1907/2006	Current ECHA Candidate List: JUNE 2024 (241) Candidate List Declared Against: JUNE 2024 (241) Does not contain REACH SVHC
Halogen Content	Low Halogen - Br, Cl, F, I < 900 ppm per homogenous material. Also BFR/CFR/PVC Free
Solder Process Capability	Not applicable for solder process capability

Product Compliance Disclaimer

This information is provided based on reasonable inquiry of our suppliers and represents our current actual knowledge based on the information they provided. This information is subject to change. The part numbers that TE has identified as EU RoHS compliant have a maximum concentration of 0.1% by weight in homogenous materials for lead, hexavalent chromium, mercury, PBB, PBDE, DBP, BBP, DEHP, DIBP, and 0.01% for cadmium, or qualify for an exemption to these limits as defined in the Annexes of Directive 2011/65/EU (RoHS2). Finished electrical and electronic equipment products will be CE marked as required by Directive 2011/65/EU. Components may not be CE marked. Additionally, the part numbers that TE has identified as EU ELV compliant have a maximum concentration of 0.1% by weight in homogenous materials for lead, hexavalent chromium, and mercury, and 0.01% for cadmium, or qualify for an exemption to these limits as defined in the Annexes of Directive 2000/53/EC (ELV). Regarding the REACH Regulation, the information TE provides on SVHC in articles for this part number is based on the latest European Chemicals Agency (ECHA) 'Guidance on requirements for substances in articles' posted at this URL: <https://echa.europa.eu/guidance-documents/guidance-on-reach>

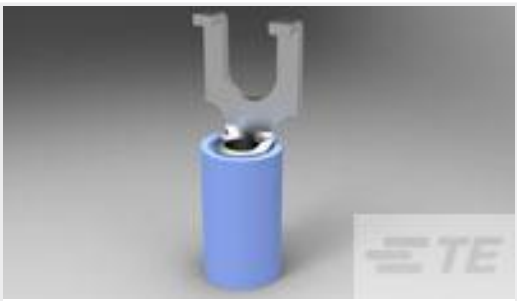
Compatible Parts

TE Part # 929052-1
MQS ABDECKKAPPE 32P

TE Part # CAT-SIGH262
Signal Header

TE Part # 968265-1
32POS MQS REC

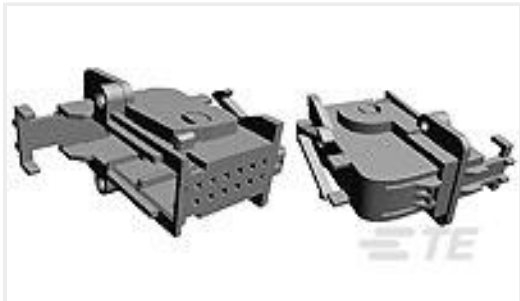
Customers Also Bought



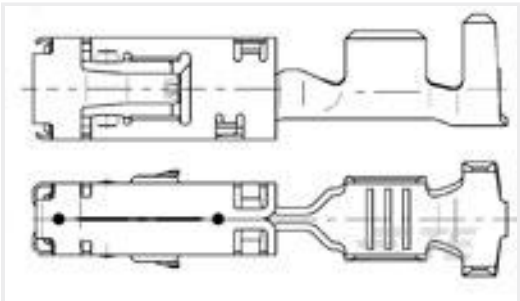
TE Part #2-320862-1
TERMINAL,PIDG SPD FLG 16-14 8



TE Part #1571563-8
FSM4JSMLTR=TACT SWITCH,SMT, T&R



TE Part #929051-1
MQS ABDEKA M.HEB12P



TE Part #967543-2
SENS FLA-KONT 2,8



TE Part #1-2141857-3
AMP MCP 2.8, CONTACT



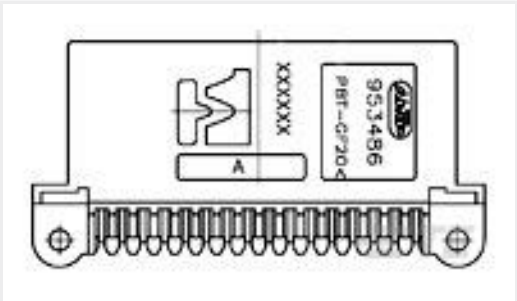
TE Part #3-2176512-3
CJP 800W 1K0 5% Lead



TE Part #1534789-1
ADAPTER 90DEG 4/7POS



TE Part #1-1355397-3
4POS MQS REC COD A



TE Part #953486-1
32pos MQS .63 header 90deg



TE Part #279328-1
MOTOR TERMINAL II

Documents

Product Drawings
MQS ABDEKA M.HEB32P

English

CAD Files

3D PDF

3D

Customer View Model

ENG_CVM_CVM_929053-1_C.2d_dxf.zip

English

Customer View Model

ENG_CVM_CVM_929053-1_C.3d_igs.zip

English

Customer View Model

ENG_CVM_CVM_929053-1_C.3d_stp.zip

English

By downloading the CAD file I accept and agree to the Terms and Conditions of use.

Product Specifications



Application Specification

English