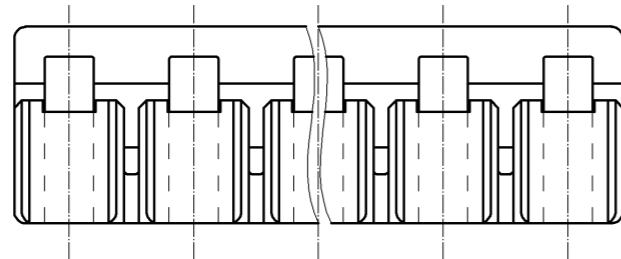
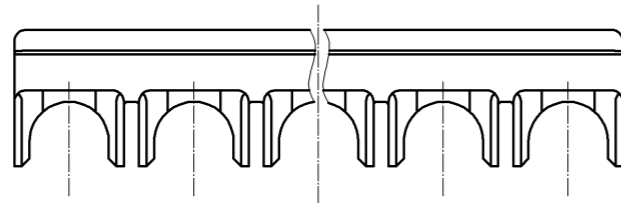
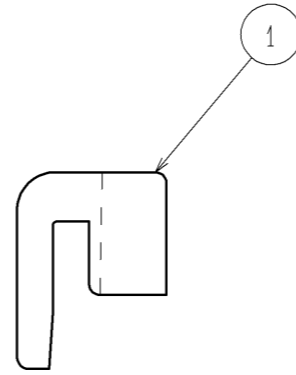
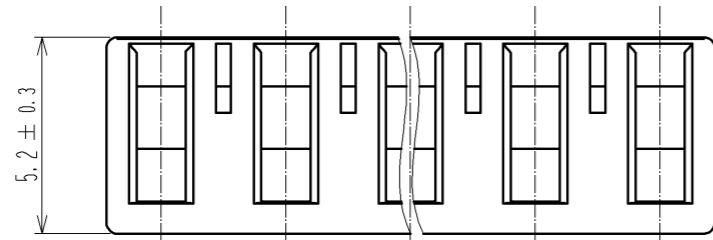
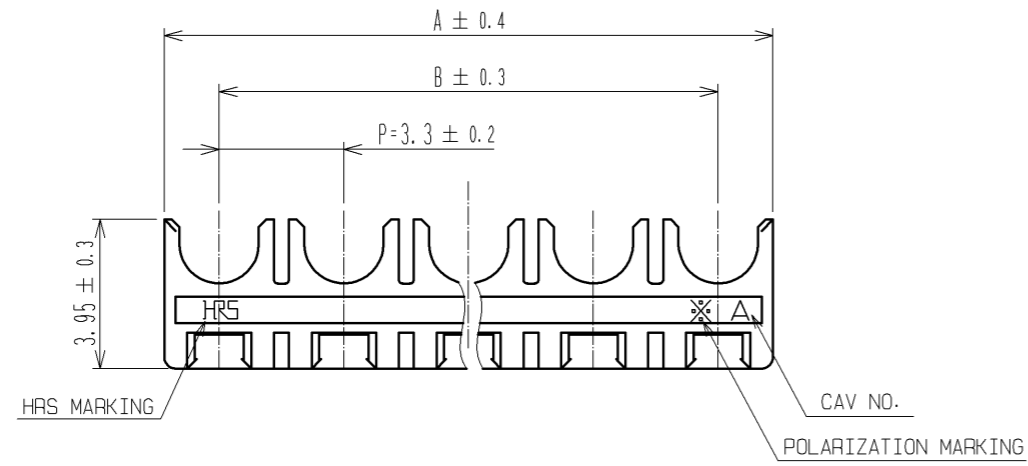


APPLICABLE STANDARD					
RATING	OPERATING TEMPERATURE RANGE	-35°C TO +85°C (NOTE 1)	STORAGE TEMPERATURE RANGE	-10°C TO +60°C (NOTE 3)	
	OPERATING HUMIDITY RANGE	40% TO 80% (NOTE 2)	STORAGE HUMIDITY RANGE	40% TO 70% (NOTE 3)	
	VOLTAGE	500V AC/DC	APPLICABLE CONNECTOR	DF33C-*S-3.3C	
	CURRENT	AWG 20 AWG 22	5A		
SPECIFICATIONS					
ITEM	TEST METHOD		REQUIREMENTS	QT	AT
CONSTRUCTION					
GENERAL EXAMINATION	VISUALLY AND BY MEASURING INSTRUMENT.		ACCORDING TO DRAWING.	X	X
MARKING	CONFIRMED VISUALLY.			X	X
ELECTRIC CHARACTERISTICS					
INSULATION RESISTANCE	500V DC.		1000MΩ MIN.	X	-
VOLTAGE PROOF	1500V AC FOR 1 min.		NO FLASHOVER OR BREAKDOWN.	X	-
MECHANICAL CHARACTERISTICS					
MECHANICAL OPERATION	30 TIMES INSERTIONS AND EXTRACTIONS.		NO DAMAGE, CRACK OR LOOSENESS OF PARTS.	X	-
VIBRATION	FREQUENCY 10 TO 55 Hz, SINGLE AMPLITUDE 0.75 mm, AT 10 CYCLE FOR EACH, FOR 3 DIRECTIONS.		NO DAMAGE, CRACK OR LOOSENESS OF PARTS.	X	-
SHOCK	490 m/s ² DURATION OF PULSE 11 ms AT 3 TIMES FOR 3 DIRECTIONS.			X	-
ENVIRONMENTAL CHARACTERISTICS					
DAMP HEAT (STEADY STATE)	EXPOSED AT 40 ± 2 °C, 90 TO 95 %, 96 h.		① INSULATION RESISTANCE: 500MΩ MIN. ② NO DAMAGE, CRACK OR LOOSENESS OF PARTS.	X	-
RAPID CHANGE OF TEMPERATURE	TEMPERATURE -55→+85°C TIME 30→30min. UNDER 5 CYCLES. THE TRANSFERRING TIME OF THE TANK IS 2~3 min.		① INSULATION RESISTANCE: 1000MΩ MIN. ② NO DAMAGE, CRACK OR LOOSENESS OF PARTS.	X	-
REMARKS					
NOTE 1:INCLUDING THE TEMPERATURE RISE BY CURRENT.					
NOTE 2:NO CONDENSING					
NOTE 3:APPLY TO THE CONDITION OF LONGTERM STORAGE FOR UNUSED PRODUCTS BEFORE PCB ON BOARD, AFTER PCB BOARD, OPERATING TEMPERATURE AND HUMIDITY RANGE IS APPLIED FOR INTERIM STORAGE DURING TRANSPORTATION.					
	COUNT	DESCRIPTION OF REVISIONS	DESIGNED	CHECKED	DATE
			APPROVED	KI. AKIYAMA	13.12.18
			CHECKED	HK. UMEHARA	13.12.18
			DESIGNED	HT. SATO	13.12.18
			DRAWN	MI. SAKIMURA	13.12.18
Unless otherwise specified, refer to JIS C 5402.					
Note QT:Qualification Test AT:Assurance Test X:Applicable Test			DRAWING NO.	ELC4-355980-00	
	SPECIFICATION SHEET		PART NO.	DF33C-*RS-3.3	
	HIROSE ELECTRIC CO., LTD.		CODE NO.	CL676-	1/1



PART No.	CODE No.	NUMBER OF CONTACT	A	B
DF33C- 2RS-3.3	CL676-1141-6-00	2	6.2	-
DF33C- 3RS-3.3	CL676-1142-9-00	3	9.5	6.6
DF33C- 4RS-3.3	CL676-1143-1-00	4	12.8	9.9
DF33C- 5RS-3.3	CL676-1144-4-00	5	16.1	13.2
DF33C- 6RS-3.3	CL676-1145-7-00	6	19.4	16.5

NOTE 1 : 100 CONNECTORS ARE IN ONE PACK.

1	PBT	BLACK, UL94V-0			
NO.	MATERIAL	FINISH . REMARKS	NO.	MATERIAL	FINISH . REMARKS
UNITS mm		SCALE 5 : 1		DESCRIPTION OF REVISIONS	DESIGNED
	HIROSE ELECTRIC CO., LTD.	APPROVED : KI. AKIYAMA	13.12.18	DRAWING NO.	EDC3-355980-00
		CHECKED : HK. UMEHARA	13.12.18	PART NO.	DF33C-*RS-3.3
		DESIGNED : HT. SATO	13.12.18	CODE NO.	CL676-
		DRAWN : MI. SAKIMURA	13.12.17		