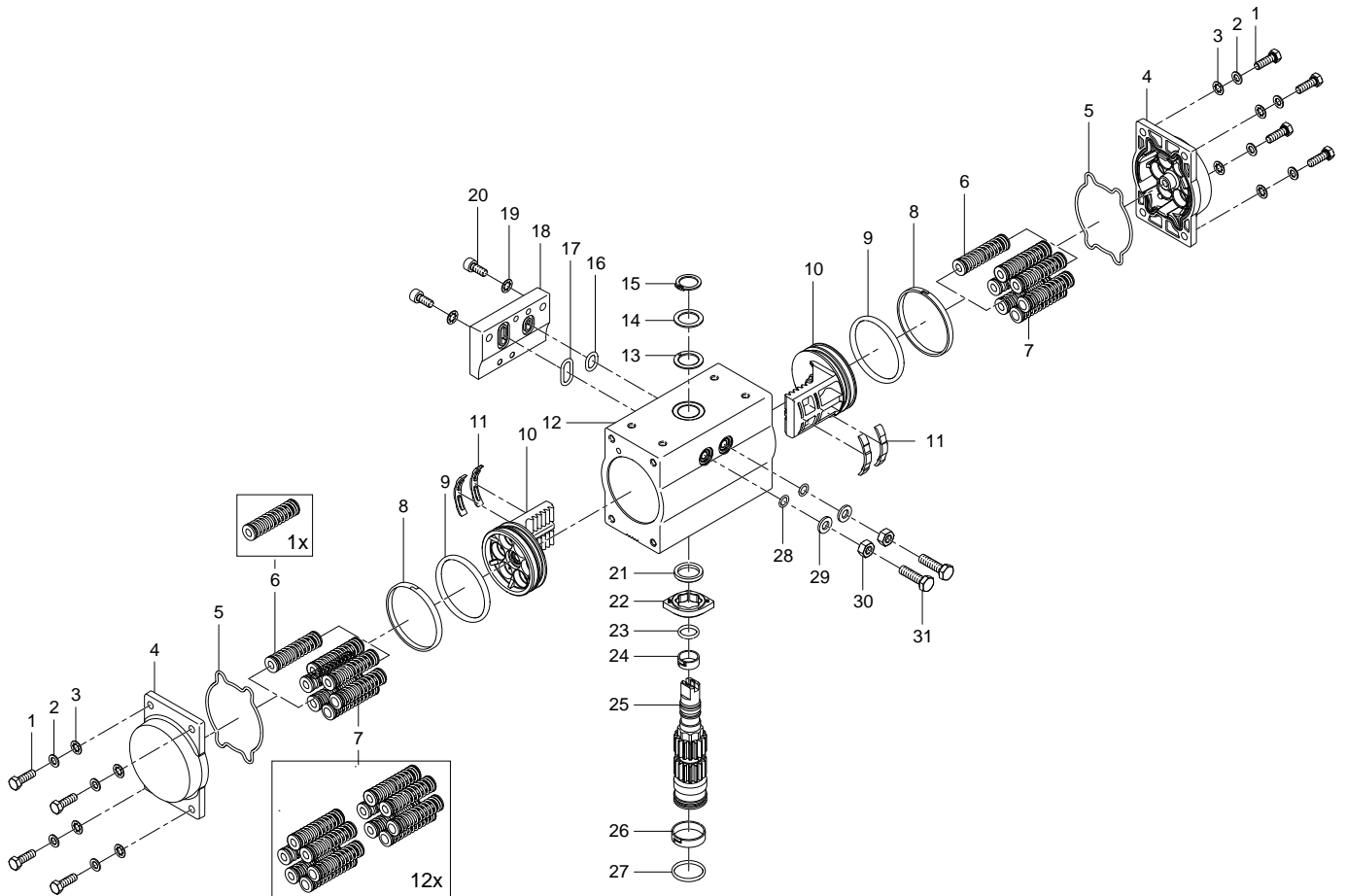


8048014 DFPD-20-RP-90-RS30-F05 Semi-rotary drive - Series: All



8048014 DFPD-20-RP-90-RS30-F05 Semi-rotary drive - Series: All

Pos.	Part no.	Type	Note	Qty.	Unit
A	8190149	DFPD-20-.. REV1 Set of wearing parts	Spare parts: 3, 5, 8, 9, 11, 13, 15, 16, 17, 19, 21, 23, 24, 26, 27, 28, 29, 30, 31 ▶ Replacing the wearing parts	1	PC
1		ISO 4017-M5X16-A2-70 Hexagon head screw	Not available Tightening torque 7 Nm / 5.2 lbf ft	8	PC
2		5,2X9X1-1.4301 Ring	Not available	8	PC
3		DIN 6797-J-5,3-A2-70 Toothed disc	Not available separately, see position 6+7+999	8	PC
4		DFPD-20-S End cap	Not available	2	PC
5		DFPD-20 Moulded seal	Not available separately, see position A Lubricate with SYNTHY POLYMER 402/2 during assembly	2	PC
6	8061426	DFPD-20-.S-1-.. Spring module		1	PC
7	8060123	DFPD-20-.S-12-.. Spring module		1	PC
8		DFPD-20 Slip ring	Not available separately, see position A ▶ Repair note: Slip_ring	2	PC
9		43X3,5-N-NBR70 O-ring	Not available separately, see position A Lubricate with SYNTHY POLYMER 402/2 during assembly	2	PC
10		DFPD-20-90 Piston	Not available Lubricate with SYNTHY POLYMER 402/2 during assembly	2	PC
11		DFPD-20 Slide element	Not available separately, see position A	4	PC
12		DFPD-20-90-F04-AN Housing	Not available Lubricate with SYNTHY POLYMER 402/2 during assembly	1	PC
13		DFPD-20 Slip ring	Not available separately, see position A	1	PC
14		DIN 988-14X20X1-A2 Shim	Not available	1	PC
15		DIN 471-14X1-A2 Retaining ring	Not available separately, see position A	1	PC
16		B-9X2-N-NBR70 O-ring ISO3601	Not available separately, see position A Lubricate with SYNTHY POLYMER 402/2 during assembly	1	PC
17		B-13X2-N-NBR70 O-ring ISO3601	Not available separately, see position A Lubricate with SYNTHY POLYMER 402/2 during assembly	1	PC
18		DFPD-20-AN Sub-base	Not available	1	PC
19		J-5,1-A2-70 Toothed disc	Not available separately, see position A	2	PC
20		ISO 4762-M5X12-A2-70 Socket head screw	Not available Tightening torque 7 Nm / 5.2 lbf ft	2	PC
21		DFPD-20 Slip ring	Not available separately, see position A	1	PC
22		DFPD-20-90 Cam	Not available	1	PC
23		B-11X2-N-NBR70 O-ring ISO3601	Not available separately, see position A Lubricate with SYNTHY POLYMER 402/2 during assembly	1	PC
24		DFPD-20 Slip ring	Not available separately, see position A ▶ Repair note: Slip_ring	1	PC
25		DFPD-20-KT11 Shaft	Not available Lubricate with SYNTHY POLYMER 402/2 during assembly	1	PC
26		DFPD-20 Slip ring	Not available separately, see position A ▶ Repair note: Slip_ring	1	PC

Pos.	Part no.	Type	Note	Qty.	Unit
27		B-19X2-N-NBR70 O-ring ISO3601	Not available separately, see position A Lubricate with SYNTHY POLYMER 402/2 during assembly	1	PC
28		B-5,28X1,78-N-NBR70 O-ring ISO3601	Not available separately, see position A	2	PC
29		6,2X12X1,5-1.4301 Ring	Not available separately, see position A	2	PC
30		DIN 934-M6-A2-70 Hex nut	Not available separately, see position A Tightening torque 10.5 Nm / 7.7 lbf ft	2	PC
31		DFPD-20- adjusting screw	Not available separately, see position A	2	PC