

2854254

<https://www.phoenixcontact.com/in/products/2854254>

Please be informed that the data shown in this PDF document is generated from our online catalog. Please find the complete data in the user documentation. Our general terms of use for downloads are valid.



DIN rail housing, Lower housing part with metal foot catch, with FE contact, tall design, with vents, width: 22.6 mm, height: 99 mm, depth: 107.3 mm, color: black (similar RAL 9005), cross connection: integrated bus connector, number of positions cross connector: 10, Bus connector: 10 parallel contacts

Your advantages

- Tool-free mounting
- Available in overall widths from 12.5 mm ... 90 mm, modular extension is possible
- Flammability rating V0 in accordance with UL 94
- Variety of connection technology
- Can be mounted on the DIN rail
- With integrated or DIN-rail-mountable bus connector as an option

Commercial data

Item number	2854254
Packing unit	10 pc
Minimum order quantity	10 pc
Sales key	ACH
Product key	ACHAAB
GTIN	4017918461362
Weight per piece (including packing)	65.24 g
Weight per piece (excluding packing)	56.25 g
Customs tariff number	85369010
Country of origin	DE

# ME 22,5 UT/FE BUS/10 BK - Mounting base housing



2854254

<https://www.phoenixcontact.com/in/products/2854254>

## Technical data

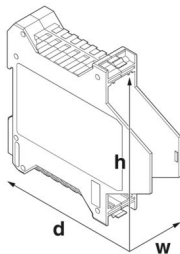
### Notes

Assembly note	Please observe the application note in the download area.
Recommendation	Material of contact pads for bus connector, galvanic gold (hard gold)

### Product properties

Product type	Enclosure bottom part
Housing type	DIN rail housing
Housing series	ME
Product family	ME 22,5..
Type	Lower housing parts with vents, housing cover necessary to complete the module
Number of positions	16
	4
	24
Max. number of positions	0)
Type	Lower housing part with metal foot catch, with FE contact, tall design
Ventilation openings present	yes

### Dimensions

Dimensional drawing	
Width	22.6 mm
Height	99 mm
Depth	107.3 mm
Depth from top edge of DIN rail	100.7 mm
Depth from top edge of DIN rail to support point on upper part	68.5 mm

### PCB design

PCB thickness	1.4 mm ... 1.8 mm
---------------	-------------------

### Material specifications

Color (Housing)	black (RAL 9005)
Flammability rating according to UL 94	V0
CTI according to IEC 60112	600
Housing material	PA

# ME 22,5 UT/FE BUS/10 BK - Mounting base housing



2854254

<https://www.phoenixcontact.com/in/products/2854254>

Surface characteristics	untreated
-------------------------	-----------

## Environmental and real-life conditions

### Power dissipation single housing for 20 °C

Ambient temperature	20 °C
Reduction factor	1
Mounting position	vertical
Power dissipation	6.1 W

### Power dissipation single housing for 30 °C

Ambient temperature	30 °C
Reduction factor	0.91
Mounting position	vertical
Power dissipation	5.5 W

### Power dissipation single housing for 40 °C

Ambient temperature	40 °C
Reduction factor	0.81
Mounting position	vertical
Power dissipation	4.9 W

### Power dissipation single housing for 50 °C

Ambient temperature	50 °C
Reduction factor	0.7
Mounting position	vertical
Power dissipation	4.3 W

### Power dissipation single housing for 60 °C

Ambient temperature	60 °C
Reduction factor	0.57
Mounting position	vertical
Power dissipation	3.5 W

### Power dissipation single housing for 70 °C

Ambient temperature	70 °C
Reduction factor	0.49
Mounting position	vertical
Power dissipation	3.1 W

### Vibration test

Specification	IEC 60068-2-6:2007-12
Frequency	10 - 150 - 10 Hz
Sweep speed	1 octave/min
Amplitude	0.15 mm (10 Hz ... 58.1 Hz)
Acceleration	2g (58.1 Hz ... 150 Hz)
Test duration per axis	2.5 h

# ME 22,5 UT/FE BUS/10 BK - Mounting base housing



2854254

<https://www.phoenixcontact.com/in/products/2854254>

Test directions	X-, Y- and Z-axis
-----------------	-------------------

## Glow-wire test

Specification	IEC 60695-2-11:2014-02
Temperature	850 °C
Time of exposure	30 s

## Thermal stability / ball thrust test

Specification	IEC 60695-10-2:2014-02
Temperature	125 °C
Test duration	1 h
Force	20 N

## Mechanical strength / tumbling barrel

Specification	IEC 60998-1:2002-12
Height of fall	50 cm
Frequency	10

## Shocks

Specification	IEC 60068-2-27:2008-02
Pulse shape	Half-sine
Acceleration	15g
Shock duration	11 ms
Number of shocks per direction	3
Test directions	X-, Y- and Z-axis (pos. and neg.)

## Degree of protection (IP code)

Specification	IEC 60529:1989-11 + AMD 1:1999-11 + AMD 2:2013-08
---------------	---

## Ambient conditions

Max. IP code to attain	IP20
Ambient temperature (operation)	-40 °C ... 105 °C (depending on power dissipation)
Ambient temperature (storage/transport)	-40 °C ... 55 °C
Ambient temperature (assembly)	-5 °C ... 100 °C
Relative humidity (storage/transport)	80 %

## PCB data

Number of PCB holders	1
Type of PCB mount	Insertion (optional latching by PCB stop)
Thickness of the PCB	1.4 mm ... 1.8 mm

## Mounting

Mounting type	DIN rail mounting
---------------	-------------------

## Packaging specifications

Type of packaging	packed in cardboard
Outer packaging type	Carton

# ME 22,5 UT/FE BUS/10 BK - Mounting base housing

2854254

<https://www.phoenixcontact.com/in/products/2854254>

## Drawings

Dimensional drawing



Schematic figure for illustrating the item dimensions. The figure is not of the desired product. For further details, refer to the product drawings in the "Downloads" tab.

# ME 22,5 UT/FE BUS/10 BK - Mounting base housing





2854254

<https://www.phoenixcontact.com/in/products/2854254>

## Approvals

To download certificates, visit the product detail page: <https://www.phoenixcontact.com/in/products/2854254>

 <b>cUL Recognized</b> Approval ID: FILE E 60425				
	Nominal voltage $U_N$	Nominal current $I_N$	Cross section AWG	Cross section $\text{mm}^2$
Use group B	300 V	8 A	-	-
Use group D	300 V	8 A	-	-

 <b>UL Recognized</b> Approval ID: FILE E 60425				
	Nominal voltage $U_N$	Nominal current $I_N$	Cross section AWG	Cross section $\text{mm}^2$
Use group B	300 V	8 A	-	-
Use group D	300 V	8 A	-	-

<b>cULus Recognized</b>				
-------------------------	--	--	--	--

# ME 22,5 UT/FE BUS/10 BK - Mounting base housing



2854254

<https://www.phoenixcontact.com/in/products/2854254>

## Classifications

### ECLASS

ECLASS-11.0	27182702
ECLASS-13.0	27190601

### ETIM

ETIM 9.0	EC002779
----------	----------

### UNSPSC

UNSPSC 21.0	31261500
-------------	----------

Environmental product compliance

EU RoHS	
Fulfills EU RoHS substance requirements	Yes, No exemptions
China RoHS	
Environment friendly use period (EFUP)	EFUP-E
	No hazardous substances above the limits
EU REACH SVHC	
REACH candidate substance (CAS No.)	No substance above 0.1 wt%



# ME 22,5 UT/FE BUS/10 BK - Mounting base housing



2854254

<https://www.phoenixcontact.com/in/products/2854254>

## Mandatory accessories

### ME 22,5 OT-FKDSO BK - Upper housing part

2200838

<https://www.phoenixcontact.com/in/products/2200838>

DIN rail housing, Upper housing part for PCB terminal blocks with Push-in spring connection, width: 22.6 mm, height: 99 mm, depth: 45.85 mm



---

### ME 22,5 OT-MSTBO BK - Upper housing part

2908980

<https://www.phoenixcontact.com/in/products/2908980>

DIN rail housing, Upper housing part for connectors with header, width: 22.6 mm, height: 99 mm, depth: 45.85 mm, color: black (similar RAL 9005)



# ME 22,5 UT/FE BUS/10 BK - Mounting base housing



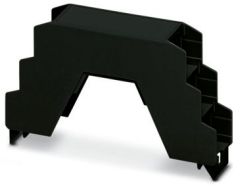
2854254

<https://www.phoenixcontact.com/in/products/2854254>

## ME 22,5 OT-3MSTBO BK - Upper housing part

2901233

<https://www.phoenixcontact.com/in/products/2901233>



DIN rail housing, Upper housing part for connectors with header, width: 22.6 mm, height: 102 mm, depth: 60.15 mm, color: black (similar RAL 9005)

---

## ME 22,5 OT-MKDSO BK - Upper housing part

2908414

<https://www.phoenixcontact.com/in/products/2908414>



DIN rail housing, Upper housing part for PCB terminal blocks with screw connection, width: 22.6 mm, height: 99 mm, depth: 45.85 mm, color: black (similar RAL 9005)

# ME 22,5 UT/FE BUS/10 BK - Mounting base housing



2854254

<https://www.phoenixcontact.com/in/products/2854254>

## ME 22,5 OT-1MSTBO BK - Upper housing part

2707495

<https://www.phoenixcontact.com/in/products/2707495>

DIN rail housing, Upper housing part for connectors with header, width: 22.6 mm, height: 99 mm, depth: 45.85 mm, color: black (similar RAL 9005)



---

## Accessories

### ME LPZS - PCB stop

2906911

<https://www.phoenixcontact.com/in/products/2906911>

DIN rail housing, after approx. 4 cm, the ME LPZS PCB pull-out stop prevents the PCB from being removed completely and locks the PCB in place



## ME 22,5 UT/FE BUS/10 BK - Mounting base housing

2854254

<https://www.phoenixcontact.com/in/products/2854254>



### ME-SAS - Shield connection clamp

2853899

<https://www.phoenixcontact.com/in/products/2853899>

Shield connection clamp for terminal points starting from 2.5 mm<sup>2</sup>



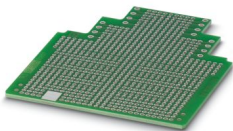
---

### ME LP - PCB

2906908

<https://www.phoenixcontact.com/in/products/2906908>

PCB, for custom fitting, with contact to DIN rail (EN 60715)



# ME 22,5 UT/FE BUS/10 BK - Mounting base housing



2854254

<https://www.phoenixcontact.com/in/products/2854254>

## MC 1,5/10-ST-3,81 BK - PCB connector

1839733

<https://www.phoenixcontact.com/in/products/1839733>



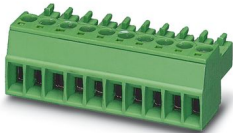
PCB connector, nominal cross section: 1.5 mm<sup>2</sup>, color: black, nominal current: 8 A, rated voltage (III/2): 160 V, contact surface: Sn, contact connection type: Socket, number of potentials: 10, number of rows: 1, number of positions: 10, number of connections: 10, product range: MC 1,5/...-ST, pitch: 3.81 mm, connection method: Screw connection with tension sleeve, screw head form: L Slotted, conductor/PCB connection direction: 0 °, pin layout: Linear three-way pinning, plug-in system: COMBICON MC 1,5, locking: without, mounting method: without, type of packaging: packed in cardboard

---

## MC 1,5/10-ST-3,81 BK AU - PCB connector

1771978

<https://www.phoenixcontact.com/in/products/1771978>



PCB connector, nominal cross section: 1.5 mm<sup>2</sup>, color: black, nominal current: 8 A, rated voltage (III/2): 160 V, contact surface: Au, contact connection type: Socket, number of potentials: 10, number of rows: 1, number of positions: 10, number of connections: 10, product range: MC 1,5/...-ST, pitch: 3.81 mm, connection method: Screw connection with tension sleeve, screw head form: L Slotted, conductor/PCB connection direction: 0 °, pin layout: Linear three-way pinning, plug-in system: COMBICON MC 1,5, locking: without, mounting method: without, type of packaging: packed in cardboard

# ME 22,5 UT/FE BUS/10 BK - Mounting base housing



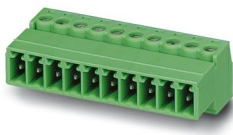
2854254

<https://www.phoenixcontact.com/in/products/2854254>

## IMC 1,5/10-ST-3,81 BK AU - PCB connector

1770746

<https://www.phoenixcontact.com/in/products/1770746>



PCB connector, nominal cross section: 1.5 mm<sup>2</sup>, color: black, nominal current: 8 A, rated voltage (III/2): 160 V, contact surface: Au, contact connection type: Pin, number of potentials: 10, number of rows: 1, number of positions: 10, number of connections: 10, product range: IMC 1,5/...-ST, pitch: 3.81 mm, connection method: Screw connection with tension sleeve, screw head form: L Slotted, conductor/PCB connection direction: 0 °, plug-in system: COMBICON MC 1,5, locking: without, mounting method: without, type of packaging: packed in cardboard

## EML (44X64)R-ME - Label for ME ... UT ... BUS ... housing

0828266

<https://www.phoenixcontact.com/in/products/0828266>



Label for ME ... UT ... BUS ... housing, Roll, white, unlabeled, can be labeled with: THERMOMARK ROLLMARKER 300/600, THERMOMARK X1.2, THERMOMARK ROLL X1, THERMOMARK ROLL 2.0, THERMOMARK ROLL, mounting type: adhesive, Number of individual labels: 200, text field height: 64 mm, text field width: 44 mm

Phoenix Contact 2025 © - all rights reserved

<https://www.phoenixcontact.com>

PHOENIX CONTACT (I) Pvt. Ltd.

A-58/2, Okhla Industrial Area, Phase - II, New Delhi-110 020

+91.1275.71420

[info@phoenixcontact.co.in](mailto:info@phoenixcontact.co.in)