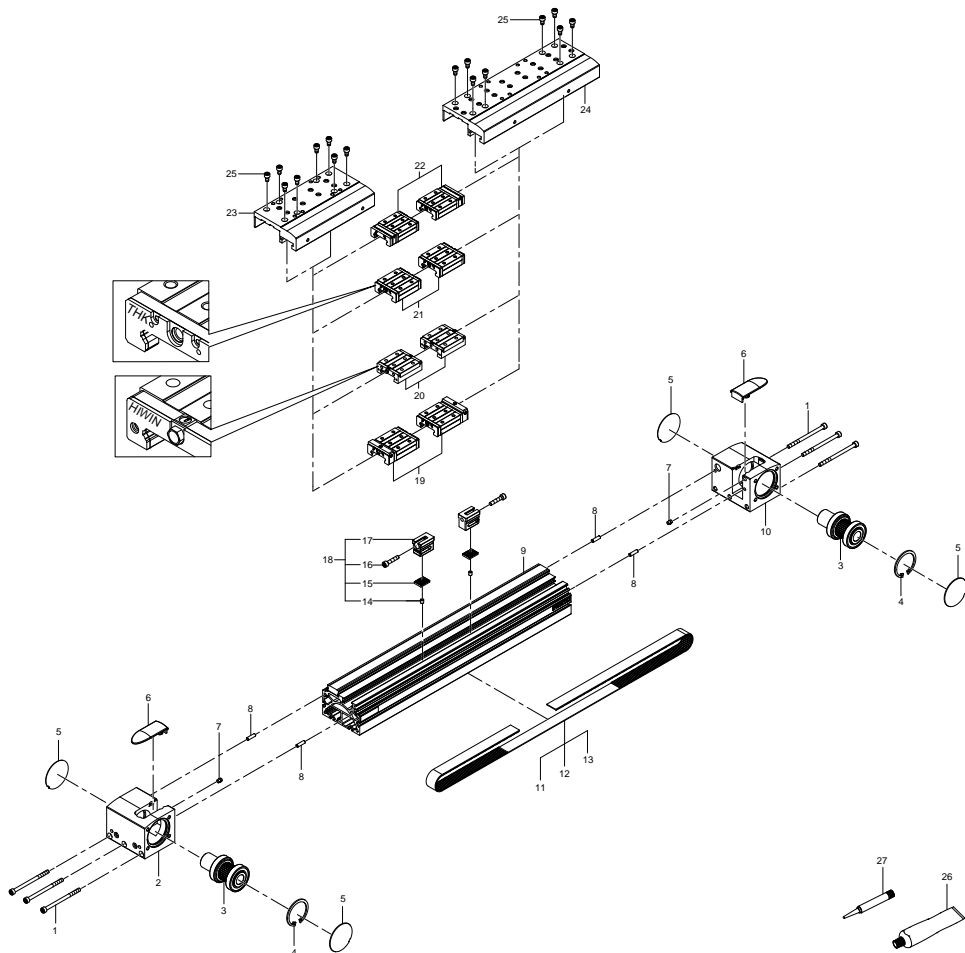


3013364 EGC-120-400-TB-KF-0H-GK Toothed belt axis - Series: All



## 3013364 EGC-120-400-TB-KF-0H-GK Toothed belt axis - Series: All

| Pos. | Part no. | Type   | Note   | Qty. | Unit |
|------|----------|--|--|------|------|
| 1    | 730182   | ISO 4762-M6X110-8.8<br>Socket head screw     | Tightening torque 11 Nm / 8.1 lbf ft<br>Use locking compound. See position 27  | 6    | PC   |
| 2    | 716439   | EGC-120-TB: LI<br>Drive cover                |  | 1    | PC   |
| 3    | 723111   | EGC-120-TB:STD<br>Toothed belt pulley module |  | 2    | PC   |
| 4    | 353854   | DIN 472-62X2<br>Retaining ring               |  | 2    | PC   |
| 5    | 716455   | EGC-120-TB<br>Sealing washer                 |  | 4    | PC   |
| 6    | 716448   | EGC-120-TB<br>Cover cap                      |  | 2    | PC   |
| 7    | 371076   | 9,9X10,0<br>Buffer element                   |  | 2    | PC   |
| 8    | 247948   | DIN 7346-5X20<br>Spring pin                  |  | 4    | PC   |
| 9    |          | EGC-120-TB-KF<br>Cylinder barrel             | Not available  | 1    | PC   |
| 10   | 716440   | EGC-120-TB: RE<br>Drive cover                |  | 1    | PC   |
| 11   | 743151   | EGC-120- -YT-<br>Toothed belt                | When ordering please specify the configuration (see type plate)<br>Attention! It is essential that the information in the repair manual be closely observed!<br><a href="#">▶ Replacing the toothed belt</a> | 1    | PC   |
| 12   | 8096938  | 30,3LL-5MR-5M-610-5555<br>Toothed belt       | Attention! Length 5 meter<br>Attention! The Material is [ ]<br><a href="#">▶ Replacing the toothed belt</a>  | 1    | PC   |
| 13   | 8119356  | PGGT-30-LL-5MR-5M-PU2<br>Toothed belt        | Attention! Length 5 meter<br>Attention! The Material is [PU2]<br><a href="#">▶ Replacing the toothed belt</a>  | 1    | PC   |
| 14   | 369654   | ISO 4026-M8X8-45H<br>Threaded pin            | Tightening torque 4 Nm / 3.0 lbf ft<br>Use locking compound. See position 27   | 2    | PC   |
| 15   |          | EGC-120-TB<br>Clamping plate                 | Not available separately, see position 18  | 2    | PC   |
| 16   | 200129   | ISO 4762-M6X40-10.9<br>Socket head screw     |  | 2    | PC   |
| 17   |          | EGC-120-TB<br>Clamping part                  | Not available separately, see position 18  | 2    | PC   |
| 18   | 739500   | EGC-120-TB ET<br>Clamping part               |  | 2    | PC   |
| 19   | 736906   | EGC-120-KF-GK/GV-C/GR_L4<br>Roller carriage  | Attention! It is essential that the information in the repair manual be closely observed!<br>Grease using during assembly. See position 26   | 1    | PC   |
| 20   | 8087522  | EGC-120GK/GV_DGC40/50_L2<br>Roller carriage  | Attention! It is essential that the information in the repair manual be closely observed!<br>Grease using during assembly. See position 26   | 1    | PC   |
| 21   | 716521   | EGC-120-KF-GK/GV_L4<br>Roller carriage       | Attention! It is essential that the information in the repair manual be closely observed!<br>Grease using during assembly. See position 26   | 1    | PC   |
| 22   | 722902   | EGC-120-KF-GP/GQ_L4<br>Roller carriage       | Attention! It is essential that the information in the repair manual be closely observed!<br>Grease using during assembly. See position 26   | 1    | PC   |
| 23   | 716498   | EGC-120-TB-KF-GK/GP<br>Slide module          |  | 1    | PC   |
| 24   | 716500   | EGC-120-TB-KF-GV/GQ<br>Slide module          |  | 1    | PC   |

| Pos. | Part no. | Type   | Note   | Qty. | Unit |
|------|----------|--|--|------|------|
| 25   | 200683   | ISO 4762-M6X10-10.9<br>Socket head screw       | Tightening torque 15 Nm / 11.1 lbf ft<br>Use locking compound. See position 27 | 8    | PC   |
| 26   | 684474   | LUB-KC1 SILIKONFREI 20ML<br>Lubricating grease |  | 1    | PC   |
| 27   | 8181256  | CYBERBOND TM44 TB1ML<br>Adhesive bonding agent |  | 1    | PC   |