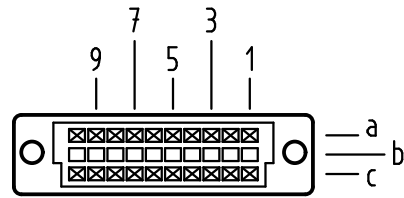


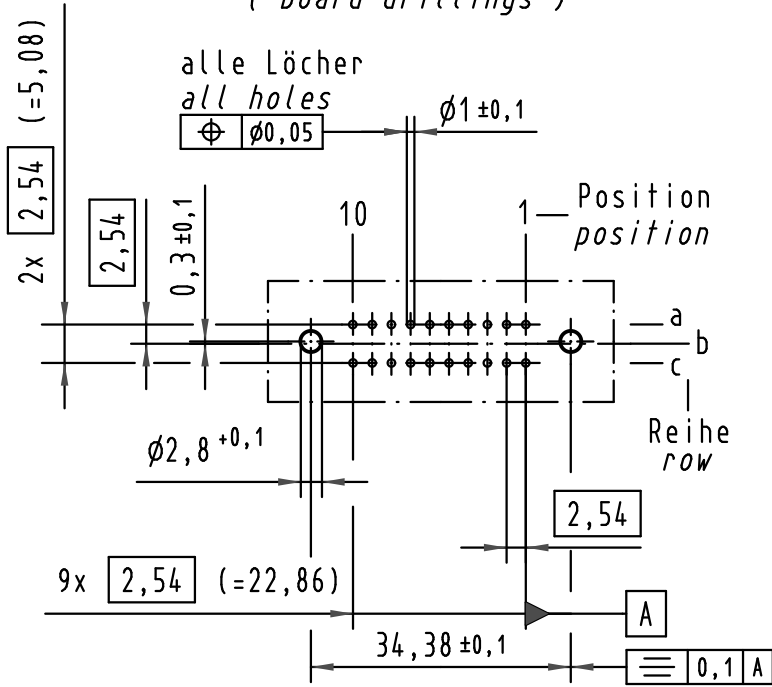
X
Kontaktanordnung
contact arrangement



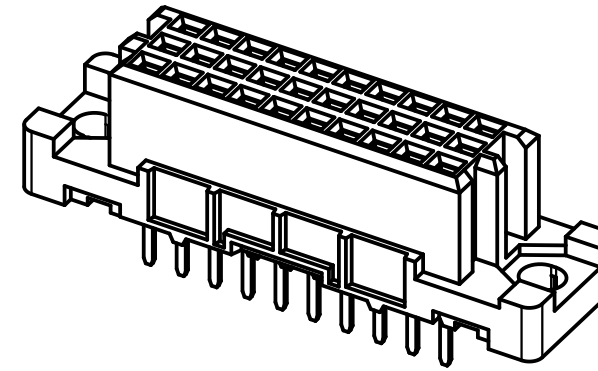
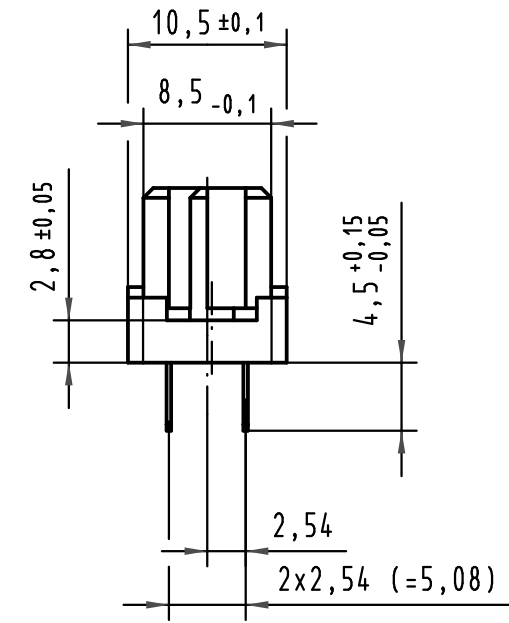
20 Einlöt-Kontakte
20 solder-contacts

- ☒ = Einlöt-Kontakt
= solder-contact
- ☐ = Kontaktposition nicht belegt
= position without contact

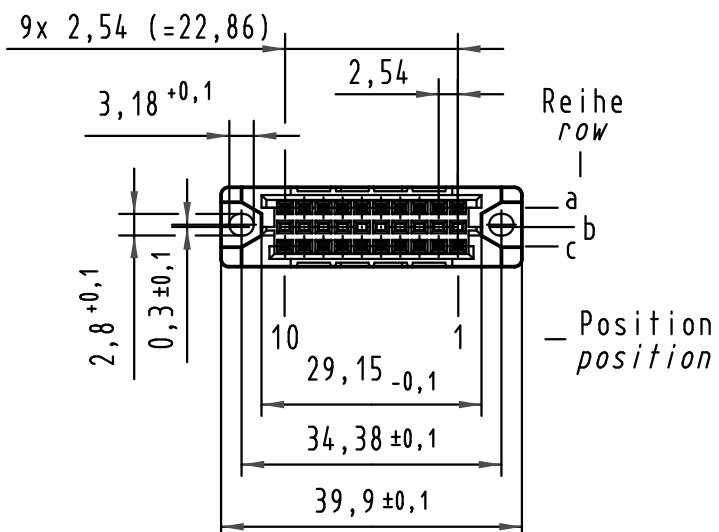
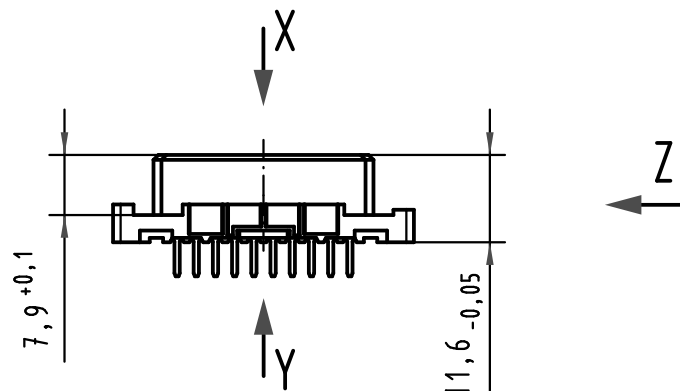
X
(Lochbild)
(board drillings)



Z
2:1

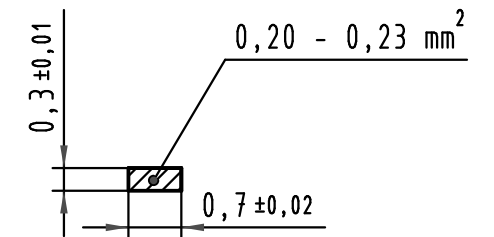


Alle Rechte vorbehalten/ All rights reserved



Y
10:1

Querschnitt der
Lötanschlüsse:
cross-section of
solder terminations:



09 25 220 6825

2

Au über/over Ni

Bestell-Nr.
part-no.

Anforderungsstufe nach IEC
performance level acc. to IEC

Kontaktfläche
contact plating

| All Dimensions in mm Original Size DIN A 3 | | Techn. Character. | | | Nicht tolerierte Maßel Free size tolerances IEC 60603-2 | |
|---|------|--|----------|------|--|---|
| Mod. | Dat. | Name | Dat. | Name | Maßstab/Scale | |
| 35607 | | | 09.02.09 | MR | 1:1 | har-bus 3C Federleiste Einlöt 4,5 , 20 pol. har-bus 3C female connector solder 4,5 , 20 pol. |
| | | | 09.02.09 | RA | 2:1 10:1 | |
| | | | | | | |
| | | HARTING Electronics GmbH & Co. KG D-32339 ESPELKAMP | | | TB 09 25 220 x825 | |
| | | | | | Blatt/ page | |
| | | | | | Sub. | |