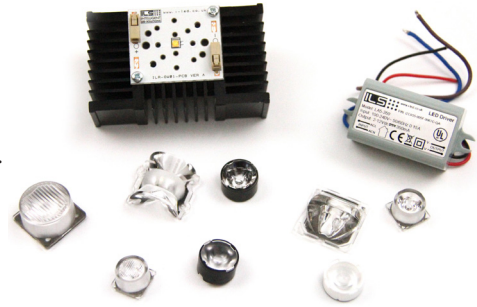


LEDiL Lens Selector Kit

ILK-LEDIL-OSLON-SELECTOR-0#.

Product Overview

The LEDiL Selector Kit from ILS is the latest development kit designed to explore which secondary optic works best with OSRAM OSOLON® LEDs. There are 4 types of LEDiL selector kits which represent each member of the OSOLON® family; OSOLON® 80, OSOLON® 150 and OSOLON® Square (120). The fourth kit contains all 3 OSOLON® SSL LEDs within the same box. The LEDiL Selector has been designed to work with most single source optics from LEDiL and can be connected to an LED driver thanks to the on board connectors. OSOLON® SSL 80 and 150 can be driven up to 1300mA whilst the square can be driven up to 1800mA while OSRAM's power chip technology remains efficient even at the highest drive currents. A very low thermal resistance ensures cool running and a highly efficient product.



Product Options

Product	Description
ILK-LEDIL-OSLON-SELECTOR-01.	LEDiL Lens Development Kit, Including Oslon 150, 4000K LED Engine, Driver, Heatsink, TIM, Screws and a selection of lenses
ILK-LEDIL-OSLON-SELECTOR-02.	LEDiL Lens Development Kit, Including Oslon Square 120, 4000K LED Engine, Driver, Heatsink, TIM, Screws and a selection of lenses
ILK-LEDIL-OSLON-SELECTOR-03.	LEDiL Development Kit, Including Oslon 80, 4000K LED Engine, Driver, Heatsink, TIM Screws and a selection of lenses
ILK-LEDIL-OSLON-SELECTOR-04.	LEDiL Development Kit, Including Oslon 80, 150 & Square 120, 4000K LED Engines, Driver, Heatsink, TIM, Screws and a selection of lenses

Kit Contents – LEDiL Selector Kits are supplied un-assembled

ILK-LEDIL-OSLON-SELECTOR-01.

- 1 x LEDiL Selector Light Engine using Osram OSOLON® SSL 150 4000K – ILR-OW01-NUWH-SC221-WIR200.
- 1 x Heat Sink – ILA-HSINK-78X46X25MM-BLK
- 1 x LED Driver - IZC035-005F-0067C-QA
- 1 x Thermal Interface Material – ILA-TIM-LEDIL-2A
- 2 x M3 Fixing Screws - SCREWM3X6-PACK2.

ILK-LEDIL-OSLON-SELECTOR-02.

- 1 x LEDiL Selector Light Engine using Osram OSOLON® SSL Square 4000K – ILR-OO01-NUWH-SC221-WIR200.
- 1 x Heat Sink – ILA-HSINK-78X46X25MM-BLK
- 1 x LED Driver - IZC035-005F-0067C-QA
- 1 x Thermal Interface Material – ILA-TIM-LEDIL-2A
- 2 x M3 Fixing Screws - SCREWM3X6-PACK2.

ILK-LEDIL-OSLON-SELECTOR-03.

- 1 x LEDiL Selector Light Engine using Osram OSLON® SSL 80 4000K – ILR-ON01-NUWH-SC221-WIR200.
- 1 x Heat Sink – ILA-HSINK-78X46X25MM-BLK
- 1 x LED Driver - IZC035-005F-0067C-QA
- 1 x Thermal Interface Material – ILA-TIM-LEDIL-2A
- 2 x M3 Fixing Screws - SCREWM3X6-PACK2.

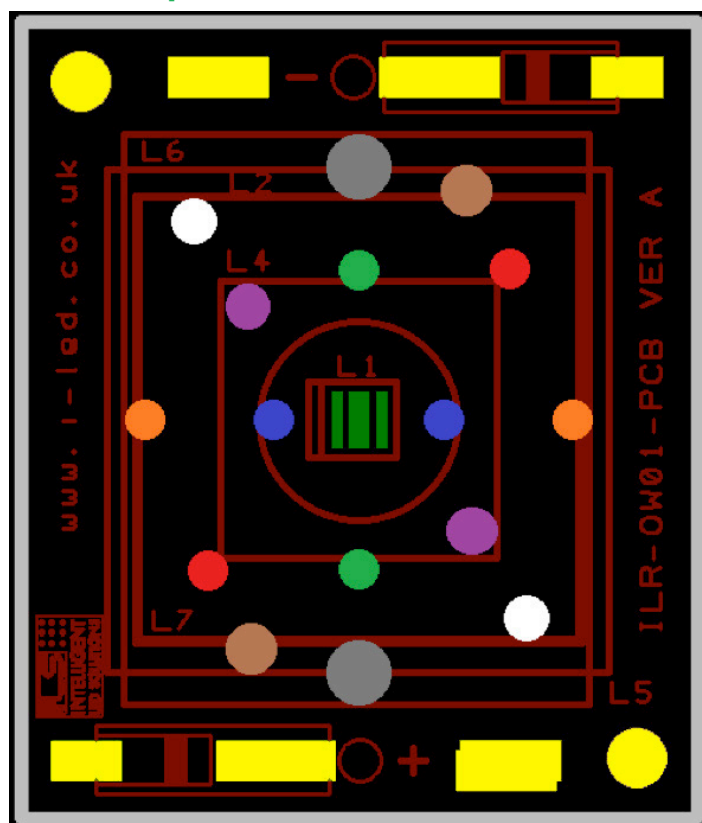
ILK-LEDIL-OSLON-SELECTOR-04.

- 1 x LEDiL Selector Light Engine using Osram OSLON® SSL 150 4000K – ILR-OW01-NUWH-SC221-WIR200.
- 1 x LEDiL Selector Light Engine using Osram OSLON® SSL Square 4000K – ILR-OO01-NUWH-SC221-WIR200.
- 1 x LEDiL Selector Light Engine using Osram OSLON® SSL 80 4000K – ILR-ON01-NUWH-SC221-WIR200.
- 1 x Heat Sink – ILA-HSINK-78X46X25MM-BLK
- 1 x LED Driver - IZC035-005F-0067C-QA
- 1 x Thermal Interface Material – ILA-TIM-LEDIL-2A
- 2 x M3 Fixing Screws - SCREWM3X6-PACK2.

As standard all Kits contain the following lens

RS Part	LEDiL Part
710-7329	CA10932_FLARE-B
891-0595	CA14601_VERONICA-SQ-MINI-RS
891-0586	CA14602_VERONICA-SQ-MINI-O
786-1868	CA12374_TINA2-RS
918-9048	CP12672_TINA2-M
892-2771	CA12427_TINA3-WW
892-2832	CA12889_STRADA-SQ-T-DWC
892-2832	CA13726_VERONICA-SQ-O

Other compatible families for the LEDiL selector are:



Powering up the LEDiL Selector Kit

Before connecting the LED driver to the mains make sure that the LED board is connected to the PCB. Connecting the PCB to a live LED Driver could cause hot plugging which could cause damage to the LED. Connect the red wire of the driver to the + connector and black wire to the - connector.

Family	Locator Pin
AMELIA	RED
BILLIE	BLUE
CRYSTAL	RED
EMERALD	BLUE
EMILY	BLUE
EMMA	BLUE
EVA	NO HOLE NEEDED
EYA	NO HOLE NEEDED
FLARE	WHITE
FLARE-MINI	BLUE
FLARE-MAXI	ORANGE
FLORENTINA-1	RED
FRIDA	BLUE
HEIDI	BLUE
IRENE	BLUE
IRINA	BLUE
IRIS	BLUE
JULIA	BLUE
KIKI	ORANGE
LARISA	BLUE
LAURA	BLUE
LEILA	BLUE
LISA2	BLUE
LOTTA	BLUE
MIRELLA	BLUE
OONA	NO HOLE NEEDED
REGINA	BLUE
RITA	BLUE
ROSE	GREEN
SEANNA	NO HOLE NEEDED
SIRI	BLUE
STRADA-A	BLUE
STRADA-C2	BLUE
STRADA-D	BLUE
STRADA FORWARD	BLUE
STRADA-K	BLUE
STRADA-S	BLUE
STRADA-SQ	ORANGE
STRADA-T	BLUE
STRADELLA	BLUE
TINA	BLUE
TINA2	BLUE
TINA3	BLUE
TWIDDLE	BLUE
VERONICA	GREEN
VERONICA-MINI	PURPLE
VERONICA-SQUARE	RED
VERONICA-ROUND	ORANGE
ZOWIE	NO HOLE NEEDED

CAUTION

Never touch the LEDs as they are delicate and easy to damage physically and electronically.

Do not connect directly to mains (100-240V) – always use the driver provided. Do not hot plug into the driver.

Important Information and Precautions

- The LEDiL selector, when powered up are very bright. Thus it is advised that you do not look directly at it. Turn the LED engine away from you and do not shine into the eyes of others.
- Do not operate Selector with a Power Supply with unlimited current. Connection to constant voltage Power Supplies that are not current limited may cause the OSOLON® LED to consume current above the specified maximum and cause failure or irreparable damage.
- LEDs, when operated, can reach high temperatures thus there is risk of injury if they are touched.
- DO NOT HOT PLUG ON LED SIDE OF POWER SUPPLY.
- DO NOT TOUCH or PUSH on the LED as this can cause irreparable damage.

Safety Information

In order to optimise the thermal management, the metal surface needs to be clean (dirt and oil free) and planar for the best contact with the LED module. A thermal grease or heat transfer material is highly recommended.

The LED module itself and all its components must not be mechanically stressed.

Assembly must not damage or destroy conducting paths on the circuit board.

The mounting of the module is carried out by attaching it at the mounting holes. Metal mounting screws must be insulated with synthetic washers to prevent circuit board damage and possible short circuiting.

To avoid mechanical damage to the connecting cables, the boards should be attached securely to the intended substrate. Heavy vibration should be avoided.

Observe correct polarity!

Depending on the product, incorrect polarity will lead to emission of red or no light. The module can be destroyed!

Pay attention to standard ESD precautions when installing the LEDiL Selector.

The LEDiL Selector, as manufactured, have no conformal coating and therefore offer no inherent protection against corrosion.

The evaluation of eye safety occurs according to the standard IEC 62471:2006 ("photobiological safety of lamps and lamp systems"). Within the risk grouping system of this CIE standard, the LED specified in this data sheet falls into the class "moderate risk" (exposure time 0.25s). Under real circumstances (for exposure time, eye pupils, observation distance), it is assumed that no endangerment to the eye exists from these devices. As a matter of principle, however, it should be mentioned that intense light sources have a high secondary exposure potential due to their blinding effect. As is also true when viewing other bright light sources (e.g. headlights), temporary reduction in visual acuity and afterimages can occur, leading to irritation, annoyance, visual impairment and even accidents, depending on the situation.

For further information please contact ILS.

The values contained in this data sheet can change due to technical innovations. Any such changes will be made without separate notification.