



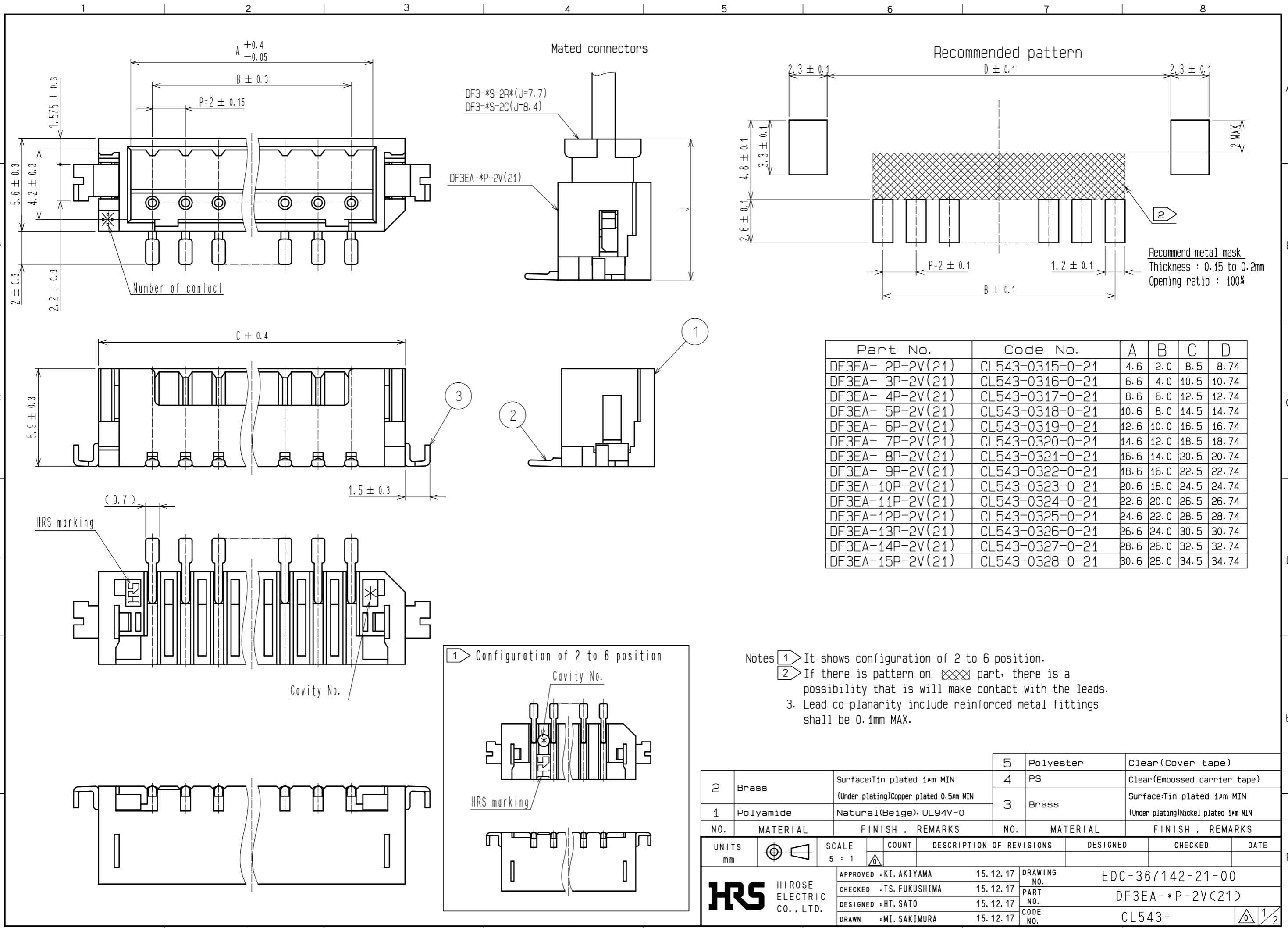


Applicable standard						
Rating	Operating temperature range 	-55°C to + 105°C(Note 1)	Storage temperature range	-10°C to + 60°C(Note 3)		
	Operating humidity range	40% to + 80%(Note 2)	Storage humidity range	40% to + 70%(Note 3)		
	Voltage	250V AC/DC	Applicable connector	DF3-*S-2C		
Current		AWG 22 to 24 : 3A AWG 26 : 2A AWG 28 : 1A	UL · CSA rating	Voltage	30V AC/DC	
				Current	AWG 24 : 3A AWG 26 : 2A AWG 28 : 1A (Note 4)	
Specifications						
Item	Test method		Requirements		QT	AT
Construction						
General examination	Visually and by measuring instrument.		According to drawing.		X	X
Marking	Confirmed visually.				X	X
Electric characteristics						
Contact Resistance Millivolt Level Method	20mV MAX, 1mA (DC or 1000Hz).		30mΩ MAX.		X	—
Insulation resistance	500V DC.		1000MΩ MIN.		X	—
Voltage proof	650V AC for 1 min.		No flashover or breakdown.		X	—
Mechanical characteristics						
Mechanical operation	30 times insertions and extractions.		① Contact resistance: 30mΩ MAX. ② No damage, crack or looseness of parts.		X	—
Vibration	Frequency 10 to 55 Hz, single amplitude 0.75 mm, at 2 h, for 3 directions.		① No electrical discontinuity of 1μs. ② No damage, crack or looseness of parts.		X	—
Shock	490 m/s <sup>2</sup> duration of pulse 11 ms at 3 times for 3 directions.		① No electrical discontinuity of 1μs. ② No damage, crack or looseness of parts.		X	—
Environmental characteristics						
Rapid change of temperature	Temperature -55°C→ +85°C Time 30min→ 30min Under 5 Cycles. (The transferring time of the tank is 2 to 3 MIN) (After leaving the room temperature for 1 to 2h.)		① Contact resistance: 30mΩ MAX. ② Insulation resistance: 1000MΩ MIN. ③ No damage, crack or looseness of parts.		X	—
Damp heat (Steady state)	Exposed at 40 ± 2 °c, 90 to 95 %, 96 h.		① Contact resistance: 30mΩ MAX. ② Insulation resistance: 500MΩ MIN. ③ No damage, crack or looseness of parts.		X	—
Resistance to Soldering heat	1) Reflow soldering Number of reflow cycles : 2 cycles MAX. Duration above 230°C, 60 sec. MAX. Peak temperature: 250°C 10 sec. MAX. Pre-heat temperature :150 to 180°C Pre-heat time : 90 to 120 sec. 2) Manual soldering Soldering iron temperature :300°C, Soldering time : 3sec. No strength on contact.		No deformation of case of excessive looseness of the terminals.		X	—
Solderability	Soldering temperature :230 °C Soldering time :3s.		A new uniform coating of solder shall cover minimum of 95 % of the surface being immersed.		X	—
Remarks						
Note 1: Include the temperature rising by current.						
Note 2:No condensing						
Note 3:Apply to the condition of long term storage for unused products before pcb on board, after pcb board , operating temperature and humidity range is applied for interim storage during transportation.						
Note 4:Apply to crimping contact type.						
	Count	Description of revisions	Designed	Checked	Date	
	1	DIS-H-00001874	HT. SATO	TS. FUKUSHIMA	16. 07. 22	
				Approved	KI. AKIYAMA	15. 12. 17
				Checked	TS. FUKUSHIMA	15. 12. 17
				Designed	HT. SATO	15. 12. 17
				Drawn	MI. SAKIMURA	15. 12. 17
Unless otherwise specified, refer to IEC 60512.						
Note QT:Qualification Test AT:Assurance Test X:Applicable Test			Drawing no.		ELC-367142-21-00	
	Specification sheet		Part no.	DF3EA-*P-2V (21)		
	Hirose electric co., ltd.		Code no.	CL543		1/1



Part No.	Code No.	A	B	C	D
DF3EA- 2P-2V(21)	CL543-0315-0-21	4.6	2.0	8.5	8.74
DF3EA- 3P-2V(21)	CL543-0316-0-21	6.6	4.0	10.5	10.74
DF3EA- 4P-2V(21)	CL543-0317-0-21	8.6	6.0	12.5	12.74
DF3EA- 5P-2V(21)	CL543-0318-0-21	10.6	8.0	14.5	14.74
DF3EA- 6P-2V(21)	CL543-0319-0-21	12.6	10.0	16.5	16.74
DF3EA- 7P-2V(21)	CL543-0320-0-21	14.6	12.0	18.5	18.74
DF3EA- 8P-2V(21)	CL543-0321-0-21	16.6	14.0	20.5	20.74
DF3EA- 9P-2V(21)	CL543-0322-0-21	18.6	16.0	22.5	22.74
DF3EA-10P-2V(21)	CL543-0323-0-21	20.6	18.0	24.5	24.74
DF3EA-11P-2V(21)	CL543-0324-0-21	22.6	20.0	26.5	26.74
DF3EA-12P-2V(21)	CL543-0325-0-21	24.6	22.0	28.5	28.74
DF3EA-13P-2V(21)	CL543-0326-0-21	26.6	24.0	30.5	30.74
DF3EA-14P-2V(21)	CL543-0327-0-21	28.6	26.0	32.5	32.74
DF3EA-15P-2V(21)	CL543-0328-0-21	30.6	28.0	34.5	34.74

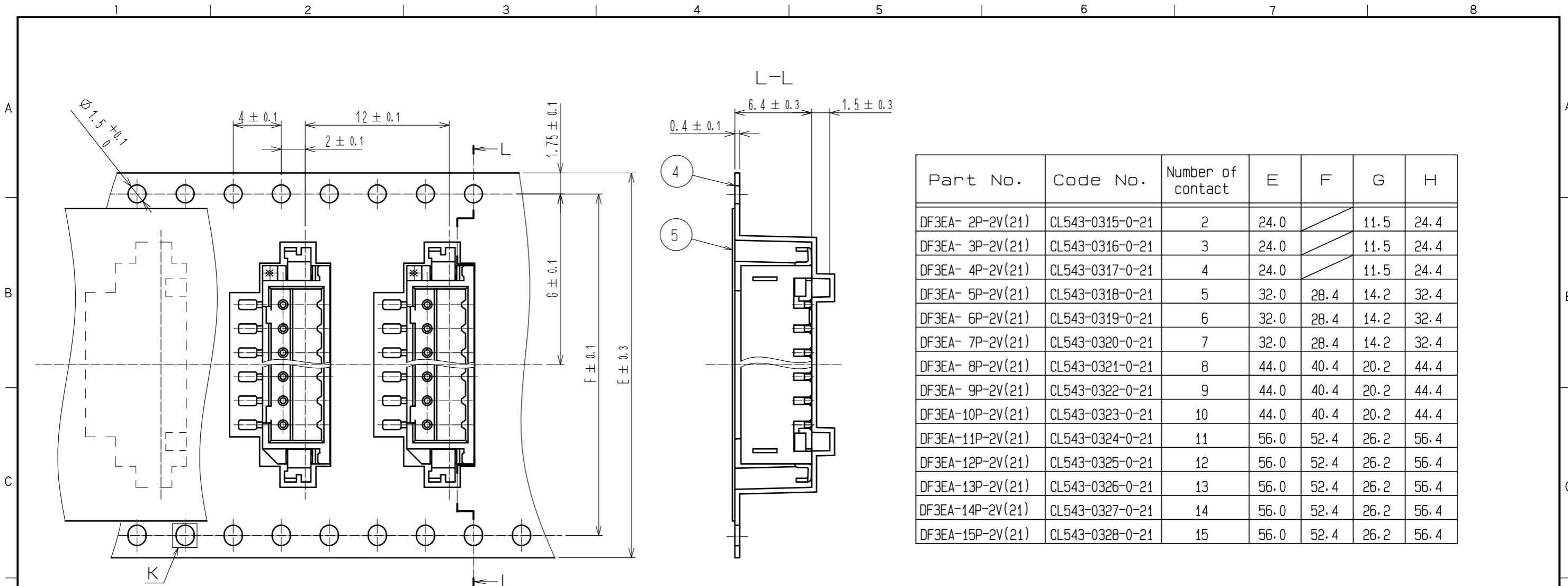
NO.	MATERIAL	FINISH .	REMARKS	NO.	MATERIAL	FINISH .	REMARKS
2	Brass	Surface: Tin plated 1μm MIN (Under plating) Copper plated 0.5μm MIN		5	Polyester		Clear(Cover tape)
1	Polyamide	Natural(Beige), UL94V-0		4	PS		Clear(Embossed carrier tape)
				3	Brass		Surface: Tin plated 1μm MIN (Under plating) Nickel plated 1μm MIN

UNITS	SCALE	COUNT	DESCRIPTION OF REVISIONS	DESIGNED	CHECKED	DATE
mm	5 : 1	△				

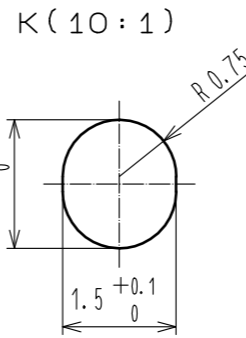
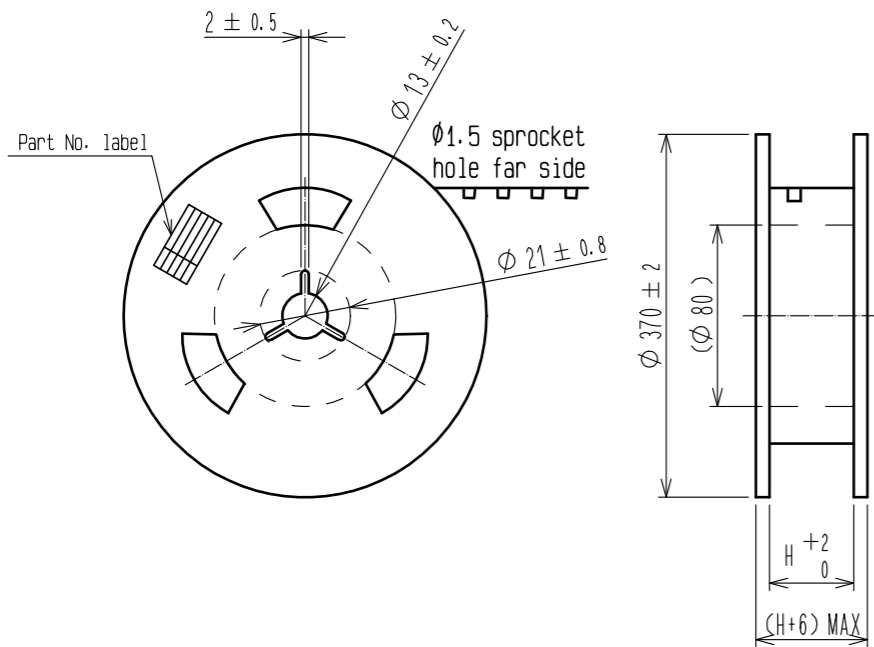
  

APPROVED	: KI. AKIYAMA	15.12.17	DRAWING NO.	EDC-367142-21-00
CHECKED	: TS. FUKUSHIMA	15.12.17	PART NO.	DF3EA-*P-2V(21)
DESIGNED	: HT. SATO	15.12.17	CODE NO.	CL543-
DRAWN	: MI. SAKIMURA	15.12.17		



Part No.	Code No.	Number of contact	E	F	G	H
DF3EA- 2P-2V(21)	CL543-0315-0-21	2	24.0		11.5	24.4
DF3EA- 3P-2V(21)	CL543-0316-0-21	3	24.0		11.5	24.4
DF3EA- 4P-2V(21)	CL543-0317-0-21	4	24.0		11.5	24.4
DF3EA- 5P-2V(21)	CL543-0318-0-21	5	32.0	28.4	14.2	32.4
DF3EA- 6P-2V(21)	CL543-0319-0-21	6	32.0	28.4	14.2	32.4
DF3EA- 7P-2V(21)	CL543-0320-0-21	7	32.0	28.4	14.2	32.4
DF3EA- 8P-2V(21)	CL543-0321-0-21	8	44.0	40.4	20.2	44.4
DF3EA- 9P-2V(21)	CL543-0322-0-21	9	44.0	40.4	20.2	44.4
DF3EA-10P-2V(21)	CL543-0323-0-21	10	44.0	40.4	20.2	44.4
DF3EA-11P-2V(21)	CL543-0324-0-21	11	56.0	52.4	26.2	56.4
DF3EA-12P-2V(21)	CL543-0325-0-21	12	56.0	52.4	26.2	56.4
DF3EA-13P-2V(21)	CL543-0326-0-21	13	56.0	52.4	26.2	56.4
DF3EA-14P-2V(21)	CL543-0327-0-21	14	56.0	52.4	26.2	56.4
DF3EA-15P-2V(21)	CL543-0328-0-21	15	56.0	52.4	26.2	56.4

Style and dimension of reel



Supplier  
Quantity  
Part No.  
Code No.  
Date of manufactured

Detail of Part No. label

生産月日	年 月 日
☒番	CL543-****-*-21
品名	DF3EA-*P-2V(21)
納入数量	1000K $\square$
納入者	ヒロセ電機(株)

- Notes
- 1 reel 1000 connectors.
  - At the beginning of the reel, 30 boxes shall be empty.  
At the end of the reel, 20 boxes shall be empty.
  - When the tape width is 32, 44 and 56 mm, sprocket holes shall be set on both sides of reel as shown on this drawing.

<b>HRS</b>	DRAWING NO.	EDC-367142-21-00
	PART NO.	DF3EA-*P-2V(21)
	CODE NO.	CL543-

2/2