



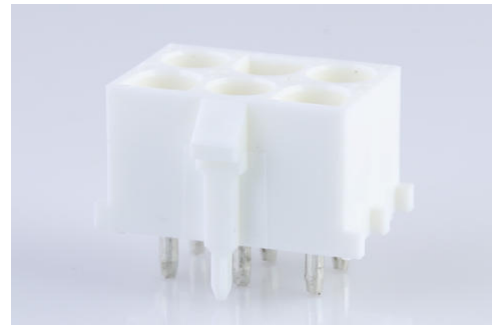
Part Number : [432550137](#)

Product Description : 6.35mm Pitch MLX Power Connector Header, 2.13mm Contact Diameter, Vertical, with Plastic Polarizing Peg, 6 Circuits, Polyester 94V-2, Tin Plating, Natural (Translucent), Lead-Free, Natural

Series Number : 43255

Status : Active

Product Category : PCB Headers and Receptacles



Documents & Resources

Drawings

[432550137_sd.pdf](#)

[PK-43255-001-001.pdf](#)

[PK-43255-003-001.pdf](#)

3D Models and Design Files

[STEP AP242](#)

[SOLIDWORKS](#)

[Creo](#)


[Symbol and Footprint \(Multi-Format\)](#)

Specifications

[PSX-42002-0001-001.pdf](#)

Product Environment Compliance

Compliance

GADSL/IMDS	Not Relevant
China RoHS	 per SJ/T 11365-2006
EU ELV	Not Relevant
Low-Halogen Status	Low-Halogen per IEC 61249-2-21
REACH SVHC	Not Contained per D(2025)4165-DC (25 June 2025)
EU RoHS	Compliant per EU 2015/863

Compliance Statements

- EU RoHS
- REACH SVHC
- Low-Halogen

Industry Documents

- IPC 1752A Class C
- IPC 1752A Class D
- Molex Product Compliance Declaration
- IEC-62474
- chemSHERPA (xml)

Substances of Interest

- PFAS

EU RoHS Certificate of Compliance

Additional Product Compliance Information

Part Details

General

Status	Active
Category	PCB Headers and Receptacles
Series	43255
Description	6.35mm Pitch MLX Power Connector Header, 2.13mm Contact Diameter, Vertical, with Plastic Polarizing Peg, 6 Circuits, Polyester 94V-2, Tin Plating, Natural (Translucent), Lead-Free, Natural
Application	Board-to-Board, Power, Wire-to-Board
Comments	High Vibration Application
Component Type	PCB Header
Product Name	MLX
UPC	800753948921

Agency

CSA	LR19980
UL	E29179

Electrical

Current - Maximum per Contact	20.0A, 9.0A
Voltage - Maximum	600V

Physical

Breakaway	No
Circuits (Loaded)	6
Circuits (maximum)	6
Color - Resin	Natural
Durability (mating cycles max)	50
First Mate / Last Break	No
Flammability	94V-2
Glow-Wire Capable	No
Keying to Mating Part	Yes
Lock to Mating Part	Yes
Mated Height	30.35mm
Material - Metal	Phosphor Bronze
Material - Plating Mating	Tin
Material - Plating Termination	Tin
Material - Resin	Nylon
Net Weight	3.507/g
Number of Rows	3
Orientation	Vertical
Packaging Type	Tray
PCB Locator	Yes
PCB Retention	Yes
PCB Thickness - Recommended	1.57mm
PC Tail Length	4.30mm
Pitch - Mating Interface	6.35mm
Pitch - Termination Interface	6.35mm
Plating min - Termination	3.500µm
Polarized to Mating Part	Yes
Polarized to PCB	Yes
Shrouded	Fully
Stackable	No
Temperature Range - Operating	-55° to +105°C

Termination Interface Style	Through Hole
-----------------------------	--------------

Solder Process Data

Lead-Free Process Capability	N/A
------------------------------	-----

Mates With / Use With

Mates with Part(s)

Description	Part Number
2.13mm Diameter MLX Power Crimp Housing Plugs	<u>42021</u>
MLX Male Crimp Terminals	<u>42023</u>
MLX Female Crimp Terminals	<u>42024</u>