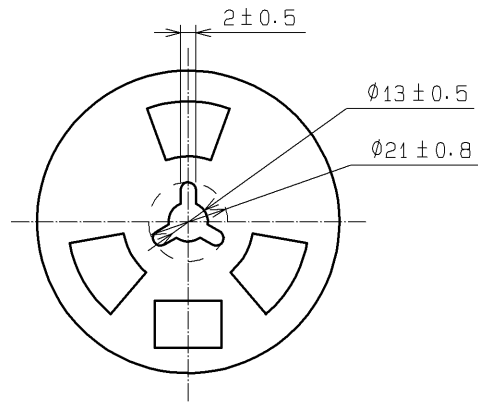
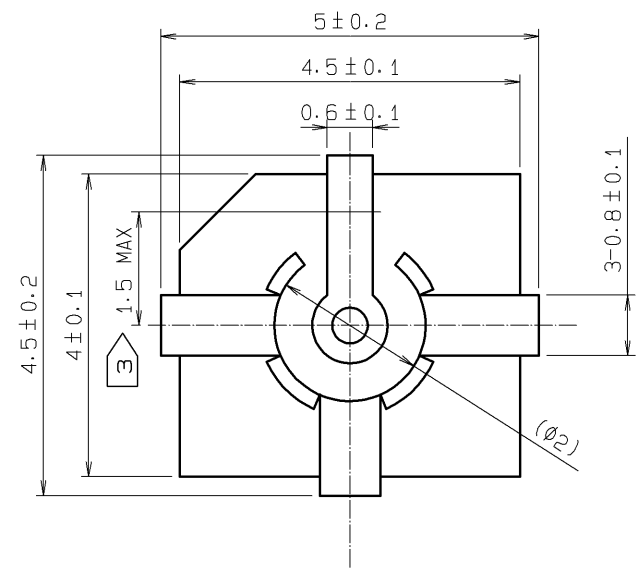
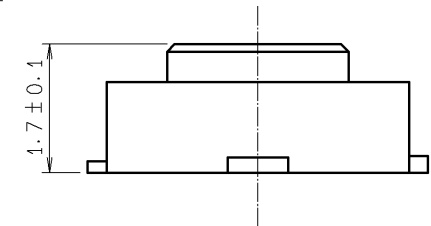
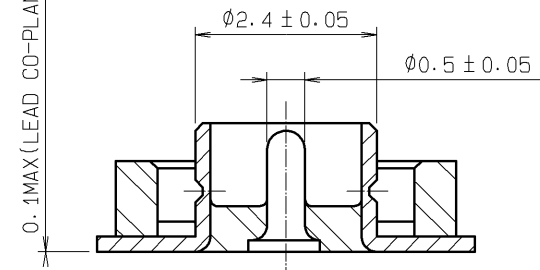
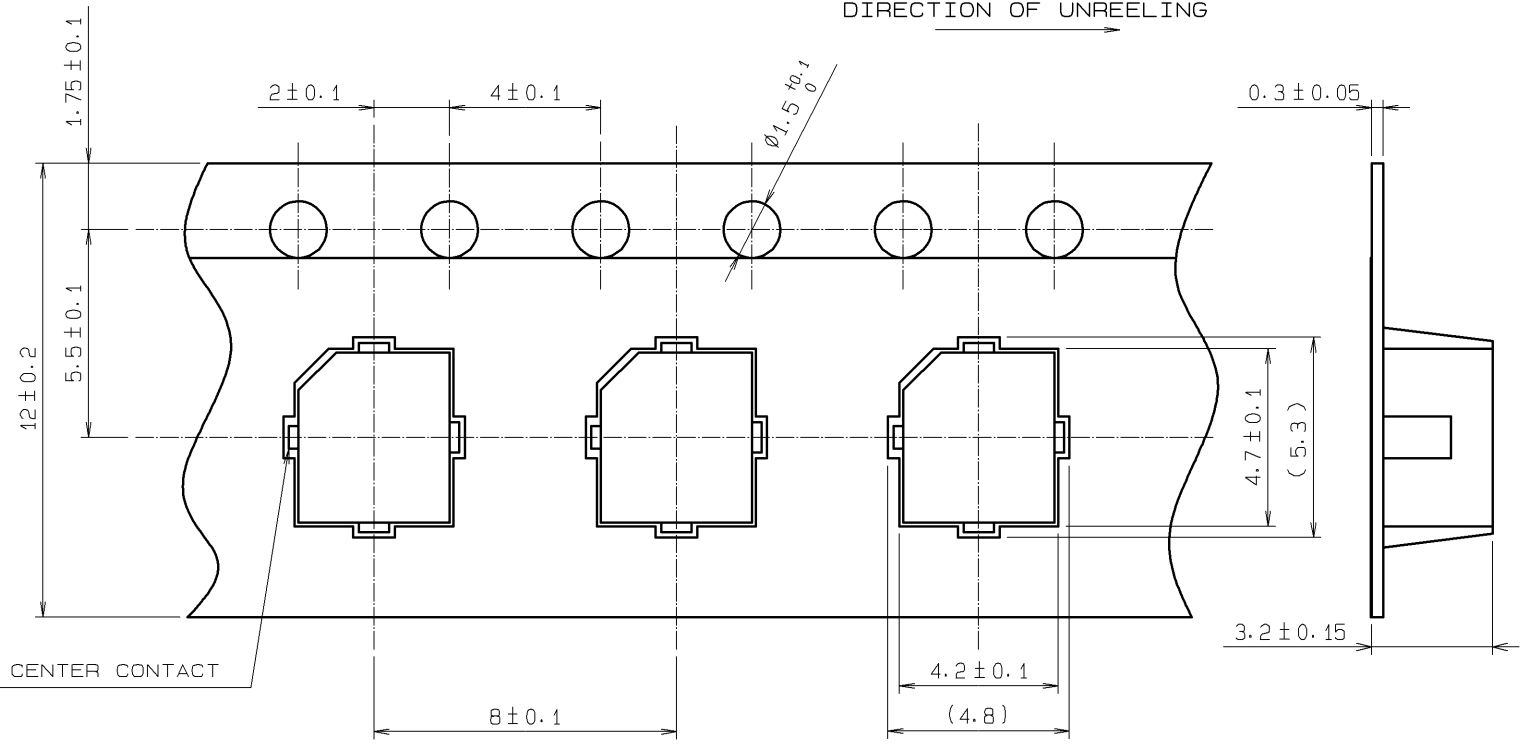


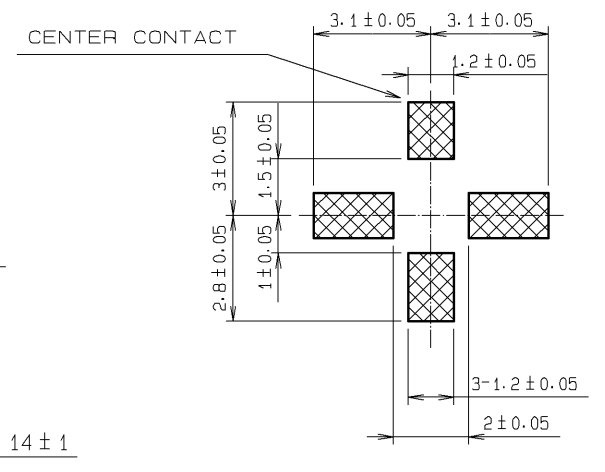
CONSTRUCTION AT SHIPPING(5:1)



REEL DRAWING (SCALE FREE)

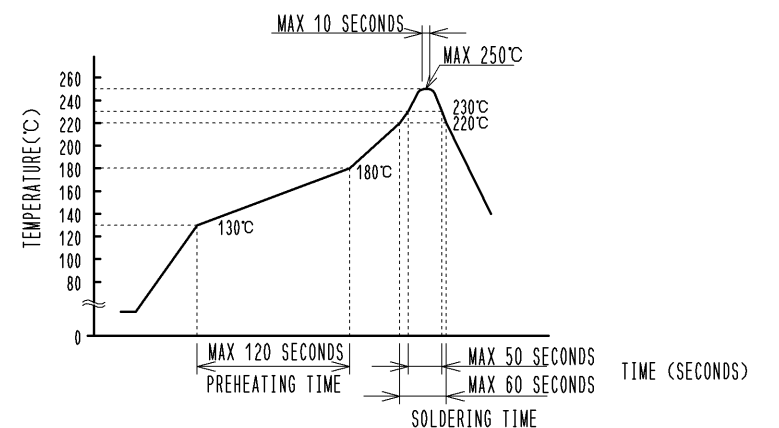


ENBOSSED TAPING DRAWING (5:1)



RECOMMENDED PC BOARD PATTERN DRAWING(5:1)

REFLOW TEMPERATURE PROFILE USING LEAD-FREE SOLDER PASTE (REFERENCE)



- 1) REFLOW TIME
 REFLOW METHOD : IR REFLOW
 NUMBER OF REFLOW CYCLES : 2 CYCLES MAX.
 DURATION ABOVE 220 °C : 60 SEC. MAX.
 DURATION ABOVE 230 °C : 50 SEC. MAX.
 (PEAK TEMPERATURE : 250°C 10 SEC. MAX.)
- 2) PRE-HEAT TIME
 PRE-HEAT TEMPERATURE(MIN) : 130 °C
 PRE-HEAT TEMPERATURE(MAX) : 180 °C
 PRE-HEAT TIME: 120 SEC. MAX.

THIS TEMPERATURE PROFILE IS PER THE CONDITIONS SHOWN ABOVE. ADDITIONAL FACTORS, SUCH AS SOLDER PASTE TYPE, PCB SIZE AND OTHER MOUNTED COMPONENTS COULD AFFECT THE PROFILE. THEREFORE, A THOROUGH EVALUATION OF MOUNTING CONDITION IS REQUIRED PRIOR TO PRODUCTION. TEMPERATURE IS MEASURED AT CONTACT LEAD.

RoHS COMPLIANT

- NOTE 1. THE QUANTITY OF H.FL-R-SMT(C)(10) IS 2500 CONNECTORS PER REEL.
2. REMOVE THE CAP, REF. NO. 4 AFTER MOUNTING.
- 3 THIS DIMENSION SHOWS THE ALLOWABLE RANGE THAT THE RESIN IS PUT OVER THE CENTER CONTACT.

2	LCP	(BLACK).UL94V-0	4	PA	(BEIJE).UL94V-0
1	PHOSPHOR BRONZE	SILVER PLATED	3	BRASS	GOLD PLATED
NO.	MATERIAL	FINISH . REMARKS	NO.	MATERIAL	FINISH . REMARKS
UNITS mm		SCALE 10 : 1	COUNT 	DESCRIPTION OF REVISIONS	DESIGNED
					CHECKED
					DATE
HRS	HIROSE ELECTRIC CO., LTD.	APPROVED : MH. YAMANE	11.08.02	DRAWING NO.	EDC3-047051-95
		CHECKED : NK. NINOMIYA	11.08.02	PART NO.	H. FL-R-SMT(C)(10)
		DESIGNED : YI. FUNADA	11.08.02	CODE NO.	CL331-0522-9-10
		DRAWN : YI. FUNADA	11.08.02		