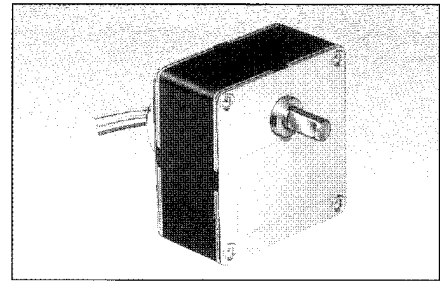


Single direction synchronous geared motors

- Constant speed, dependent on supply frequency
- Speeds from 0.24 rpm to 24 rpm
- Direction of rotation controlled by long-life mechanical anti-return (> 10⁶ starts)
- Permanent magnet rotor
- UL, CSA, VDE approved, comply with IEC standards.



Applications

- Office equipment
- Medical equipment
- Motorised displays
- Moving light displays
- Pumps

Type

80 337 5 80 337 5

Voltage and frequency

230 V 50 Hz 230 V 50 Hz

Direction of rotation

Anti-clockwise Clockwise

Output speeds (rpm)

Output speeds (rpm)	Ratios (i)
24	25
14.40	41.66
9.60	62.5
7.20	83.33
4.80	125
2.40	250
1.20	500
0.80	750
0.24	2500

Part numbers

80 337 506	80 337 507
80 337 509	80 337 508
•	•
•	•
80 337 514	80 337 515
80 337 516	80 337 517
80 337 519	80 337 518
•	•
•	•
80 337 523	80 337 522

Standard gearbox shaft: see dimensions

General characteristics

Motor		82 330 5	82 330 5
Gearbox		81 037 0	81 037 0
Maximum permitted continuous rated gearbox output torque for 1 million gearbox revolutions	N.m	5	5
Radial load (static)	daN	2	2
Axial load (static)	daN	3	3
Absorbed power	W	3.5	3.5
Usable motor power	W	0.42	0.42
Maximum temperature rise	°C	55	55
Ambient temperature	°C	-5 +60	-5+60
Weight	g	480	480
Lead length (approx..)	mm	250	250
Protection		IP40	IP40

Options : for made to order products non stocked

Voltages / Frequencies	24-115 V 60 Hz	•	•
	24 V 50 Hz	•	•
	24-48 V 50 Hz	•	•
	115-230 V 50 Hz	•	•
80 round shaft 79 206 478 (see page 2/19)		•	•
For version with no anti-return (SAR version) see page 2/4		•	•

Made to order products, non stocked

Motor :

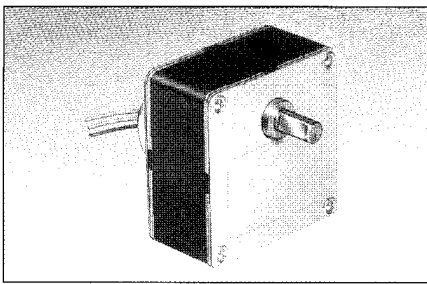
- other voltages/frequencies
- lead length

Gearbox :

- other output speeds
- special shaft
- ball bearing
- special lubrication

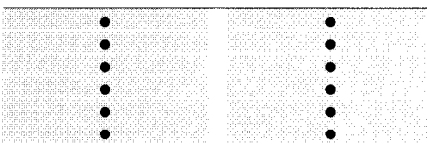
Other information

For basic principles, see page 2/4

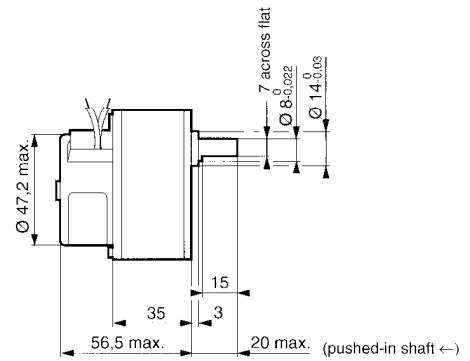
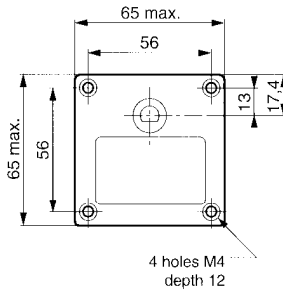


80 337 5	80 337 5
240 V 50 Hz	240 V 50 Hz
Anti-clockwise	Clockwise
80 337 524	80 337 533
80 337 534	80 337 525
•	•
•	•
80 337 528	80 337 537
80 337 529	80 337 538
80 337 539	80 337 530
•	•
80 337 541	80 337 532

82 330 5	82 330 5
81 037 0	81 037 0
5	5
2	2
3	3
3.5	3.5
0.42	0.42
55	55
-5+60	-5+60
480	480
250	250

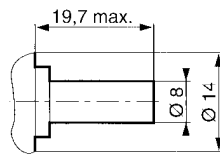


Dimensions
80 337 5



Shaft 79 206 478

(pushed-in shaft ←)



To order, specify :

Standard products

Part number

Example : Synchronous geared motor - 80 337 506

Standard products, non stocked

Type Voltage / frequency Direction of rotation Output speed Option

Example : Synchronous geared motor 80 337 5 - 115 V 50 Hz - Clockwise - 24 rpm

• Products available to order, please consult us