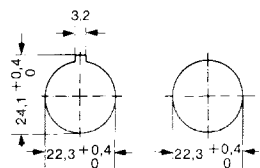
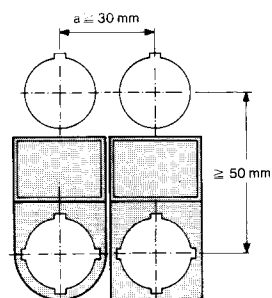


Dimensions

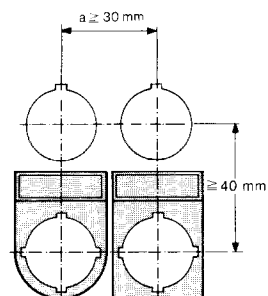
Mounting hole with/without cut-out



Grid dimensions to EN 50 007



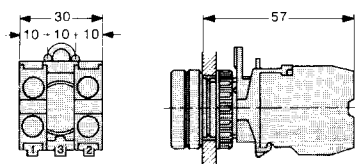
Minimum grid dimension



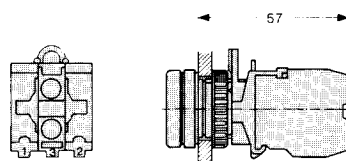
Minimum distance

| | |
|------------|-------|
| RPV | 33 mm |
| RP, MP | 35 mm |
| RPSR, MPSR | 35 mm |
| PL-RPV | 48 mm |

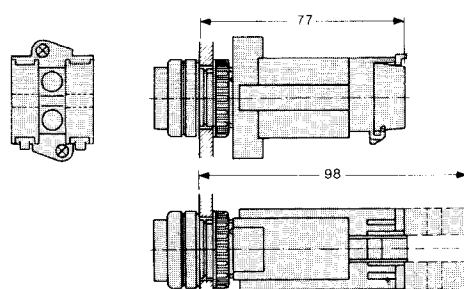
Front fixing Push buttons



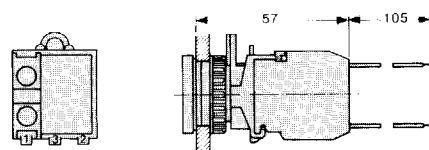
Indicator lamps/illuminated push-buttons



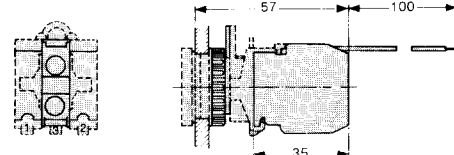
Indicator lamps/illuminated push-buttons with BFT... lamp transformer



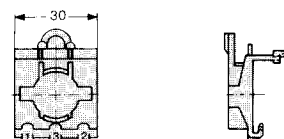
ET... lamp transformer for separate mounting, with blanking plug



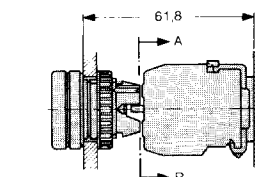
ER 6 resistor element for separate mounting, with blanking plug



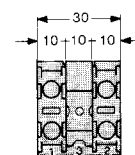
Fixing adapter



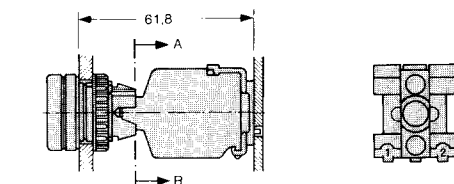
Base fixing Push-buttons



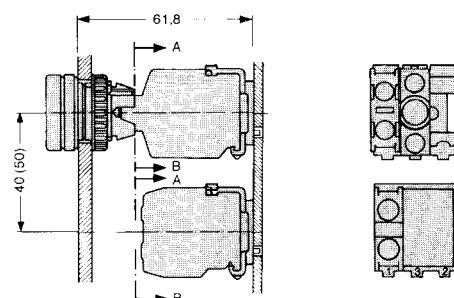
View A-B



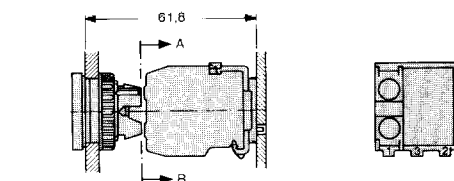
Indicator lamps/illuminated push-buttons



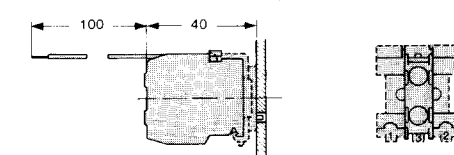
Indicator lamps/illuminated push-buttons with separate ET... lamp transformer



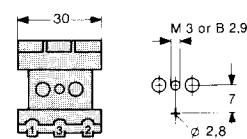
ET... lamp transformer for separate mounting, with blanking plug



ER 6 resistor element for separate mounting



Fixing adapter



Push-buttons, illuminated push-buttons, indicator lamps with telescopic bracket for indirect rear mounting

