
Emergency Lighting 6 W/640

Basic T5 Short EL | Tubular fluorescent lamps 16 mm, short, for emergency lighting



Areas of application

- Public buildings
- Industry
- Shops
- Supermarkets and department stores

Product benefits

- Very good luminous flux maintenance throughout the life of the lamp
- Optimized for emergency power operation
- Slim and compact

Product features

- Suitable for emergency power operation



Product datasheet

Technical data

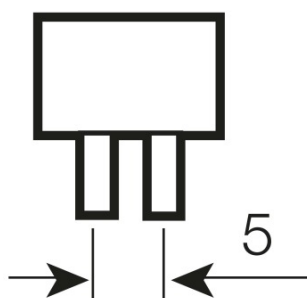
Electrical data

Nominal wattage	6.00 W
Rated lamp efficacy (HF data 25 °C)	Under clarification by authority and standardization body
Rated wattage	6.00 W

Photometrical data

Luminous flux at 25 °C	270 lm
Light color	640
Light color as per EN 12464-1	Cool White

Dimensions & weight



Tube diameter	16 mm
Length	212.0 mm
Length with base excl. base pins/connection	212.00 mm
Diameter	16.0 mm

Lifespan

Service life	4500 h
Lifespan	8000 h ¹⁾
Rated lamp life time	5000 h
Nominal lamp life time	5000 h

¹⁾ With CCG/LLCG

Additional product data

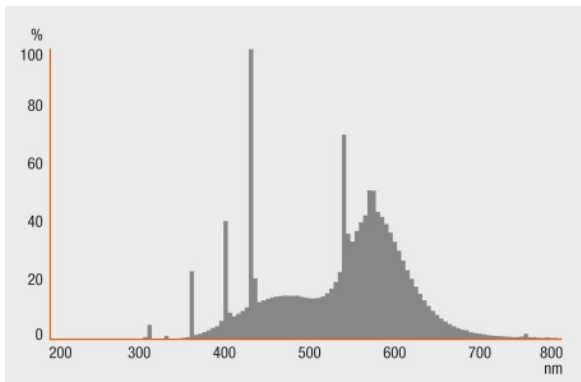
Base (standard designation)	G5
Lamp mercury content	2.5 mg
Appropriate disposal acc. to WEEE	Yes

Product datasheet

Certificates & standards

Energy efficiency class	A
Energy consumption	7 kWh/1000h

Light Distribution



Spectral power distribution

System guarantee

OSRAM System+ Guarantee in combination with OSRAM ECGs

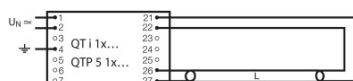


Guarantee

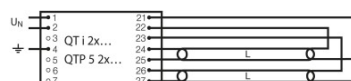
Product datasheet

Safety advice

In case of lamp breakage: www.osram.com/brokenlamp



Circuit diagram



Circuit diagram

Logistical Data

Product code	Product description	Packaging unit (Pieces/Unit)	Dimensions (height x width x length)	Volume	Gross weight
4008321152398	Emergency Lighting 6 W/640	Shipping carton box 25	105 mm x 115 mm x 248 mm	2.99 dm ³	824.50 g

The mentioned product code describes the smallest quantity unit which can be ordered. One shipping unit can contain one or more single products. When placing an order, for the quantity please enter single or multiples of a shipping unit.

References / Links

For more information on the system guarantee and the terms and conditions of the guarantee visit

▶ www.osram.com/system-guarantee

For more information on QUICKTRONIC electronic control gear go to

▶ www.osram.com/QUICKTRONIC

Disclaimer

Subject to change without notice. Errors and omission excepted. Always make sure to use the most recent release.