

Features

- Built in compliance with the construction and safety S1 specifications of standard EN 837-2
- Are designed for use with gaseous or liquid media which do not corrode copper alloy and which do not have high viscosity or do not crystallize
- Dial size 100 mm
- IP67
- Glycerine Filled
- Bottom connection
- Stainless Steel Case
- AISI 316L st.st. socket and bourdon tube
- Tempered glass window
- 1/2" BSP-Male
- Range 0/160 bar/psi

RS PRO Bourdon tube pressure gauges anti-vibration version

RS Stock No.: 152295



RS PRO is the own brand of RS. The RS PRO Seal of Approval is your assurance of professional quality, a guarantee that every part is rigorously tested, inspected, and audited against demanding standards. Making RS PRO the Smart Choice for our customers.

Product Description

Buy this product from www.rspro.com

These instruments are built in compliance with the construction and safety S1 specifications of standard EN 837-2.

They are designed for use on power station units, pump, hydro-cleaning machines, presses, engine compressors turbines, diesel engines, chemical, petrochemical and refrigerating plants and on machines and equipment where pulsating pressures or mechanical vibrations are apparent.

They can be used with gaseous or liquid media which do not corrode copper alloy and which do not have high viscosity or do not crystallize.

General Specifications

| | |
|-----------------------|--------------------------|
| Mounting Type | Bottom Entry |
| Display type | Analogue |
| Series | RS 1.04.3 |
| Case Material | Stainless Steel |
| Socket material | Copper alloy |
| Bourdon tube material | Copper alloy |
| Window Material | Tempered glass window |
| Ring Material | Stainless steel, crimped |
| Protection Degree | IP67 |

Mechanical Specifications

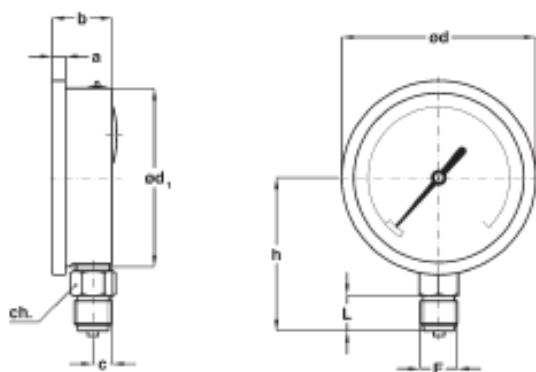
| | |
|----------------------------------|---|
| Pressure Range | 0 → 160 bar/psi |
| Working Pressure | 75% of FSV for static pressure; 66% of FSV for pulsating pressure |
| Maximum Pressure Measurement | 160 bar |
| Minimum Pressure Measurement | 0 bar |
| Connection Size | 1/2" BSP Male |
| Gauge Outside Diameter | 100 mm |
| Over pressure limit (15 min max) | 15% of FSV |
| Accuracy Class | 1,6 as per EN 837-1 |
| Minimum Operating Temperature | 0°C |
| Maximum Operating Temperature | +65°C |
| Calibrated | No |

Approvals

| | |
|---------------|---|
| Declarations | Directive 2014/68/EU - Pressure Equipment Directive (PED) |
| Standards Met | EN 837-1 |

Technical Specifications and Drawings

Filled Model – Bottom Connection



| F | a | b | c | d | d1 | h | L | Weight |
|---------|-----|----|----|-----|-----|----|----|---------|
| G 1/2 A | 7,5 | 34 | 11 | 110 | 101 | 87 | 20 | 0,63 kg |

Dimensions: mm