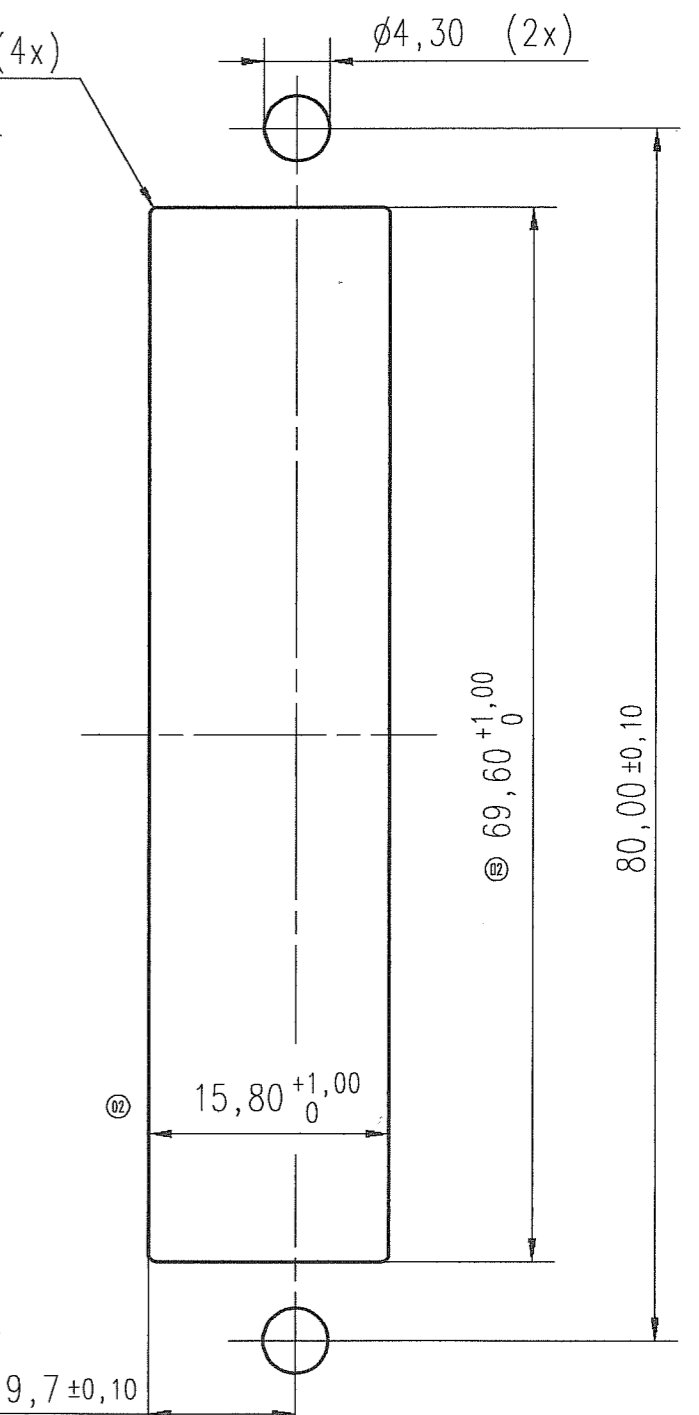
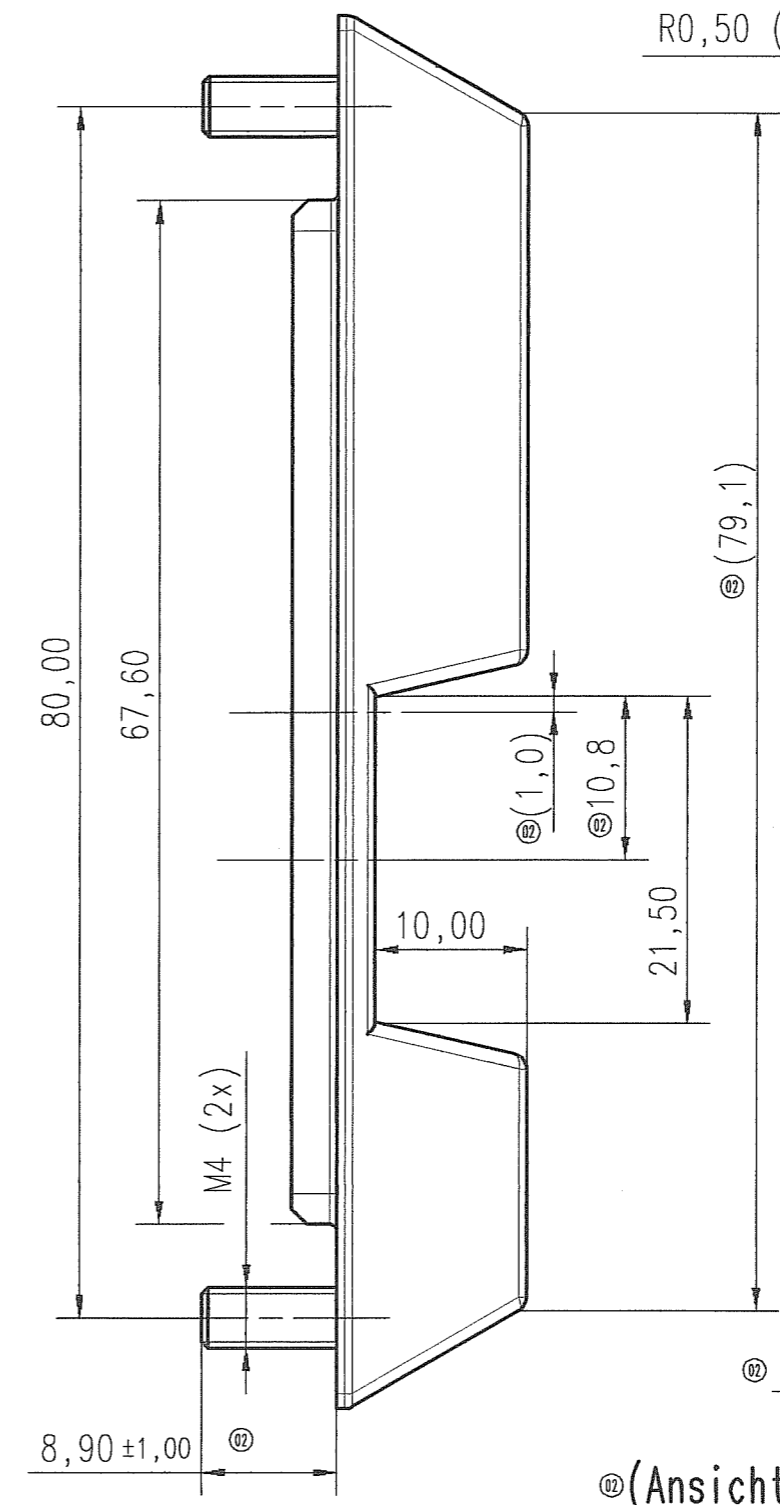
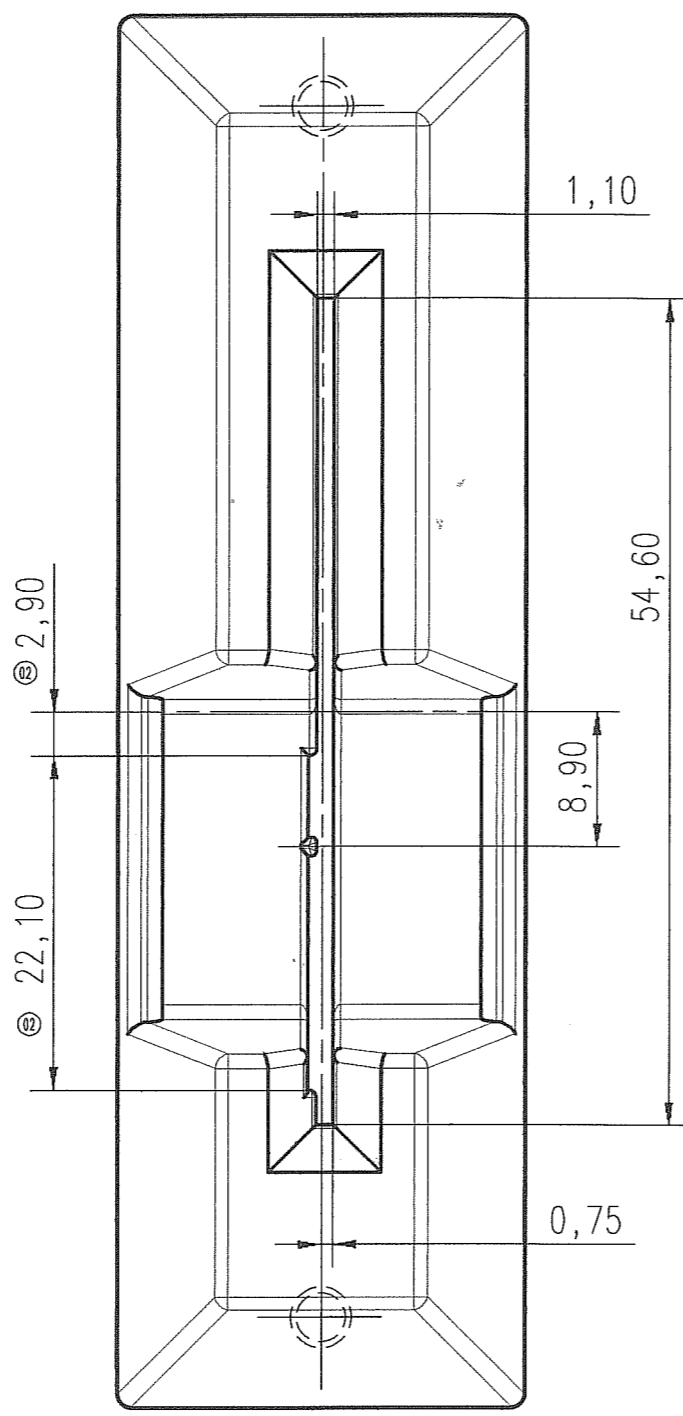
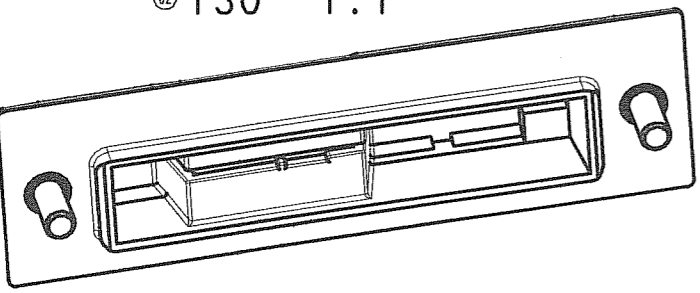
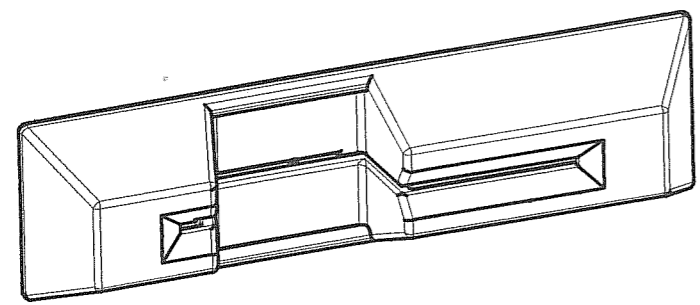
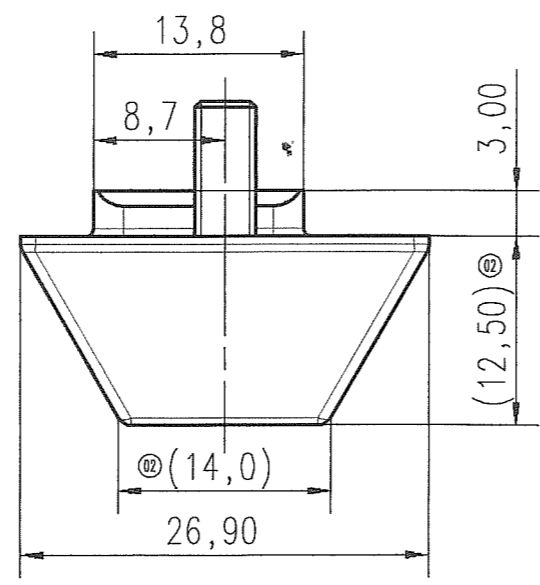


or communication of the contents thereof, are forbidden without express authority. Offenders are liable to the payment of damages. All rights are reserved in the event of the grant of a patent or the registration of the utility model or design.



- ② Montage nur mit gesteckter Max.-Karte nach ISO 7810
- ② mounting only with inserted maximum card according ISO 7810
- ② Anzugsdrehmoment für Muttern M4: max. 2,5 N
- ② starting torque for nut M4: max. 2,5 N



Montageausschnitt  
 (Ansicht von Montagerichtung Frontblende)  
 Panel cut-out  
 (view from bezel mount direction)

|  |  |                                   |  |   |  |
|--|--|-----------------------------------|--|---|--|
| Masse (errechnet)/Calc WT: 9               |  | Zul. Abw./Tolerances: ISO 2768-mH |  | Maßstab/Scale 2:1 (5:1) A3  |  |
| Prüfmaß/Testdimension                      |  | DIN/ISO 13715                     |  | CUSTOMER DRAWING  |  |
| Teileindex Partindexnumber                 |  | 00 Datum/Date Name                |  | Frontblende / Bezel mit Gewindestiften und Münzabweisung with threaded pins and coin projection |  |
|  |  | Gez. Drawn 30.10. Feeser          |  |   |  |
|  |  | Gepr. Checked 19.4.02 J.A.        |  |   |  |
| 02 200700262 12.04.07 Tol.                 |  | Amphenol-Tuchel Electronics GmbH  |  | M C702 G46 100 G2   |  |
| 01 200000727 07.09.00 Fs                   |  |                                   |  | Blatt/Sheet 1   |  |
| Index Änderung/Description Datum/Date Name |  |                                   |  | Ers. f./Replacement for: 1 Bl.  |  |