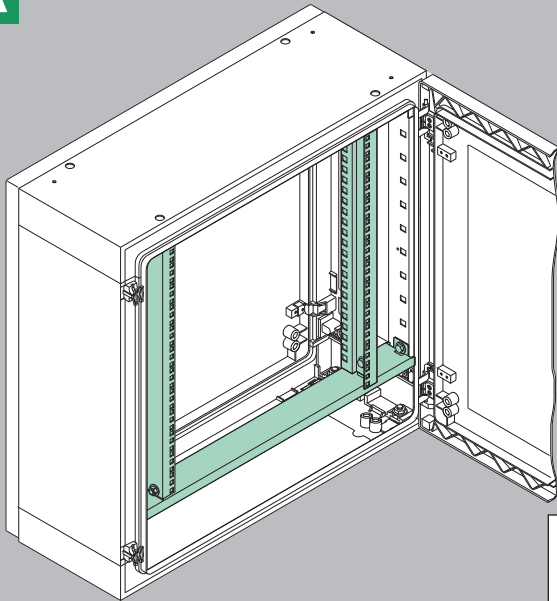
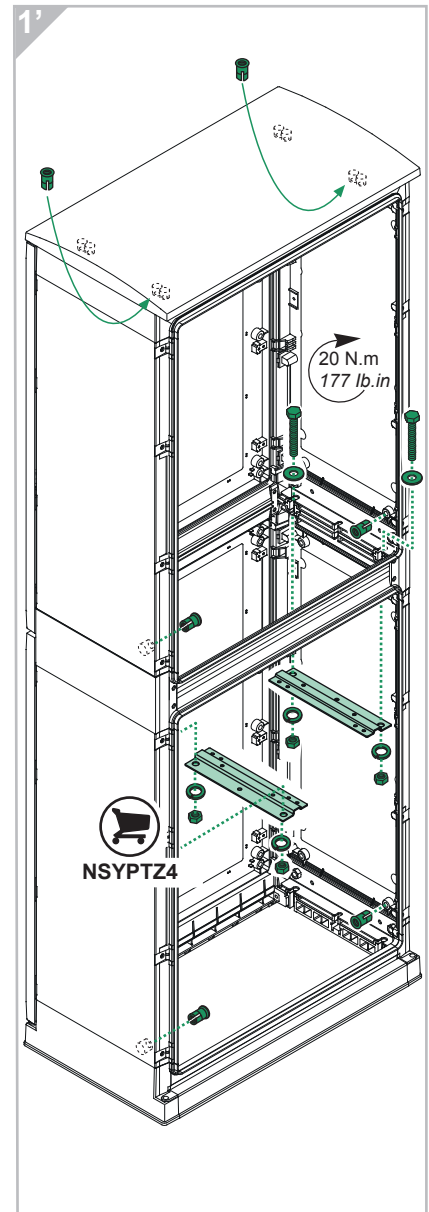
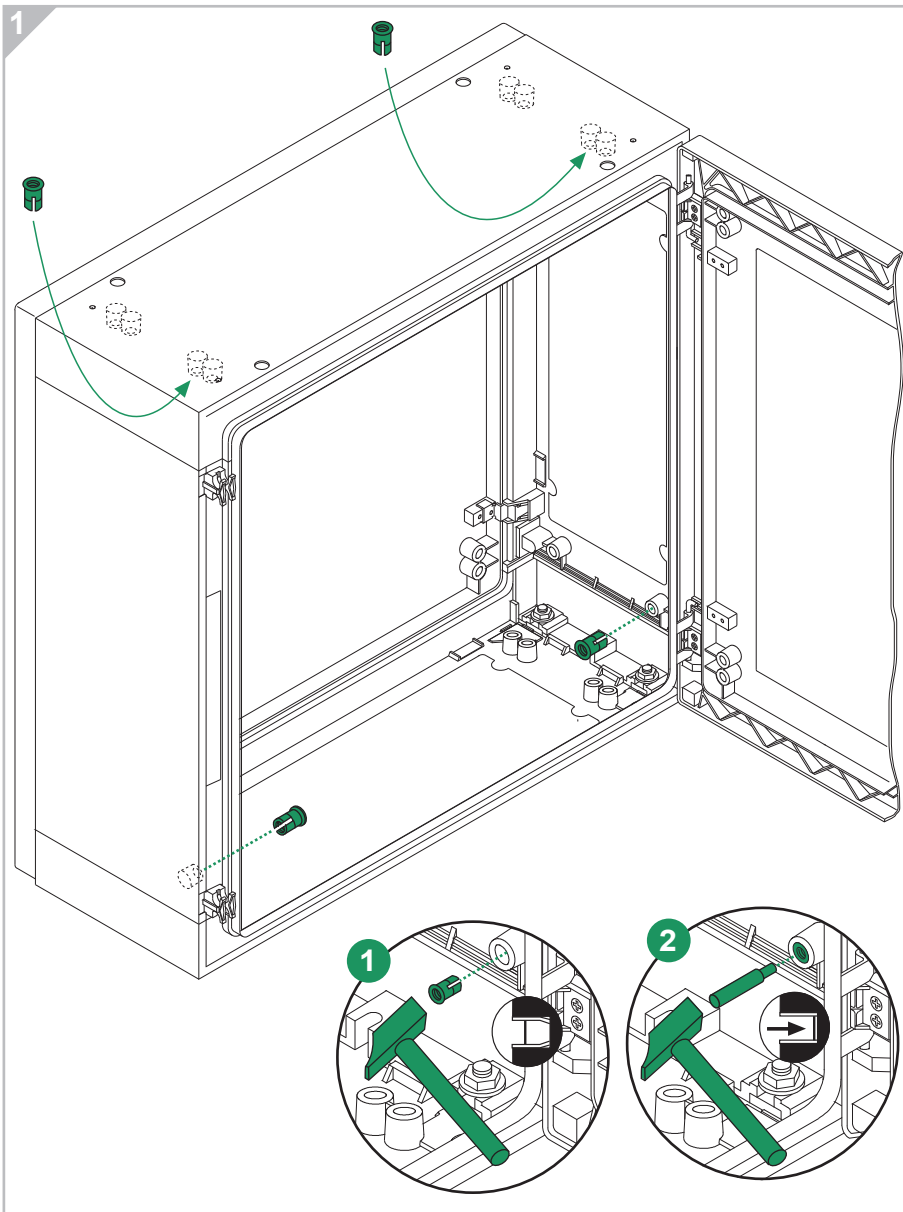


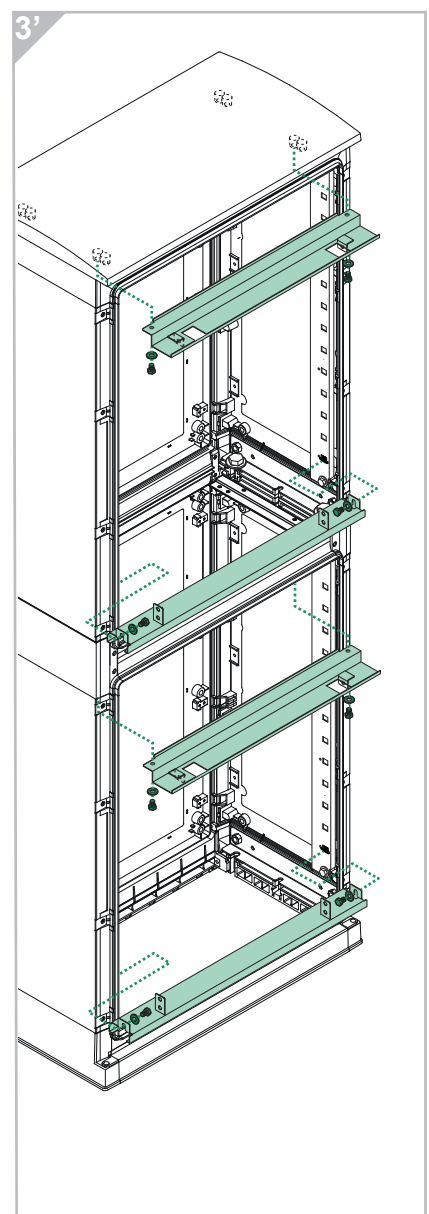
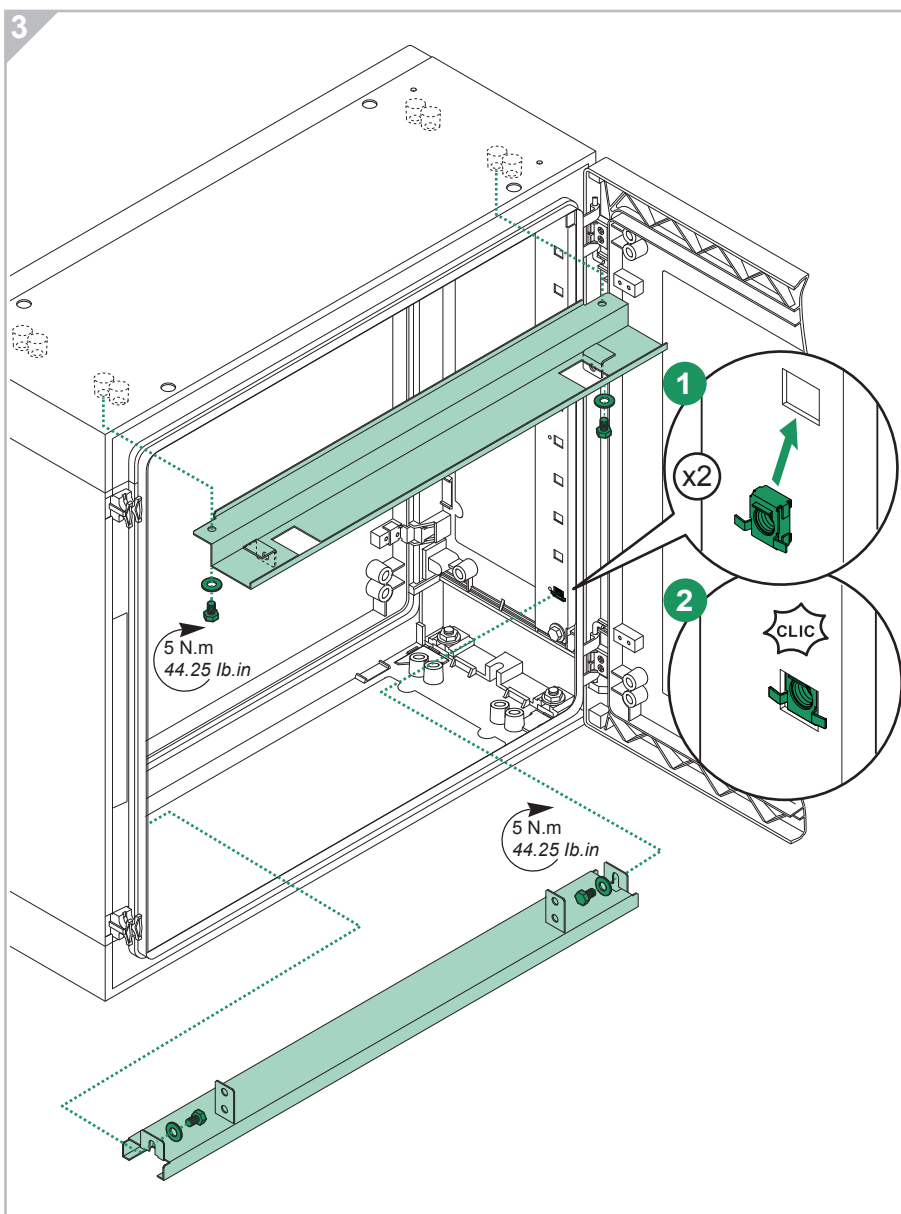
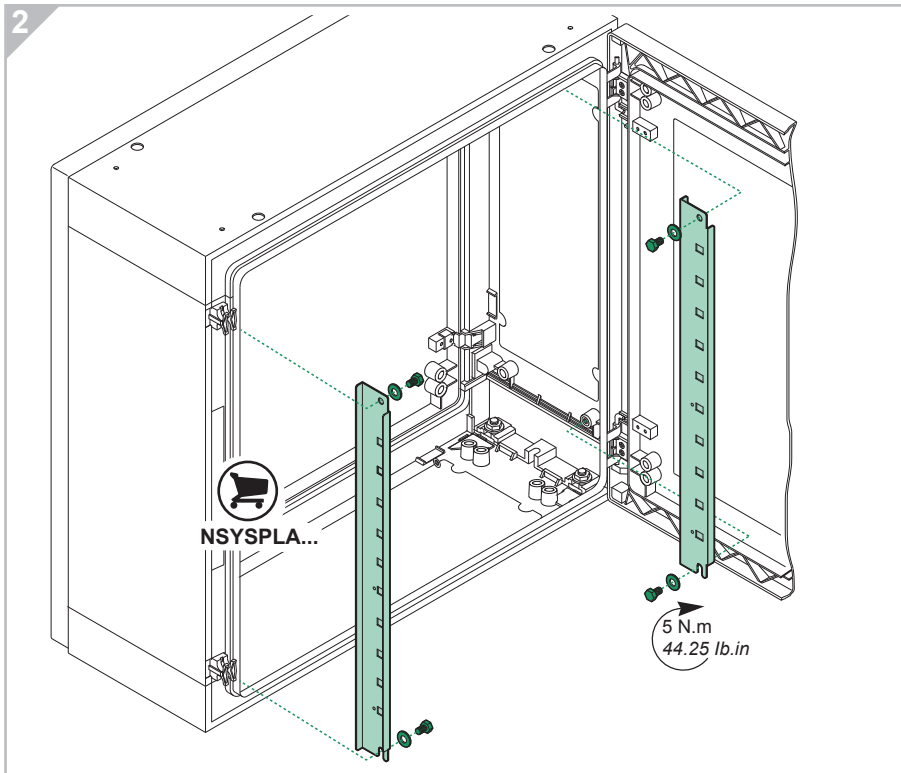
NSYBRF8PLAG
NSYBRF12PLAG
NSYBRF17PLAG
NSYBRF21PLAG
NSYBRF26PLAG

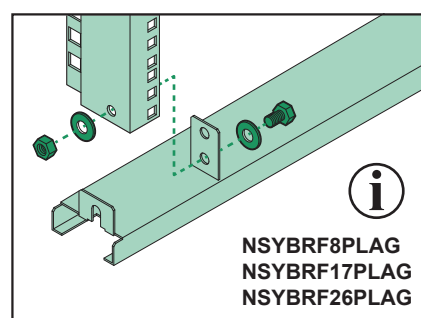
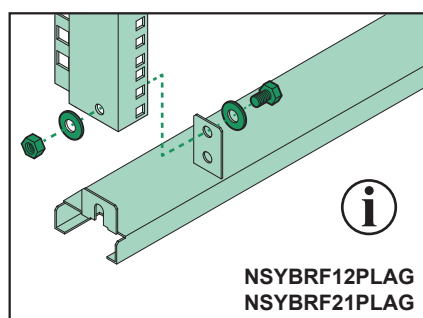
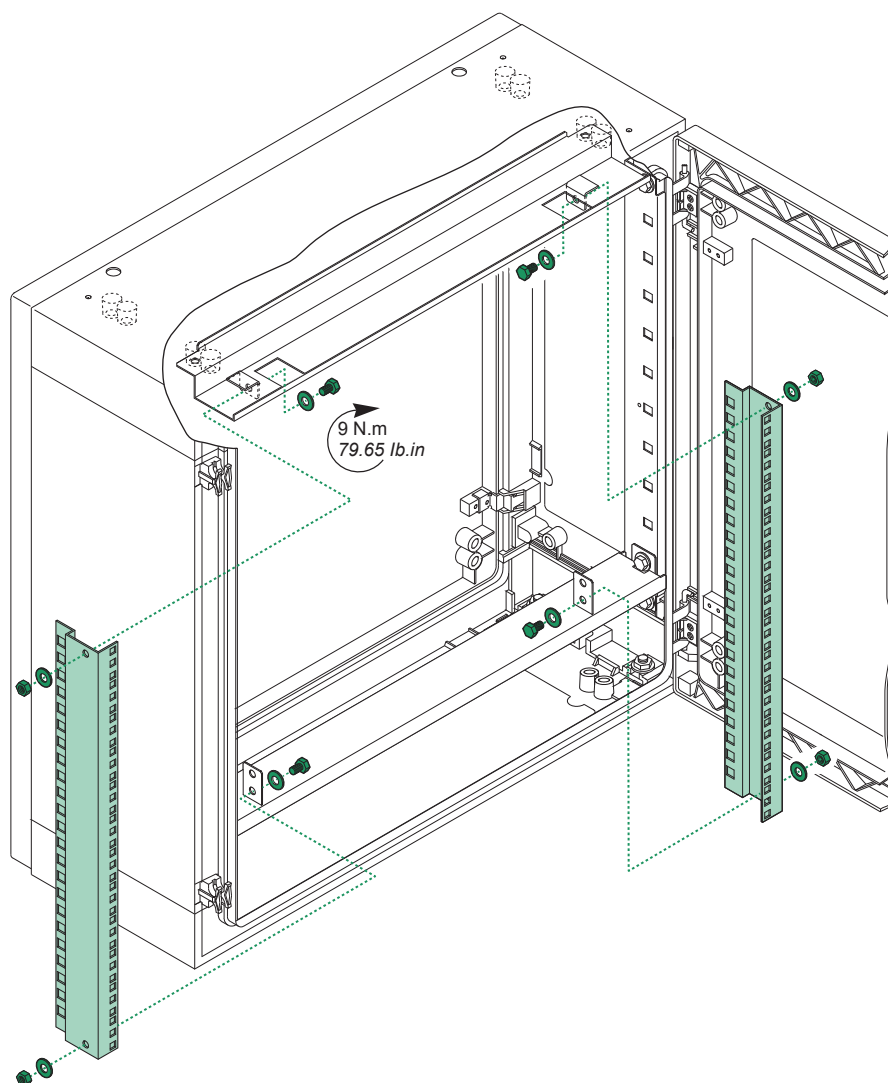
A



A (mm)	B (mm)	Reference	i
500	750	NSYBRF8PLAG	
750	750	NSYBRF12PLAG + NSYSPLA75	
1000	750	NSYBRF17PLAG + NSYSPLA100	
1250	750	NSYBRF21PLAG + NSYSPLA125	
1500	750	NSYBRF26PLAG + NSYSPLA150	
2000	750	2x NSYBRF17PLAG + 2x NSYSPLA100 + NSYPTZ4	







Schneider Electric Industries SAS

35, rue Joseph Monier
CS 30323
F- 92506 Reuil Malmaison Cedex

RCS Nanterre 954 503 439
Capital social 896 313 776 €
www.schneider-electric.com

QGH1082501-00

© 2016 - Schneider Electric - All rights reserved.

En raison de l'évolution des normes et du matériel, les caractéristiques indiquées par les textes et les images de ce document ne nous engagent qu'après confirmation par nos services.

As standards, specifications and designs change from time to time, please ask for confirmation of the information given in this publication.

Publication : Schneider Electric
Réalisation : Schneider Electric
Impression :



Ce document a été imprimé
sur du papier écologique.
This document has been
printed on ecological paper.