

2324305-1 ✓ ACTIVE

Sliver for SFF-TA-1002

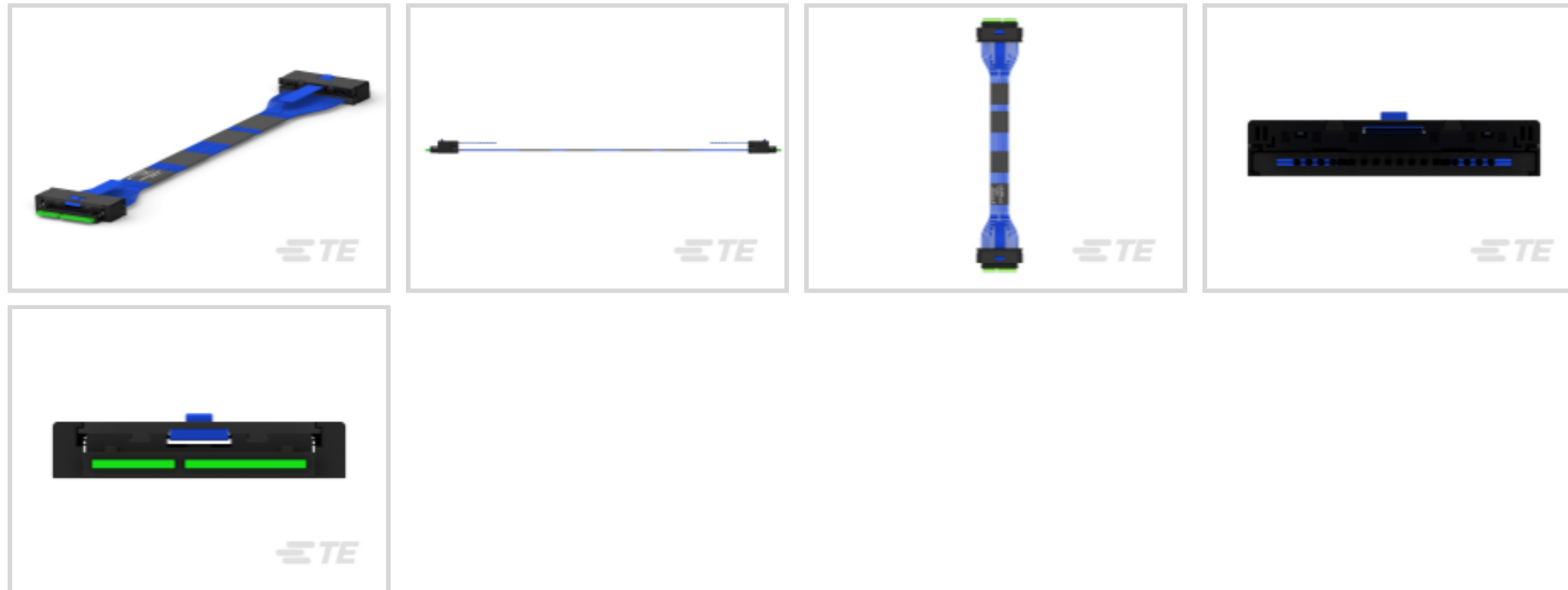
TE Internal #: 2324305-1

Sliver to Sliver Cable Assembly, 124 Position, Cable Assembly  
Length .5 m [1.6 ft], 16 Gb/s, 33 AWG, Sliver Plug End A, Sliver Plug  
End B, High Speed

[View on TE.com >](#)



Cable Assemblies > Copper Cable Assemblies > Internal I/O Cable Assemblies



Cable Assembly Type: **Sliver to Sliver**

Cable Assembly (End A): **Sliver Plug**

Cable Assembly (End B): **Sliver Plug**

Cable Style: **Discrete Pair**

Cable Assembly Category: **High Speed**

## Features

### Product Type Features

Cable Assembly Type	Sliver to Sliver
Cable Assembly (End A)	Sliver Plug
Cable Assembly (End B)	Sliver Plug
Cable Style	Discrete Pair
Cable Assembly Category	High Speed

### Configuration Features

Number of Positions	124
Number of Signal Positions	124

### Electrical Characteristics

Impedance	85 $\Omega$
-----------	-------------

### Signal Characteristics

Data Rate	16 Gb/s
-----------	---------

### Body Features

--	--



Cable Flammability Rating	CL2
---------------------------	-----

### Dimensions

Wire Size	33 AWG
-----------	--------

### Operation/Application

Halogen Free	No
--------------	----

### Other

Cable Assembly Configuration	Double Ended
------------------------------	--------------

Cable Assembly Length	.5 m[1.6 ft]
-----------------------	--------------

## Product Compliance

[For compliance documentation, visit the product page on TE.com>](#)

EU RoHS Directive 2011/65/EU	Compliant
------------------------------	-----------

EU ELV Directive 2000/53/EC	Compliant
-----------------------------	-----------

China RoHS 2 Directive MIIT Order No 32, 2016	有害物质含量符合标准要求 No Restricted Substance(s) Above Threshold
---	---

EU REACH Regulation (EC) No. 1907/2006	Current ECHA Candidate List: JUNE 2025 (250) Candidate List Declared Against: JUNE 2025 (250) Does not contain REACH SVHC
--	---

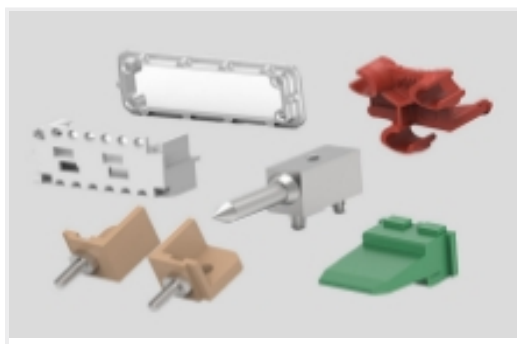
Halogen Content	Not Low Halogen - contains Br or Cl > 900 ppm.
-----------------	--

Solder Process Capability	Not reviewed for solder process capability
---------------------------	--

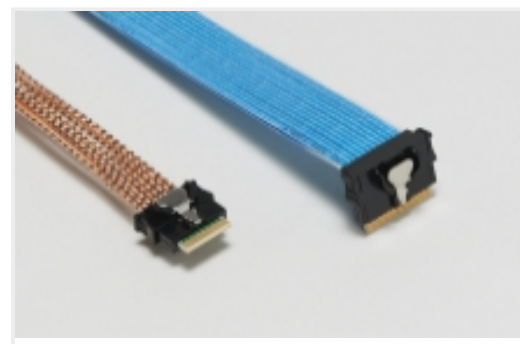
#### Product Compliance Disclaimer

This information is provided based on reasonable inquiry of our suppliers and represents our current actual knowledge based on the information they provided. This information is subject to change. The part numbers that TE has identified as EU RoHS compliant have a maximum concentration of 0.1% by weight in homogenous materials for lead, hexavalent chromium, mercury, PBB, PBDE, DBP, BBP, DEHP, DIBP, and 0.01% for cadmium, or qualify for an exemption to these limits as defined in the Annexes of Directive 2011/65/EU (RoHS2). Finished electrical and electronic equipment products will be CE marked as required by Directive 2011/65/EU. Components may not be CE marked. Additionally, the part numbers that TE has identified as EU ELV compliant have a maximum concentration of 0.1% by weight in homogenous materials for lead, hexavalent chromium, and mercury, and 0.01% for cadmium, or qualify for an exemption to these limits as defined in the Annexes of Directive 2000/53/EC (ELV). Regarding the REACH Regulation, the information TE provides on SVHC in articles for this part number is based on the latest European Chemicals Agency (ECHA) 'Guidance on requirements for substances in articles' posted at this URL: <https://echa.europa.eu/guidance-documents/guidance-on-reach>

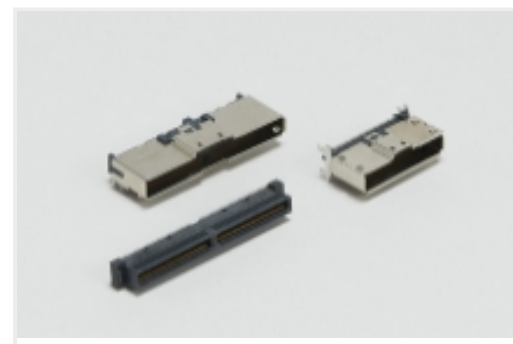
Also in the Series | [Sliver for SFF-TA-1002](#)



Connector Hardware(1)

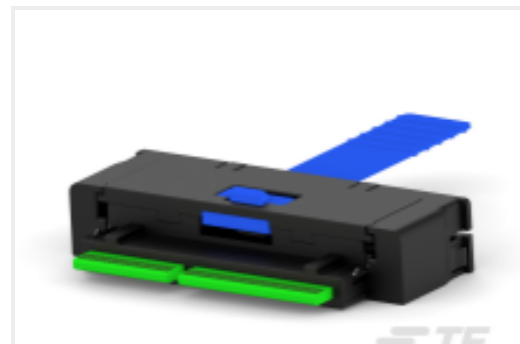
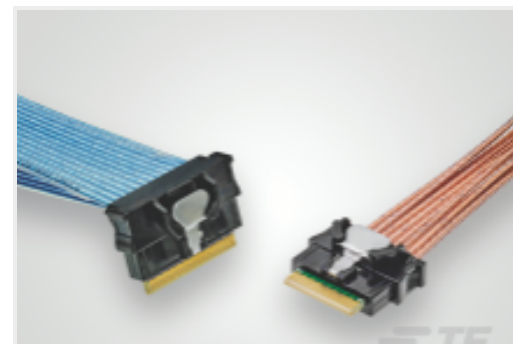


Internal I/O Cable Assemblies(105)



Internal I/O Connectors(133)

## Customers Also Bought

TE Part #2317823-1  
CABLE PLUG KIT, SLIVER 74PTE Part #2339107-1  
124PIN SLIVER PLUG KIT.TE Part #2821385-1  
SLIVER C/A, 74P, R/A TO R/A, 10GHZ,  
85OHM

## Documents

### Product Drawings

[C/A, SLIVER 124P, STR TO STR](#)

English

### CAD Files

[3D PDF](#)

3D

Customer View Model

[ENG\\_CVM\\_CVM\\_2339107-1\\_A.2d\\_dxf.zip](#)

English

Customer View Model

[ENG\\_CVM\\_CVM\\_2339107-1\\_A.3d\\_igs.zip](#)

English

Customer View Model

[ENG\\_CVM\\_CVM\\_2339107-1\\_A.3d\\_stp.zip](#)

English

By downloading the CAD file I accept and agree to the [Terms and Conditions](#) of use.

### Datasheets & Catalog Pages

[Sliver Internal Cabled Interconnect Solutions Brochure \(Chinese\)](#)

### Product Specifications

[Product Specification](#)

English