

IEC Appliance Inlet C14 or C18, sandwich Mounting, PCB- or Solder Terminal

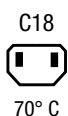
V-Lock



Snap-in mounting



Screw-on mounting

**Description**

- Panel Mount:
Snap-in or screw-on mounting on PCB, sandwich or rear-side
- Appliance Inlet, Pin temperature 70 °C, protection class I or II
- For PCB mounting

Approvals

- VDE Certificate Number: 40012767
- UL File Number: E96454
- CSA File Number: 38456

Other versions on request

- With solder terminals
- Types for enhanced glow wire test requirements acc. IEC 60695-2-12 and -13 for the use in unattended household equipment acc. IEC 60335-1
- Variant with notch for V-Lock mating Cordsets

Weblinks

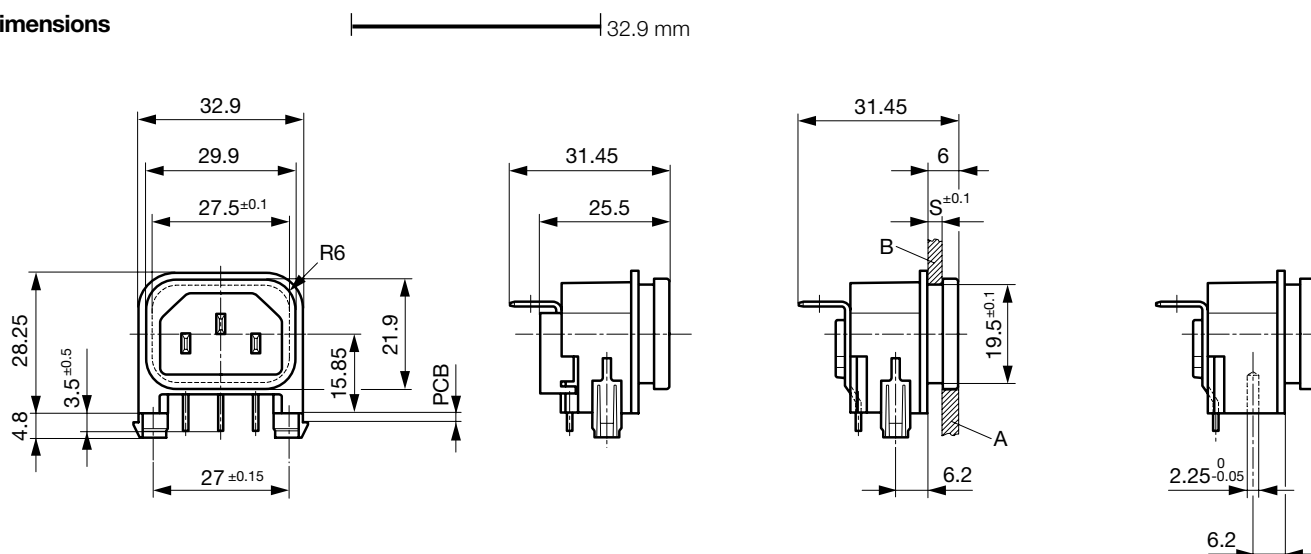
[pdf](#), [html](#), [General Product Information](#), [Approvals](#), [RoHS](#), [CHINA-RoHS](#), [Mating Connectors](#), [e-Shop](#), [SCHURTER-Stock-Check](#), [Distributor-Stock-Check](#), [Accessories](#), [Detailed request for product](#)

Newly available variants corresponding to V-Lock mating cordset. The connector is equipped with a notch intended for use with the latching cordset. The cord latching system prevents against accidental removal of the cordset.

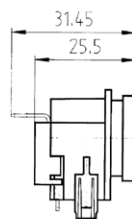
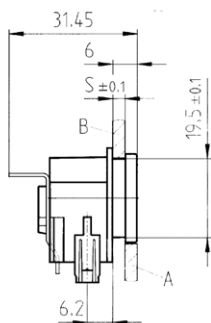
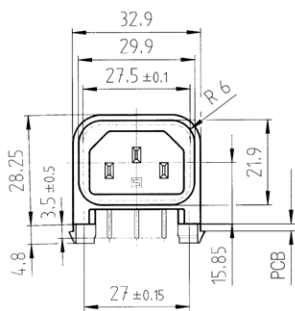
Technical Data

Ratings IEC	10A / 250VAC; 50Hz
Ratings UL/CSA	15A / 250VAC; 60Hz
Dielectric Strength	> 3kVAC between L-N > 3kVAC between L/N-PE (1 min/50Hz)
Allowable Operation Temp.	-25 °C to 70 °C
Degree of Protection	from front side IP 40 acc. to IEC 60529
Protection Class	Suitable for appliances with protection class 1 or 2 acc. to IEC 61140
Terminal	For PCB mounting ; Ground terminal: angled to pin axis Solder terminal on request
Panel Thickness s	Sandwich/rear-side: 1.5/2/2.5/3 mm
Material: Housing	Thermoplastic, black, UL 94V-0

Appliance Inlet	C14 acc. to IEC/EN 60320-1, UL 498, CSA C22.2 no. 42 (for cold conditions) pin-temperature 70 °C, 10A, Protection Class 1 or 2
-----------------	--

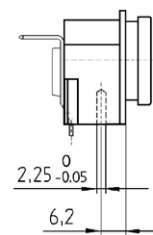
Dimensions

Snap-in mounting

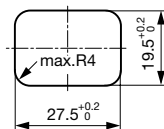
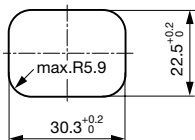


with insulation cover

Screw on PCB mounting



Groundterminal in connector axis

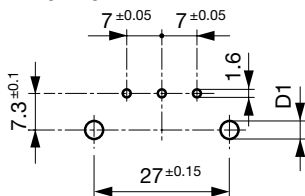


Rear panel mounting

Sandwich mounting

Drilling diagrams

Drilling diagram



d1 = 6 ± 0.05 for Snap-in mounting
 d1 = 3.6 ± 0.05 for screw-on mounting
 with self-tapping screws
 3 mm (EJOT-PT), 2 screws enclosed

Variants

Protection Class	PCB mounting	Panel Thickness s [mm]	Ground terminal 4.8 x 0.8 mm	Cover	Order Number
1	Screw	1	in connector axis		GSP2.9103.11
1	Screw	1.5	in connector axis		GSP2.9103.13
1	Screw	2	in connector axis		GSP2.9103.14
1	Screw	2.5	in connector axis		GSP2.9103.15
1	Screw	3	in connector axis		GSP2.9103.16
1	Screw	1.5	in connector axis	●	GSP2.9113.13
1	Screw	2	in connector axis	●	GSP2.9113.14
1	Screw	2.5	in connector axis	●	GSP2.9113.15
1	Screw	3	in connector axis	●	GSP2.9113.16
1	Snap-in	1.5	90° to connector axis		GSP2.9205.13
1	Snap-in	1.5	90° to connector axis		GSP2.9901.13
1	Snap-in	1	in connector axis		GSP2.9203.11
1	Snap-in	1.2	in connector axis		GSP2.9203.12
1	Snap-in	1.5	in connector axis		GSP2.9203.13
1	Snap-in	1.5	in connector axis		GSP2.9903.13

Protection Class	PCB mounting	Panel Thickness s [mm]	Ground terminal 4.8 x 0.8 mm	Cover	Order Number
1	Snap-in	2	in connector axis		GSP2.9203.14
1	Snap-in	2.5	in connector axis		GSP2.9203.15
1	Snap-in	2.5	in connector axis		GSP2.9213.15
1	Snap-in	3	in connector axis		GSP2.9203.16
1	Snap-in	1.5	in connector axis	●	GSP2.9213.13
1	Snap-in	2	in connector axis	●	GSP2.9213.14
1	Snap-in	3	in connector axis	●	GSP2.9213.16
2	Screw	1.5	-		GSP2.9100.13
2	Screw	3	-		GSP2.9100.16
2	Screw	2	-	●	GSP2.9110.14
2	Screw	2.5	-	●	GSP2.9110.15
2	Snap-in	1.5	-		GSP2.9200.13
2	Snap-in	2.5	-		GSP2.9200.15
2	Snap-in	1.5	-	●	GSP2.9210.13
2	Snap-in	2	-	●	GSP2.9210.14
2	Snap-in	2.5	-	●	GSP2.9210.15
2	Snap-in	3	-	●	GSP2.9210.16

Additional version on request, e.g.: Ground terminal straight or quick-connect terminal 6,3 x 0,8 mm

Suffix ".21" corresponds to the version with V-Lock mating cordset. The connector is equipped with a notch intended for use with the latching cordset. The cord latching system prevents against accidental removal of the cordset.

Packaging unit 50 Pcs

Mating Outlets/Connectors

Category / Description

Connector Overview complete



IEC Connector C15, Rewireable, Straight	0101
IEC Connector C15A, Rewireable, Straight	0102
IEC Connector C15A, Rewireable, Straight	0102-G
IEC Connector C15A, Rewireable, Angled	0112
IEC Connector C13, Rewireable, Angled	4012

[Connector further types toGSP2](#)

...



Interconnection Cord Overview complete

Interconnection Cord C13, 10 A	6007.0212
Interconnection Cord C13, 10 A	6007.0214

[Interconnection Cord further types toGSP2](#)

Power Cord Overview complete



Power Cord with IEC Connector C13, Angled	0311
Power Cord with IEC Connector C13, Angled	3011
Power Cord with IEC Connector C13, Angled	3012
Power Cord with IEC Connector C13, Angled	3013
Power Cord with IEC Connector C13	3020

[Power Cord further types toGSP2](#)

...

Power Supply Cord Overview complete



Power Supply Cord with IEC Connector C13 straight, stripped end	6000.0214
Power Supply Cord with IEC Connector C13 angled, stripped end	6000.0224
EU Power Supply Cord with IEC Connector C13, straight	6003.0215
EU Power Supply Cord with IEC Connector C13, straight	6004.0215
US Power Supply Cord with IEC Connector C13, straight	6009.1315

[Power Supply Cord further types toGSP2](#)

...

Category / Description[Power Supply or Interconnection Cord Overview complete](#)

Diverse Power Supply and Interconnection Cords 10 A	6003.0204
Diverse Power Supply and Interconnection Cords 10 A	6003.0205
Diverse Power Supply and Interconnection Cords 10 A	6026.0205
UK Power Supply Cord with stripped ends	6044.0204
Diverse Power Supply and Interconnection Cords 10 A	6045.0114
Power Supply or Interconnection Cord further types toGSP2	...