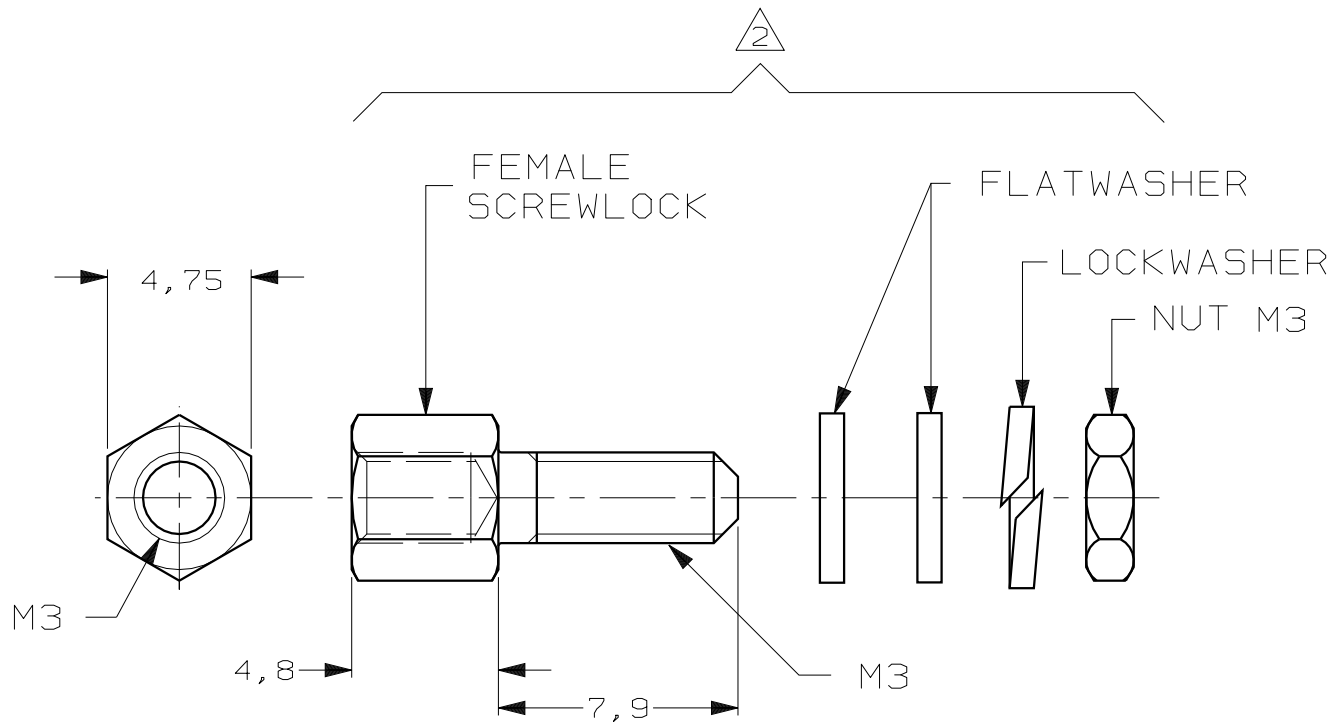
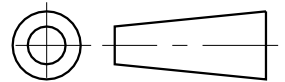


DO NOT SCALE

DIMENSIONS IN mm

METRIC

THIRD ANGLE
PROJECTION



- NOTES: 1 PARTS PACKAGED UNASSEMBLED
 2 THIS KIT CONTAINS TWO SCREWLOCK ASSEMBLIES
 3 BULKPACKAGE CONSISTS OF 50 KITS
 PLEASE ORDER IN UNITS OF 50 KITS
 4 FOR MOUNTING INSTRUCTIONS SEE I-042-087
 5 215073-1 SUPERSEDED BY 215073-2.

B	ECR-05-013427	JvdH	JB	19 OCT 05
LTR.	REVISION RECORD	DR.	CHK.	DATE

BULKPACKAGED ³	BRIGHT TINPLATED	STEEL	215073-2
BULKPACKAGED ³	ZINC YELLOW CHROMATE		215073-1
DESCRIPTION	FINISH	MATERIAL	PARTNUMBER

CUSTOMER DRAWING FOR REFERENCE ONLY WILL NOT BE UPDATED			AMP-HOLLAND B.V. 's-Hertogenbosch, The Netherlands.	
	THIS DRAWING IS UNPUBLISHED		RELEASED FOR PUBLICATION _____, 19__	
	© COPYRIGHT 19__ BY AMP-HOLLAND B.V. ALL INTERNATIONAL RIGHTS RESERVED. AMP PRODUCTS MAY BE COVERED BY U.S. AND FOREIGN PATENTS AND/OR PATENTS PENDING.			

DR. P.D. JÄGER	DATE 10-04-089	WIRE RANGE -	NAME AMPLIMITE, KIT, FEMALE SCREWLOCK ASSEMBLY M3	REV. DATE D M Y 10 04 89
CHK. -	DATE -	INSUL. RANGE -	DWG. No. 215073	REV. LTR. B
APP. -	DATE -	SIZE A4	SHEET 1 OF 1	