

## Features

- Maximum operating pressure is 12 bar.
- Operating temperature range -20°C to +100°C.
- Material: Brass / Steel / Aluminium with Zinc and Nickel-Plated Finish
- 2- Stage Security for additional safety
- ISO 4414
- British Profile DN5.5
- Compatible with:  
PCL 60  
PARKER - RECTUS 19

## RS PRO Pneumatic Quick Connect Coupling

RS Stock No.: 0325511



RS PRO is the own brand of RS. The RS PRO Seal of Approval is your assurance of professional quality, a guarantee that every part is rigorously tested, inspected, and audited against demanding standards. Making RS PRO the Smart Choice for our customers.

## Product Description

### RS PRO Series 19S Safety Quick Connect Couplings

Security is provided by pressing the button two times or by left-right sleeve twist. First press/twist releases the pressure inside the coupling and the second press/twist ejects the plug for disconnection.

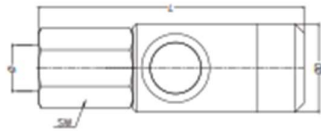
Pneumatic quick-connect coupling connectors are found across industry in pneumatic systems as diverse as robotic assembly lines and other equipment.

- Maximum operating pressure is 12 bar.
- Operating temperature range -20°C to +100°C.
- Material: Brass / Steel / Aluminium with Zinc and Nickel-Plated Finish
- 2- Stage Security for additional safety
- ISO 4414
- British Profile DN5.5
- Compatible with:
  - PCL 60
  - PARKER - RECTUS 19

## Specifications

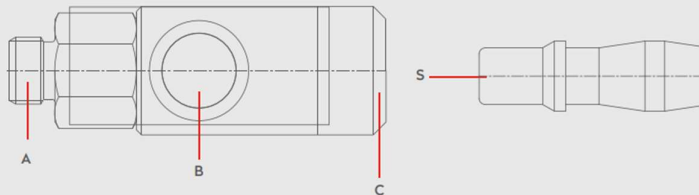
Manufacturer Series	019S
Coupling Type	Quick Connect Coupling Socket
Connection Standard	DN 5.5 ISO 4414 British Profile
Connection Standard Compatible With	PCL 60; PARKER – RECTUS 19
Minimum Operating Temperature	-20°C
Maximum Operating Temperature	+100°C
Maximum Operating Pressure	12bar
Flow	2-Stage
Flow Direction & Sealing	Self-sealing coupling
Material	Brass, Steel, Aluminium
Finish	Nickel Plated
Connection Type	Threaded
Thread Size	3/8 in
Thread Standard	G
Thread Gender	Female
Coupling Gender	Female
Threaded Connection	G 3/8 Female
Seal material	Nitrile Rubber
Hose Barb Connection	N/A

## Specifications



Dimensions (mm)		
SW	L	ØD
20	72	26

### Materials



### Material Code

A = Brass Nickel Plated

B = Steel Zinc Plated

C = Aluminium

S = Steel Nickel Plated

## Series 19S Quick Connect Couplings



0 - 12 bar  
( 0-174 PSI )



-20° to + 100°C (NBR)  
-4° to + 212°F

Shut Off  
Type



OM 178 - 00765  
OM 178 - 00410  
OM 200 - 00800

2 - STAGE

ISO 4414

DN

5.5 mm