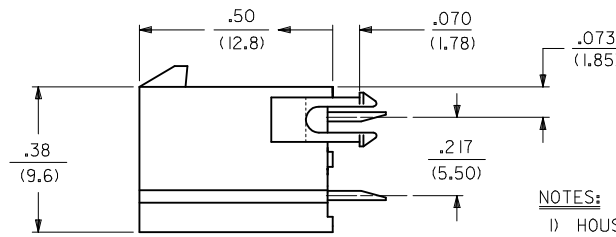
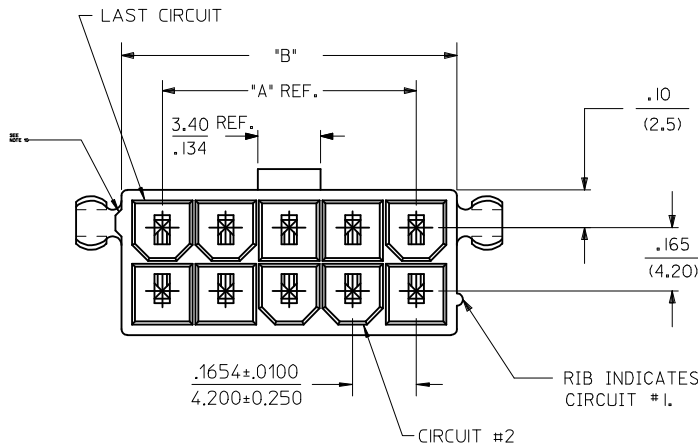
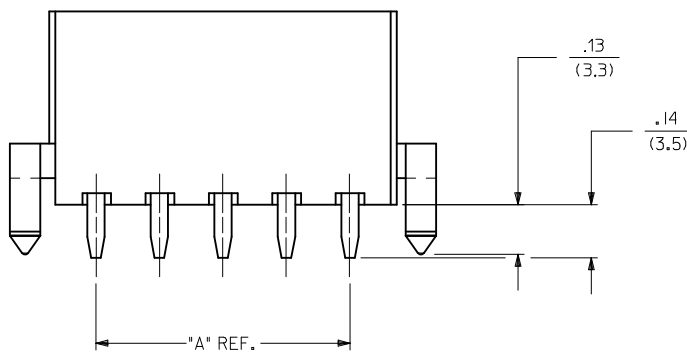


CIRCUIT SIZE	DIM. "A"	DIM. "B"	DIM. "C"
2	—	.21 (5.4)	.370 (9.40)
4	.17 (4.2)	.38 (9.6)	.535 (13.60)
6	.33 (8.4)	.54 (13.8)	.701 (17.80)
8	.50 (12.6)	.71 (18.0)	.866 (22.00)
10	.66 (16.8)	.87 (22.2)	1.031 (26.20)
12	.83 (21.0)	1.04 (26.4)	1.197 (30.40)
14	.99 (25.2)	1.20 (30.6)	1.362 (34.60)
16	1.16 (29.4)	1.37 (34.8)	1.528 (38.80)
18	1.32 (33.6)	1.54 (39.0)	1.693 (43.00)
20	1.49 (37.8)	1.70 (43.2)	1.858 (47.20)
22	1.65 (42.0)	1.87 (47.4)	2.024 (51.40)
24	1.82 (46.2)	2.03 (51.6)	2.189 (55.60)



NOTES:

- HOUSING MATERIAL:  
V-2 = NYLON 6/6, UNFILLED U.L. 94V-2, COLOR: NATURAL.  
V-0 = NYLON 6/6, UNFILLED U.L. 94V-0, COLOR: NATURAL.  
GW V-0 = NYLON UL94V-0, COLOR: BLACK  
IEC 60335-1 4TH EDITION GLOW WIRE CAPABLE  
TERMINAL MATERIAL: COPPER ALLOY.
  - TERMINAL PLATING:  
TIN = .000100/(.00254) MIN. MATTE TIN OVER .000050/(.00127) MIN. NICKEL OVERALL  
GOLD = .000030/(.00080) MIN. SELECT GOLD, .000100/(.00254) MIN. MATTE TIN OVER .000050/(.00127) MIN. NICKEL OVERALL
  - PRODUCT SPECIFICATION: PS-45750-001
  - PACKAGING SPECIFICATION: PK-5566-001.
  - PART MATES WITH MINI-FIT JR. RECEPTACLE NO. 5557.
  - PART ARE NOT TO BE MATED OR UN-MATED WHILE CIRCUITS ARE LIVE.
  - PARTS TO HAVE "HCS+" MARKING
  - PART CONFORMS TO CLASS B OF COSMETIC SPECIFICATION PS-45499-002 WITH THE EXCEPTION OF DISCOLORATION, FLASH, AND SINK MEET CLASS "C" REQUIREMENTS.
  - PART IS NOT DESIGNED FOR CURRENT SHARING.
  - ANTI-SHINGLING RIB MAY OR MAY NOT APPEAR ON HOUSINGS.
- LOCATION OF .118/3.00 DIAMETER HOLES ON P.C. BOARD IS FOR OPTIONAL PEGS.



<b>ADD NOTE 11</b> IEC NO: UCP2014-4789 DRWN: DFOX 2014/06/02 CHKD: JBELL 2014/06/02 APPR: FSMITH 2014/06/23	QUALITY SYMBOLS ▽=0 ▽=0 ▽=0	GENERAL TOLERANCES (UNLESS SPECIFIED)		DIMENSION STYLE IN/MM		SCALE 4:1	DESIGN UNITS METRIC	THIRD ANGLE PROJECTION		
		mm		INCH		DRAWN BY TGREGORI	DATE 2006/04/27	TITLE <b>VERTICAL HEADER ASSEMBLY DUAL ROW MINI-FIT PLUS HCS SERIES</b> <b>molex</b>		
		4 PLACES ±---		±---		CHECKED BY JCOMERCI				
		3 PLACES ±---		±.010		APPROVED BY FSMITH		DATE 2010/04/09		DOCUMENT NO. SD-46015-001
2 PLACES ±0.25		±.020		MATERIAL NO. SEE TABLE		SHEET NO. 1 OF 2				
1 PLACE ±0.50		±---		DRAFT WHERE APPLICABLE MUST REMAIN WITHIN DIMENSIONS						
0 PLACE ±---		±---		THIS DRAWING CONTAINS INFORMATION THAT IS PROPRIETARY TO MOLEX INCORPORATED AND SHOULD NOT BE USED WITHOUT WRITTEN PERMISSION						

13		12		11		10		9		8		7		6		5		4		3		2		1																																																																																																																																																																																																																																																																																																																																																																																																																																																																																																																																																																																																																																																																																																																																																																																																																																																																																																																																																																																																																																																																																																																																																																																																																																																																																																																																																																																																																																																																																																																																																																							
ITEM NO.	CKT SIZE	HOUSING MATERIAL	PEGS	PLATING														ITEM NO.	CKT SIZE	HOUSING MATERIAL	PEGS	PLATING																																																																																																																																																																																																																																																																																																																																																																																																																																																																																																																																																																																																																																																																																																																																																																																																																																																																																																																																																																																																																																																																																																																																																																																																																																																																																																																																																																																																																																																																																																																																																																									
46015-0202	2	V-0	NO	TIN	J	46015-0203	YES	I	46015-0206	V-2	NO	H	46015-0207	YES	G	46015-0211	GW V-0	YES	F	46015-0209	V-0	YES	E	46015-0210	GW V-0	YES	D	46015-0212	V-0	NO	C	46015-1402	14	V-0	NO	B	46015-1403	YES	A	46015-1406	V-2	NO	J	46015-1407	YES	I	46015-1409	V-0	YES	H	46015-1412	NO	G	46015-1602	16	V-0	NO	F	46015-1603	YES	E	46015-1606	V-2	NO	D	46015-1607	YES	C	46015-1609	V-0	YES	B	46015-1612	NO	A	46015-1802	18	V-0	NO	J	46015-1803	YES	I	46015-1806	V-2	NO	H	46015-1807	YES	G	46015-1809	V-0	YES	F	46015-1812	NO	E	46015-2002	20	V-0	NO	D	46015-2003	YES	C	46015-2006	V-2	NO	B	46015-2007	YES	A	46015-2009	V-0	YES	J	46015-2012	NO	I	46015-2202	22	V-0	NO	H	46015-2203	YES	G	46015-2206	V-2	NO	F	46015-2207	YES	E	46015-2209	V-0	YES	D	46015-2212	NO	C	46015-2402	24	V-0	NO	B	46015-2403	YES	A	46015-2406	V-2	NO	J	46015-2407	YES	I	46015-2409	V-0	YES	H	46015-2412	NO	G					F					E					D					C					B					A					J					I					H					G					F					E					D					C					B					A					J					I					H					G					F					E					D					C					B					A					J					I					H					G					F					E					D					C					B					A					J					I					H					G					F					E					D					C					B					A					J					I					H					G					F					E					D					C					B					A					J					I					H					G					F					E					D					C					B					A					J					I					H					G					F					E					D					C					B					A					J					I					H					G					F					E					D					C					B					A					J					I					H					G					F					E					D					C					B					A					J					I					H					G					F					E					D					C					B					A					J					I					H					G					F					E					D					C					B					A					J					I					H					G					F					E					D					C					B					A					J					I					H					G					F					E					D					C					B					A					J					I					H					G					F					E					D					C					B					A					J					I					H					G					F					E					D					C					B					A					J					I					H					G					F					E					D					C					B					A					J					I					H					G					F					E					D					C					B					A					J					I					H					G					F					E					D					C					B					A					J					I					H					G					F					E					D					C					B					A					J					I					H					G					F					E					D					C					B					A					J					I					H					G					F					E					D					C					B					A					J					I					H					G					F					E					D					C					B					A					J					I					H					G					F					E					D					C					B					A					J					I					H					G					F					E					D					C					B					A					J					I					H					G					F					E					D					C					B					A					J					I					H					G					F					E					D					C					B					A					J					I					H					G					F					E					D					C		